

# 40571 Christmas Polar Bears

- Installation requires a lot of patience and great observation that your LEGO bricks will come alive when you get this finished. The bricks with lighting as below, so make sure you're ready and let's get started.



# Strategies for the Installation

This instruction divides three sections to complete the installation of the lighting set.

## **Section A:** Check the type and quantity of components.

The quantity and type of components of each products are different and it needs to be carefully checked to make sure there do have enough material. The type of components is indicated by the label on the bag.

## **Section B:** Test that each components is working properly.

Each components is made individually so it is necessary to test that each components is working properly to avoid the situation that the lighting does not work .

## **Section C:** laying out components following the instruction.

Our material is very small but not fragile, just be reminded that don't to pull the wires too hard. For different people, there may be some installation steps that you can't understand. Please look at the previous and later installation step.

## **Section A: Check the type and quantity of components.**

**There are 3 bags in this set. The name and quantities of specific components are as shown , please check carefully.**

Label	Content	Quantity
A012 Expansion Board	2 Socket Expansion Board	1
A01408 USB Power Cable	USB Power Cable	1
A02604 Colorful-Colour String	Colorful-Colour String	1

**Please contact us immediately if there have any missing components.**

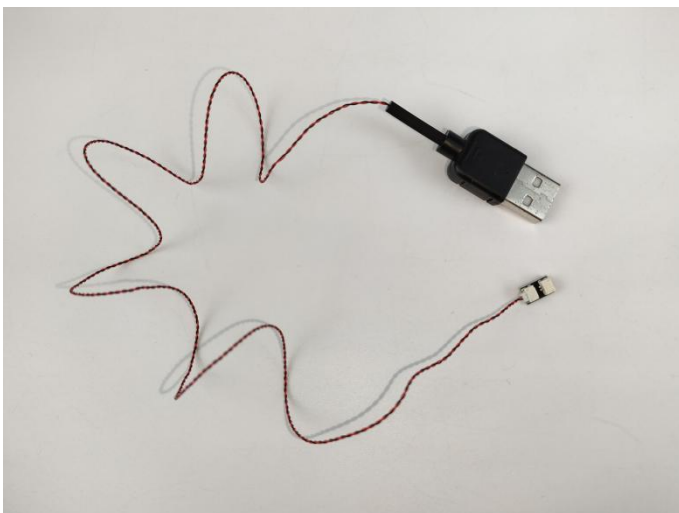
## **Section B: Test that each components is working properly.**

We need a structure to test all lights, so take out the bag with label “USB Power Cord” and “Expansion Boards” as follows.



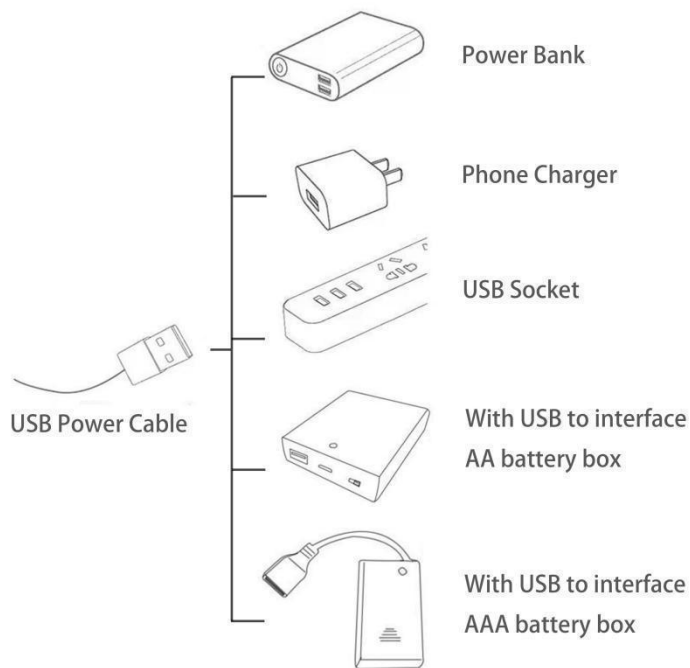
All our connections between plug and socket are all the same as shown above. So for any such structure with plug and socket, please pay attention to the golden wire of the plug and the golden needle of the socket, they must be touched together.

The connection method between the USB Power Cord and Expansion Boards is as follows:



The USB Power Cord can be powered by phone chargers, power banks, etc.

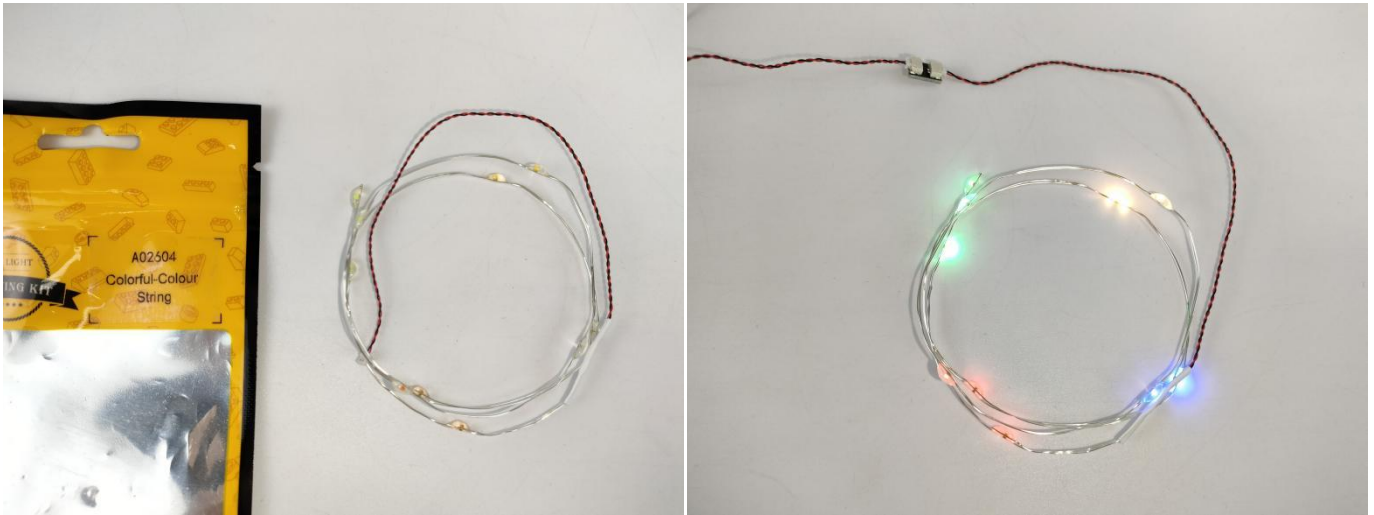
USB connectors to connect devices



This instruction will use the power bank as power supply . The test structure is shown as follow. All lamp in this set will be tested by this structure.



When we test " A02604 Colorful-Colour String" particles,Take out the bag labelled "A02604 Colorful-Colour String".Take out one of the light and connect it to the socket. Turn on the power bank, the light will turn on normally as shown below.



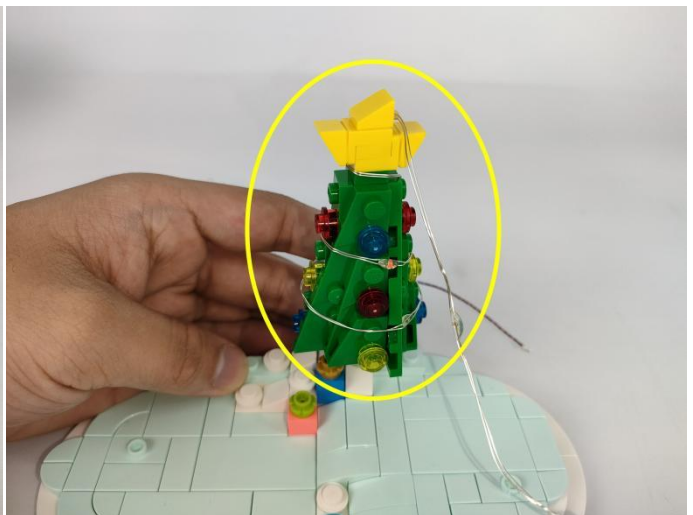


**Section C:** laying out components following the instruction.

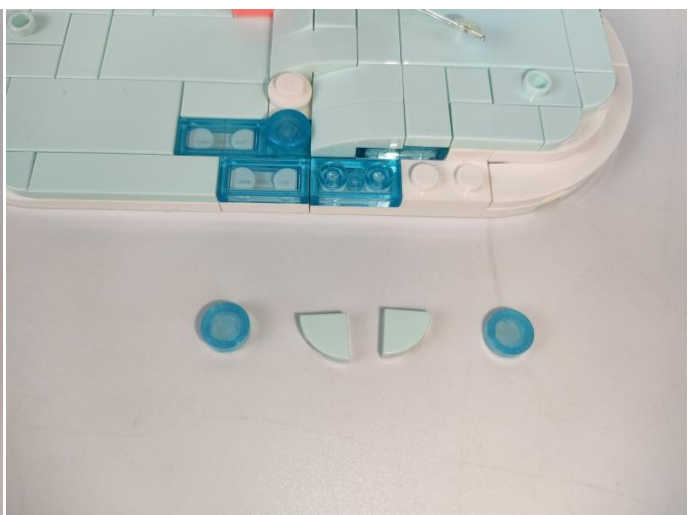
**1**



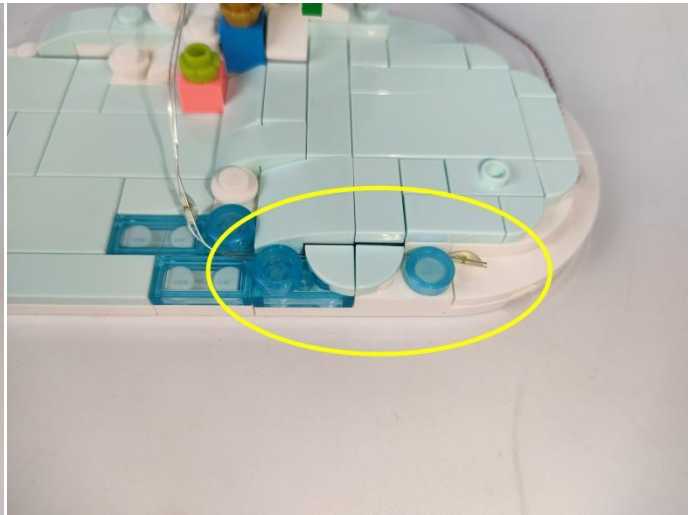
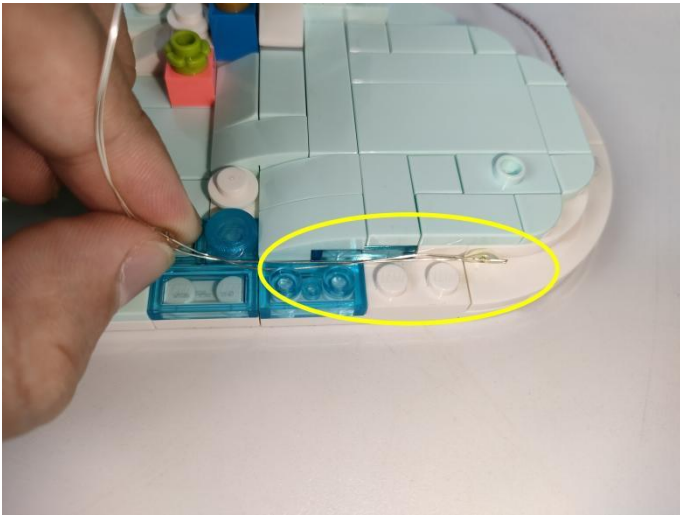
**2**



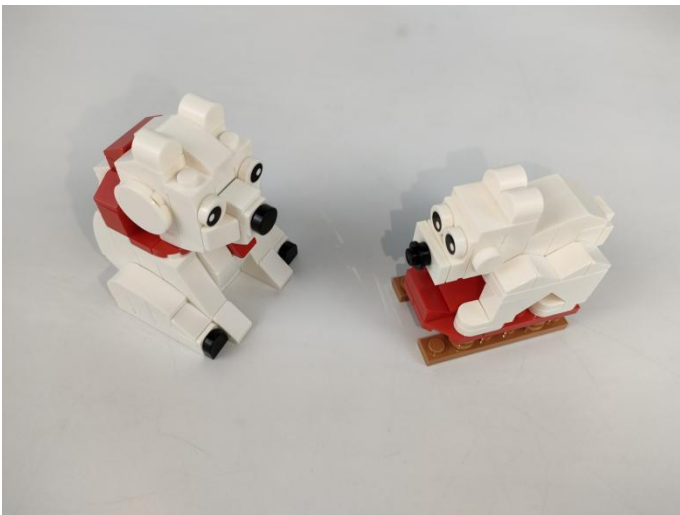
**3**



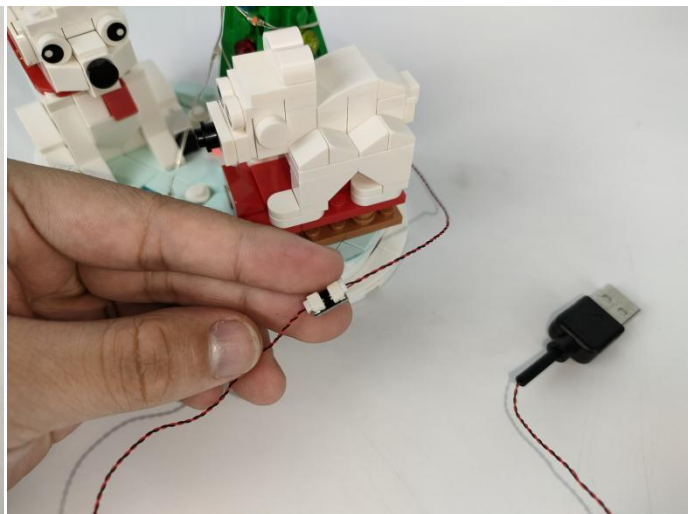
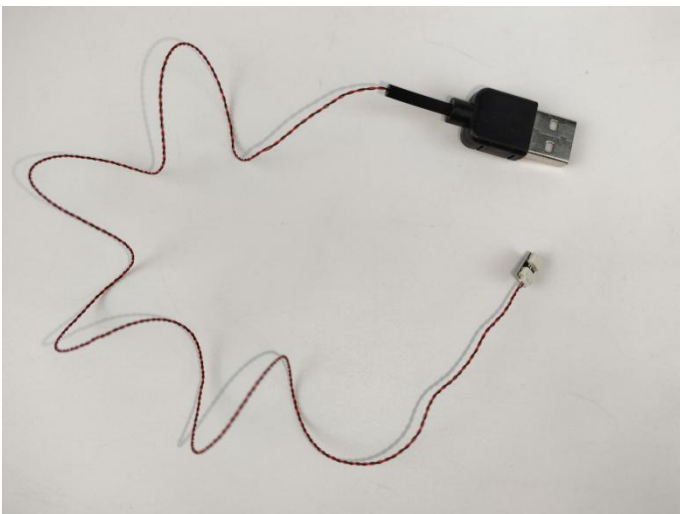
4



5



6





7



Good job, you've done all the installation steps, power it up and enjoy your work.

