

# 75355 X-wing Starfighter P47802

- P47802 is the unique code of lighting set, we use this to accurately identify the product you purchased and the corresponding manuals and services you need to obtain. Please make sure your product code is the same as the label on the back of the box shown “75355 P47802”.
- Installation requires a lot of patience and great observation that your LEGO bricks will come alive when you get this finished. The bricks with lighting as below, so make sure you're ready and let's get started.



# Strategies for the Installation

This instruction divides three sections to complete the installation of the lighting set.

## **Section A:** Check the type and quantity of components.

The quantity and type of components of each products are different and it needs to be carefully checked to make sure there do have enough material.

The type of components is indicated by the label on the bag.

## **Section B:** Test that each components is working properly.

Each components is made individually so it is necessary to test that each components is working properly to avoid the situation that the lighting does not work .

## **Section C:** laying out components following the instruction.

Our material is very small but not fragile, just be reminded that don't to pull the wires too hard. For different people, there may be some installation steps that you can't understand. Please look at the previous and later installation step.

## Section A: Check the type and quantity of components.

There are 13 bags in this set. The name and quantities of specific components are as shown , please check carefully.

Label	Content	Quantity
A01013 Light-30CM Pink	Light-30CM Pink	4
A01103 LED Strip Blue	LED Strip Blue	1
A012 Expansion Board	4 Socket Expansion Board	3
	6 Socket Expansion Board	2
A01305 Power Supply	Power Supply	1
A01501 Connecting Cable 5CM	Connecting Cable 5CM	1
A01502 Connecting Cable 15CM	Connecting Cable 15CM	3
A01505 Connecting Cable 10CM	Connecting Cable 10CM	2
A01803 Flash Light-30CM Red	Flash Light-30CM Red	2
A02507 Light Strip-Blue	Light Strip-Blue	1
A02513 Light Strip-Cyan-COB	Light Strip-Cyan-COB	4
A02537 Light Strip-Blue	Light Strip-Blue	2
A03801 Remote Control	Remote Control	1
Components		

Please contact us immediately if there have any missing components.

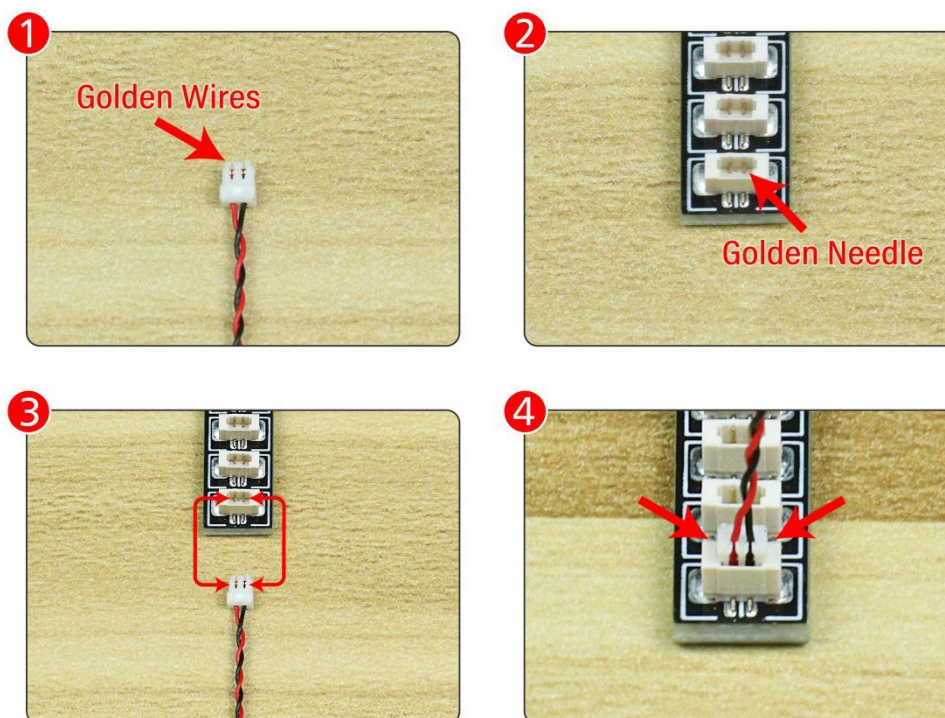
## Section B: Test that each components is working properly.

We need a structure to test all lights, so take out the bag with label “USB Power Cord” and “Expansion Boards” as follows.



It is worth reminding that our products are all customized. They have a unique way of connecting. The white plug on wire and the socket of the expansion board need to be connected together to transmit power.

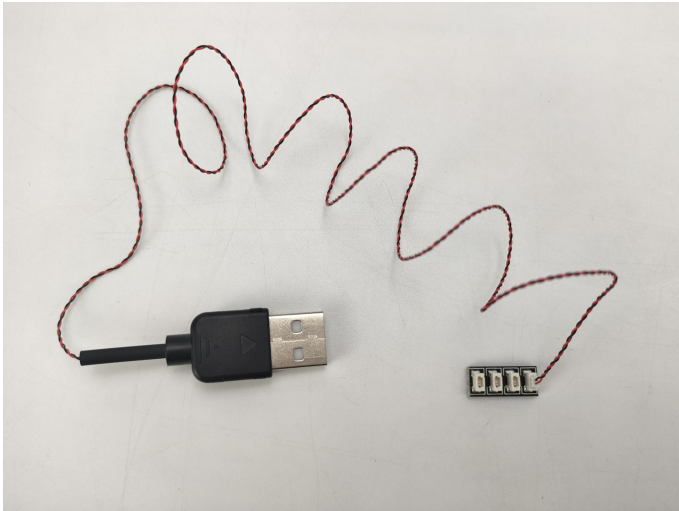
Note that on one side of the white plug you can see two very small golden wires that should be connected to the two golden needles in socket of the expansion board. shown as blow.





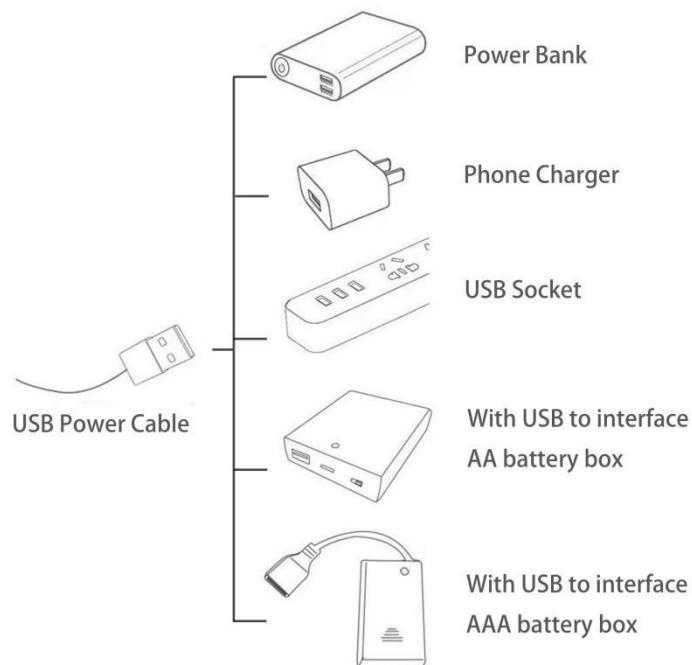
All our connections between plug and socket are all the same as shown above. So for any such structure with plug and socket, please pay attention to the golden wire of the plug and the golden needle of the socket, they must be touched together.

The connection method between the USB Power Cord and Expansion Boards is as follows:



The USB Power Cord can be powered by phone chargers, power banks, etc.

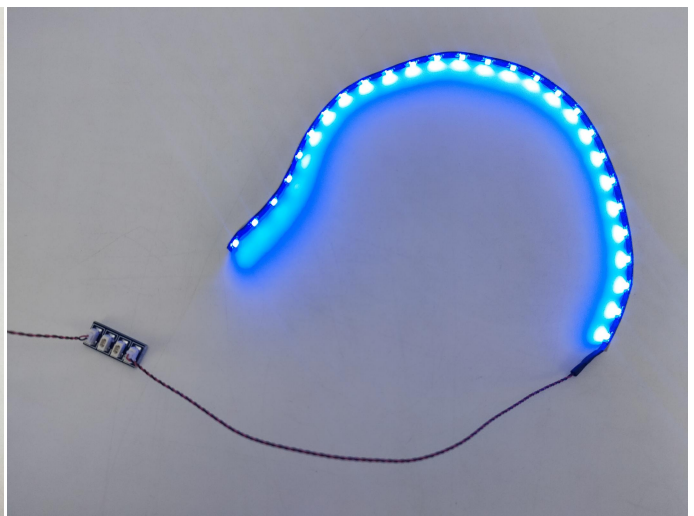
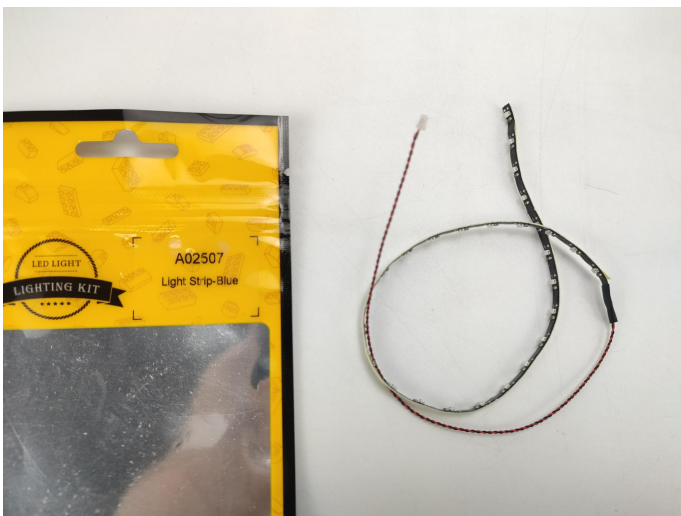
USB connectors to connect devices



**This instruction will use the power bank as power supply . The test structure is shown as follow. All lamp in this set will be tested by this structure.**



**When we test "A02507 Light Strip-Blue" particles,Take out the bag labelled "A02507 Light Strip-Blue".Take out one of the light and connect it to the socket. Turn on the power bank, the light will turn on normally as shown below.**

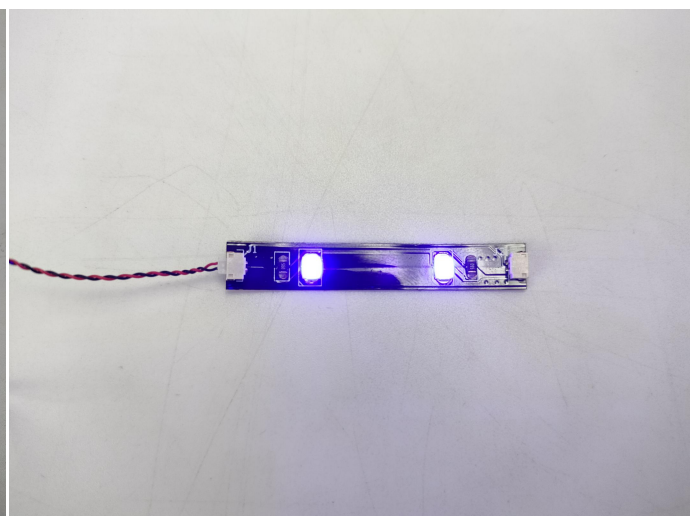


Test each lamp according to this method. It should be noted that after the test, the lamp must be returned to the corresponding bag to avoid confusion of types.



### LED strip test:

Take out the bag labeled "A01103 LED Strip Blue". Take out the LED light bar, connect the USB power cable, turn on the mobile power supply, the light will be on normally, as shown in the figure below.



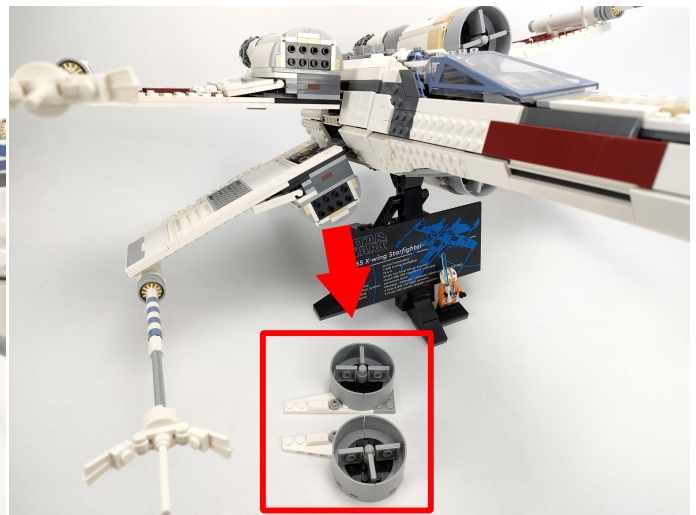
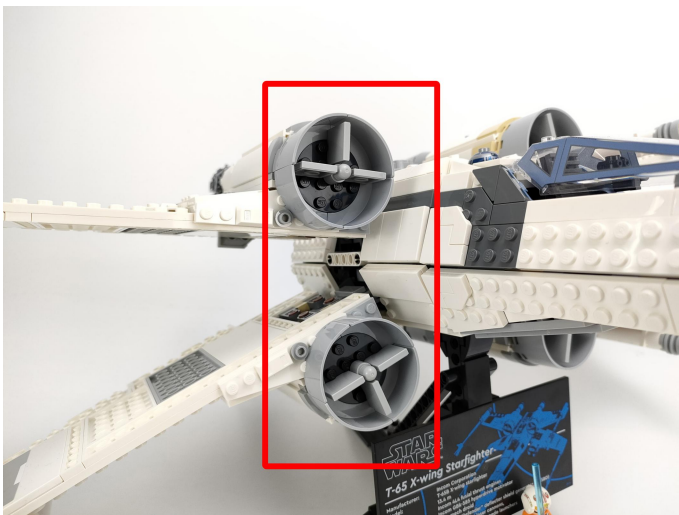
The components needs to be tested in this set is 4\*A01013 Light-30CM Pink,2\*A01803 Flash Light-30CM Red,4\*A02513 Light Strip-Cyan-COB,2\*A02537 Light Strip-Blue.  
Please contact us immediately if any components don't work.

**Section C:** laying out components following the instruction.

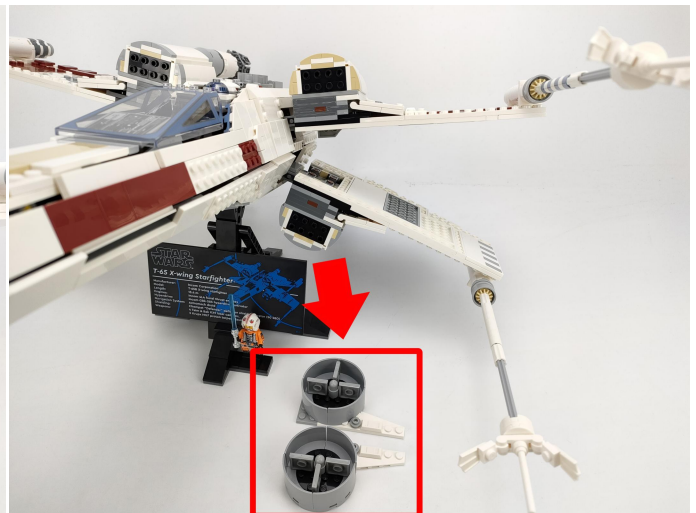
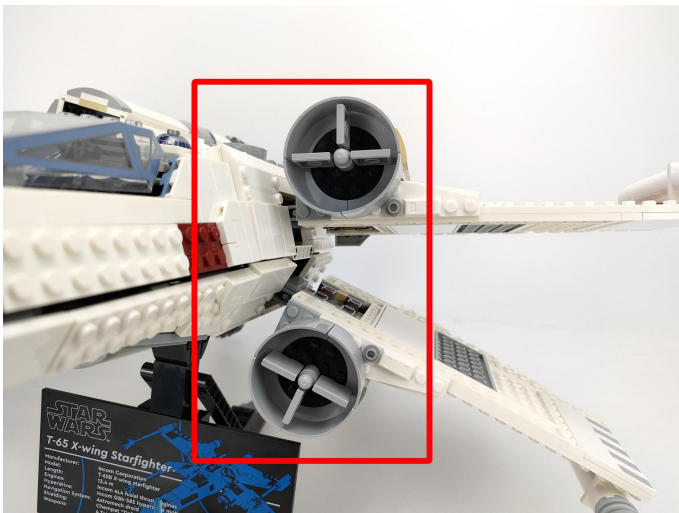
1



2

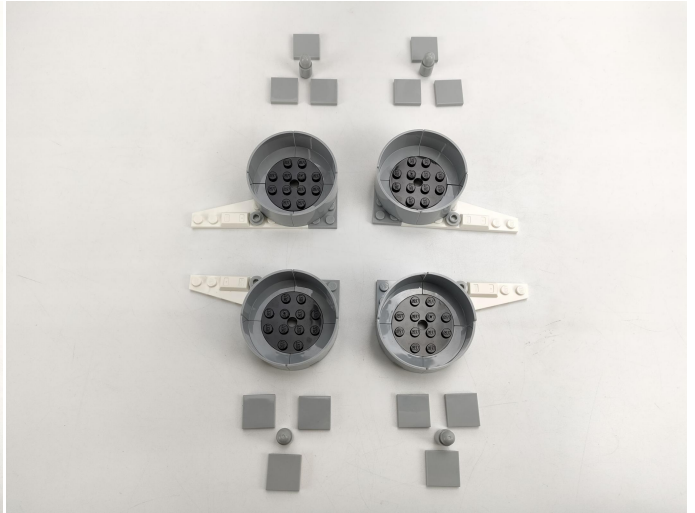
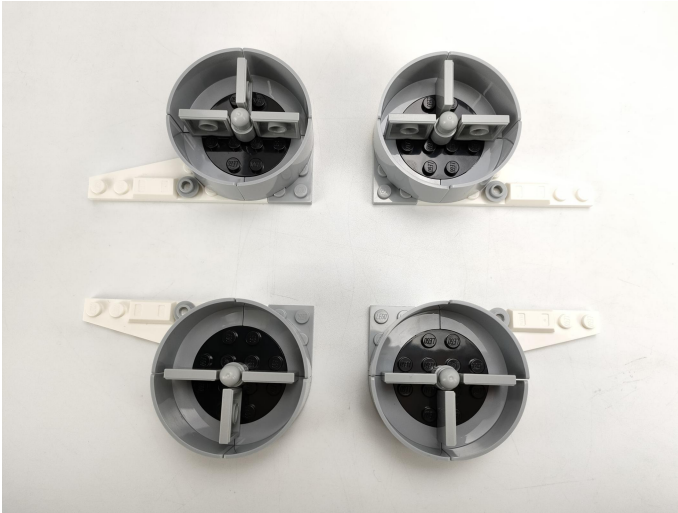


3





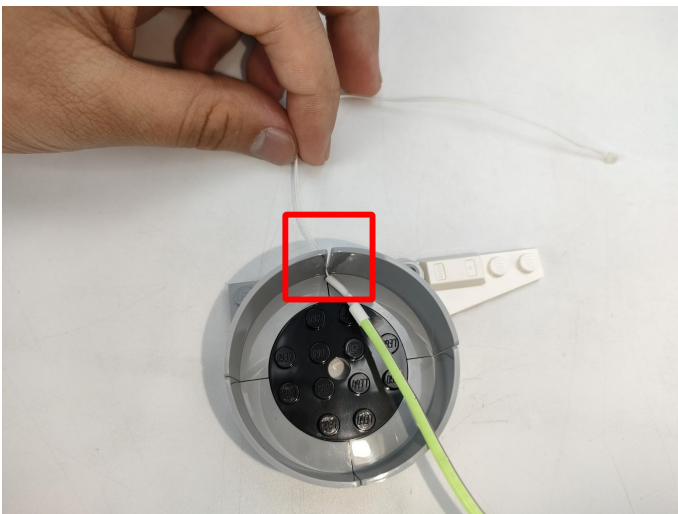
4



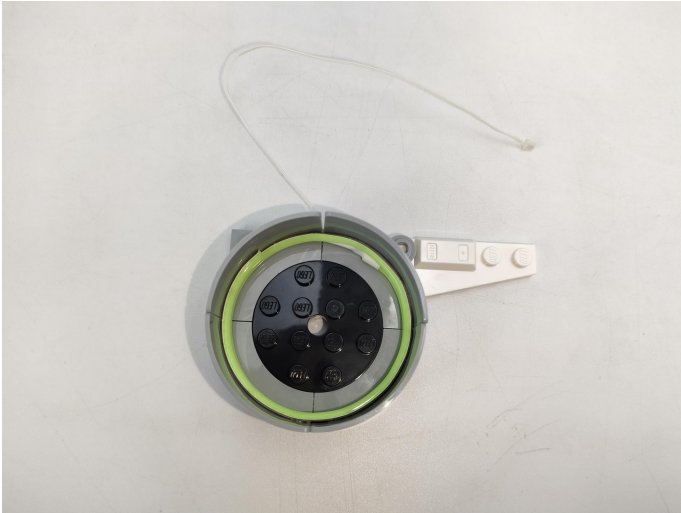
5



6



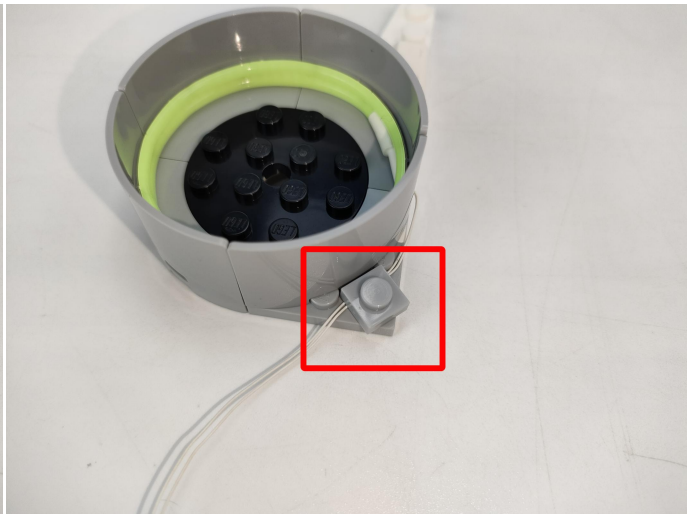
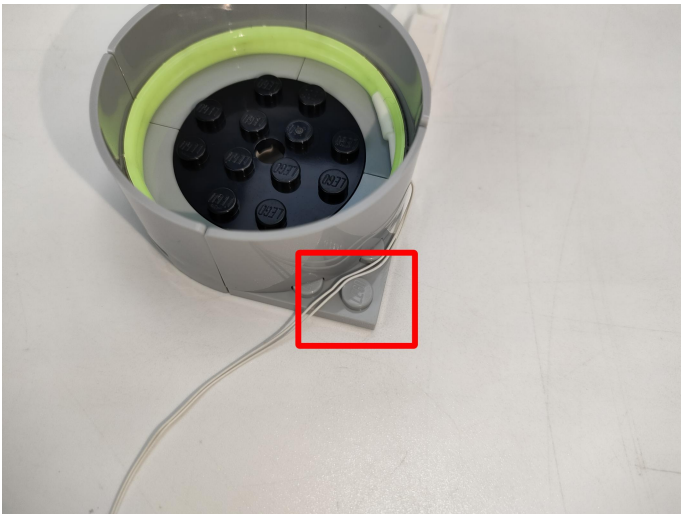
7



8



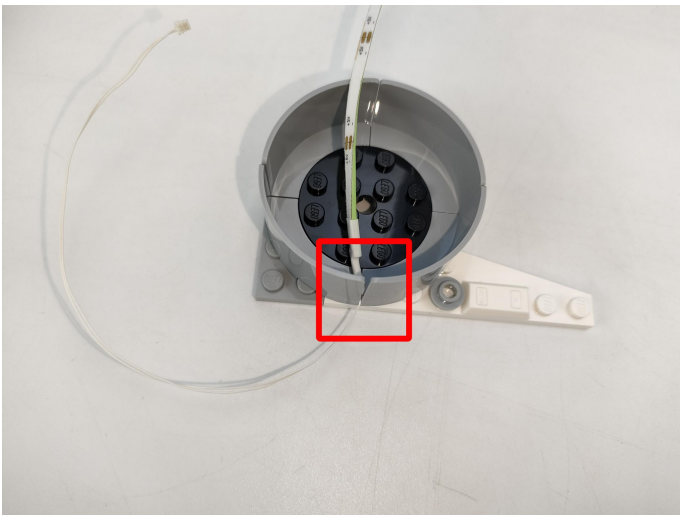
9



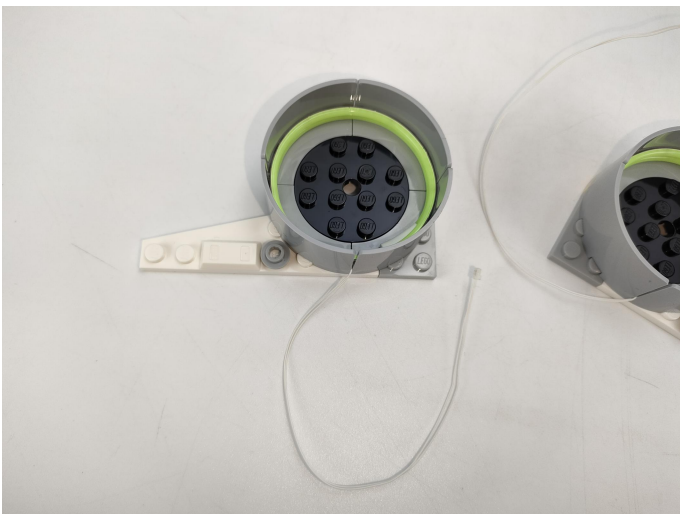
10



11

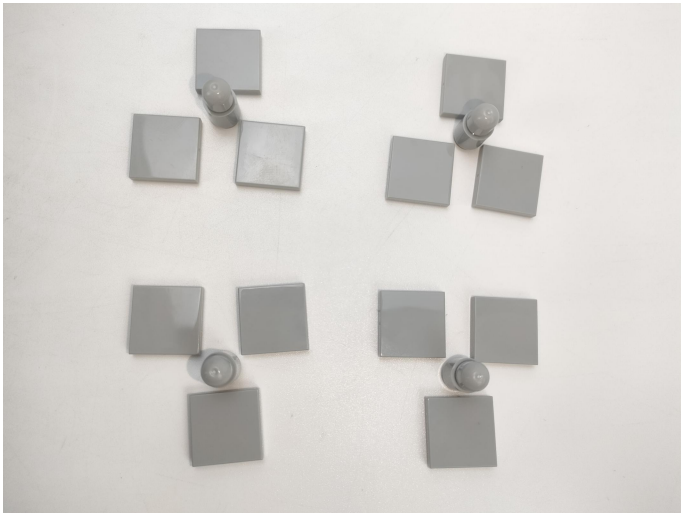


12

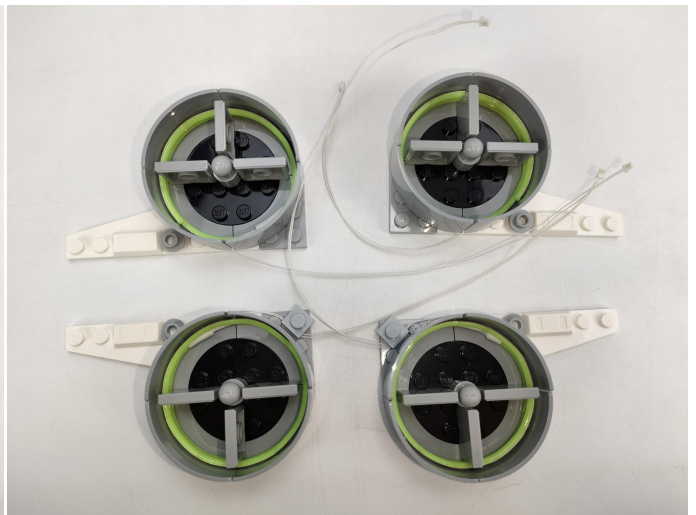
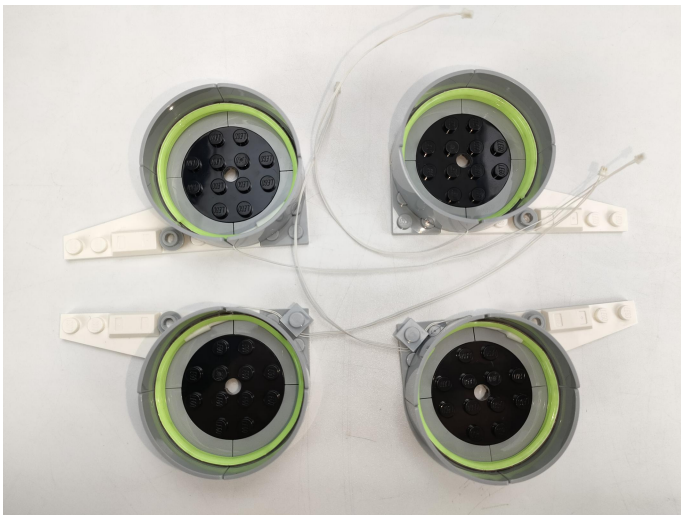




13



14



15





16



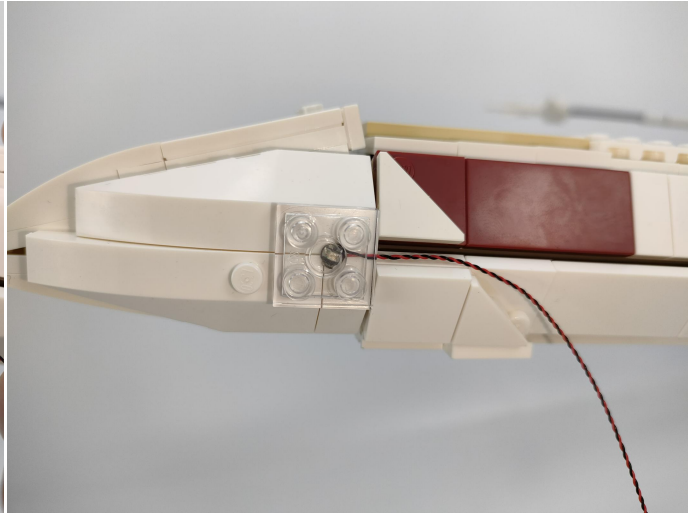
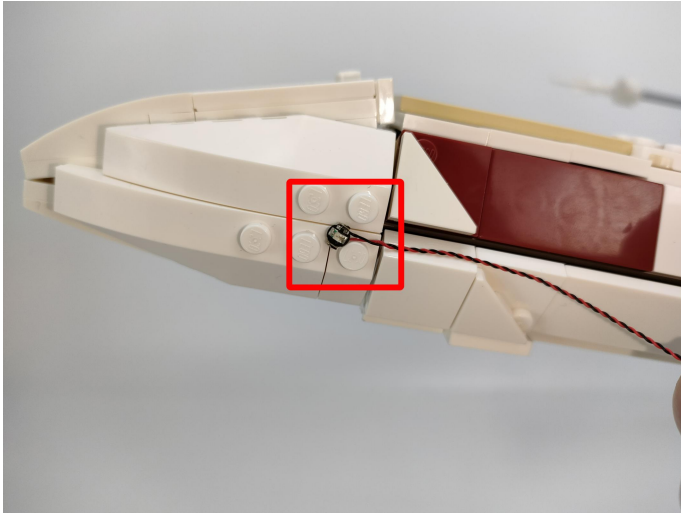
17



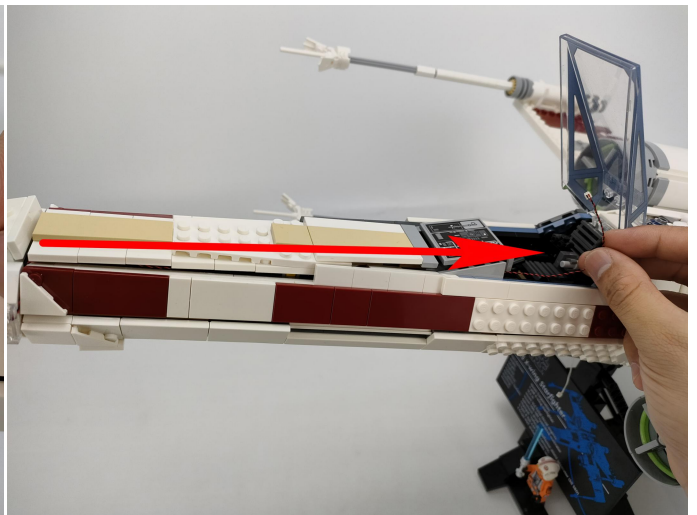
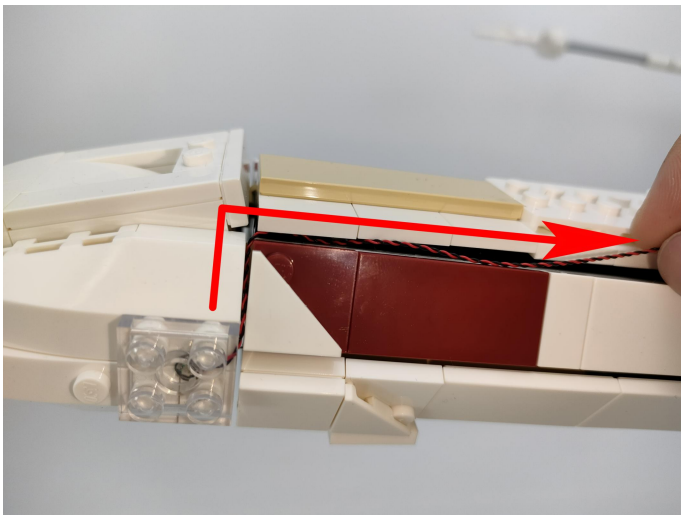
18



19



20

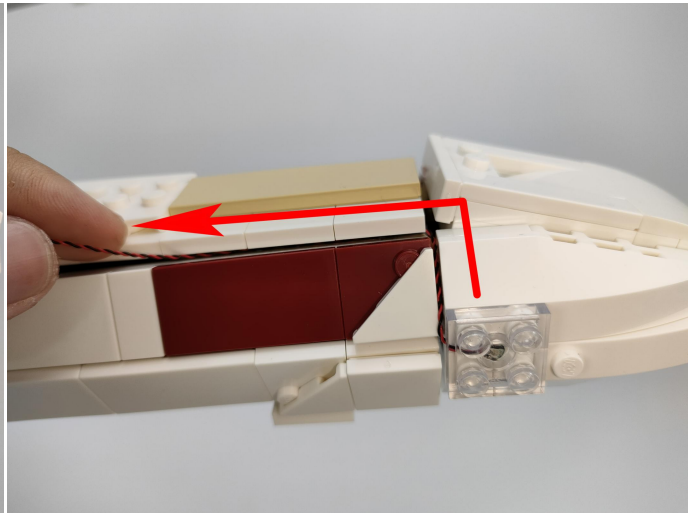
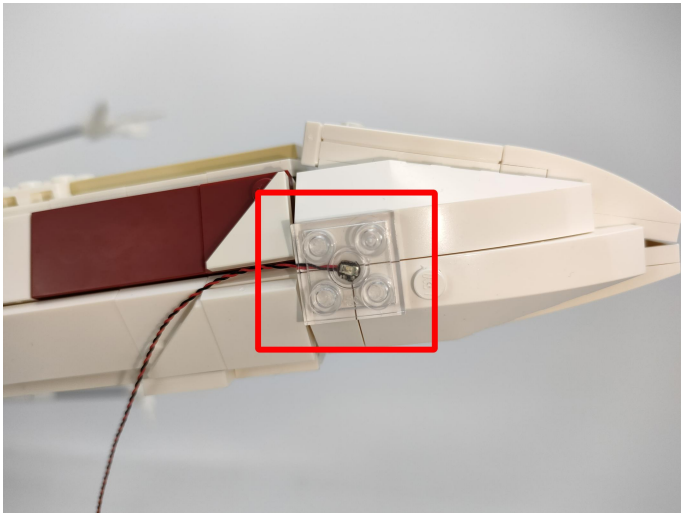


21

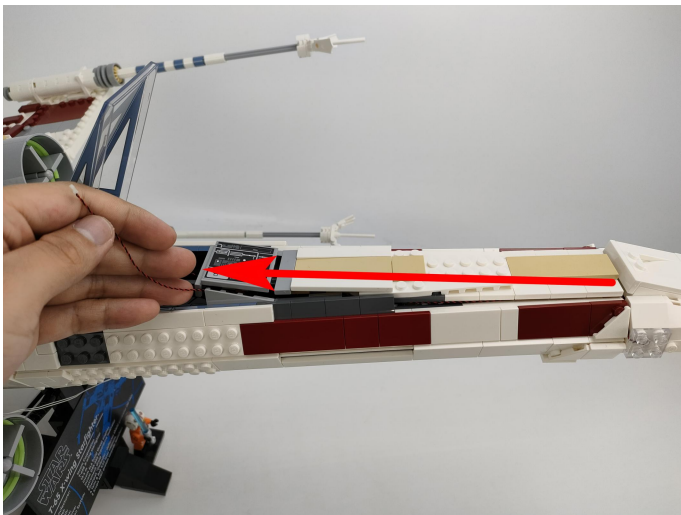




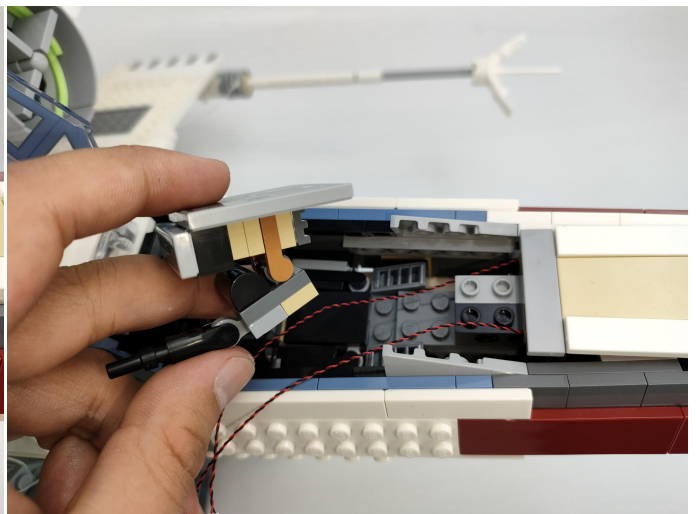
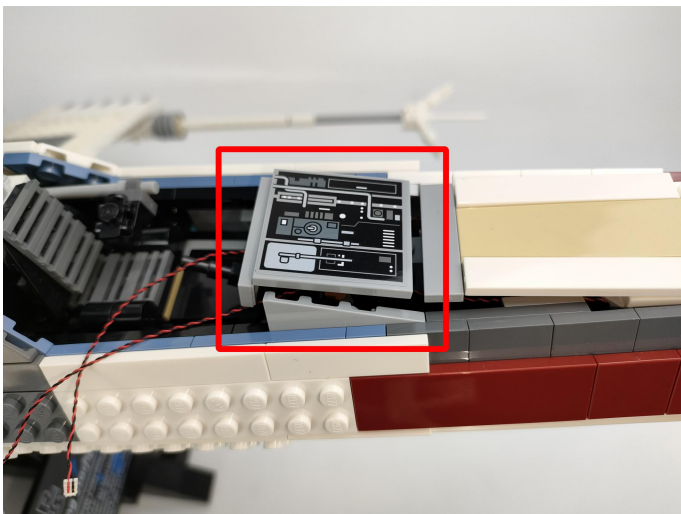
22



23



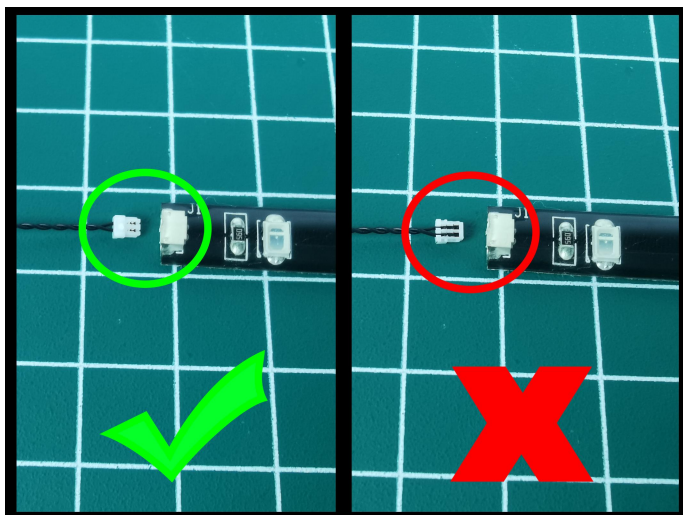
24



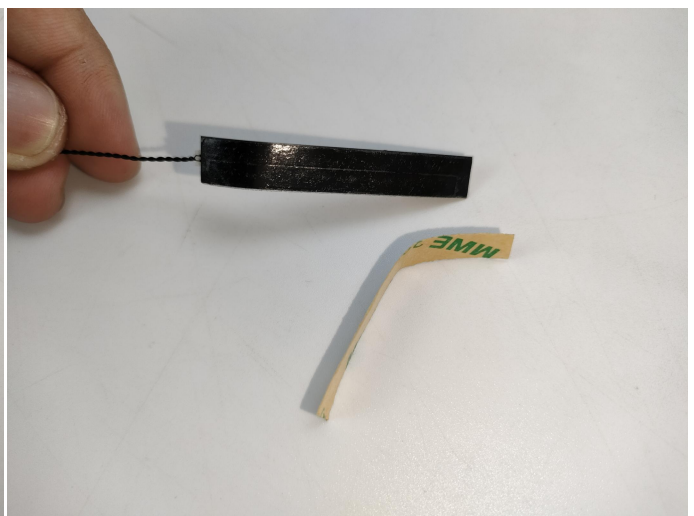
25



26

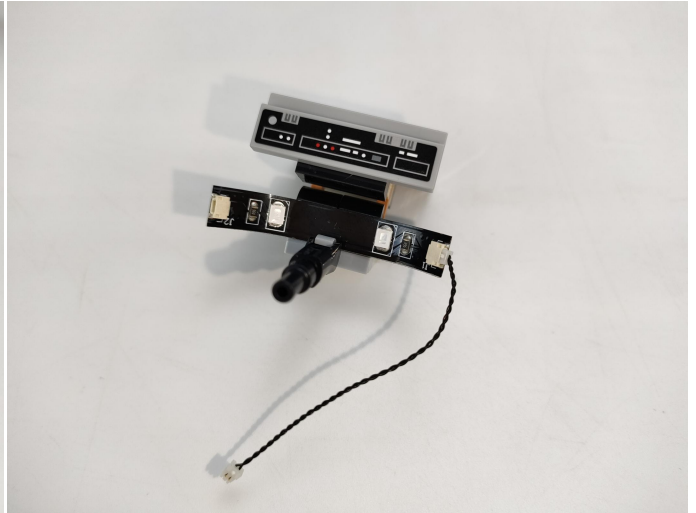


27

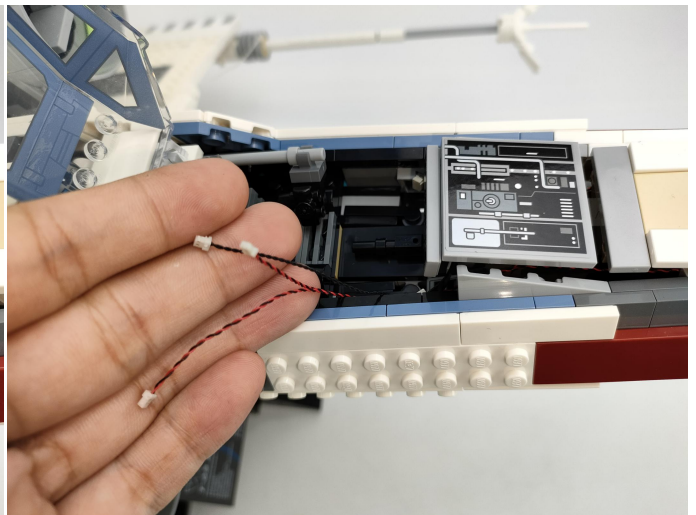
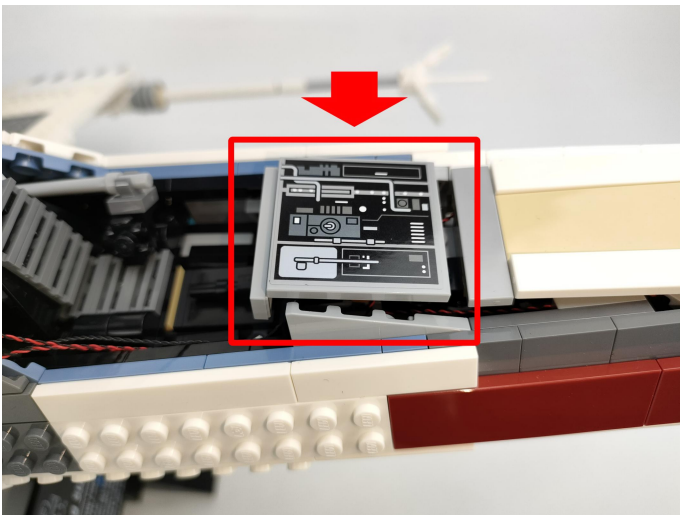




28



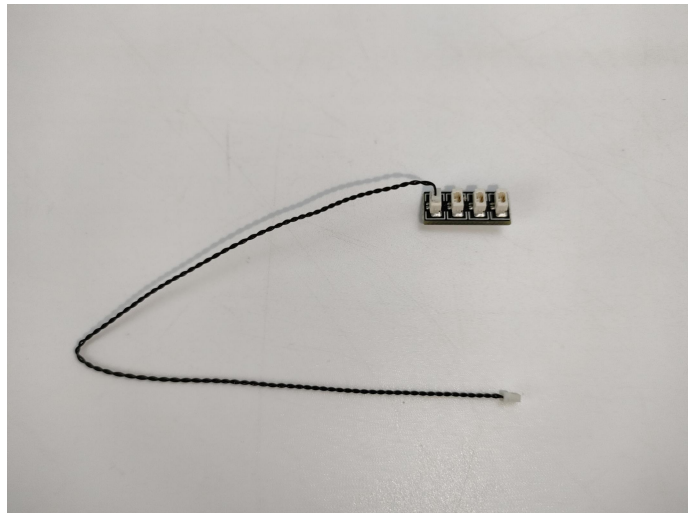
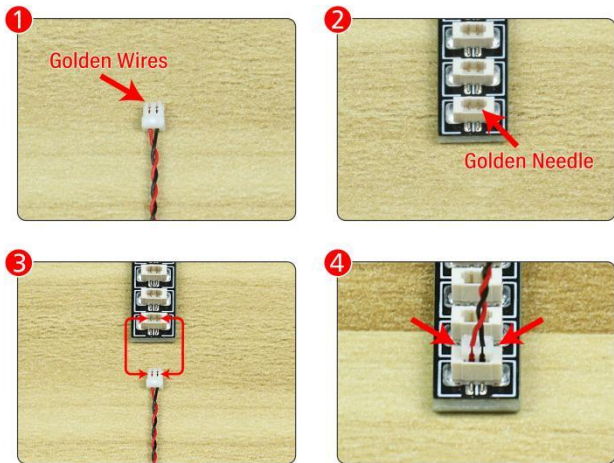
29



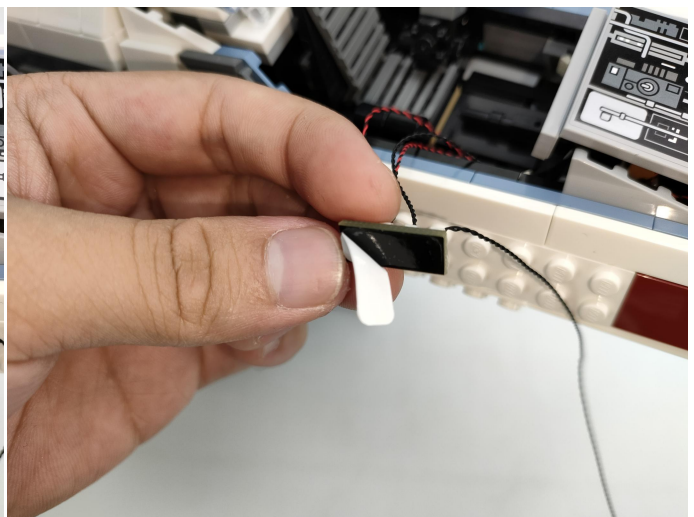
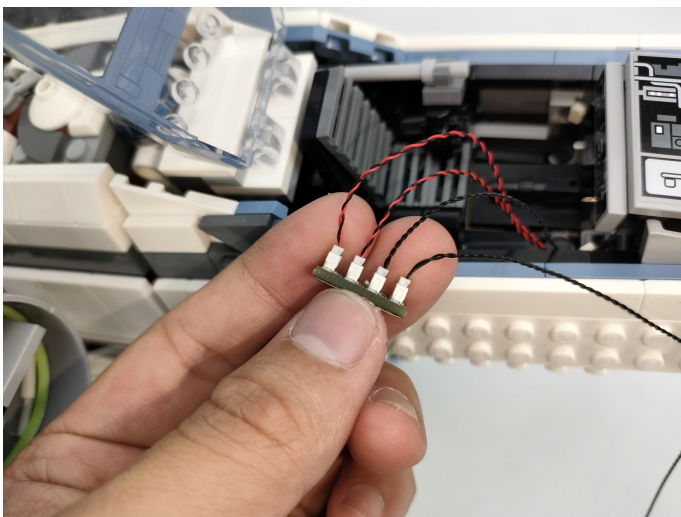
30



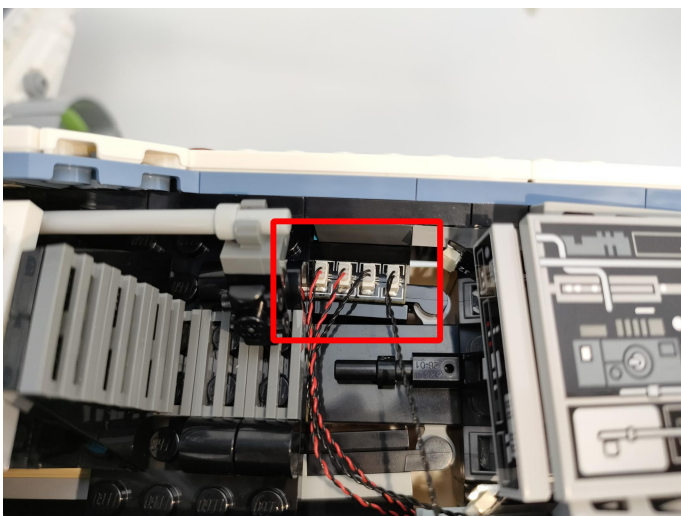
# 31



# 32

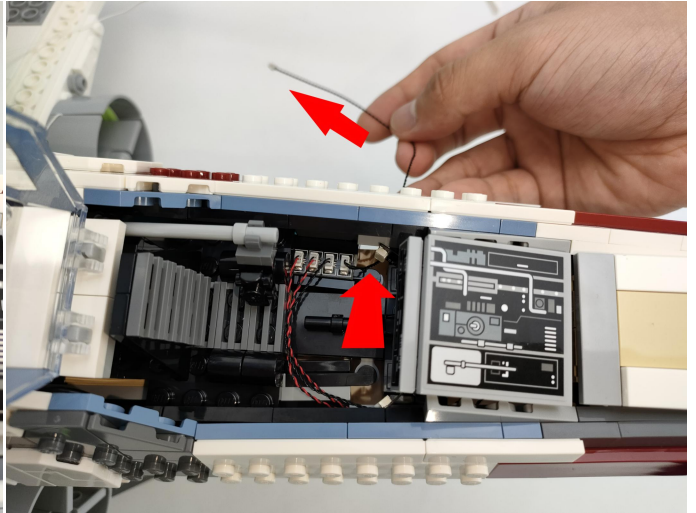
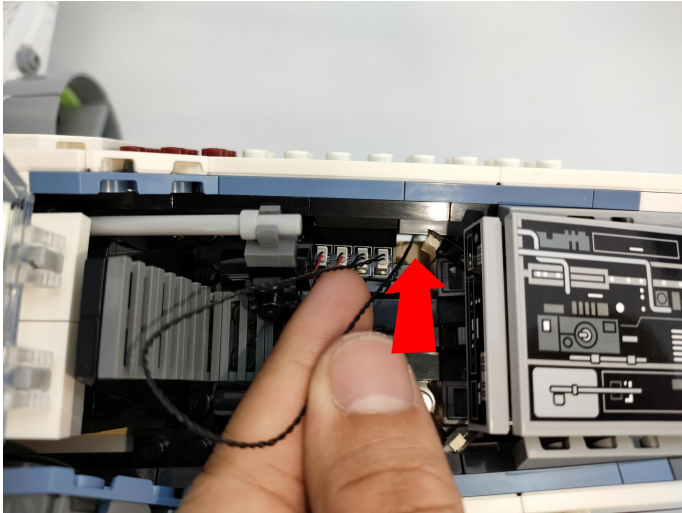


# 33





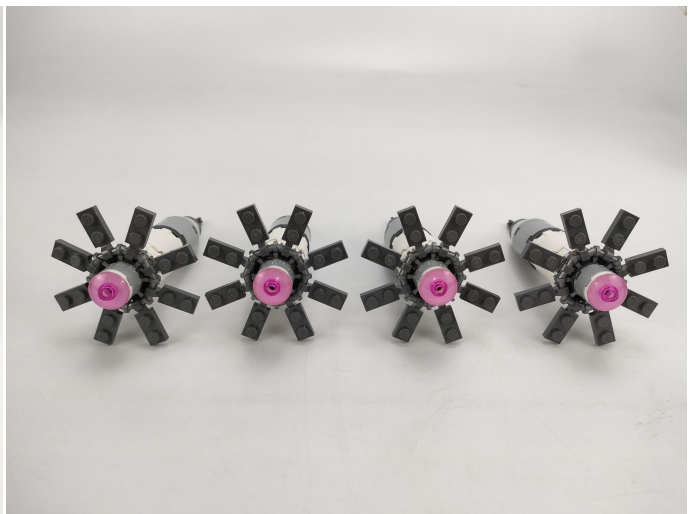
34



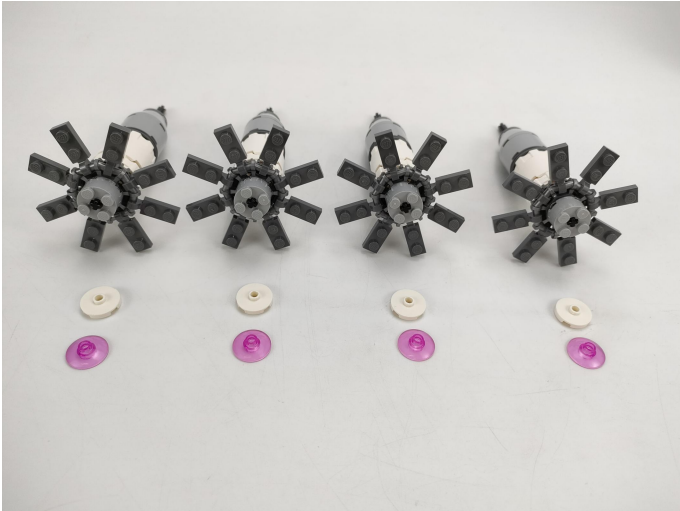
35



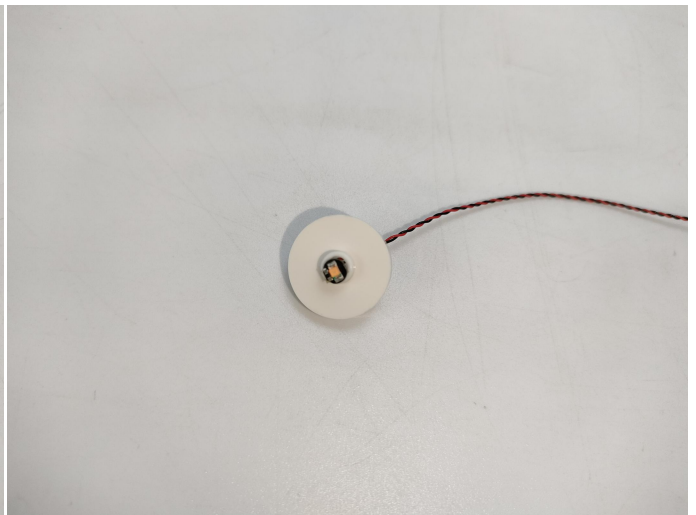
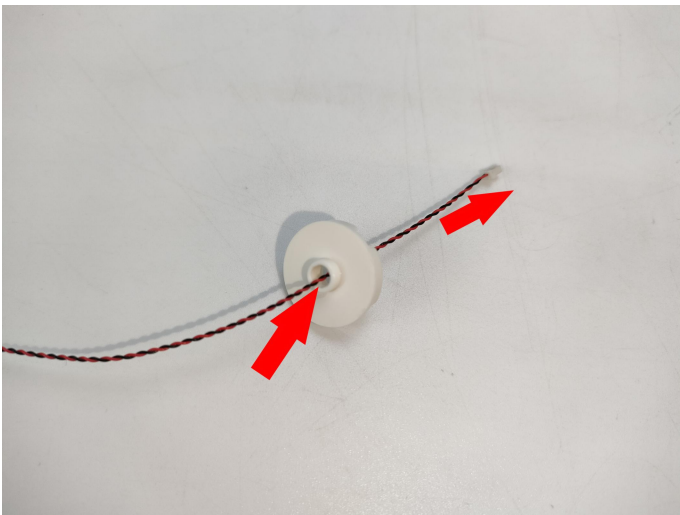
36



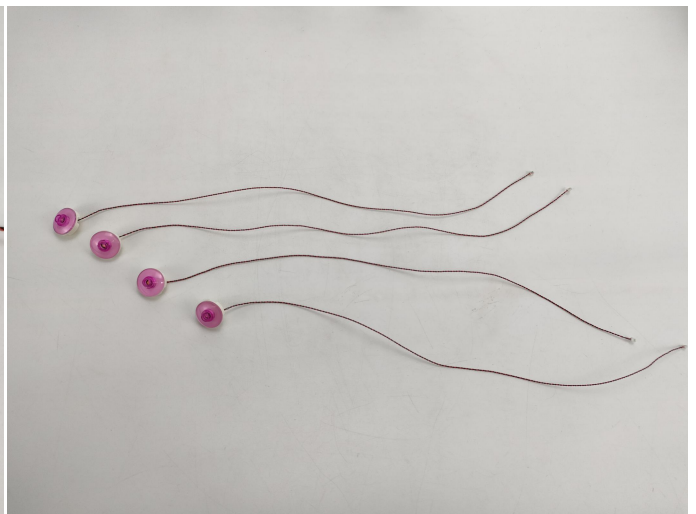
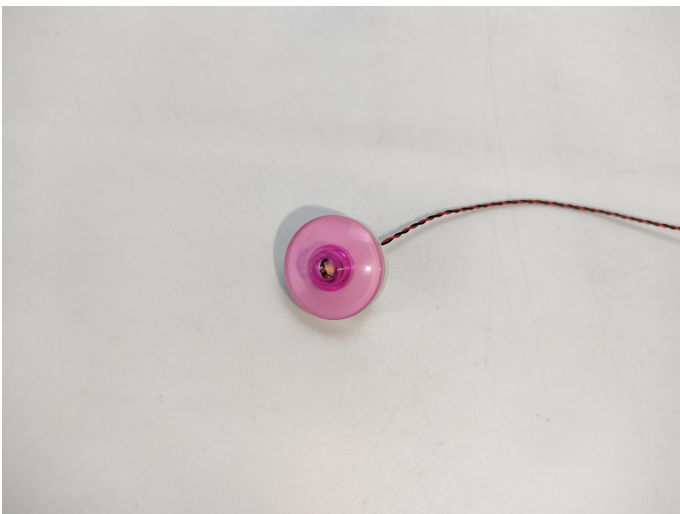
37



38

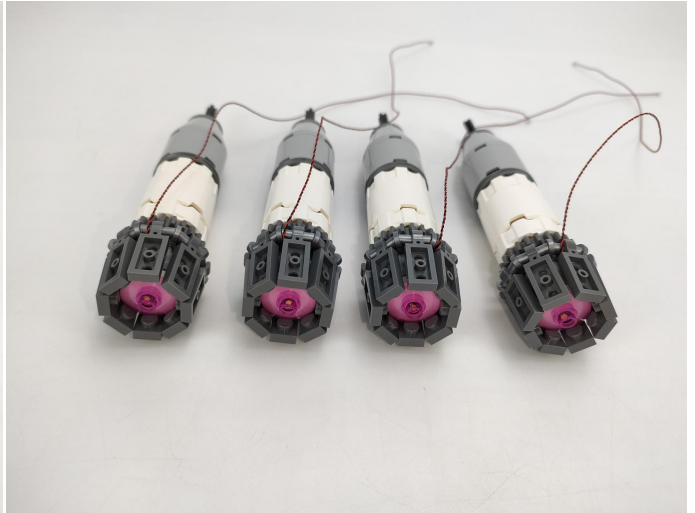
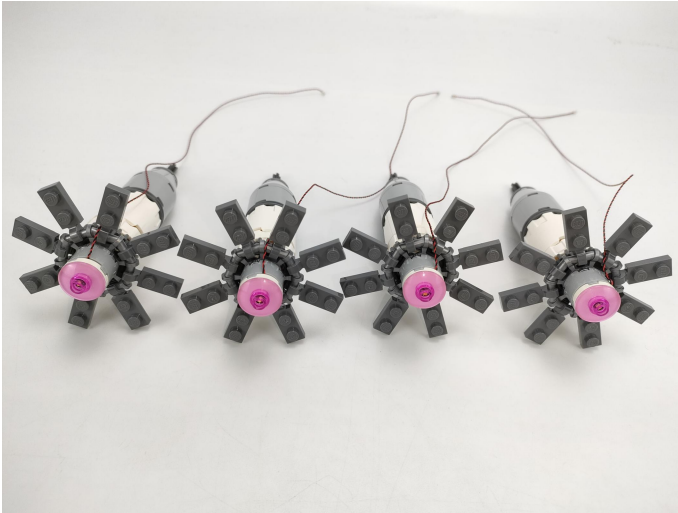


39

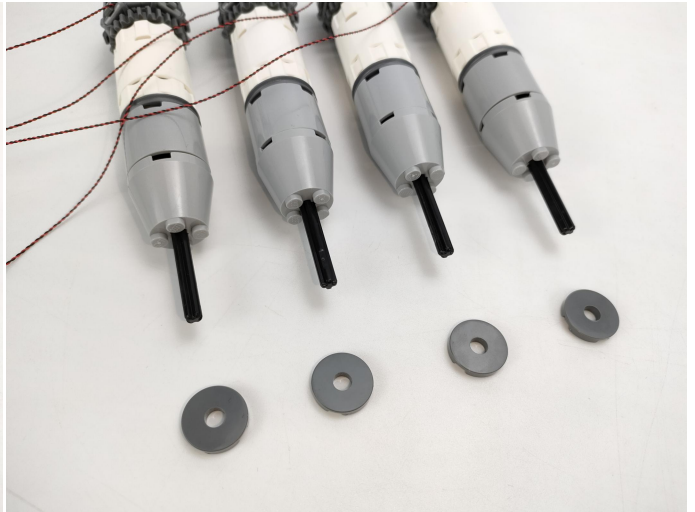
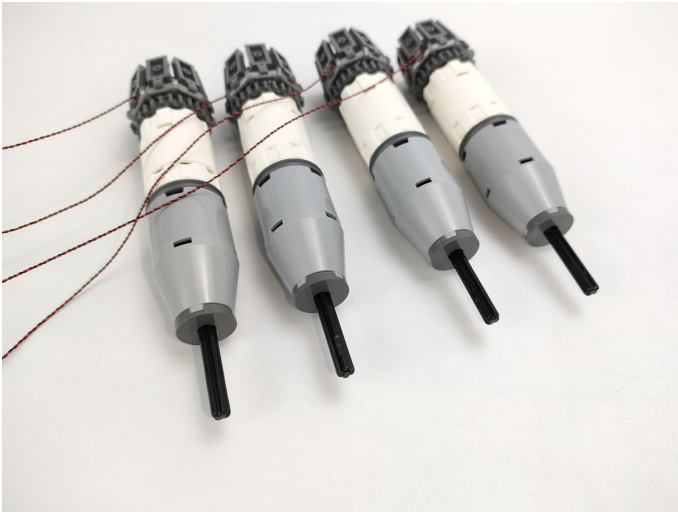




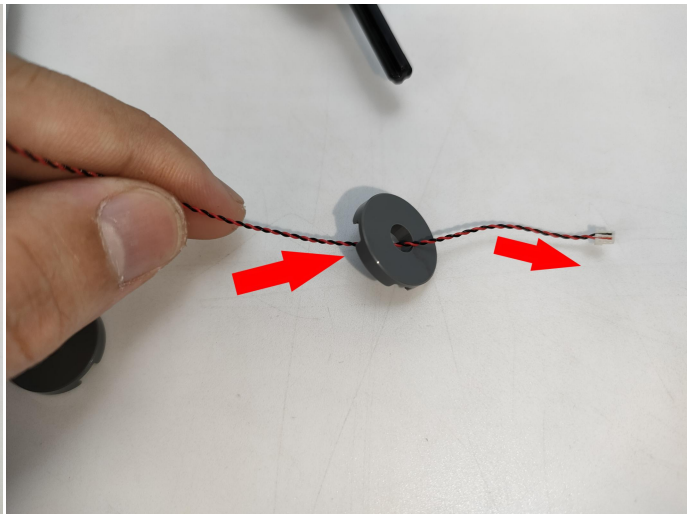
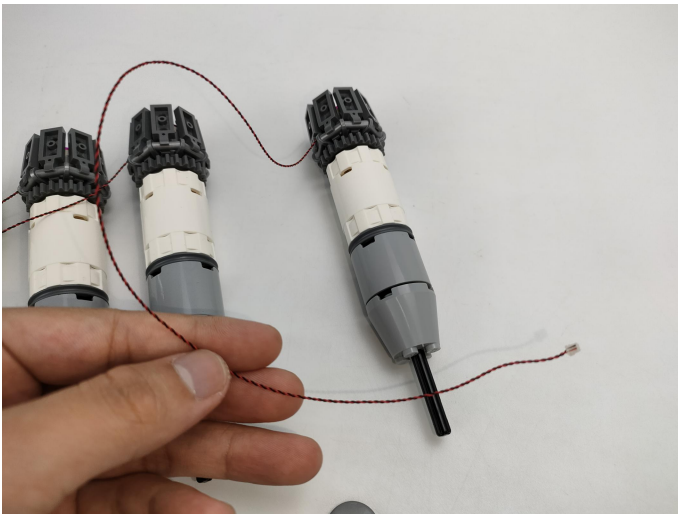
40



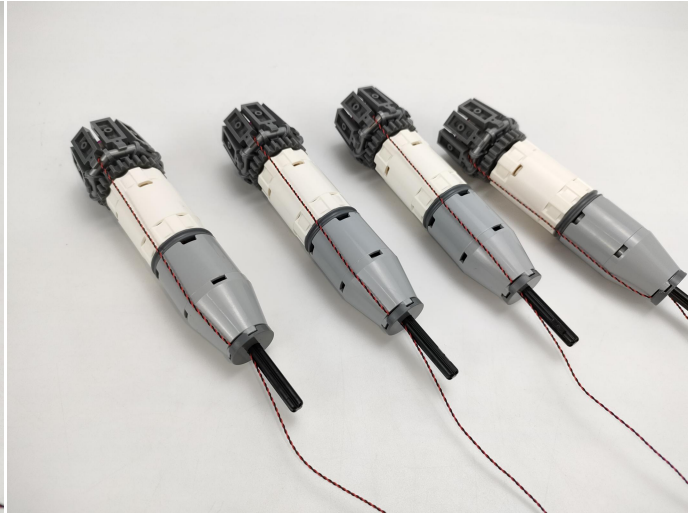
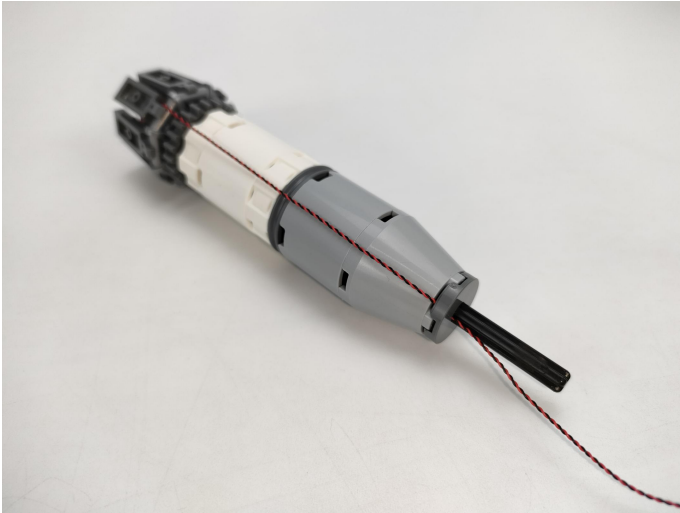
41



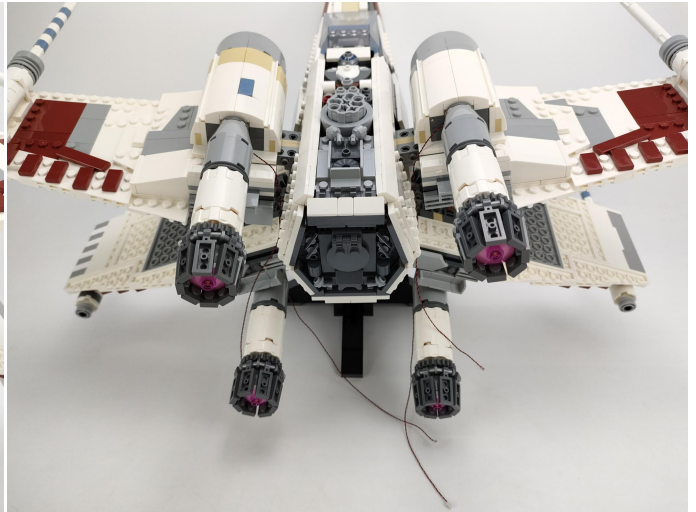
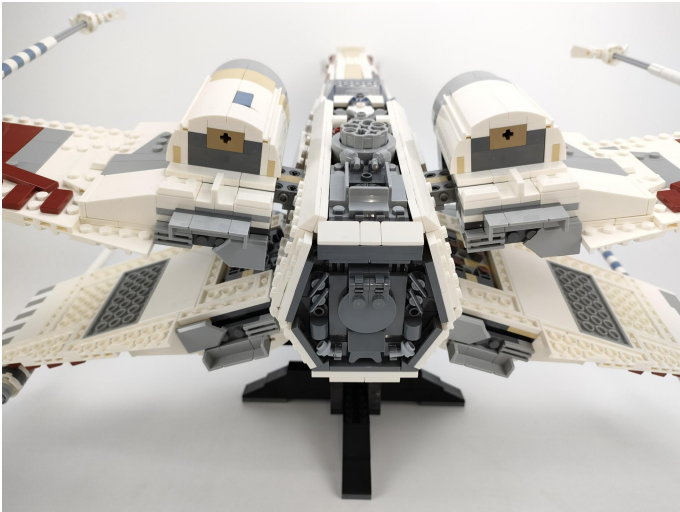
42



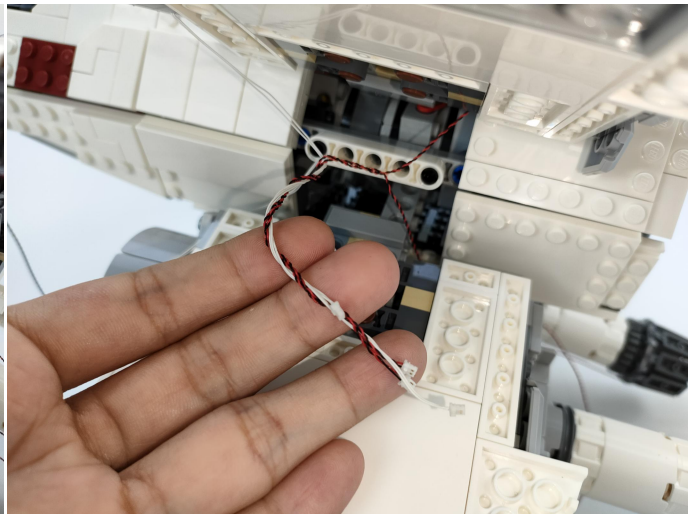
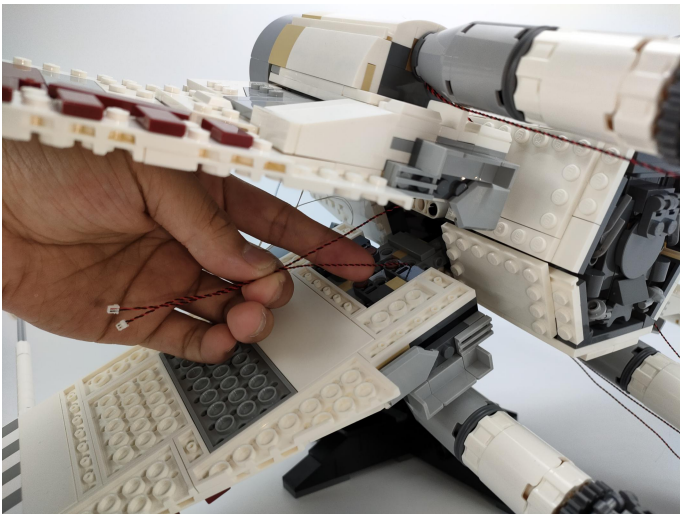
43



44

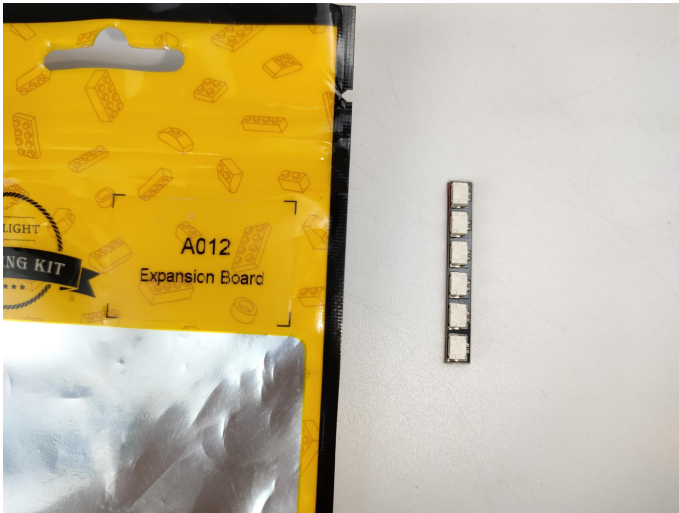


45

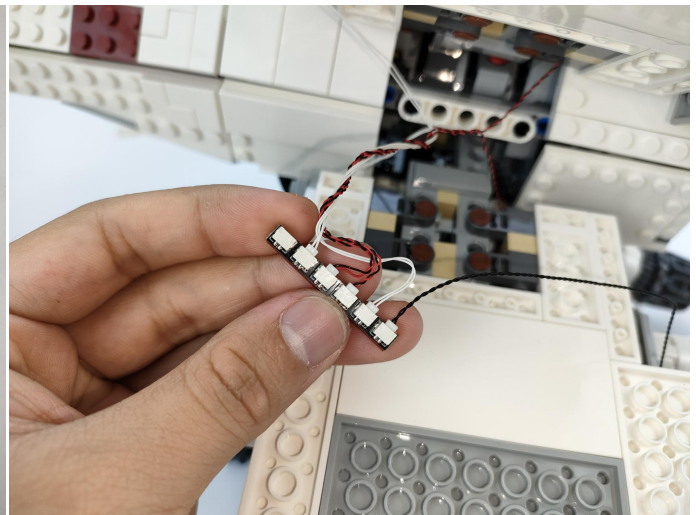




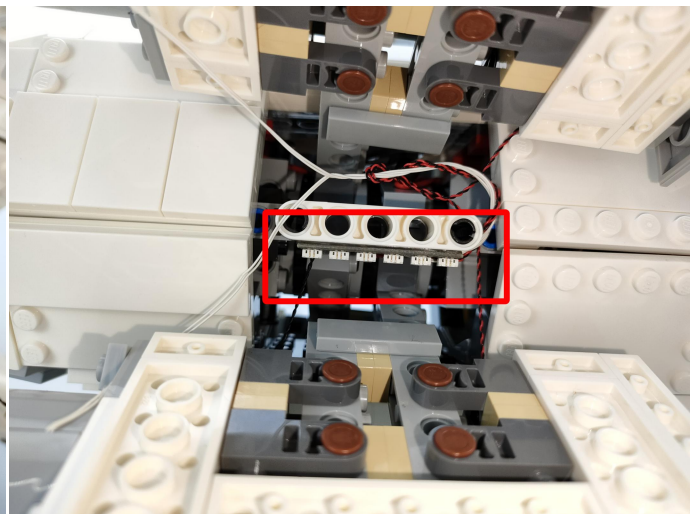
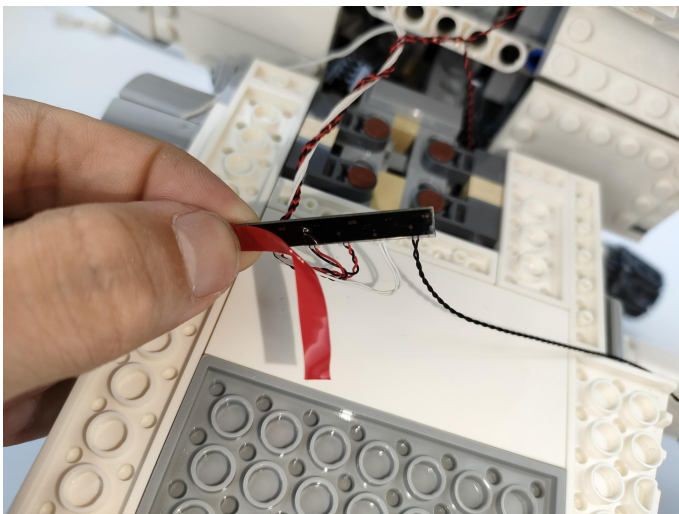
46



47

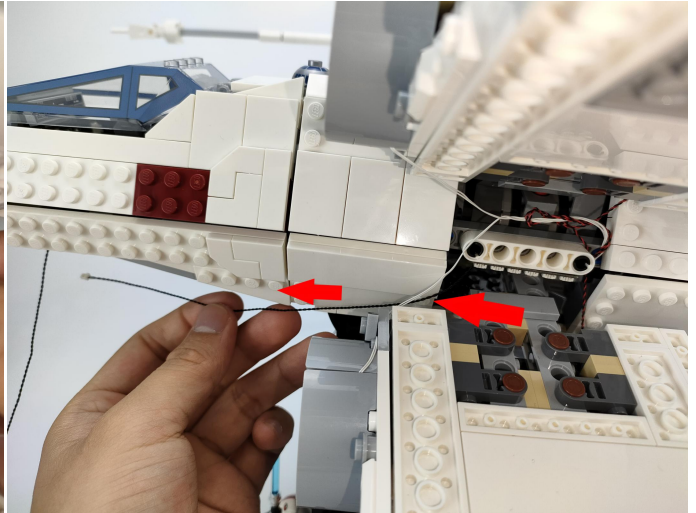
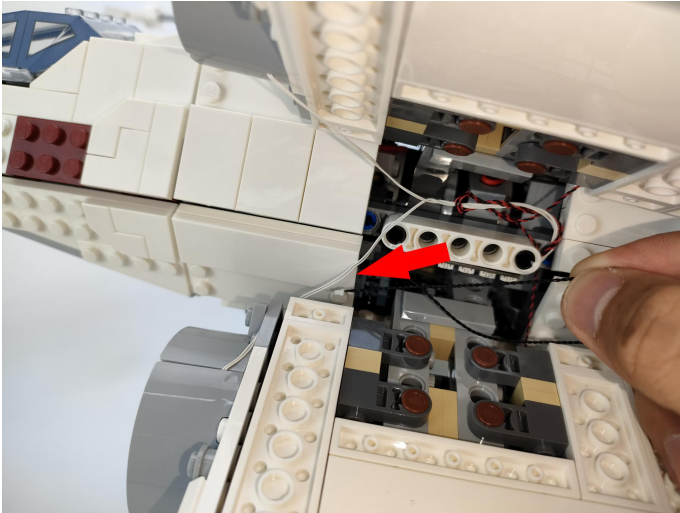


48





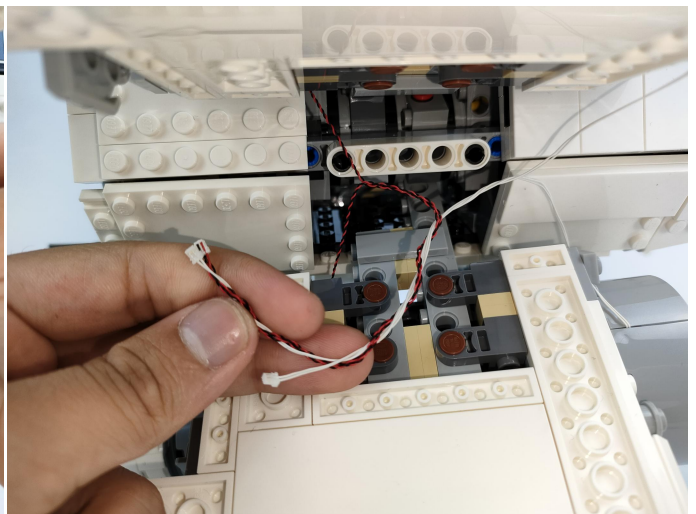
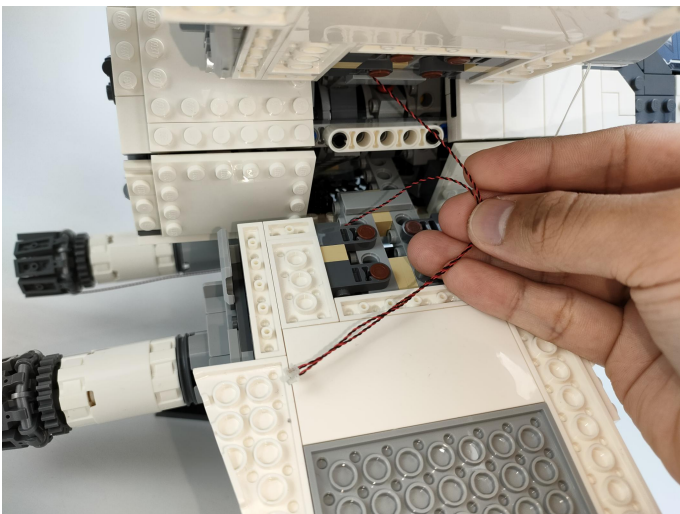
49



50



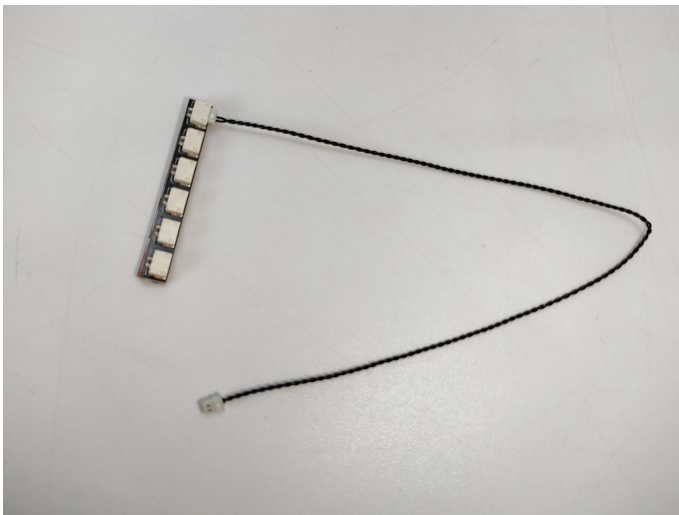
51



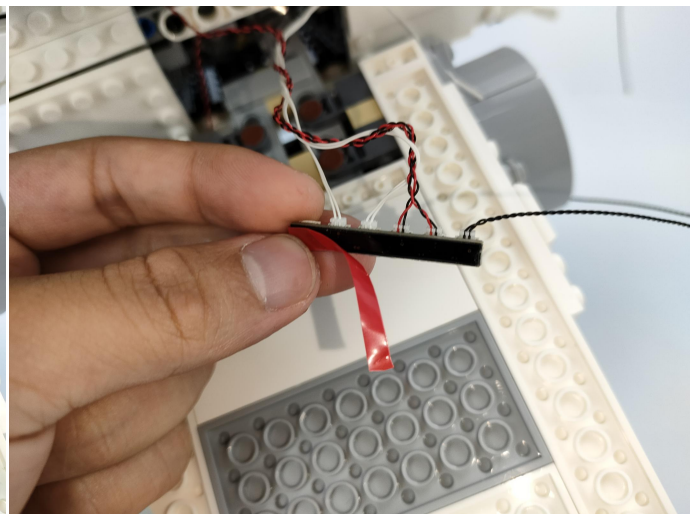
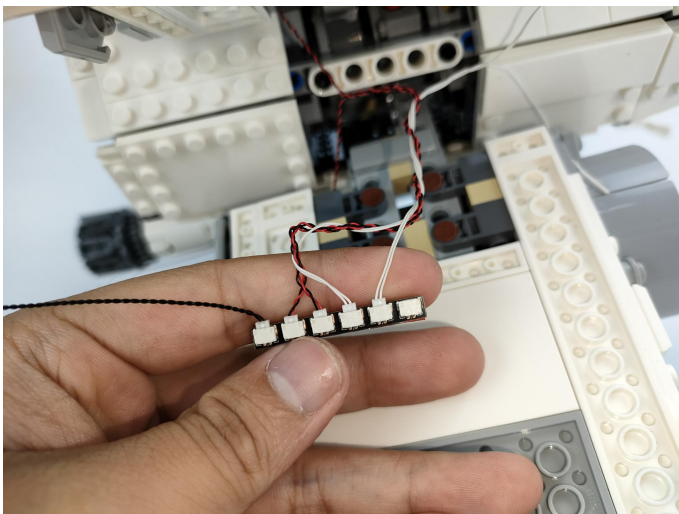
52



53

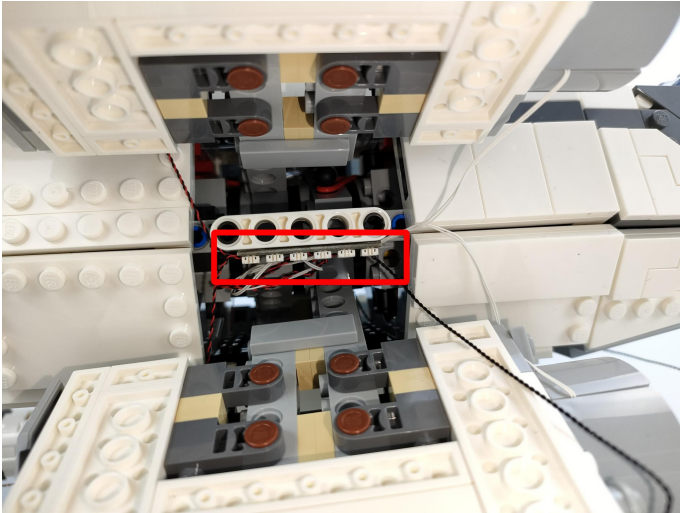


54

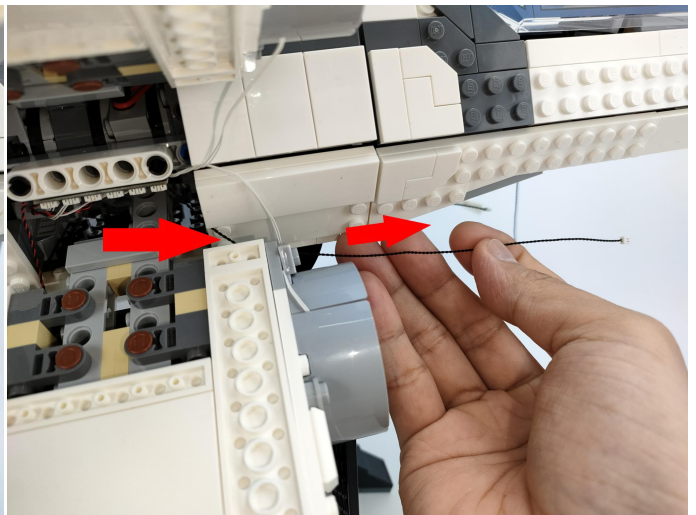
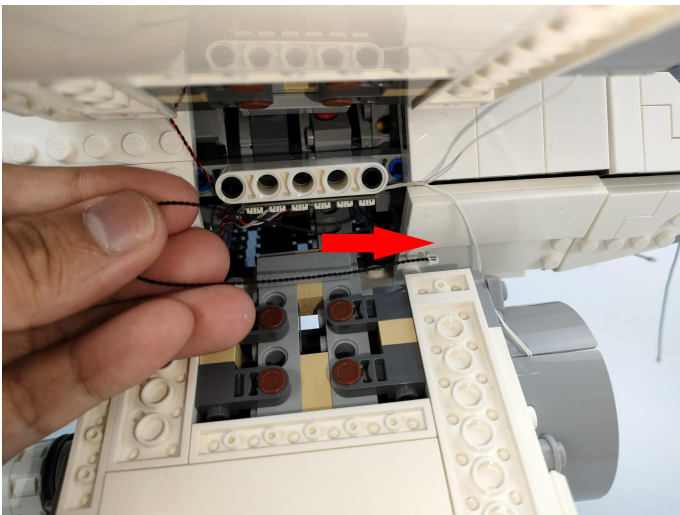




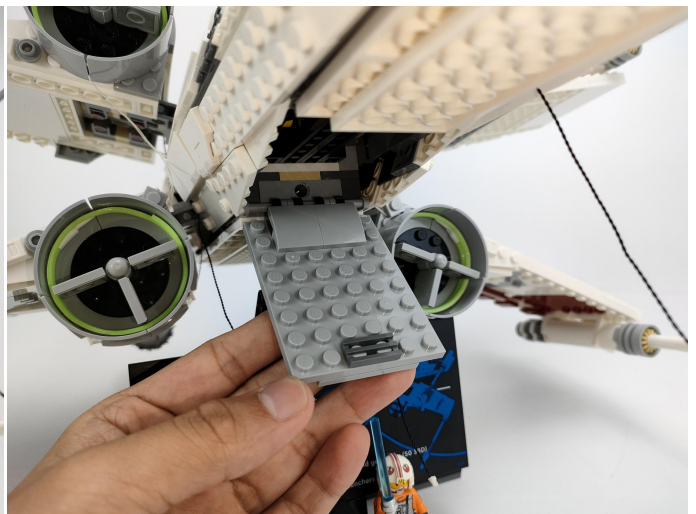
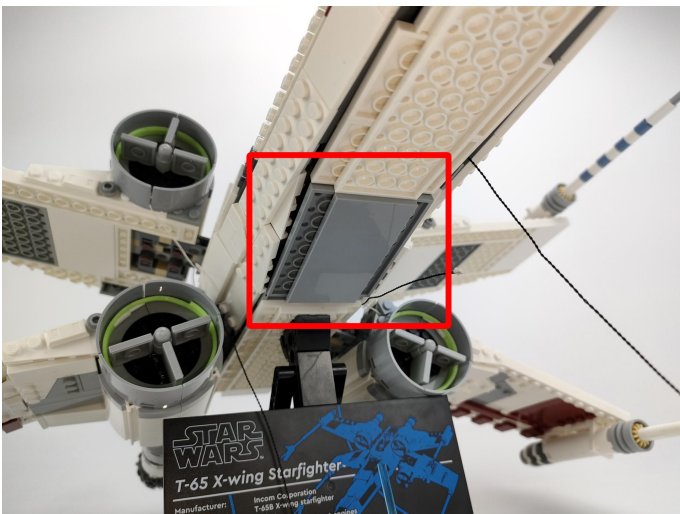
55



56



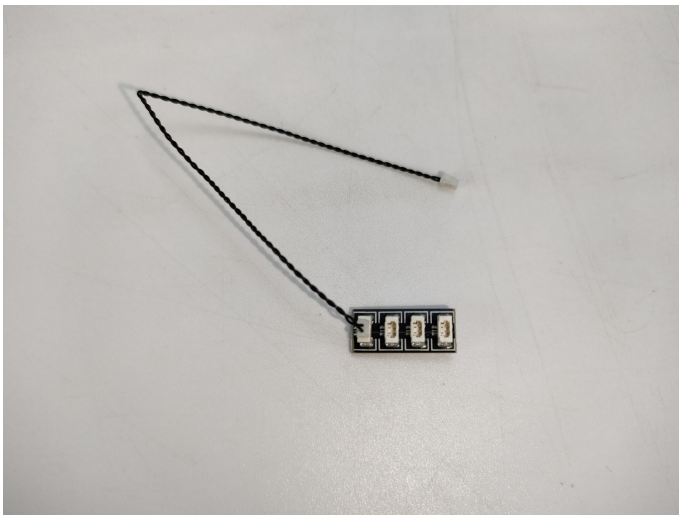
57



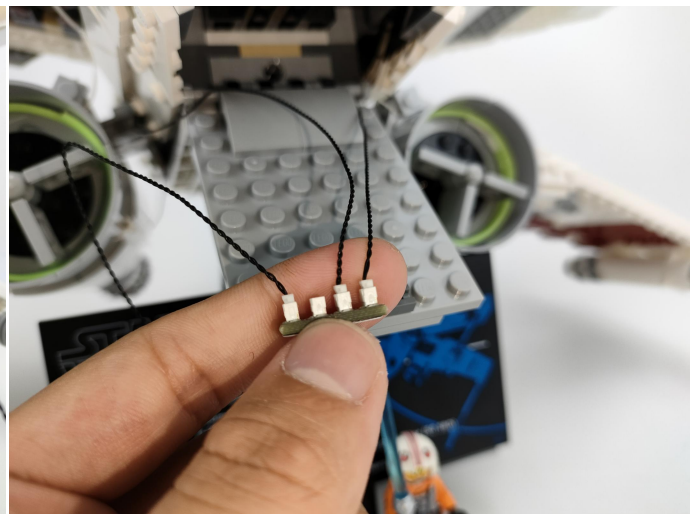
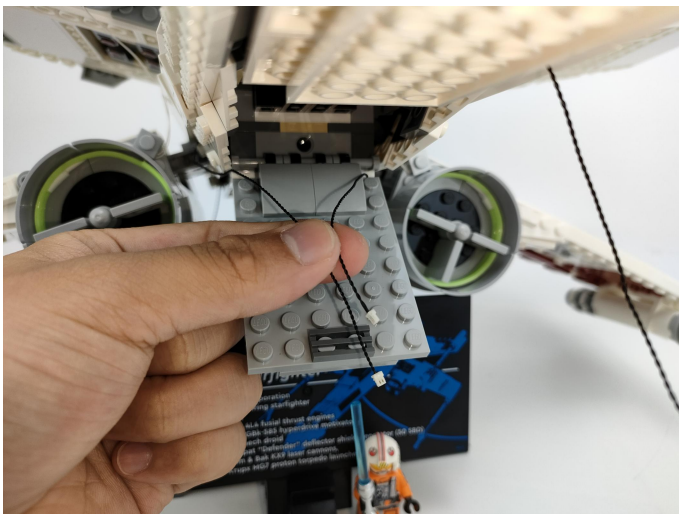
58



59

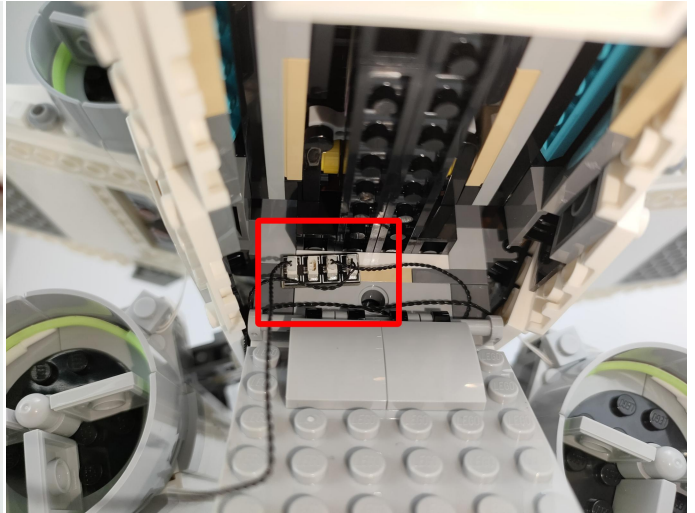
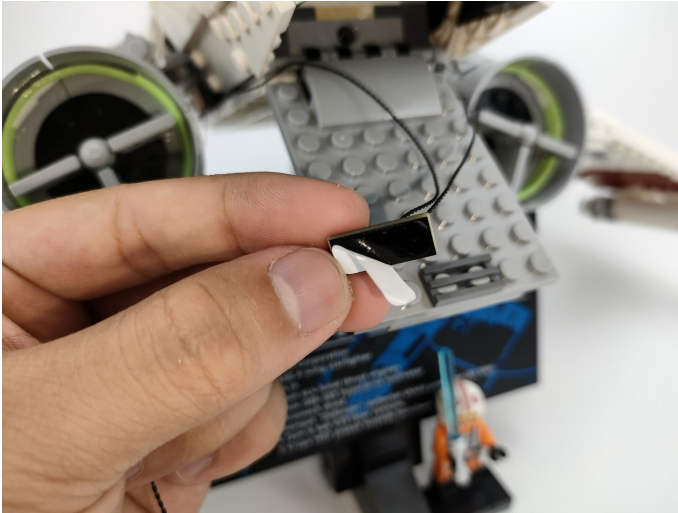


60

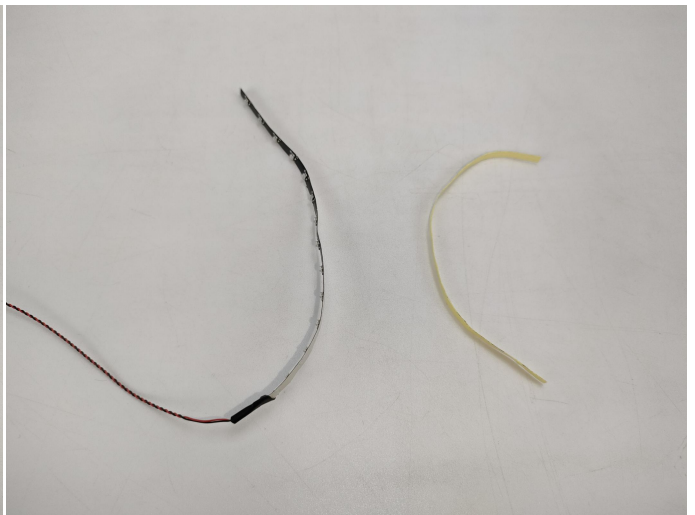




61



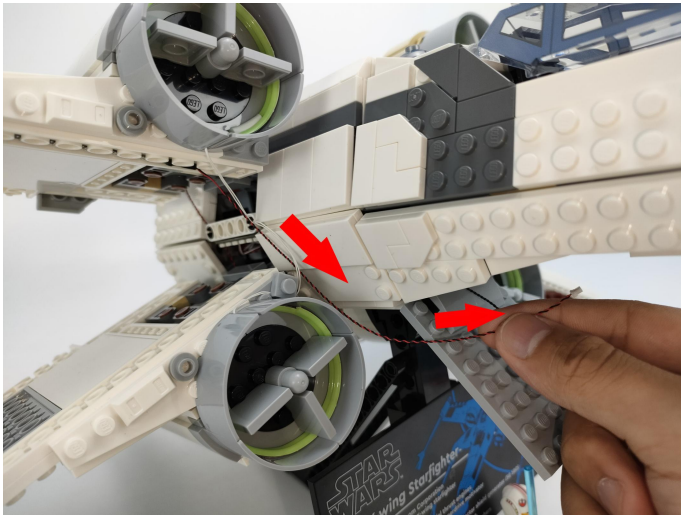
62



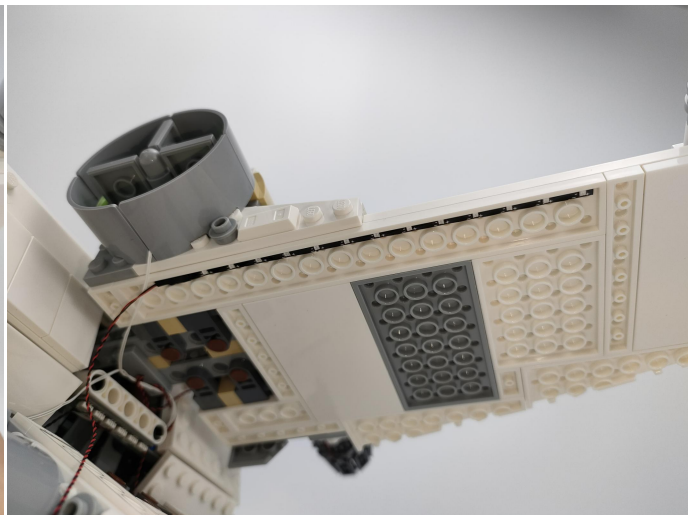
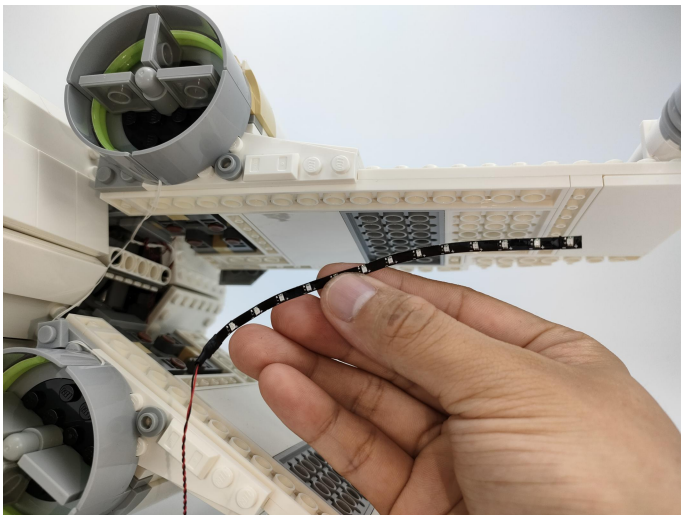
63



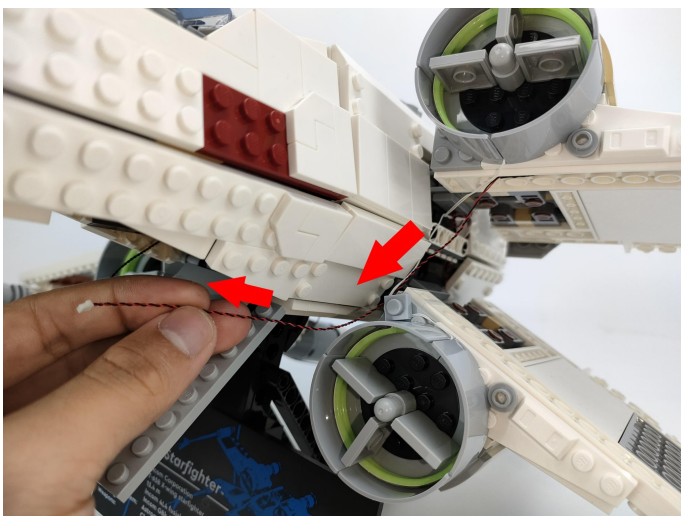
64



65



66

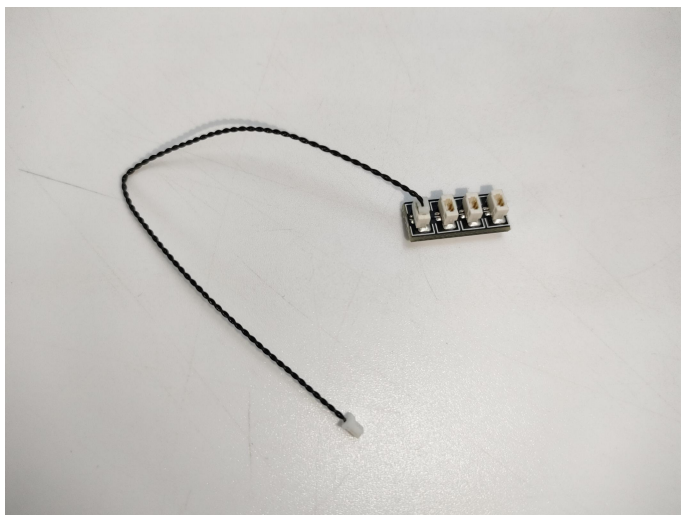




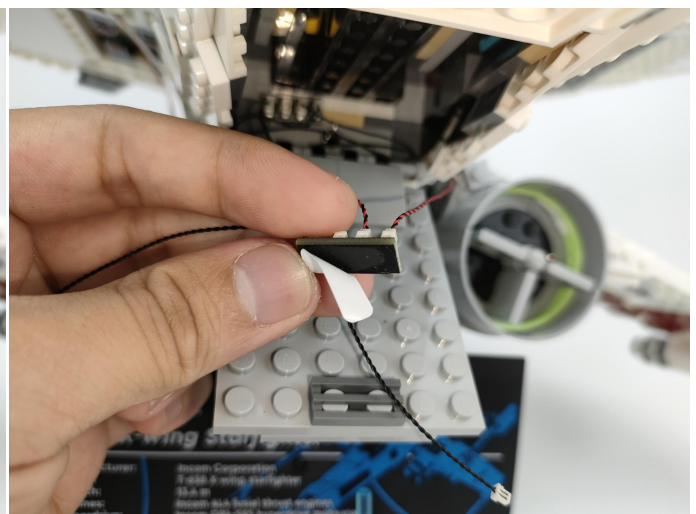
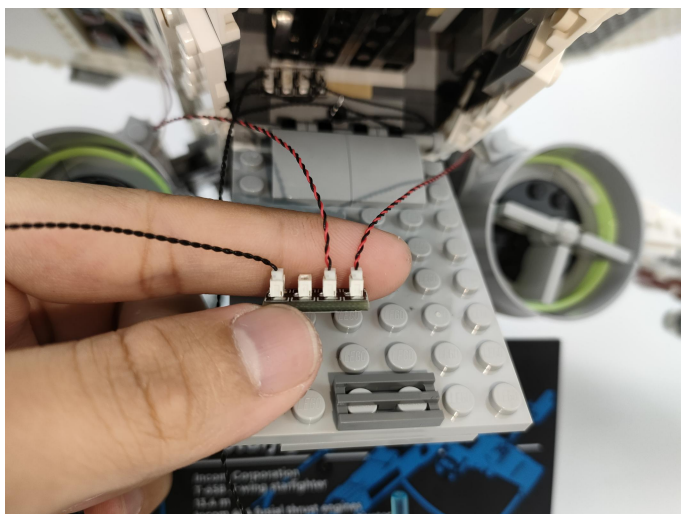
67



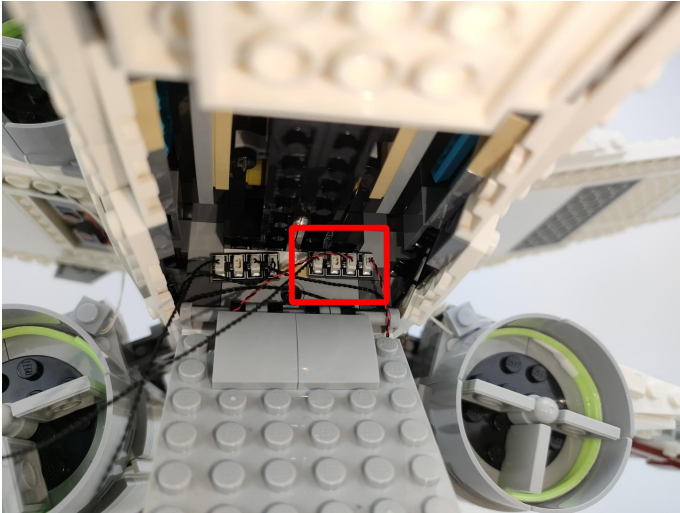
68



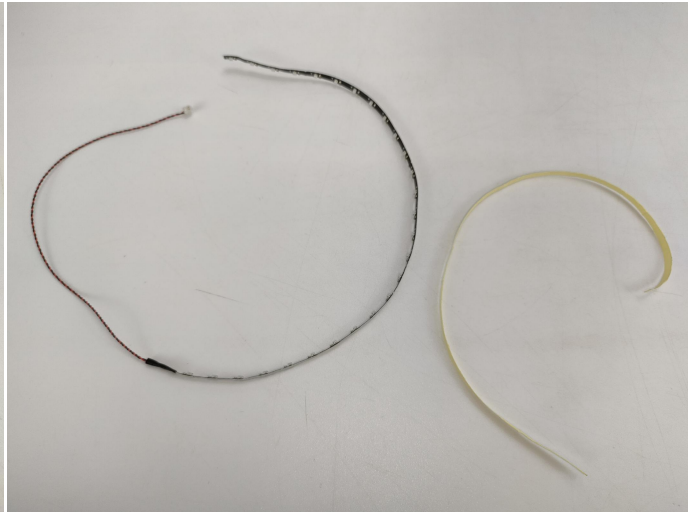
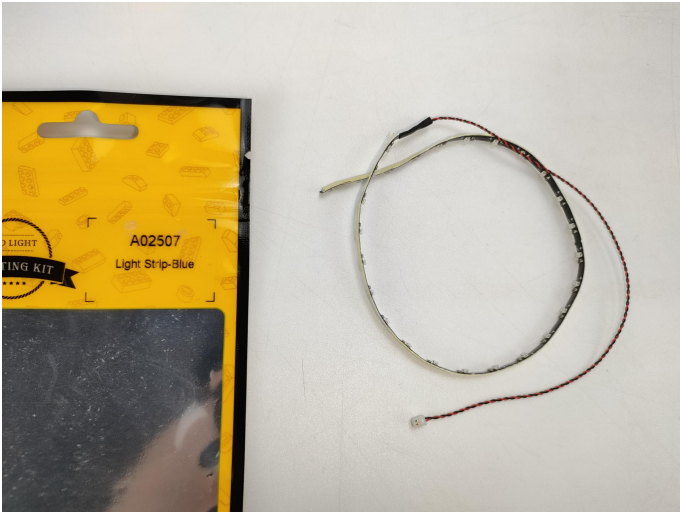
69



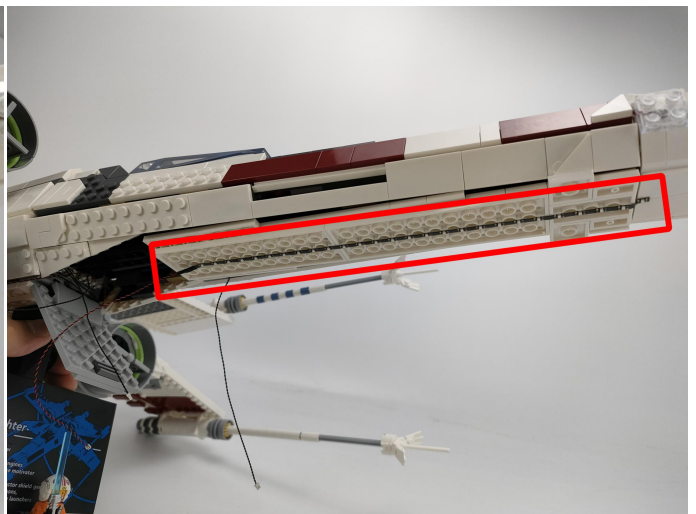
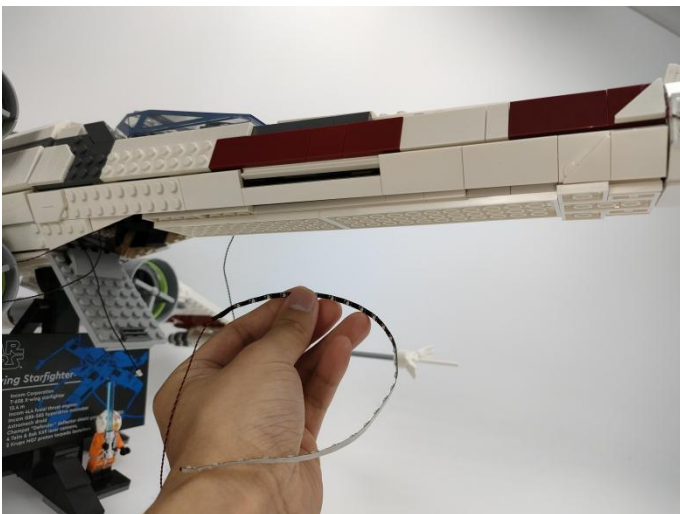
70



71



72





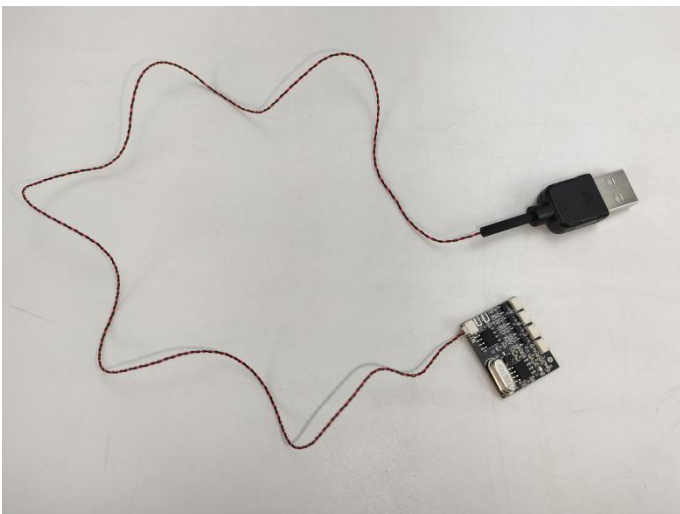
# 73



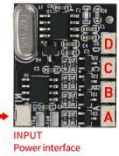
# 74



# 75

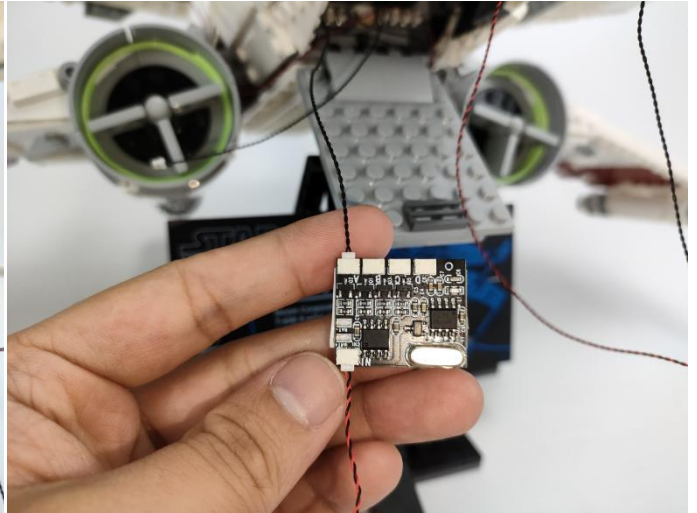
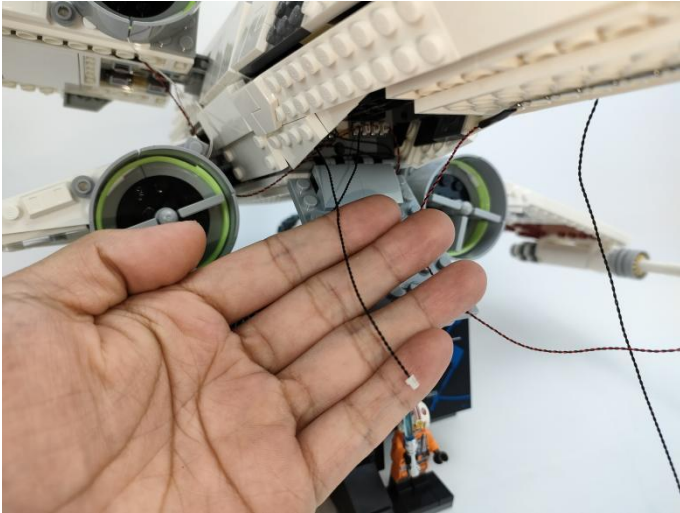


### Remote control function introduce

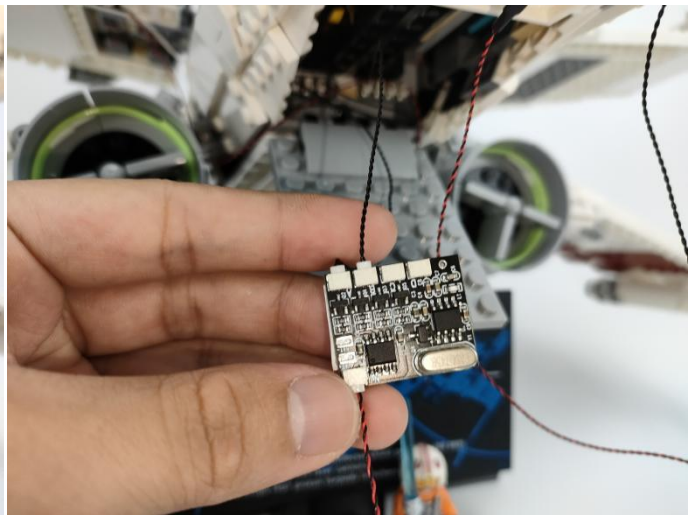
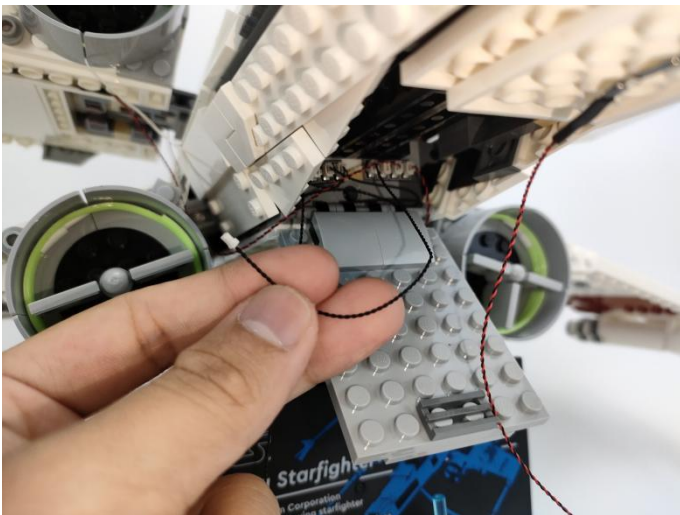


- ON:** All lights turn on sequentially. **OFF:** All lights are off.
- ☀️ Function 1: A, B, C, D are turned on slowly in sequence.
  - 🌬️ Function 2: Breathing light mode.
  - 🔄 Function 3: A and D the light is on and C and B flash alternately.
  - 🌊 Function 4: A the light is on, B, C, D flow light effect I.
  - 🌊 Function 5: A the light is on, B, C, D flow light effect II.
  - 🔄 Function 6: Quickly open from A to D in turn.
  - 🔄 Function 7: A, B, C, D flow light effect.
  - 🌊 Function 8: A, B, C, D flash alternately.
  - ⏸️ A: Turn A on/off B: Turn B on/off C: Turn C on/off D: Turn D on/off.
  - ⬆️ Increase frequency ⬇️ Decrease frequency.
  - 🌟 Brightness+ Increases brightness 🌟 Brightness- Decreases the brightness
- ON:** Alle Lichter werden nacheinander eingeschaltet. **OFF:** Alle Lichter sind aus.
- ☀️ 1. Funktion 1: A, B, C, D werden langsam nacheinander eingeschaltet.
  - 🌬️ 2. Funktion 2: Atemlichtmodus.
  - 🔄 3. Funktion 3: A und D bleiben an und C und B blinken abwechselnd.
  - 🌊 4. Funktion 4: A ist immer eingeschaltet, B, C, D fließendes Wasser Lichteffect I.
  - 🌊 5. Funktion 5: A ist immer eingeschaltet, B, C, D fließendes Wasser Lichteffect II.
  - 🔄 6. Funktion 6: Schnell nacheinander von A nach D öffnen.
  - 🔄 7. Funktion 7: A, B, C, D fließendes Wasser Lichteffect.
  - 🌊 8. Funktion 8: A, B, C, D blinken abwechselnd.
  - ⏸️ A: Schalten Sie A ein/aus. B: Schalten Sie B ein/aus. C: Schalten Sie C ein/aus. D: Schalten Sie D ein/aus.
  - ⬆️: Frequenz erhöhen. ⬇️: Frequenz verringern.
  - 🌟 Helligkeit+: Erhöht die Helligkeit. 🌟 Helligkeit-: Verringert die Helligkeit.

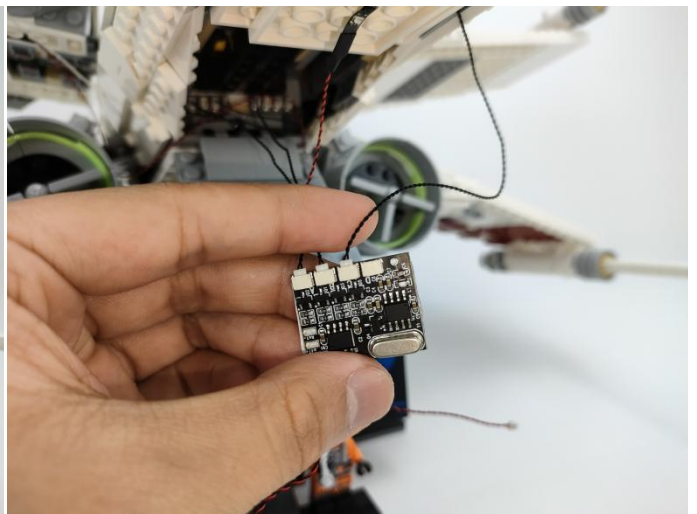
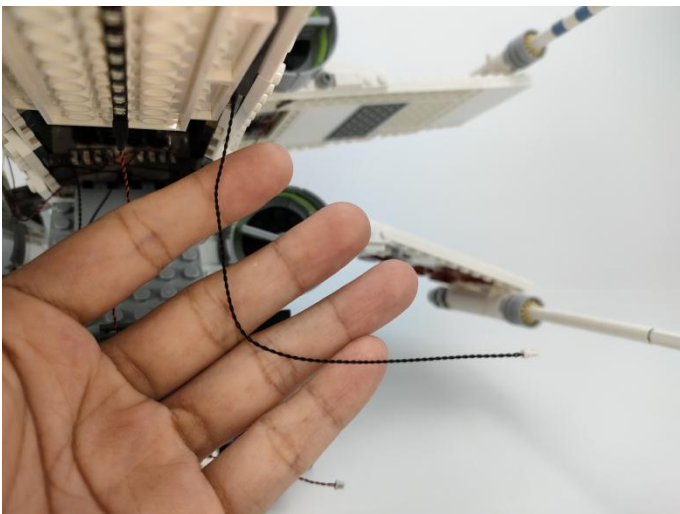
76



77

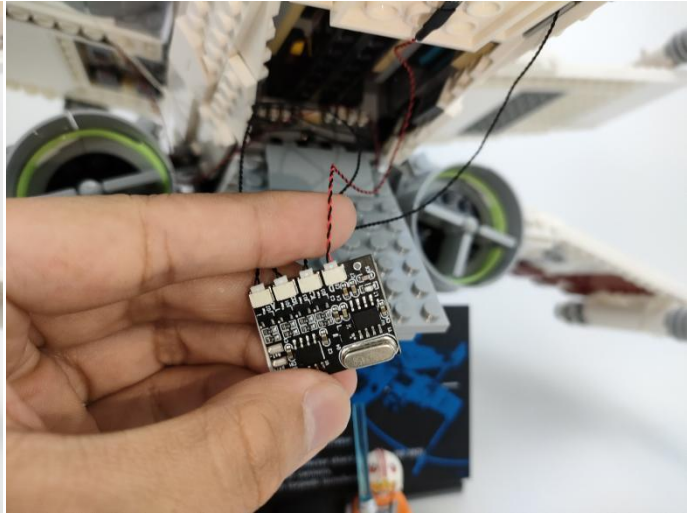
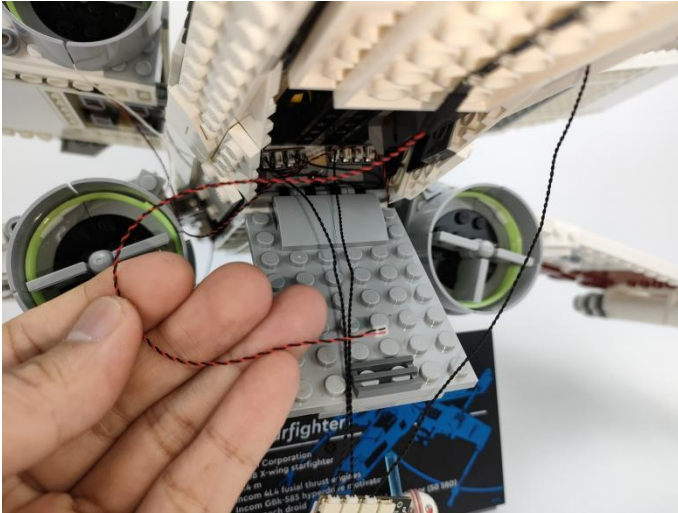


78

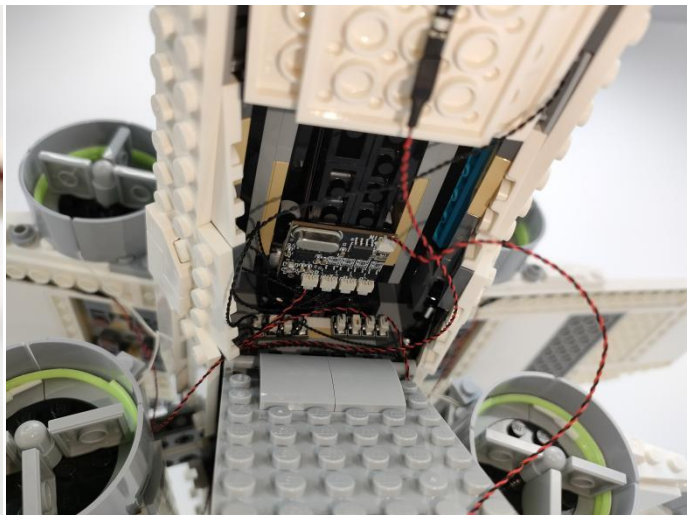
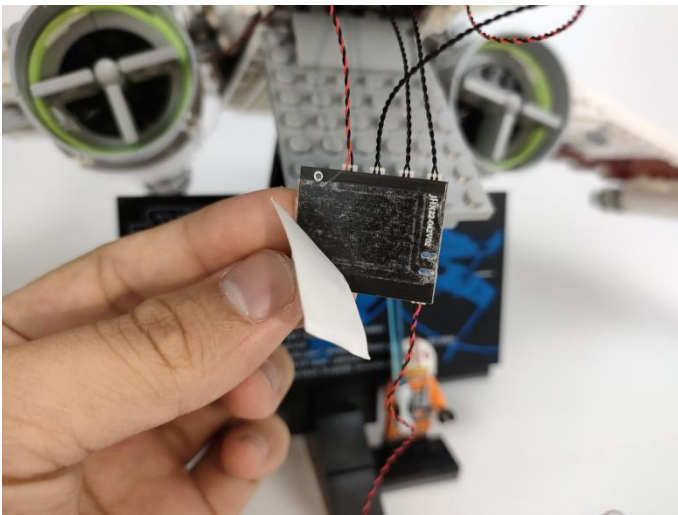




79



80



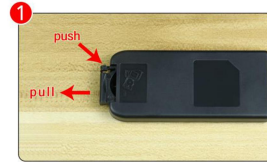
81



# 82



The remote control does not contain batteries, please buy a CR2025 or CR2032 button battery in the nearest store and install it in the remote control.



# 83



## Remote control function introduce



- ON:** All lights turn on sequentially. **OFF:** All lights are off.
- ☁️ Function 1: A, B, C, D are turned on slowly in sequence.
  - 🌬️ Function 2: Breathing light mode.
  - ⚡️ Function 3: A and D the light is on and C and B flash alternately.
  - 🌊 Function 4: A the light is on, B, C, D flow light effect I.
  - 🌊 Function 5: A the light is on, B, C, D flow light effect II.
  - 🌀 Function 6: Quickly open from A to D in turn.
  - 🌀 Function 7: A, B, C, D flow light effect.
  - 🌊 Function 8: A, B, C, D flash alternately.
  - ⚡️ A: Turn A on/off. B: Turn B on/off. C: Turn C on/off. D: Turn D on/off.
  - ↑ Increase frequency. ↓ Decrease frequency.
  - ★ Brightness+ : Increases brightness. ★ Brightness- : Decreases the brightness.
- ON:** Alle Lichter werden nacheinander eingeschaltet. **OFF:** Alle Lichter sind aus.
- ☁️ 1. Funktion 1: A, B, C, D werden langsam nacheinander eingeschaltet.
  - 🌬️ 2. Funktion 2: Atemlichtmodus.
  - ⚡️ 3. Funktion 3: A und D bleiben an und C und B blinken abwechselnd.
  - 🌊 4. Funktion 4: A ist immer eingeschaltet, B, C, D fließendes Wasser Lichteffect I.
  - 🌊 5. Funktion 5: A ist immer eingeschaltet, B, C, D fließendes Wasser Lichteffect II.
  - 🌀 6. Funktion 6: Schnell nacheinander von A nach D öffnen.
  - 🌀 7. Funktion 7: A, B, C, D fließendes Wasser Lichteffect.
  - 🌊 8. Funktion 8: A, B, C, D blinken abwechselnd.
  - ⚡️ A: Schalten Sie A ein/aus. B: Schalten Sie B ein/aus. C: Schalten Sie C ein/aus. D: Schalten Sie D ein/aus.
  - ↑: Frequenz erhöhen. ↓: Frequenz verringern.
  - ★ Helligkeit+ : Erhöht die Helligkeit. ★ Helligkeit- : Verringert die Helligkeit.



**Good job, you've done all the installation steps, power it up and enjoy your work.**



**The battery box can also power the set. If it is necessary to change the power supply , prepare three AAA batteries, install them in the battery box, turn on the switch on the battery box, remove the plug of the USB Power Cable from the socket of the expansion board,plug the plug of the battery box to the same socket in the expansion board to power the suit as well.**

**THANKS**