

10308 Holiday Main Street P42403

- P42403 is the unique code of lighting set, we use this to accurately identify the product you purchased and the corresponding manuals and services you need to obtain. Please make sure your product code is the same as the label on the back of the box shown “10308 P42403”.
- Installation requires a lot of patience and great observation that your LEGO bricks will come alive when you get this finished. The bricks with lighting as below, so make sure you're ready and let's get started.



Strategies for the Installation

This instruction divides three sections to complete the installation of the lighting set.

Section A: Check the type and quantity of components.

The quantity and type of components of each products are different and it needs to be carefully checked to make sure there do have enough material. The type of components is indicated by the label on the bag.

Section B: Test that each components is working properly.

Each components is made individually so it is necessary to test that each components is working properly to avoid the situation that the lighting does not work .

Section C: laying out components following the instruction.

Our material is very small but not fragile, just be reminded that don't to pull the wires too hard. For different people, there may be some installation steps that you can't understand. Please look at the previous and later installation step

Section A: Check the type and quantity of components.

There are 18 bags in this set. The name and quantities of specific components are as shown , please check carefully.

| Label | Content | Quantity |
|-------------------------------------|-------------------------------------|----------|
| Light-15CM Warm White | Light-15CM Warm White | 3 |
| Light-15CM White | Light-15CM White | 1 |
| LED Strip Warm White | LED Strip Warm White | 6 |
| LED Strip Slow Flash Multi-Colour | LED Strip Slow Flash Multi-Colour | 1 |
| 15cm 2x4 Double row light bar-White | 15cm 2x4 Double row light bar-White | 2 |
| Expansion Board | 6 Socket Expansion Board | 2 |
| | 4 Socket Expansion Board | 2 |
| Power Supply | Power Supply | 1 |
| Connecting Cable 5CM | Connecting Cable 5CM | 4 |
| Connecting Cable 15CM | Connecting Cable 15CM | 2 |
| Connecting Cable 50CM | Connecting Cable 50CM | 3 |
| Connecting Cable 20CM | Connecting Cable 20CM | 2 |
| Flash Light-15CM Red | Flash Light-15CM Red | 1 |
| Lamppost-Black-30cm Warm White | Lamppost-Black-30cm Warm White | 1 |
| Multi-Colour String | Multi-Colour String | 1 |
| Multi-Colour Strip | Multi-Colour Strip | 1 |
| Light Strip-Warm White | Light Strip-Warm White | 1 |
| Remote Control | Remote Control | 1 |
| Components | | |

Please contact us immediately if there have any missing components.

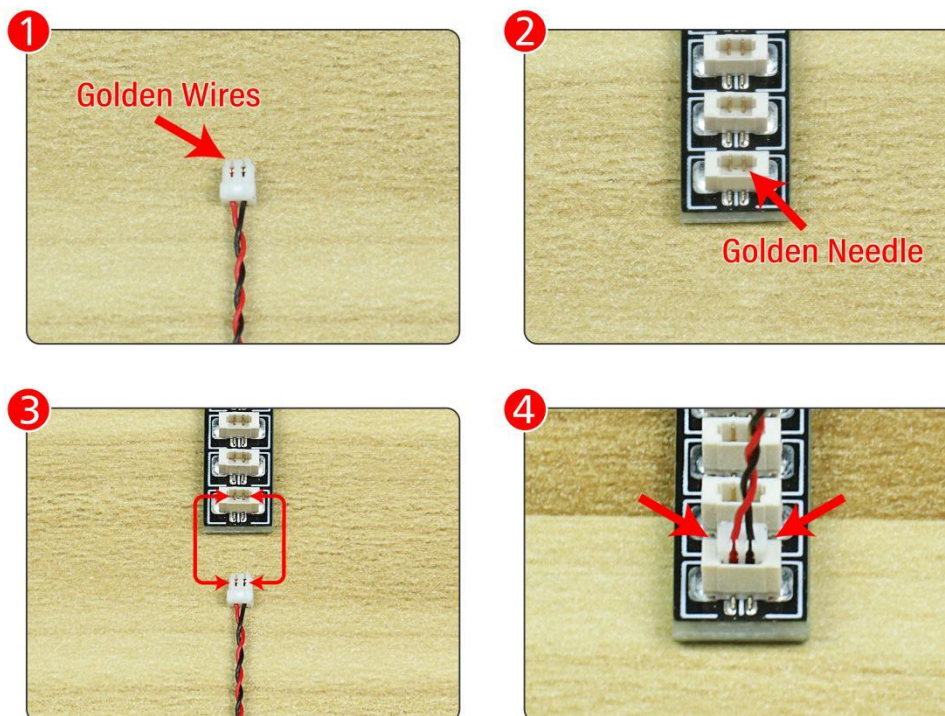
Section B: Test that each components is working properly.

We need a structure to test all lights, so take out the bag with label “USB Power Cord” and “Expansion Boards” as follows.



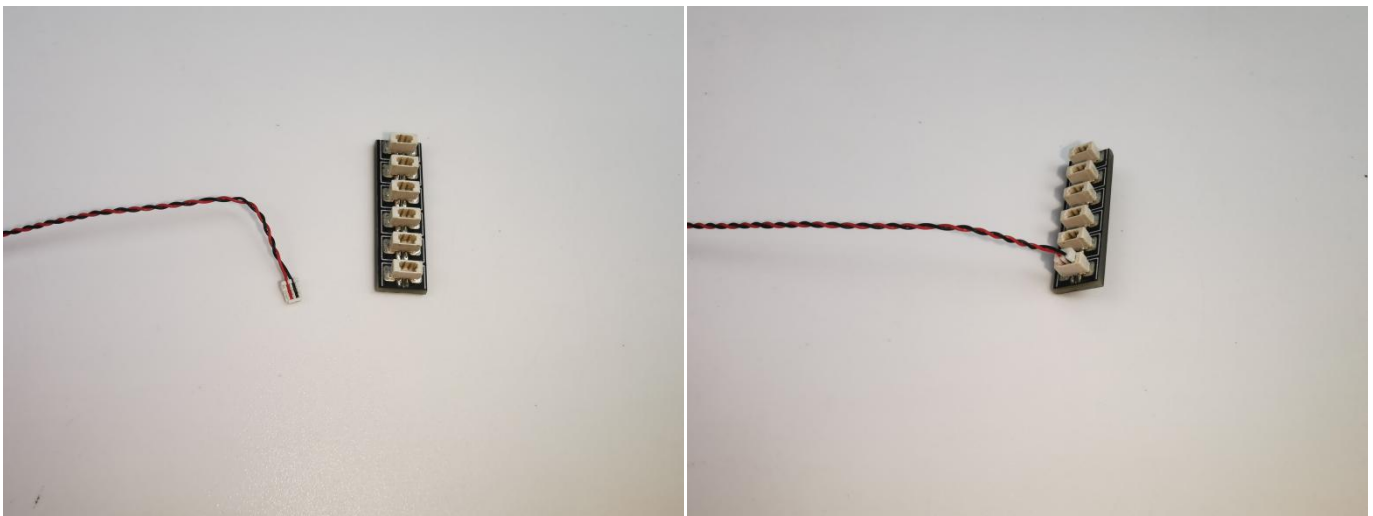
It is worth reminding that our products are all customized. They have a unique way of connecting. The white plug on wire and the socket of the expansion board need to be connected together to transmit power.

Note that on one side of the white plug you can see two very small golden wires that should be connected to the two golden needles in socket of the expansion board. shown as blow.



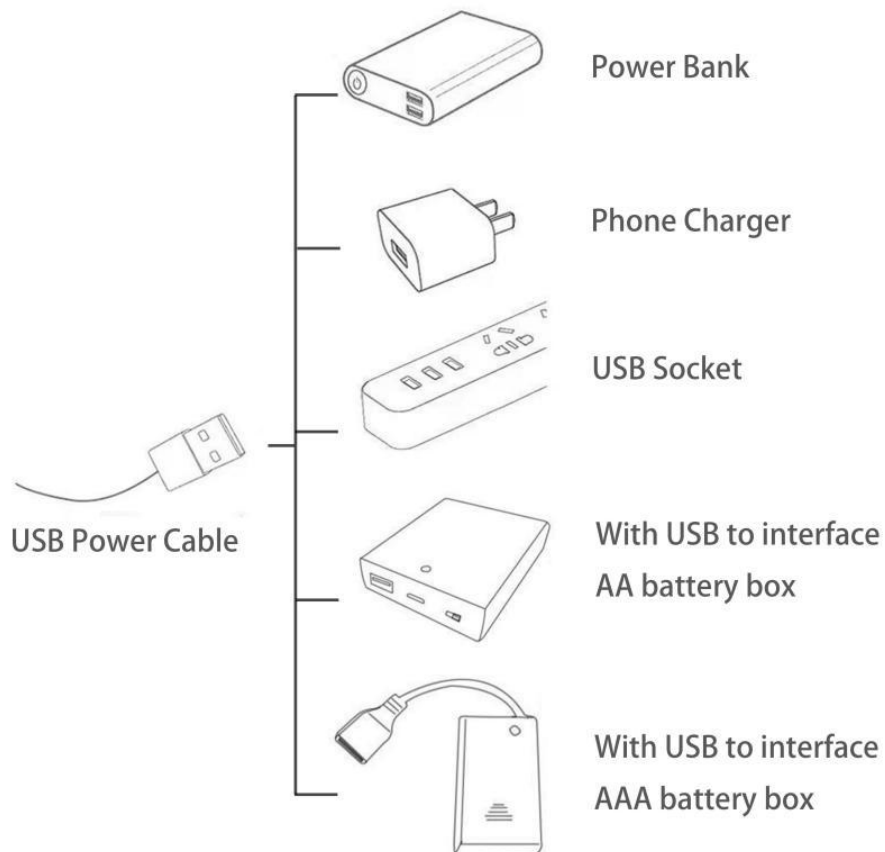
All our connections between plug and socket are all the same as shown above. So for any such structure with plug and socket, please pay attention to the golden wire of the plug and the golden needle of the socket, they must be touched together.

The connection method between the USB Power Cord and Expansion Boards is as follows:



The USB Power Cord can be powered by phone chargers, power banks, etc.

USB connectors to connect devices



This instruction will use the power bank as power supply . The test structure is shown as follow. All lamp in this set will be tested by this structure.



When we test " Light-15CM Warm White" particles,Take out the bag labelled " Light-15CM Warm White".Take out three of the light and connect it to the socket. Turn on the power bank, the light will turn on normally as shown below.



Test each lamp according to this method. It should be noted that after the test, the lamp must be returned to the corresponding bag to avoid confusion of types.



The components needs to be tested in this set is 1*Light-15CM White,6* LED Strip Warm White,1* LED Strip Slow Flash Multi-Colour,1* Flash Light-15CM Red,1* Multi-Colour Strip,1* Light Strip-Warm White,2* 15cm 2x4 Double row light bar-White,1* Lamppost-Black-30cm Warm White,1* Multi-Colour String.

Please contact us immediately if any components don't work.

Section C: laying out components following the instruction.

1



2



3



4



5



6

Tips

The plate without slit:

The plate without slit:

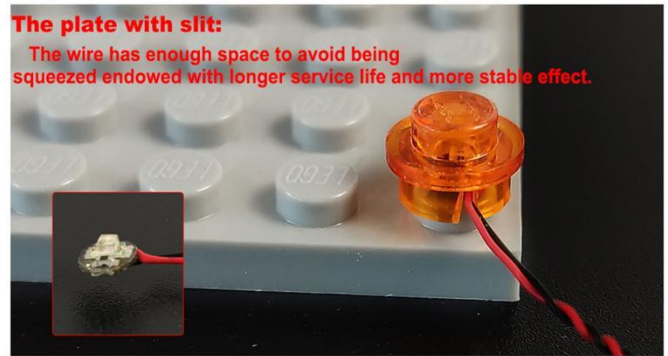
The squeeze causes the protective layer of the wire to be torn apart, the positive and negative wires touch together, and the set is short-circuited and the hot or wire is crushed, the wire to be disconnected and don't work.



The plate with slit:

The plate with slit:

The wire has enough space to avoid being squeezed endowed with longer service life and more stable effect.



The slit on the the plate round 1X1 are hand-made to avoid squeeze the wire and cause short circuit and abnormalheat during installation.

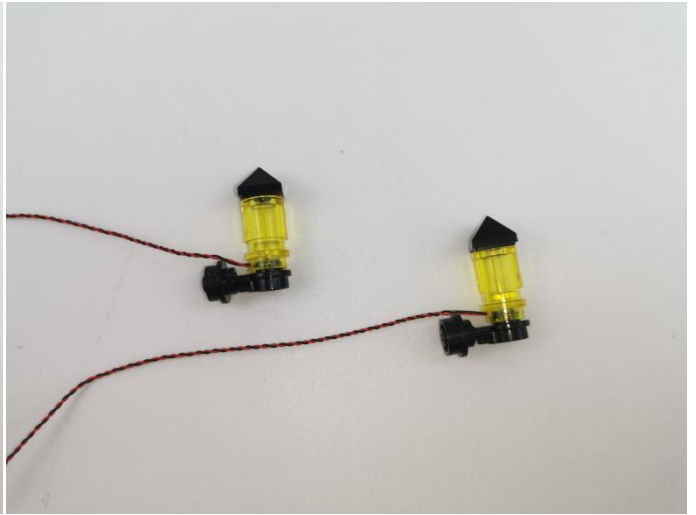
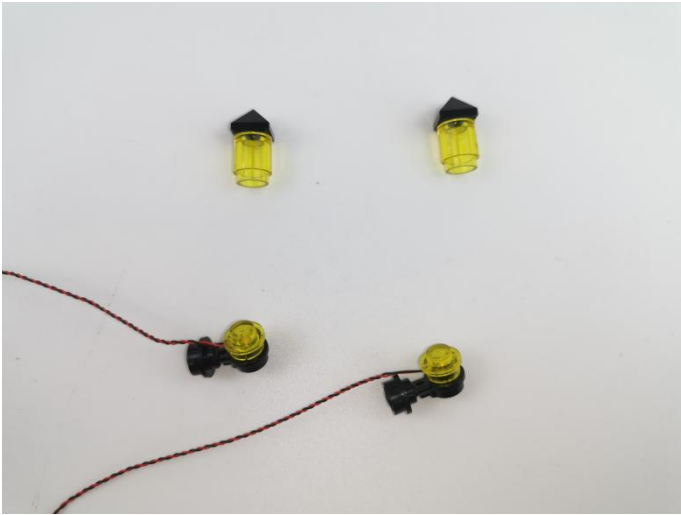
7



8



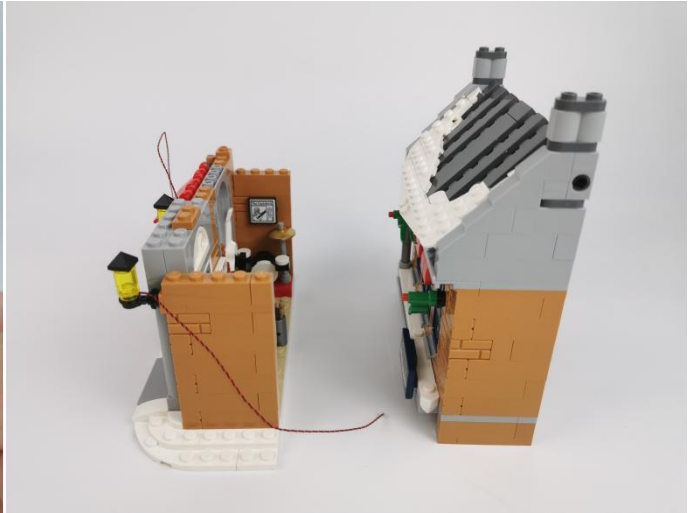
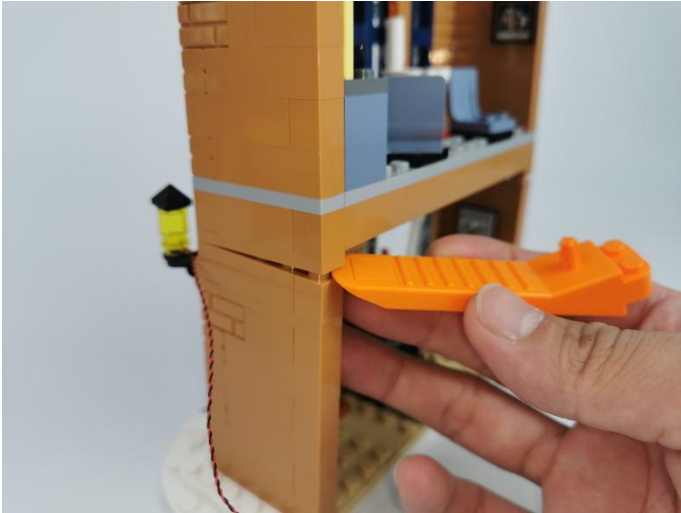
9



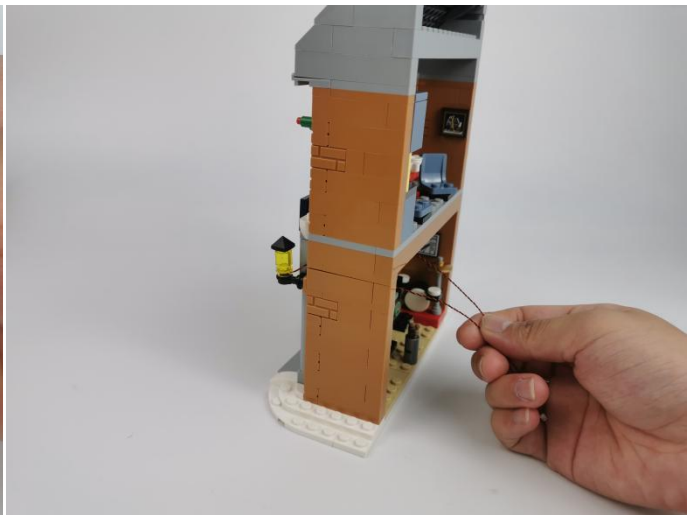
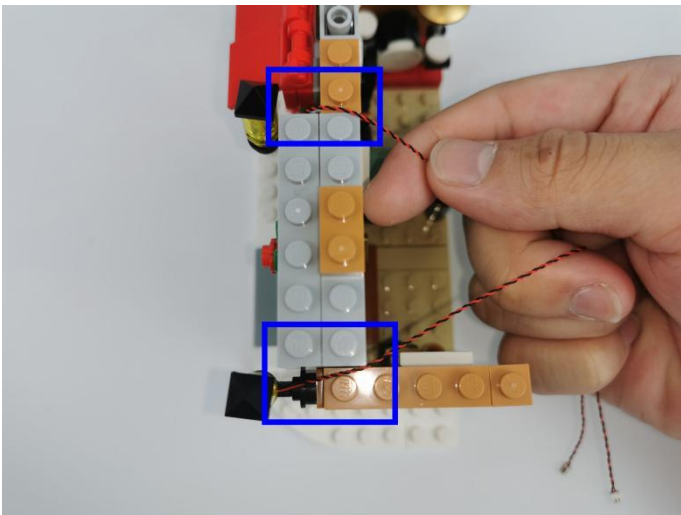
10



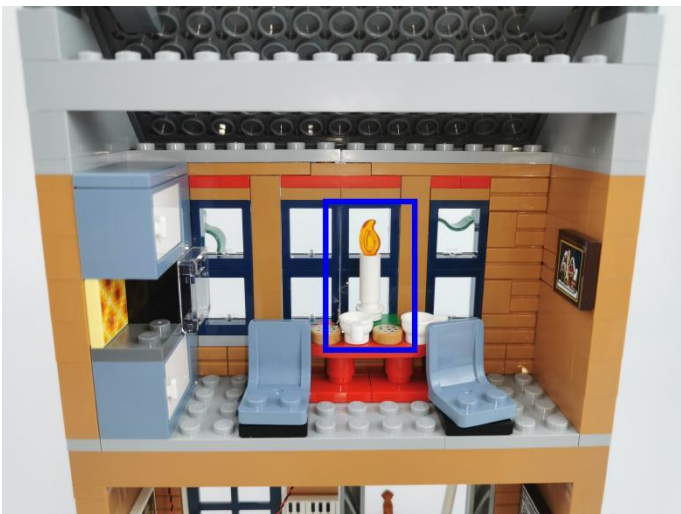
11



12



13



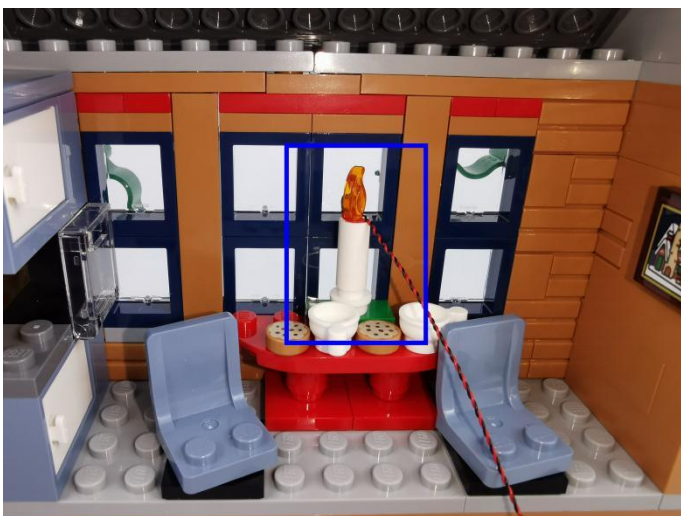
14



15



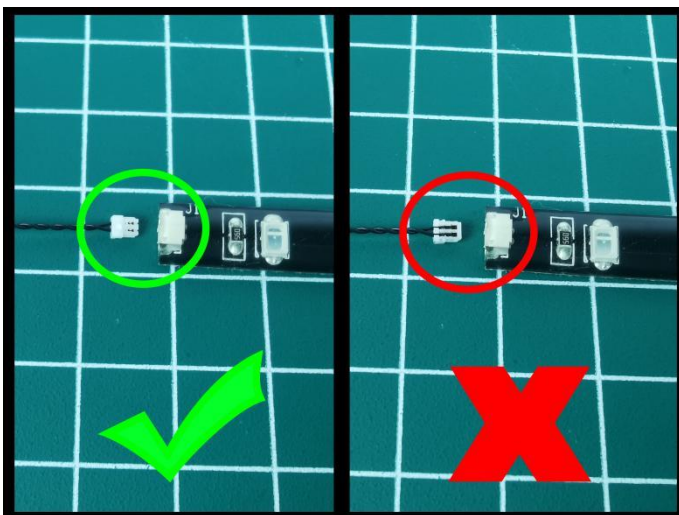
16



17



18



19



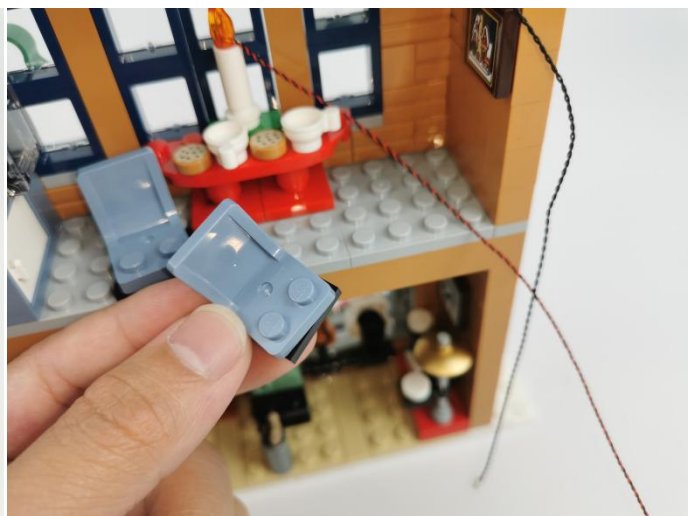
20



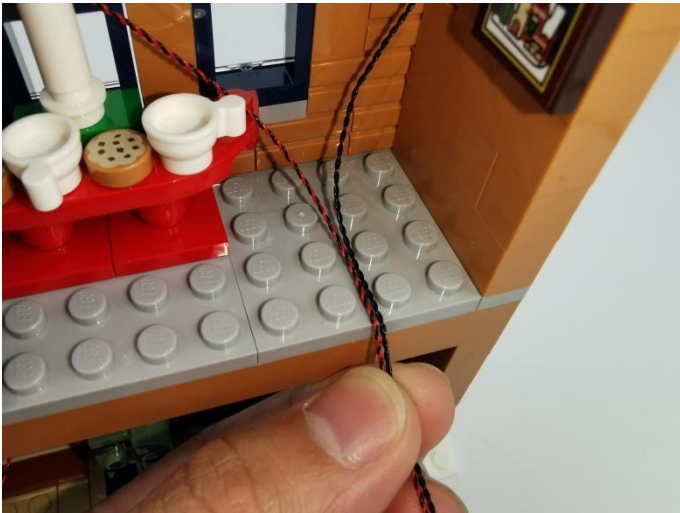
21



22



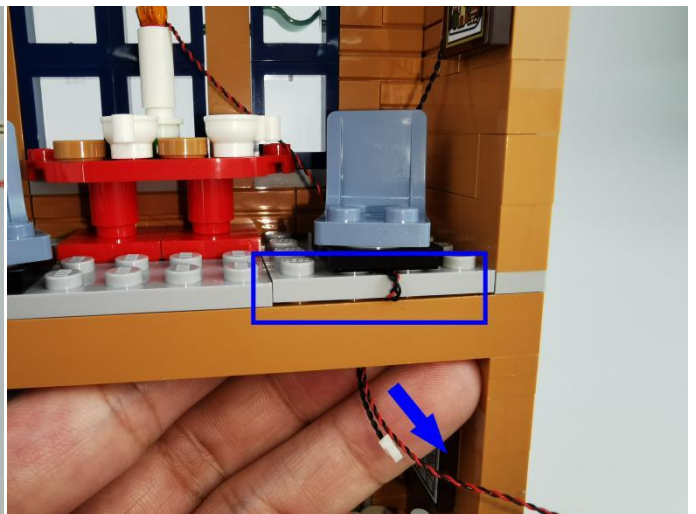
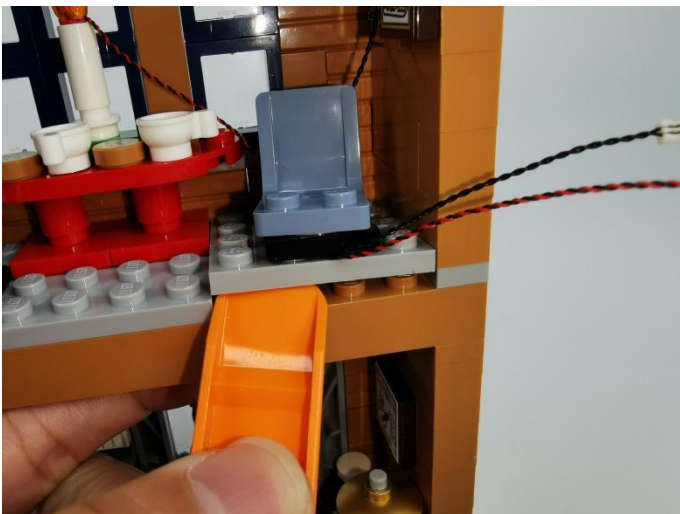
23



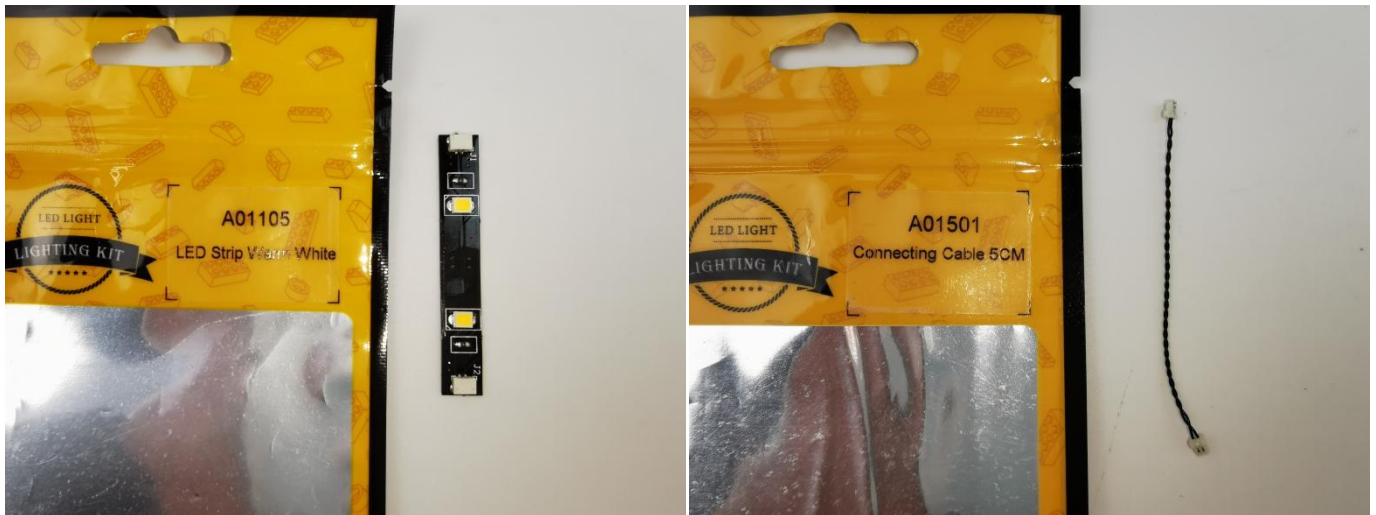
24



25



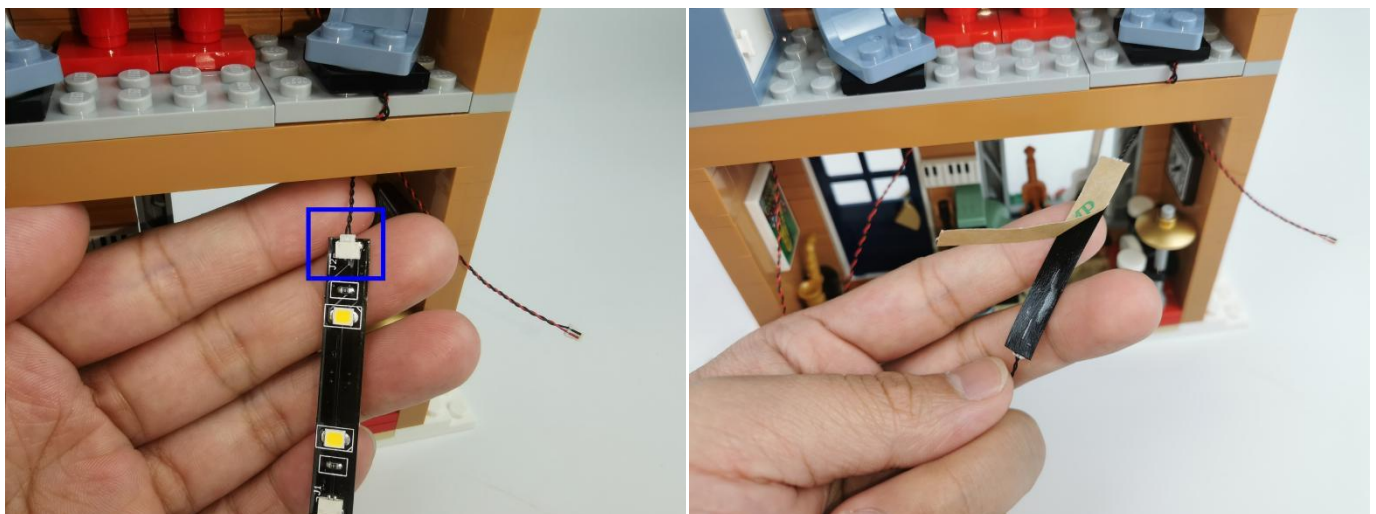
26



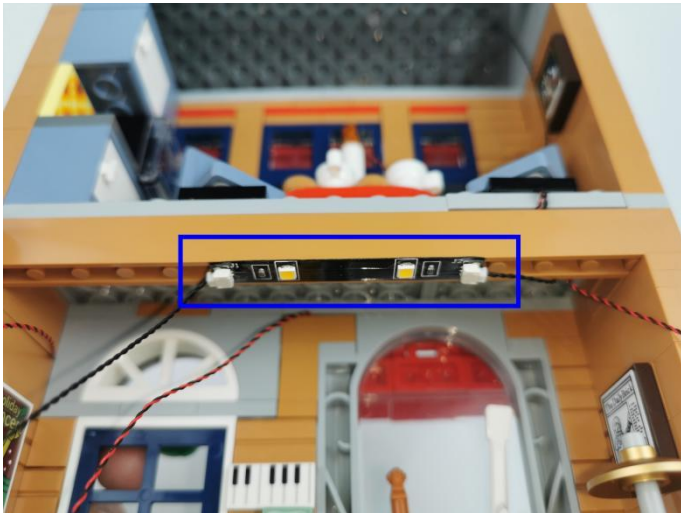
27



28



29



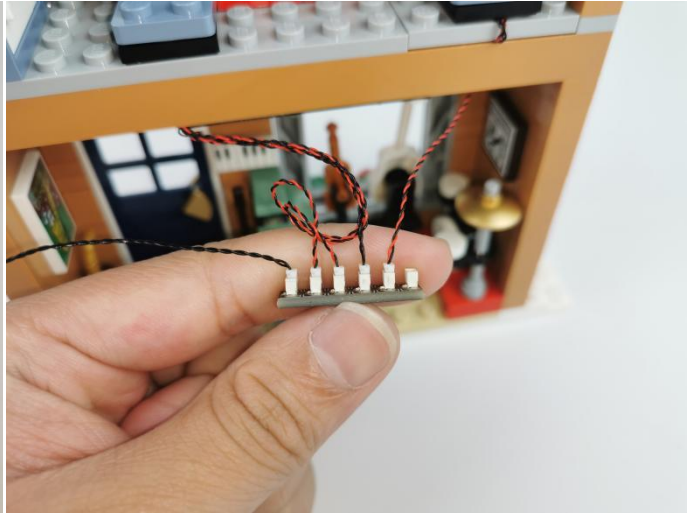
30



31



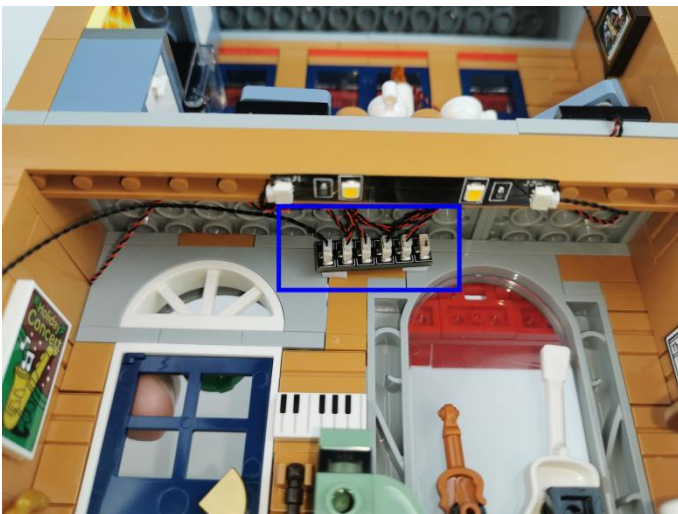
32



33



34



35



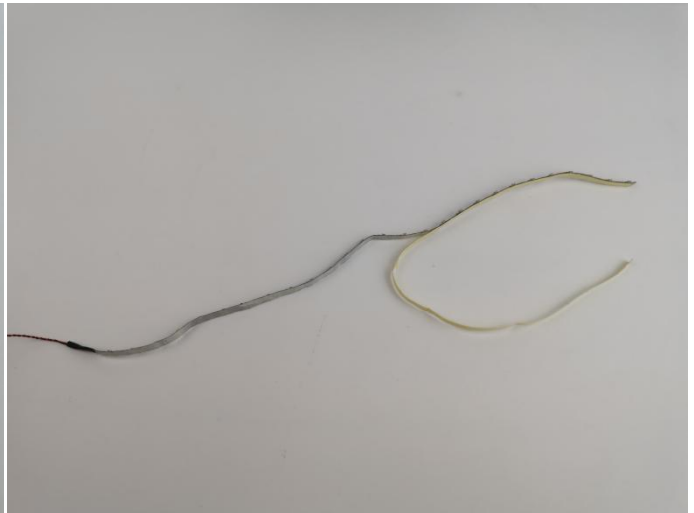
36



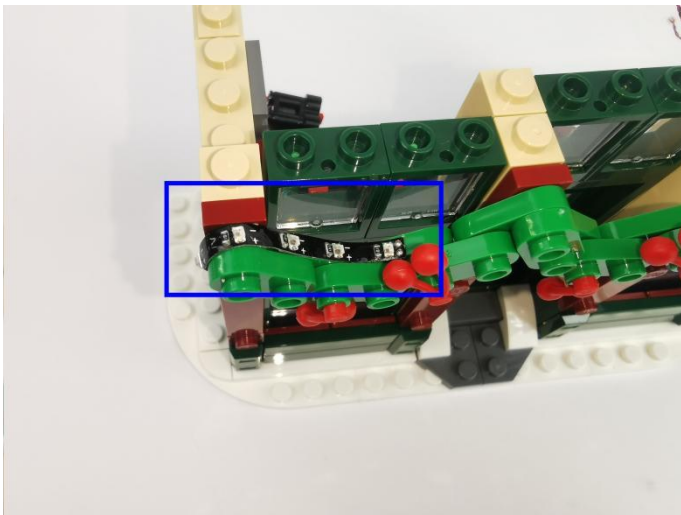
37



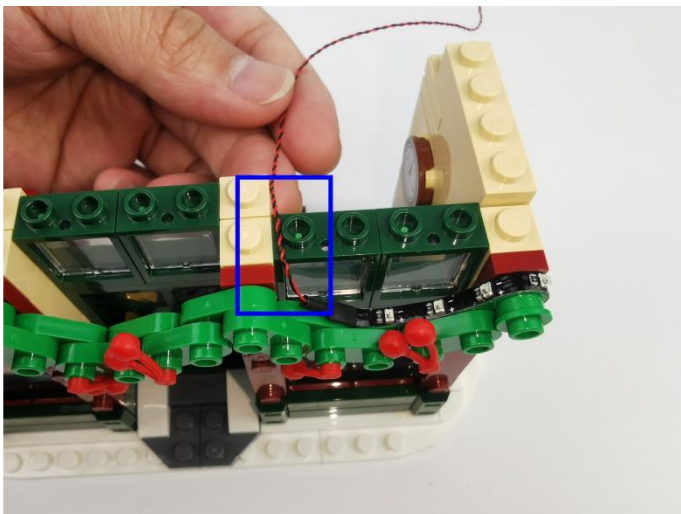
38



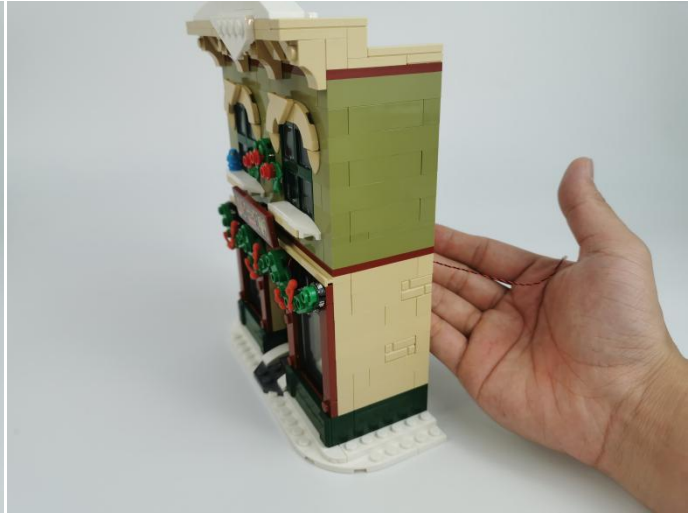
39



40



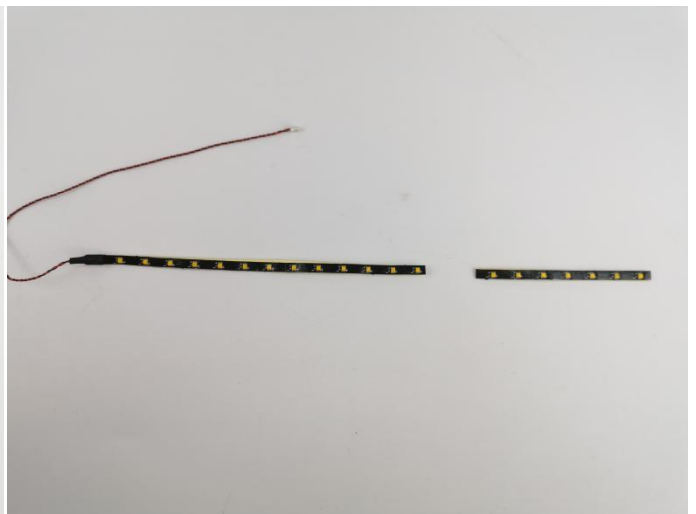
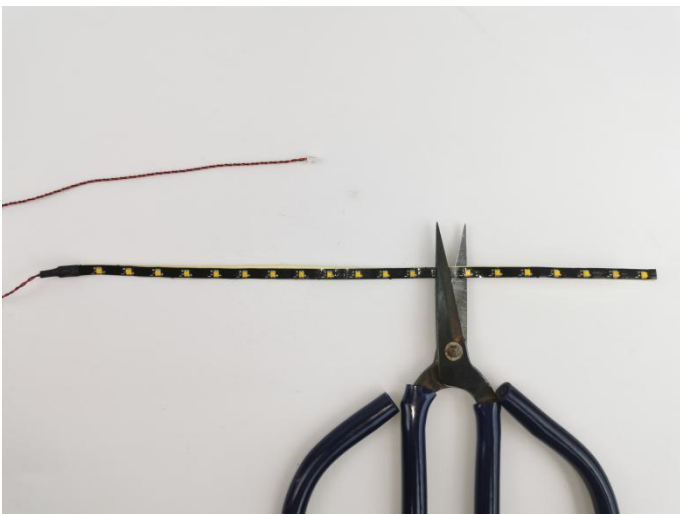
41



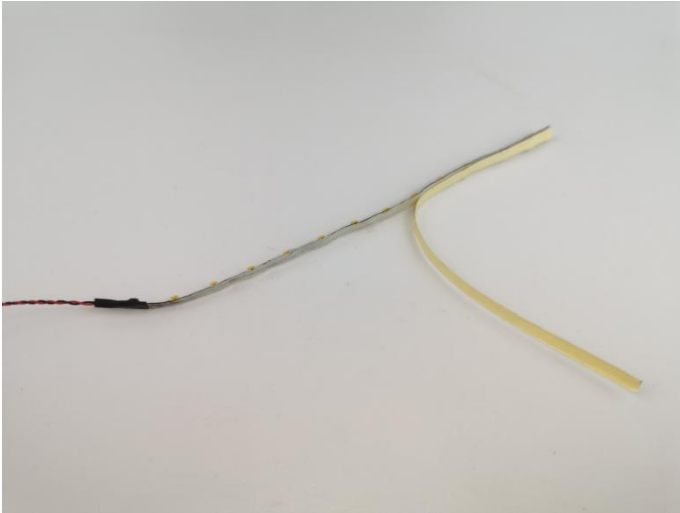
42



43



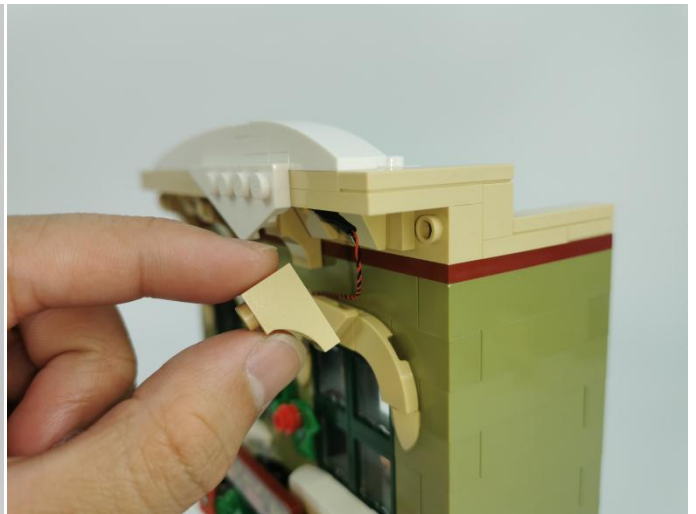
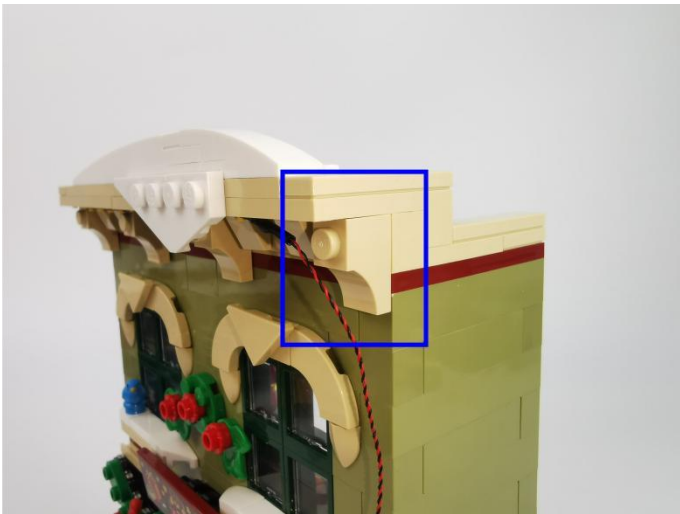
44



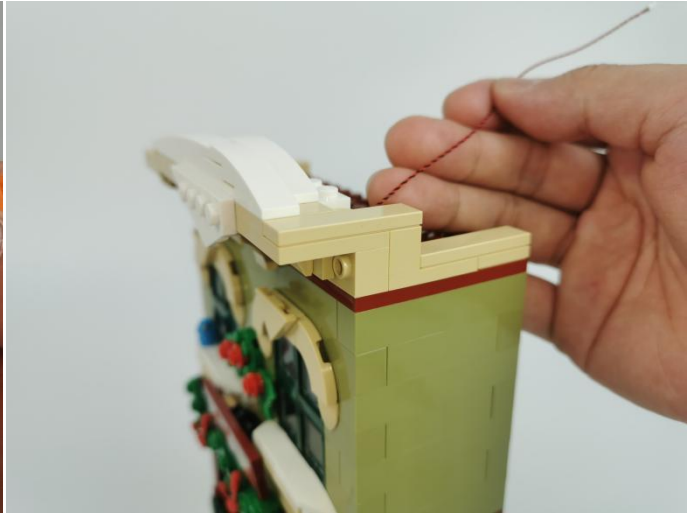
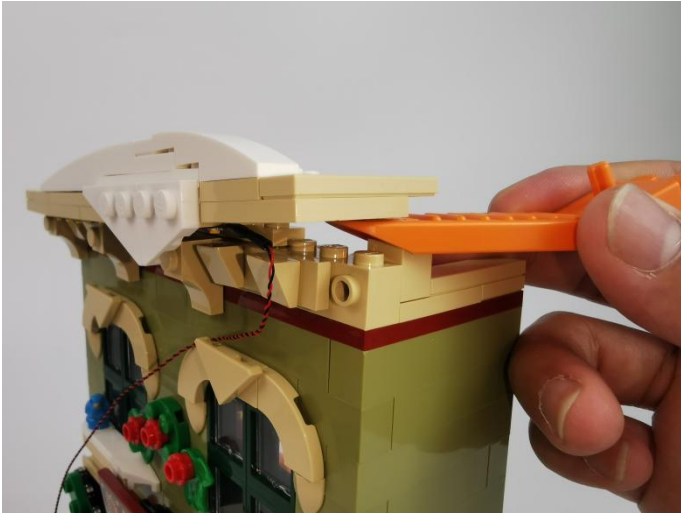
45



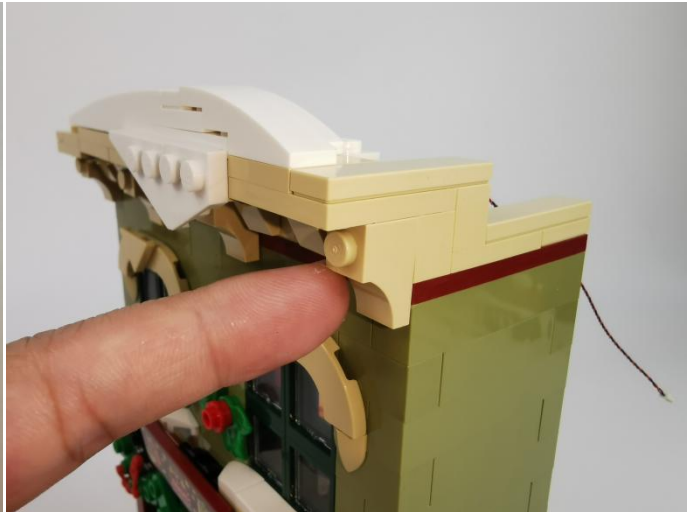
46



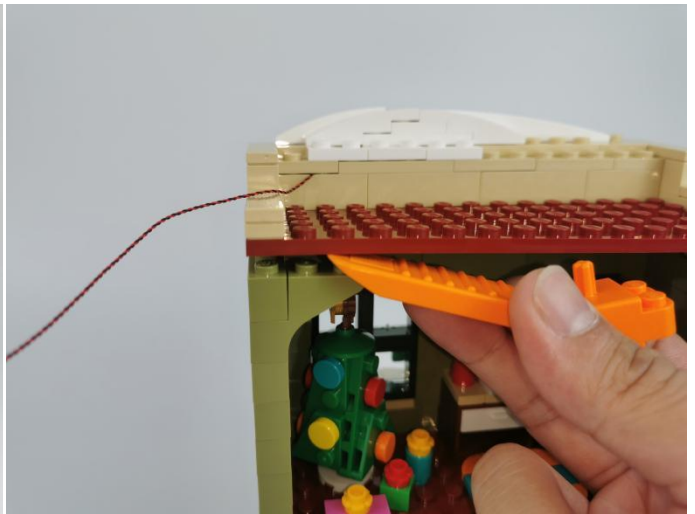
47



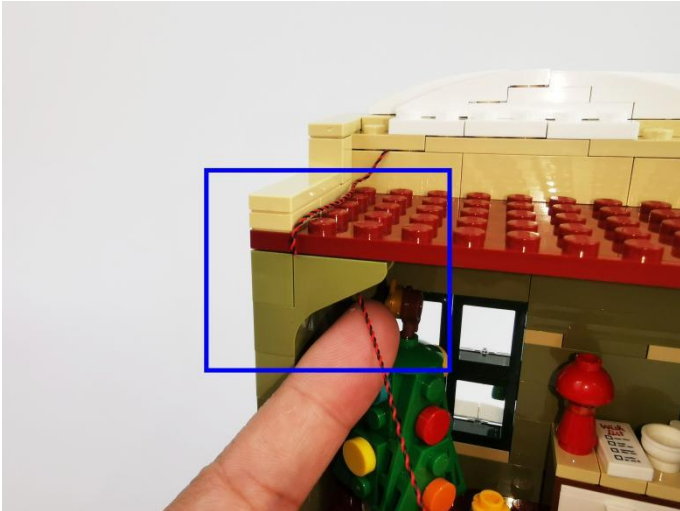
48



49



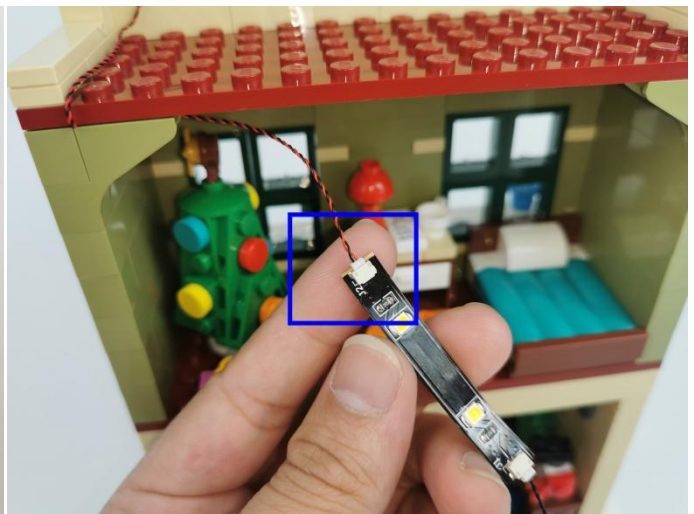
50



51



52



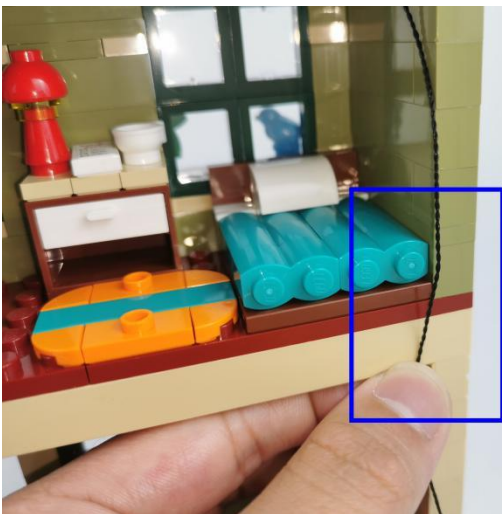
53



54



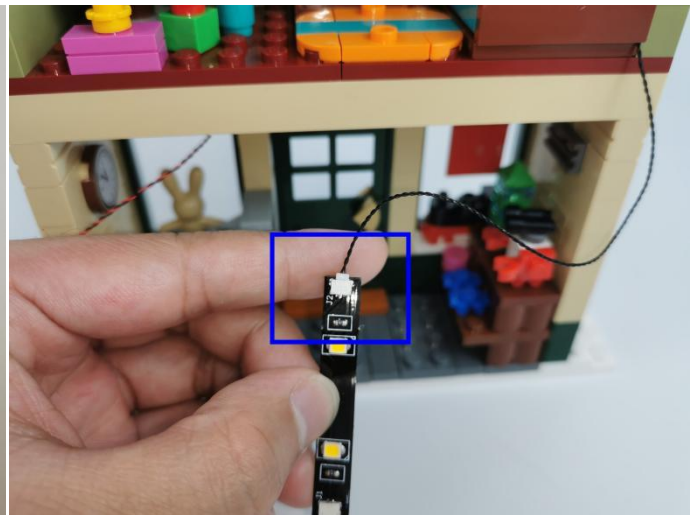
55



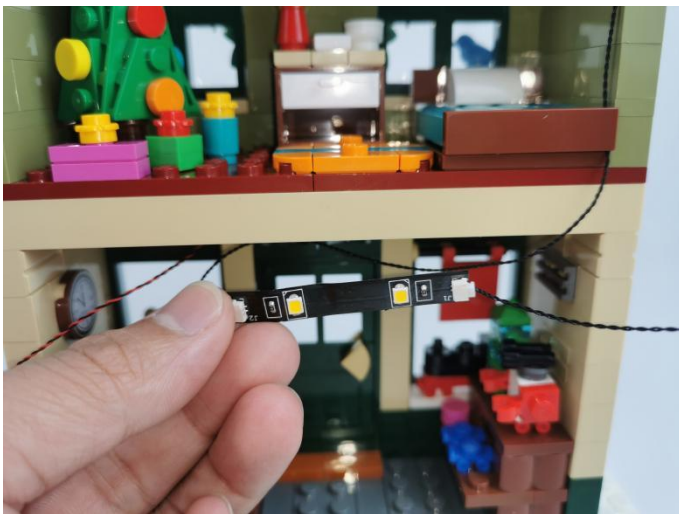
56



57



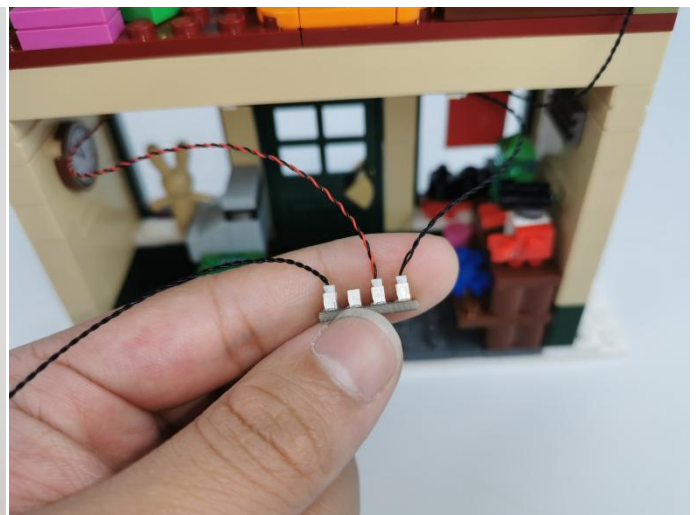
58



59



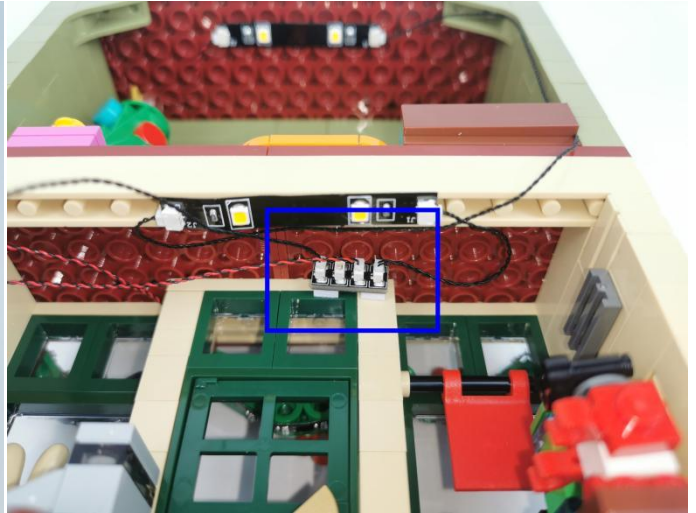
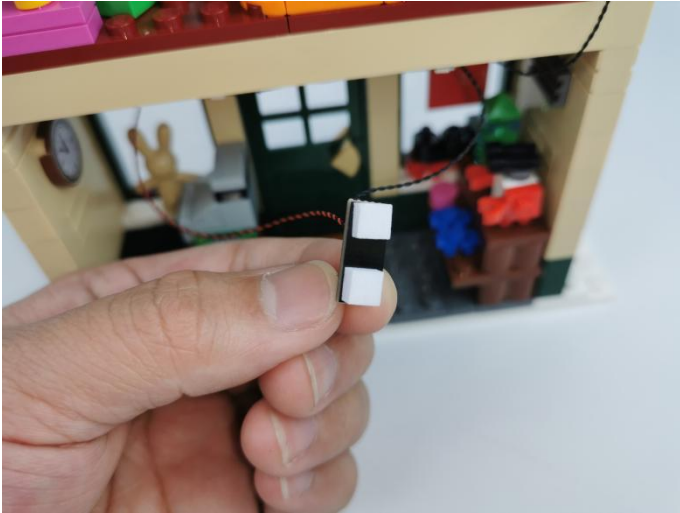
60



61



62



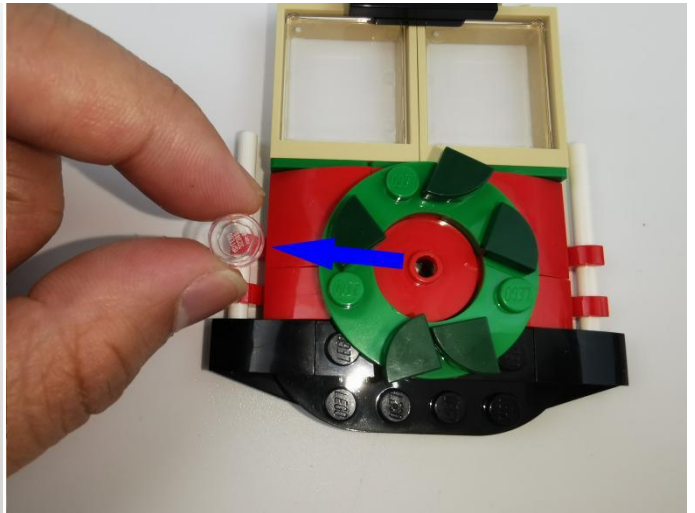
63



66



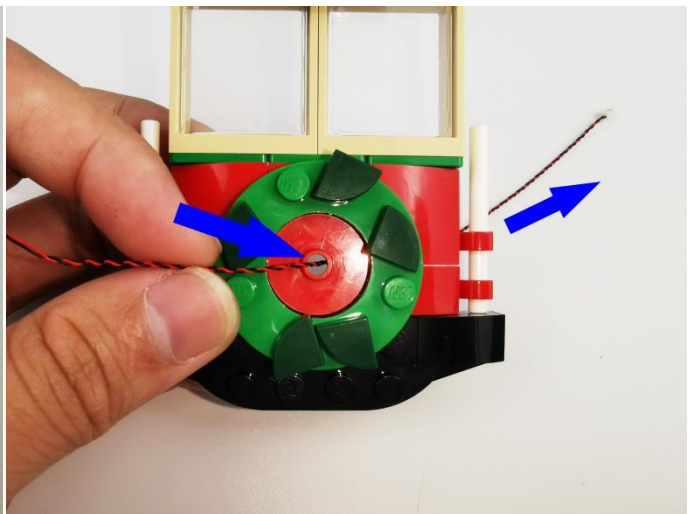
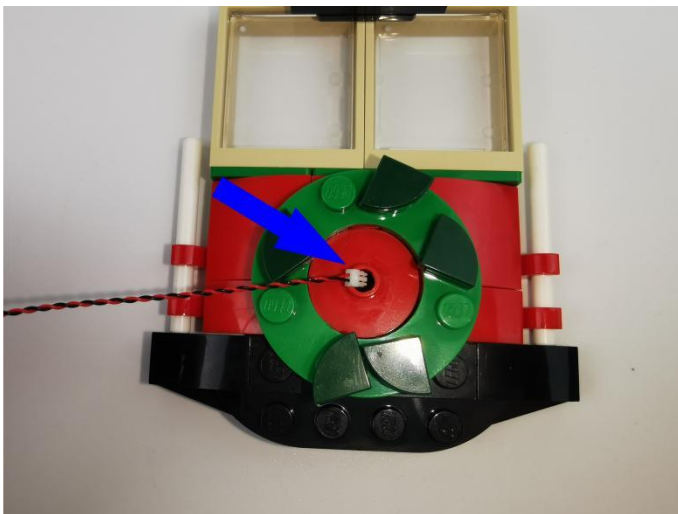
67



68



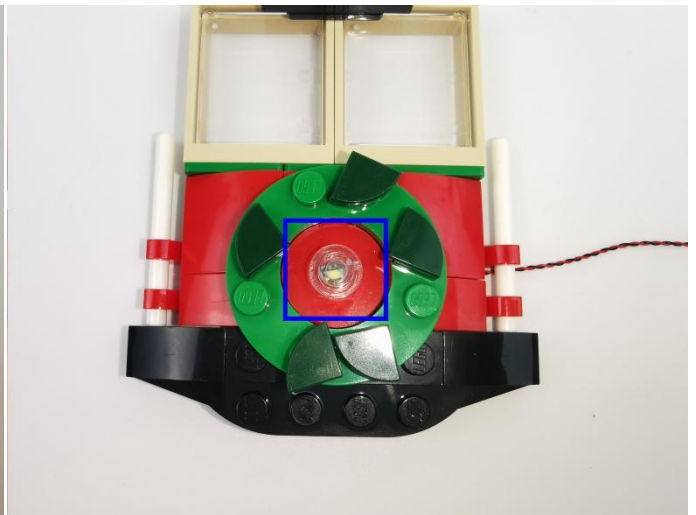
69



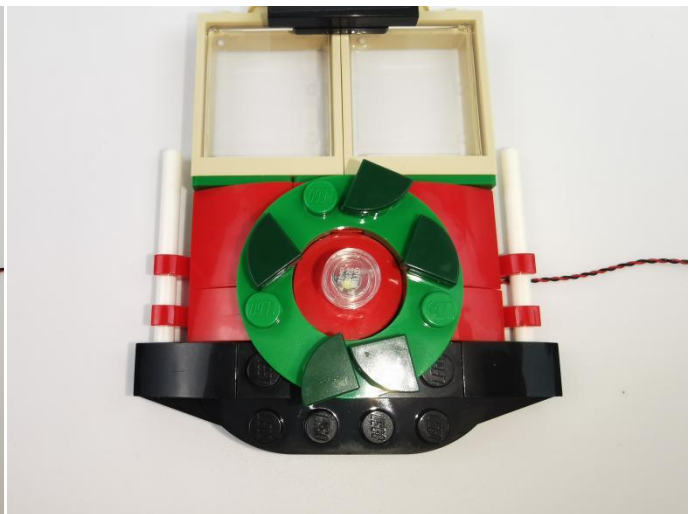
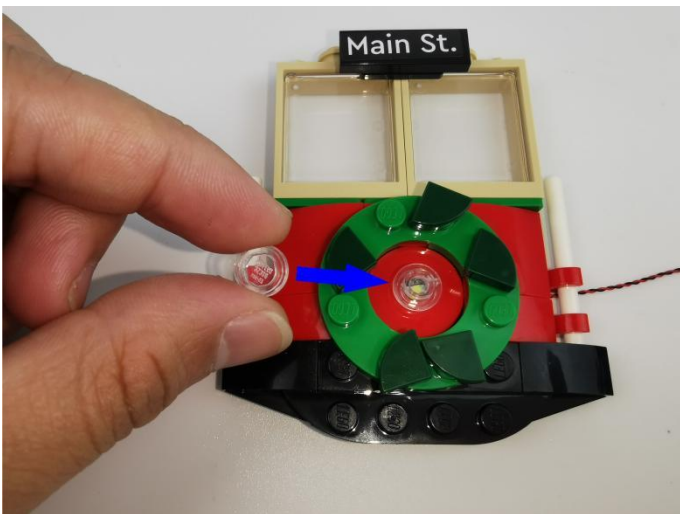
70



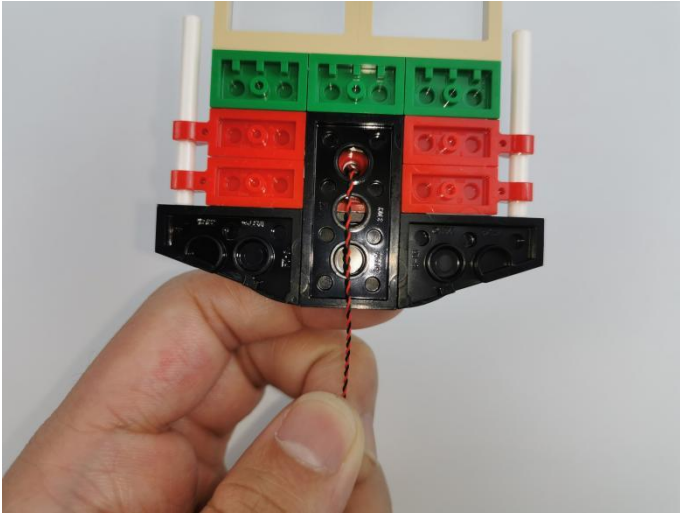
71



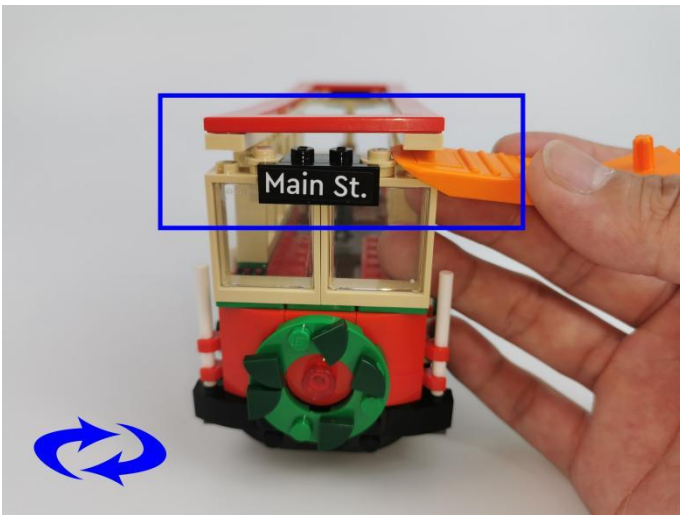
72



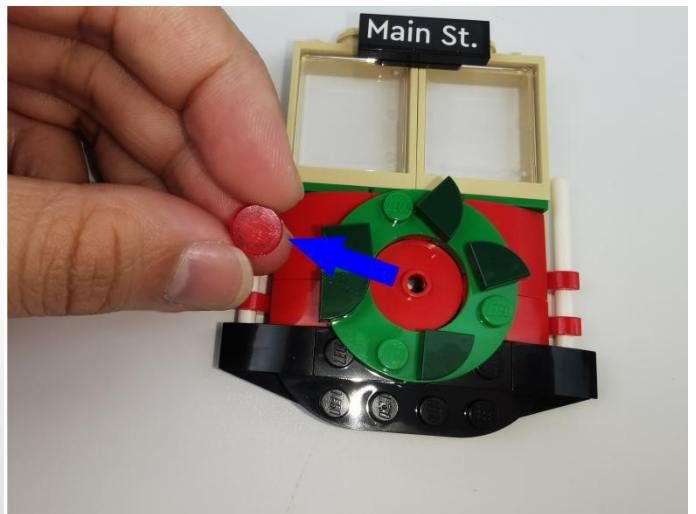
73



74



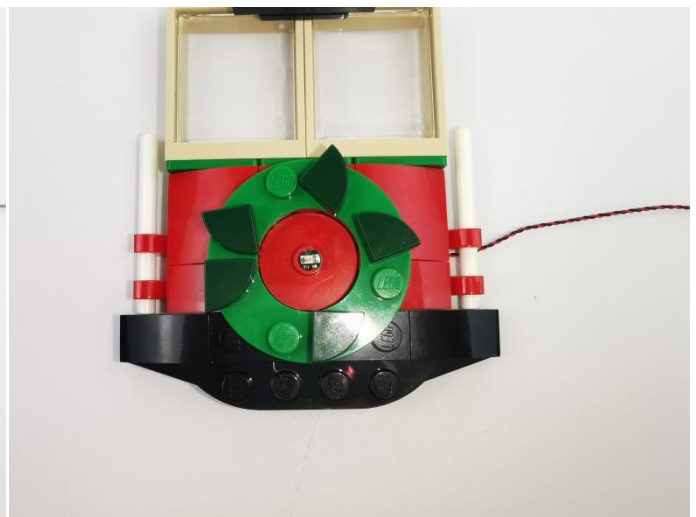
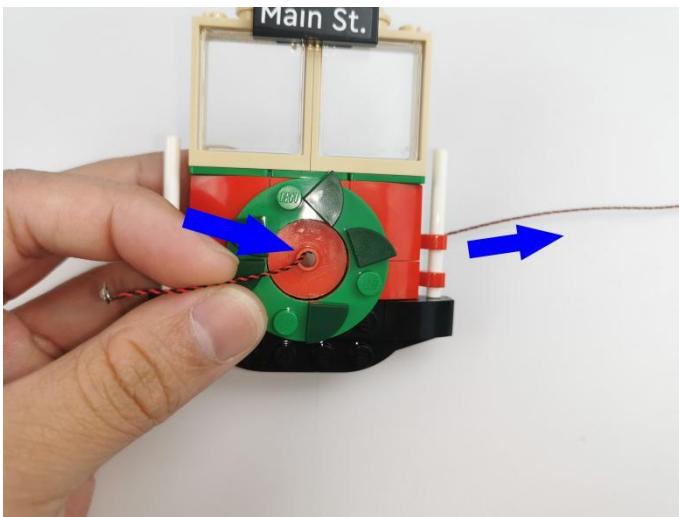
75



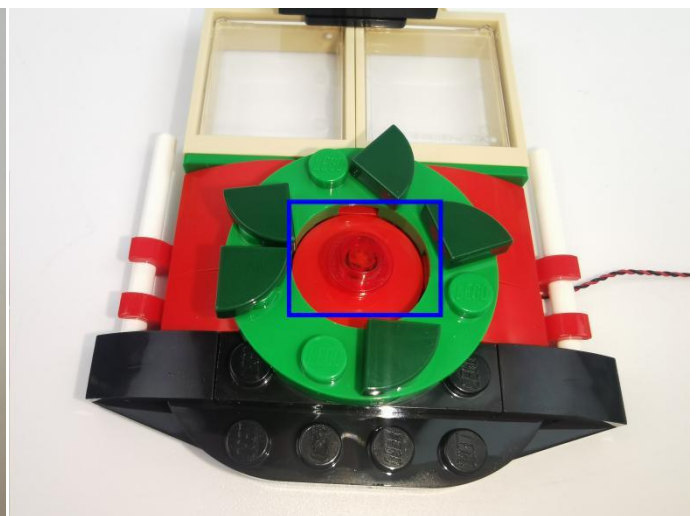
76



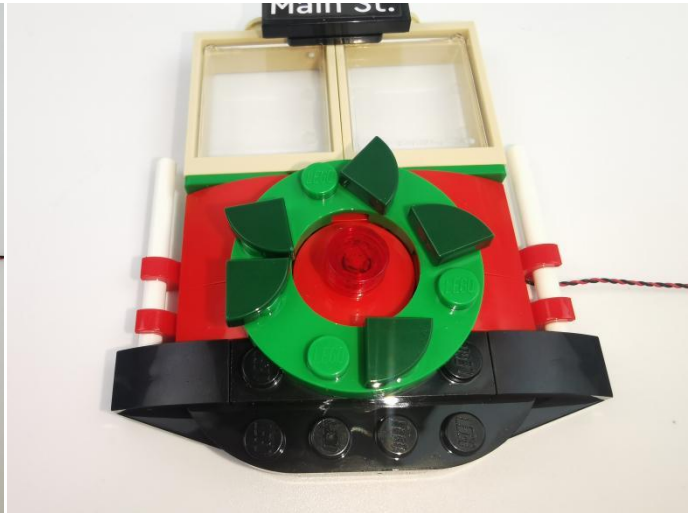
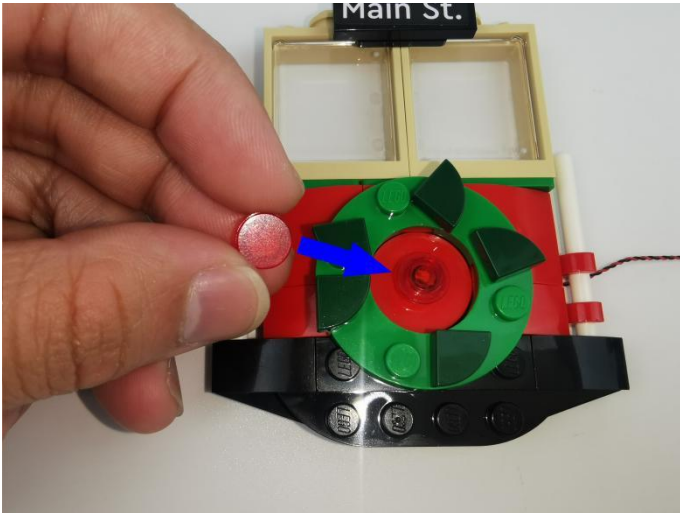
77



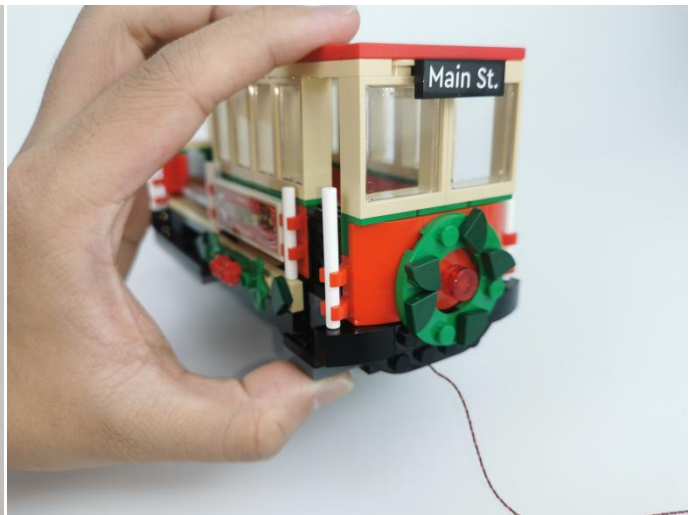
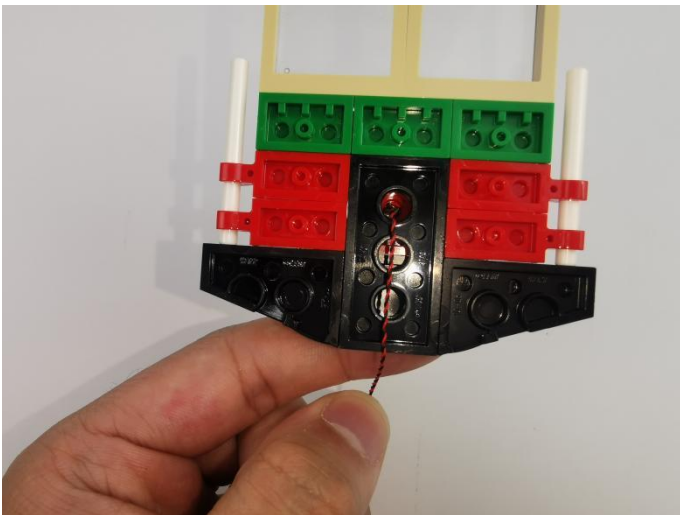
78



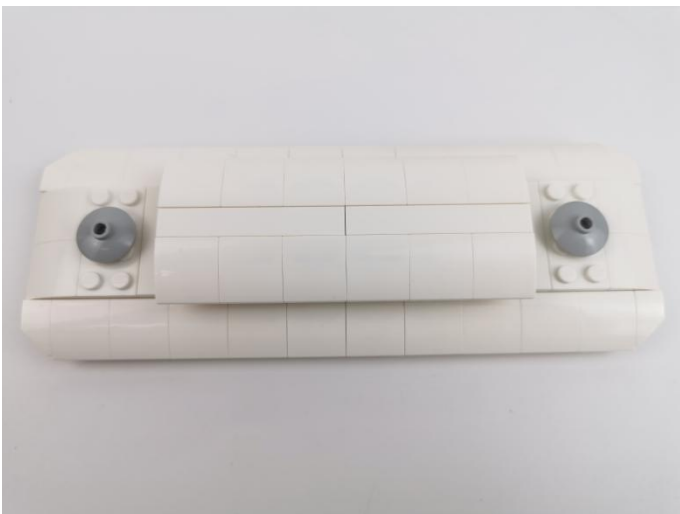
79



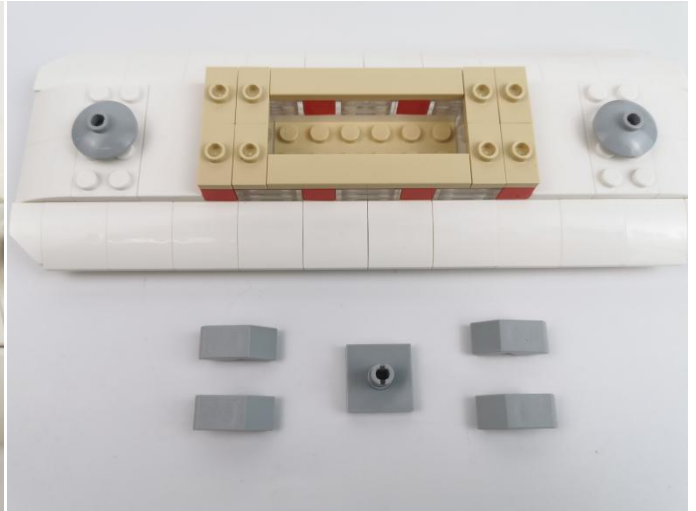
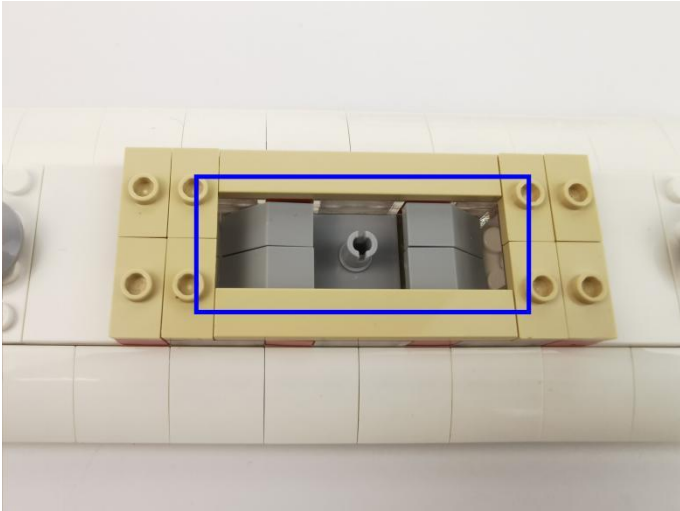
80



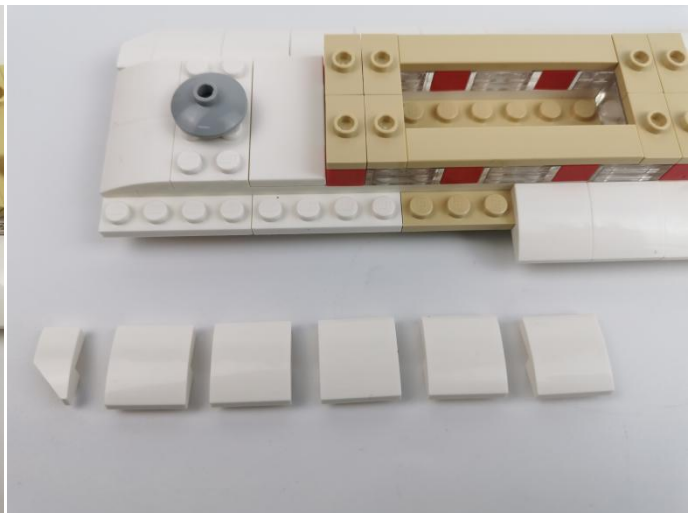
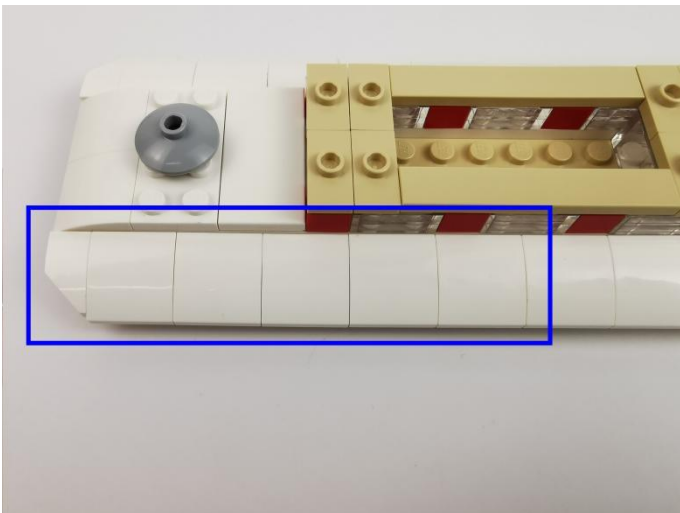
81



82



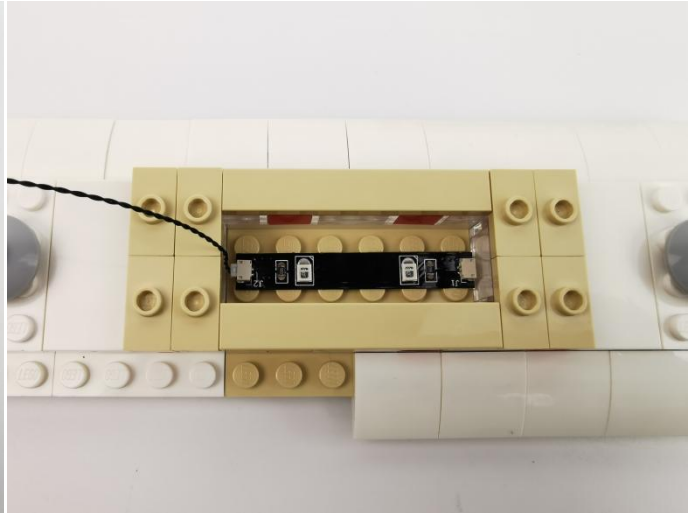
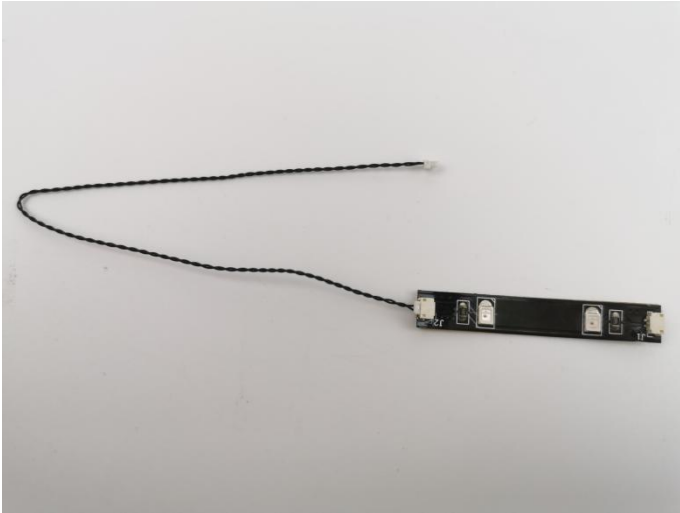
83



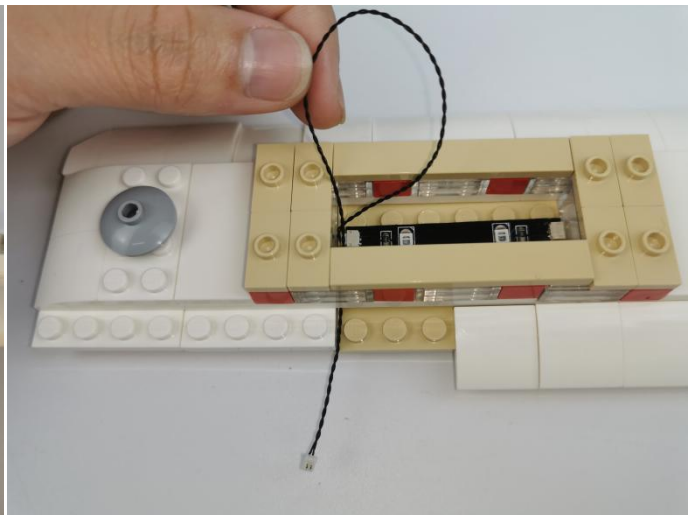
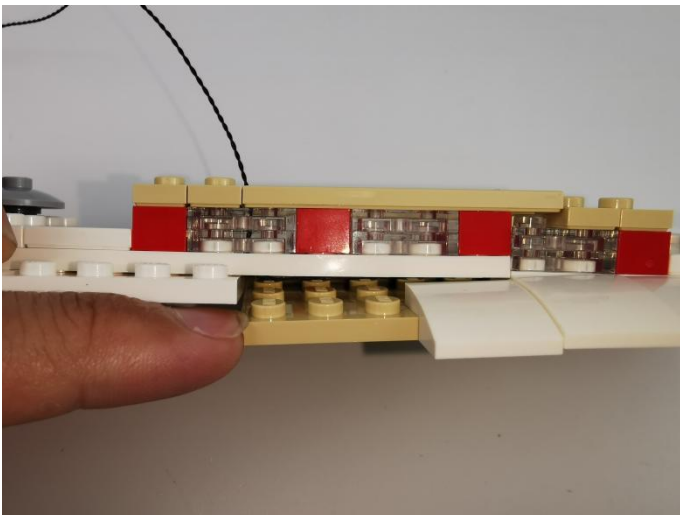
84



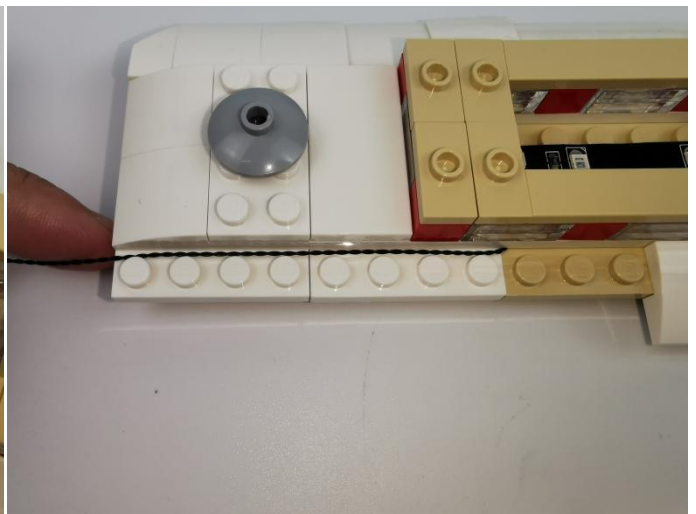
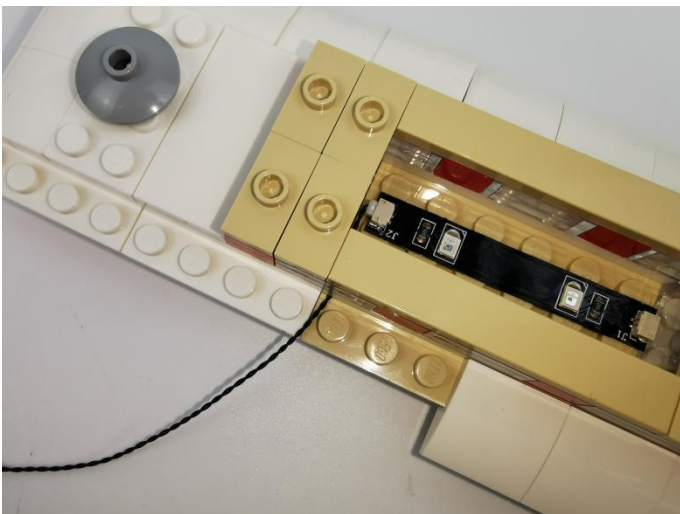
85



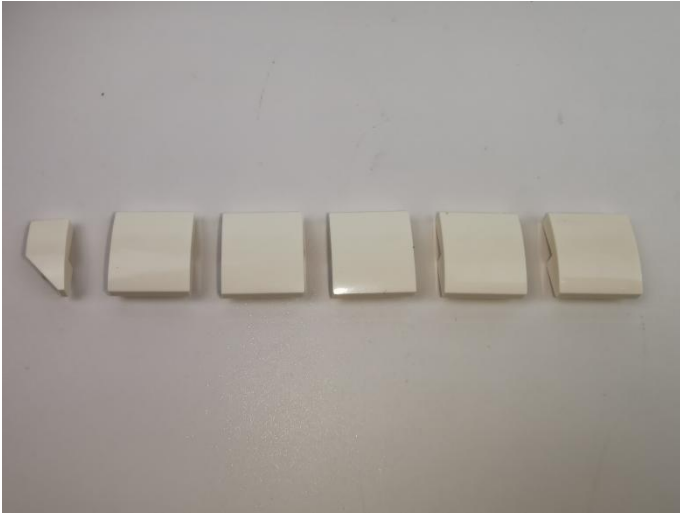
86



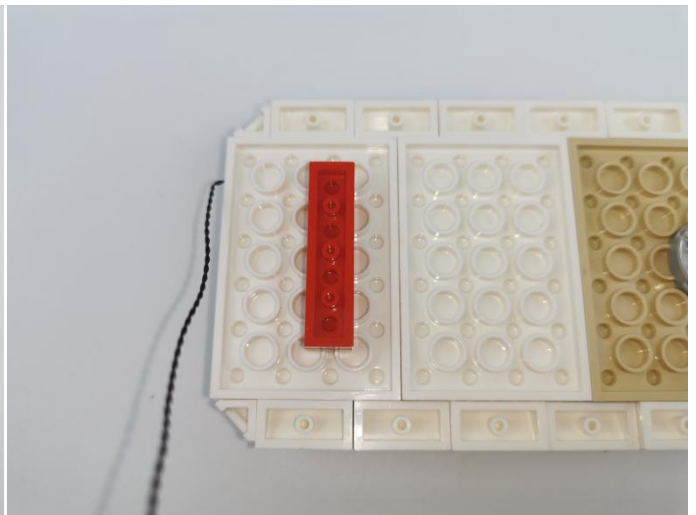
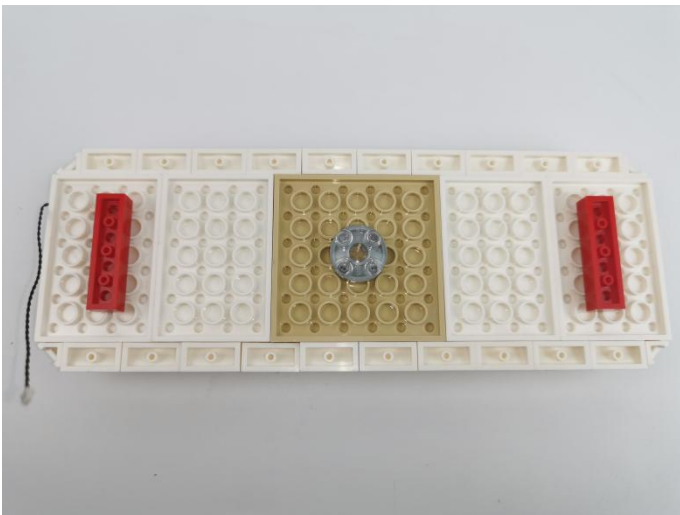
87



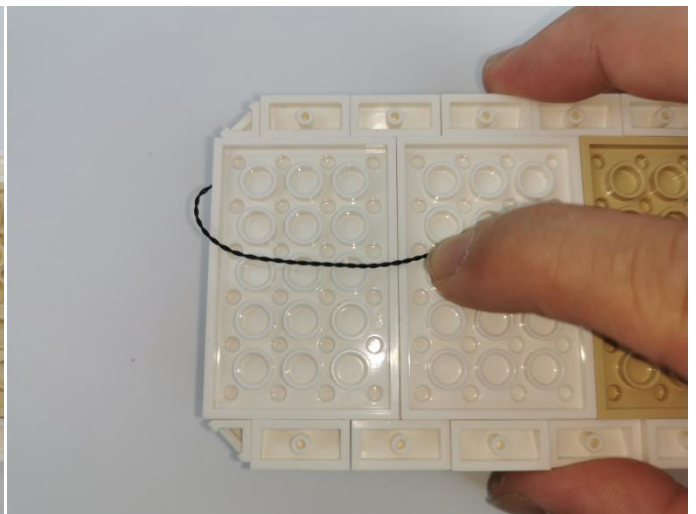
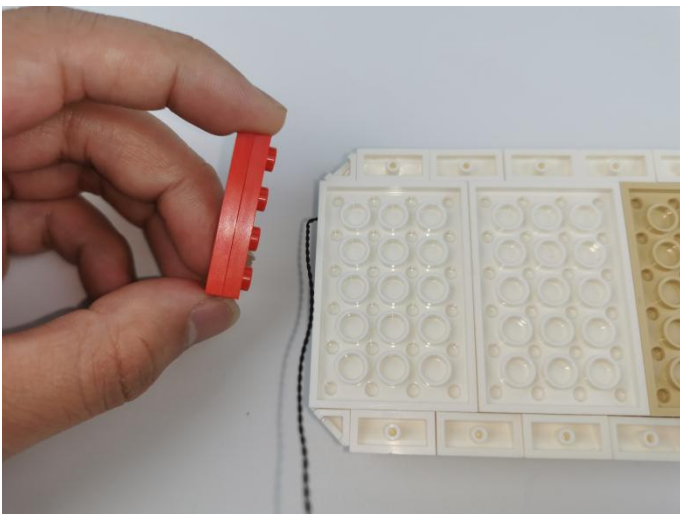
88



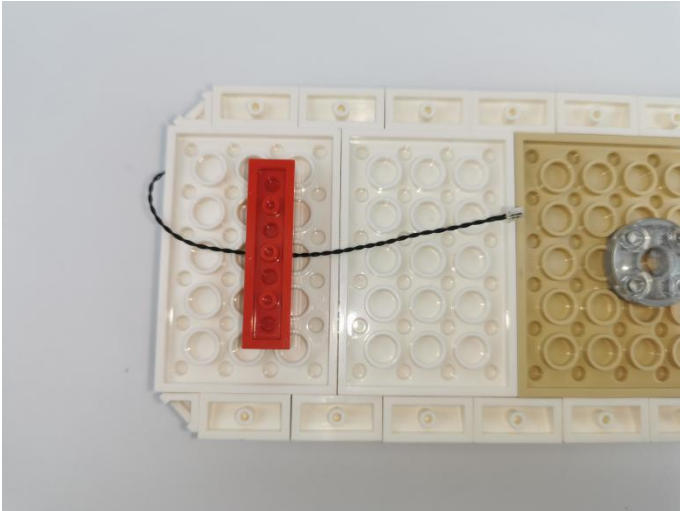
89



90



91



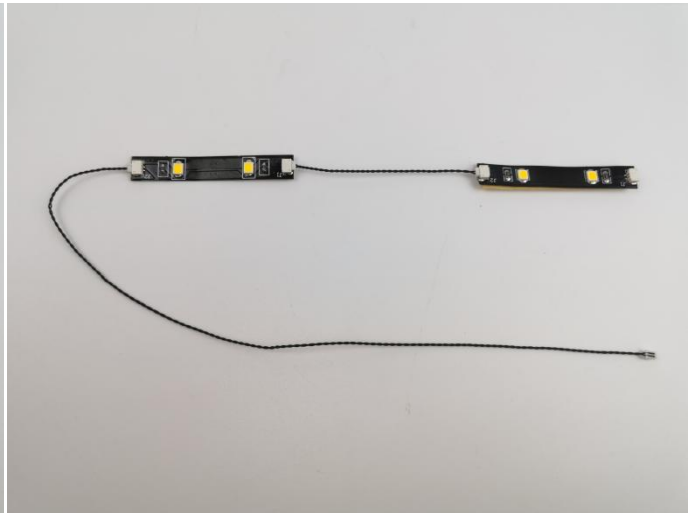
92



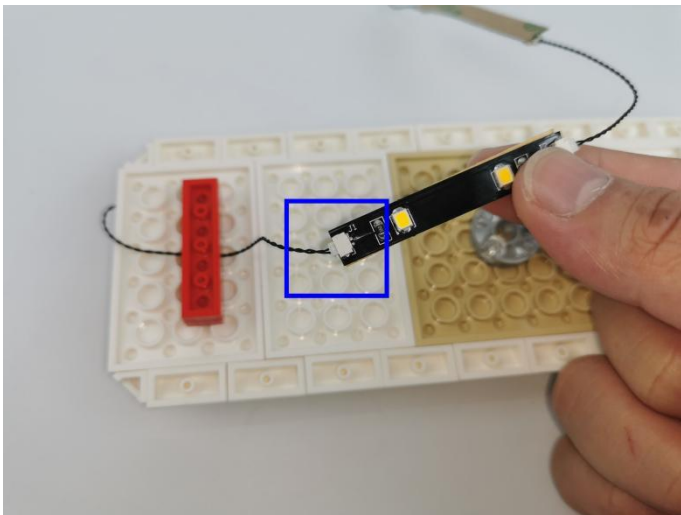
93



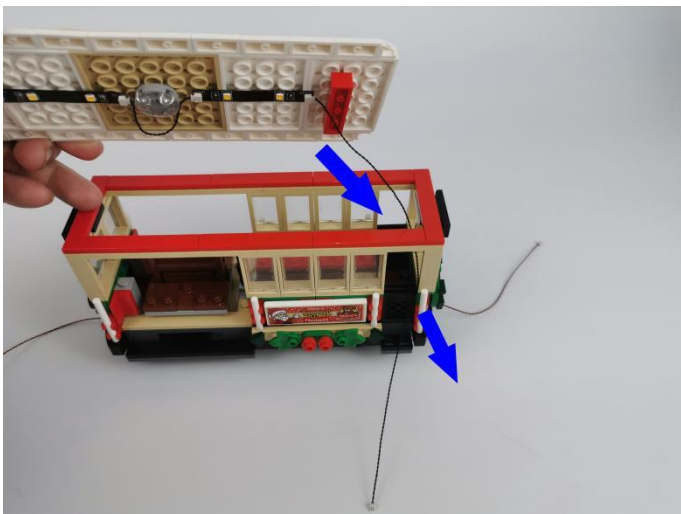
94



95



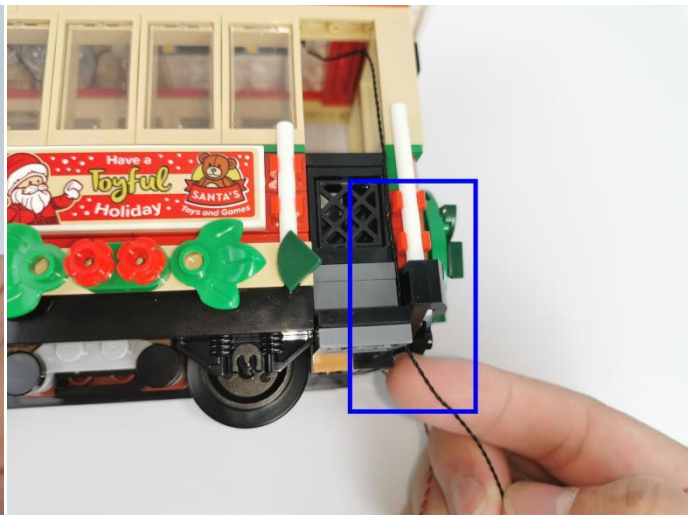
96



97



98



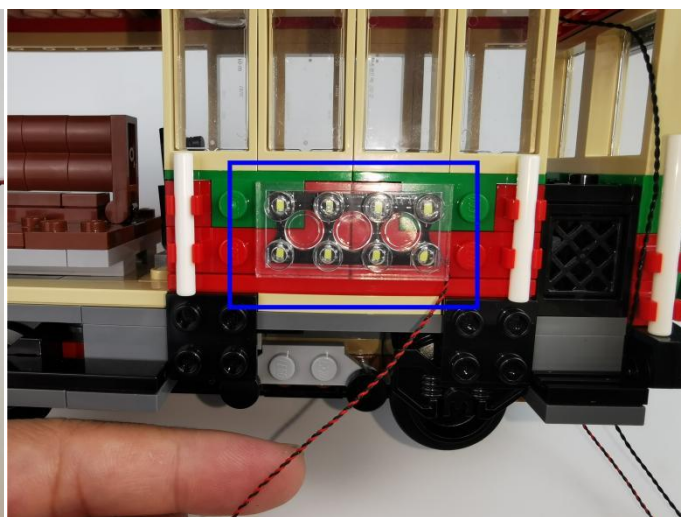
99



100



101



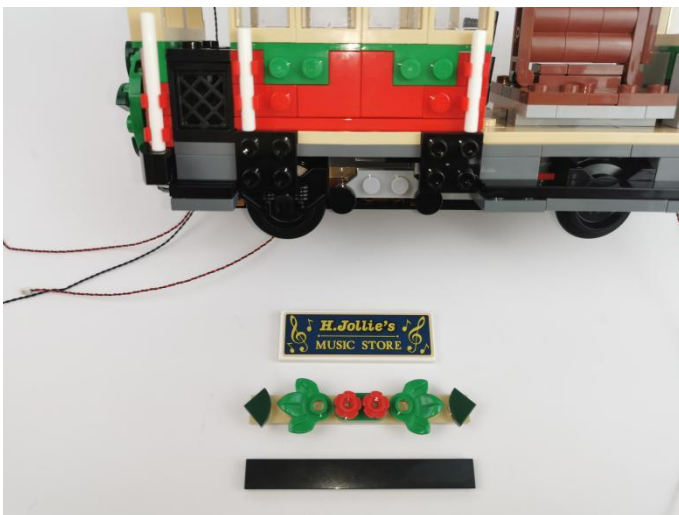
102



103



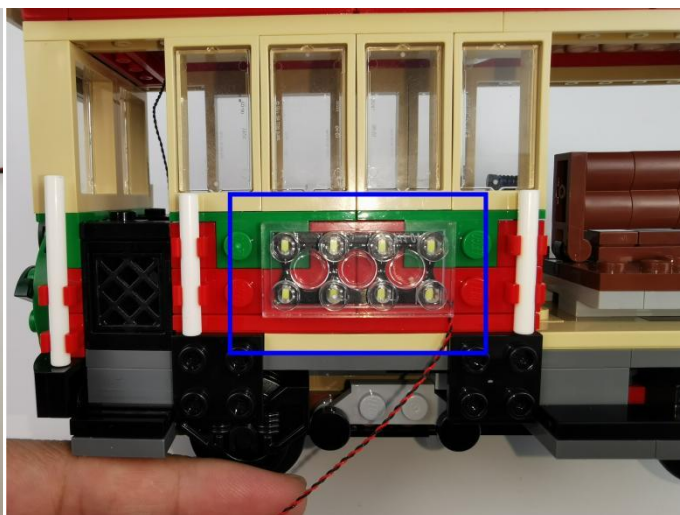
104



105



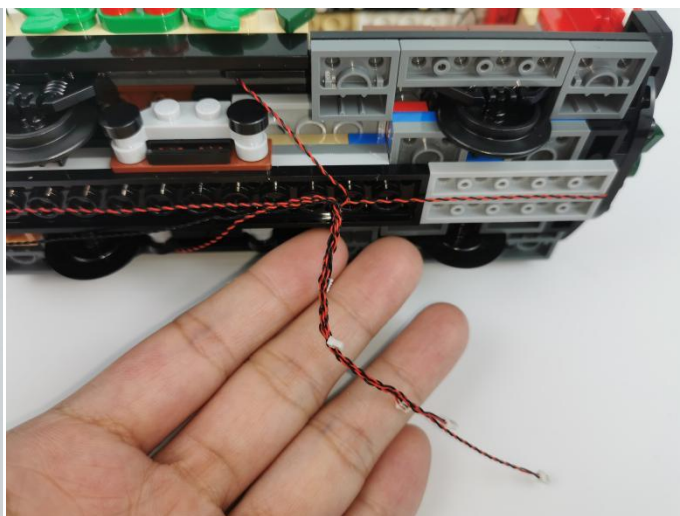
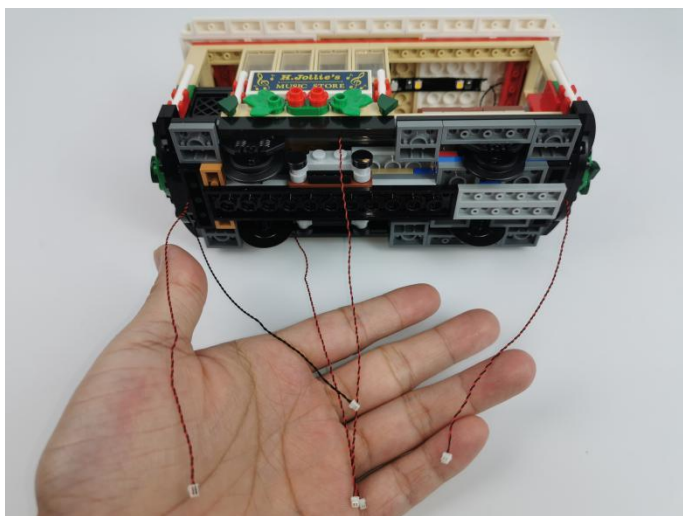
106



107



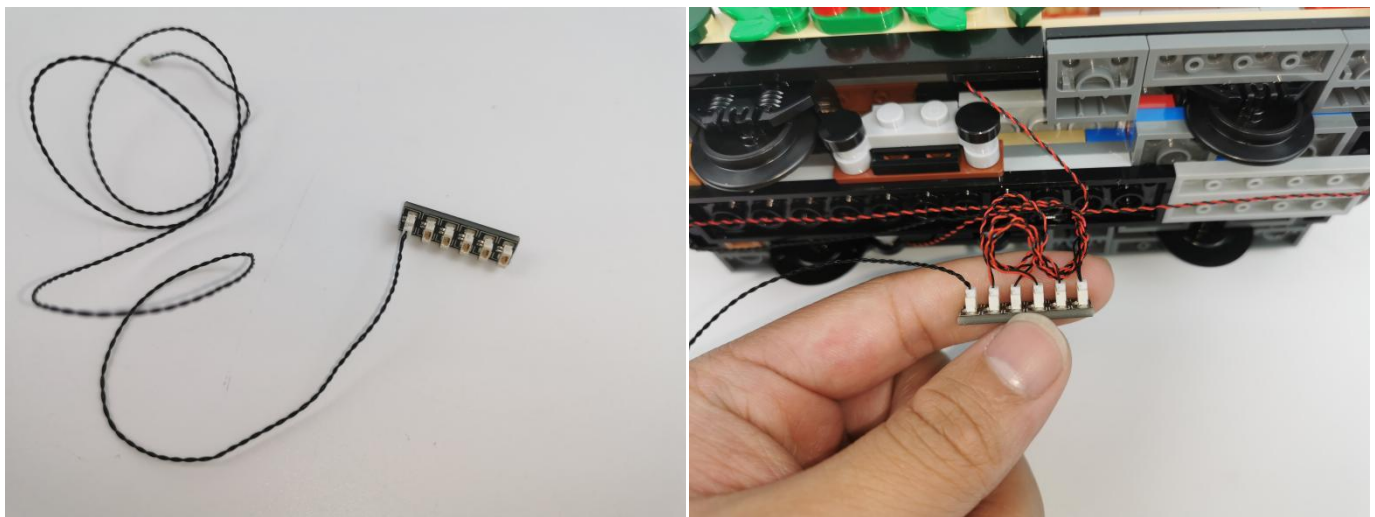
108



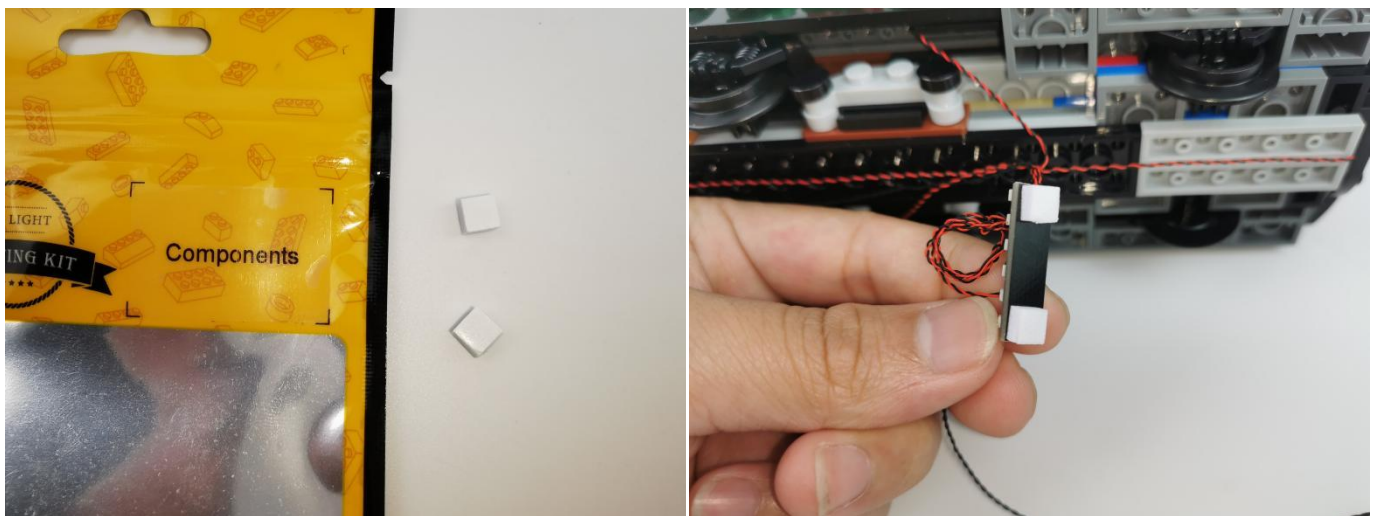
109



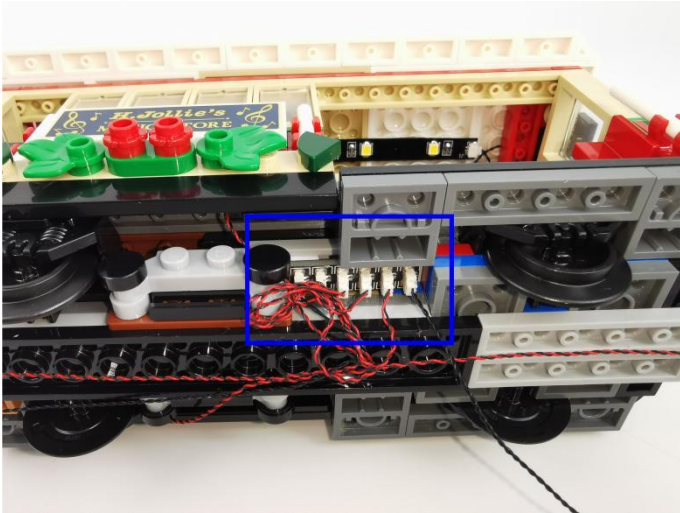
110



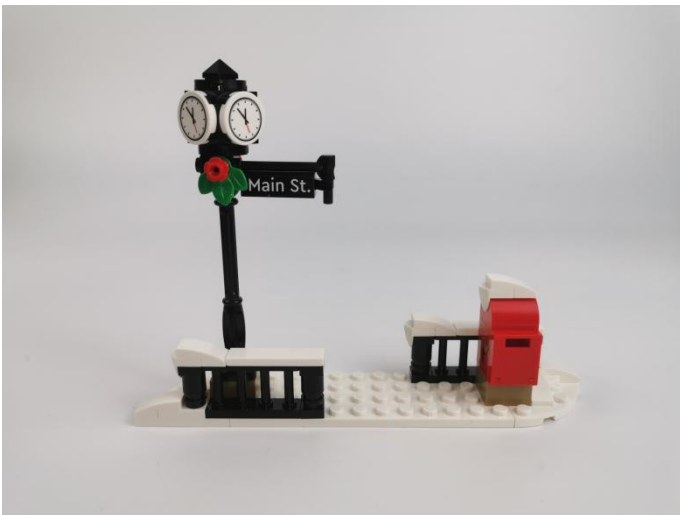
111



112



113



114



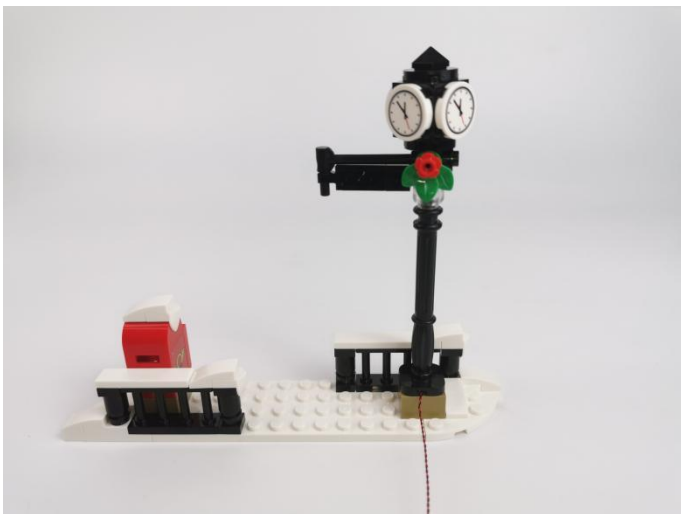
115



116



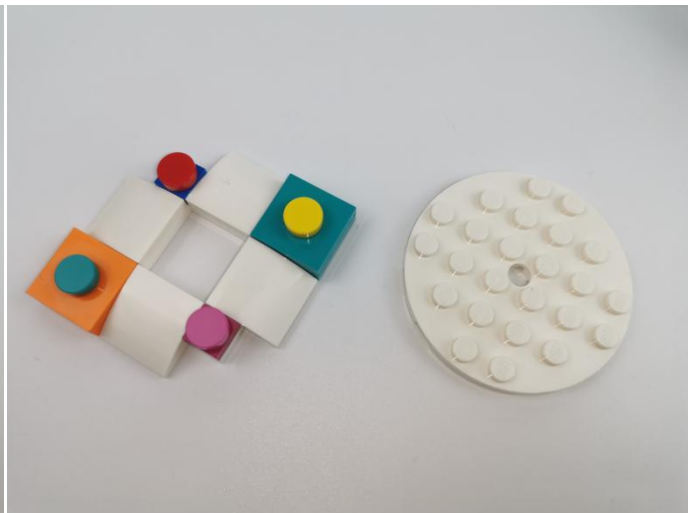
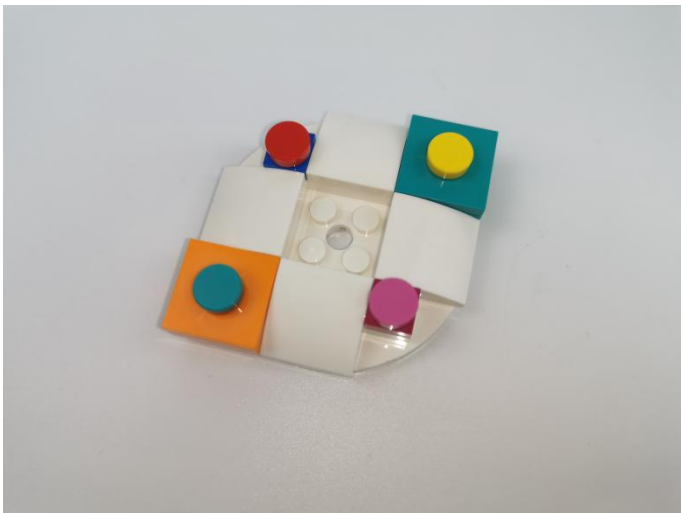
117



118



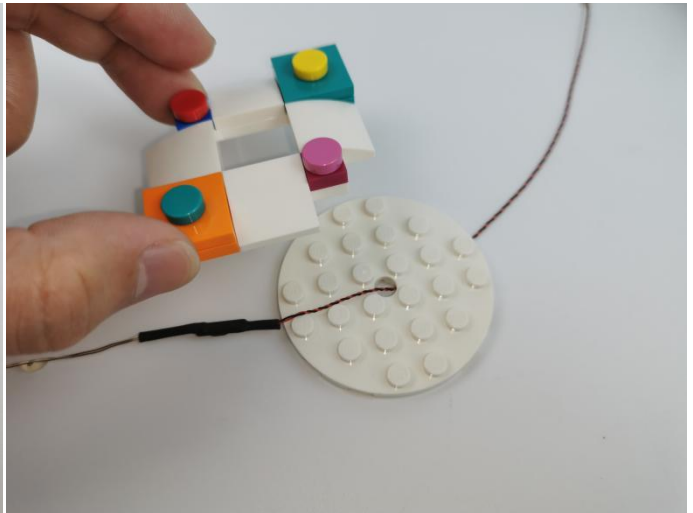
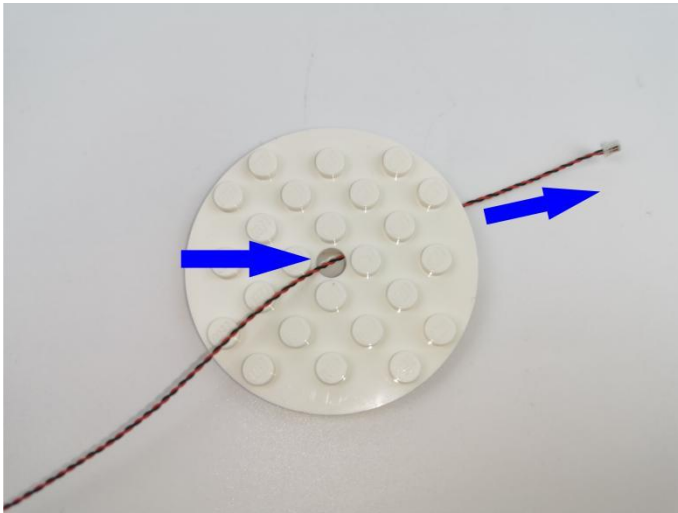
119



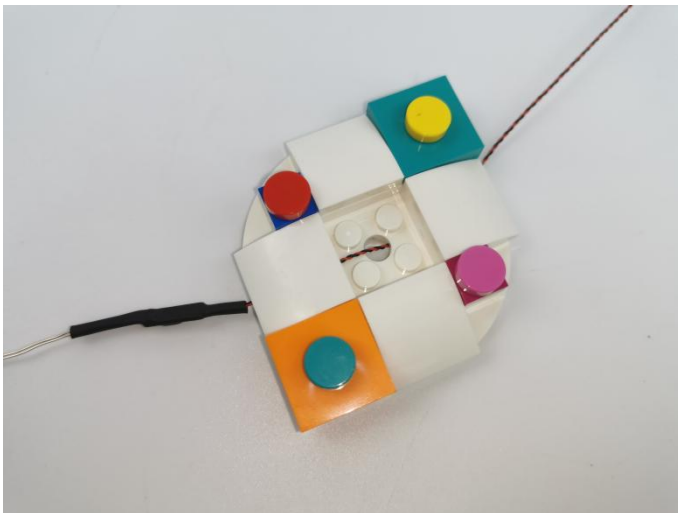
120



121



122



Wrap the lights around the Christmas tree.



123



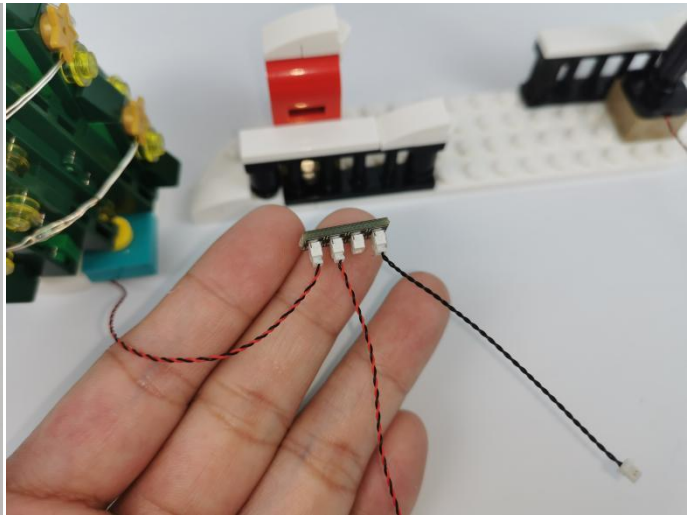
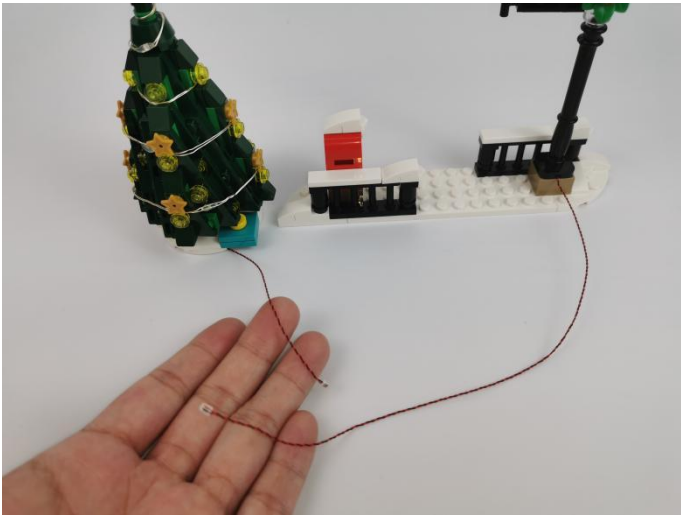
124



125



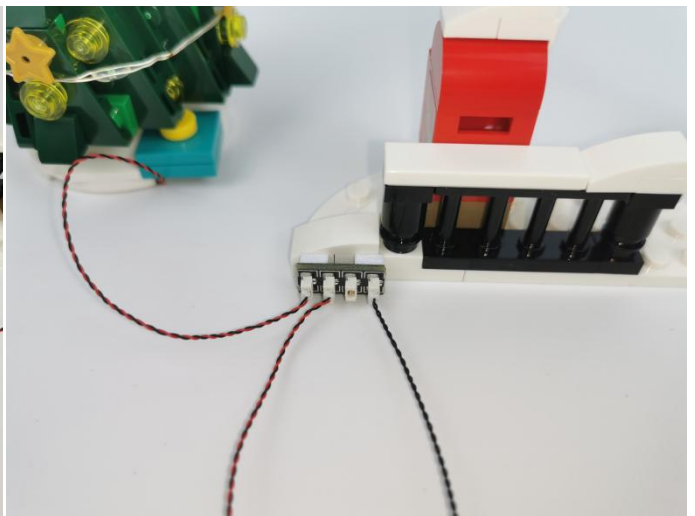
126



127



128



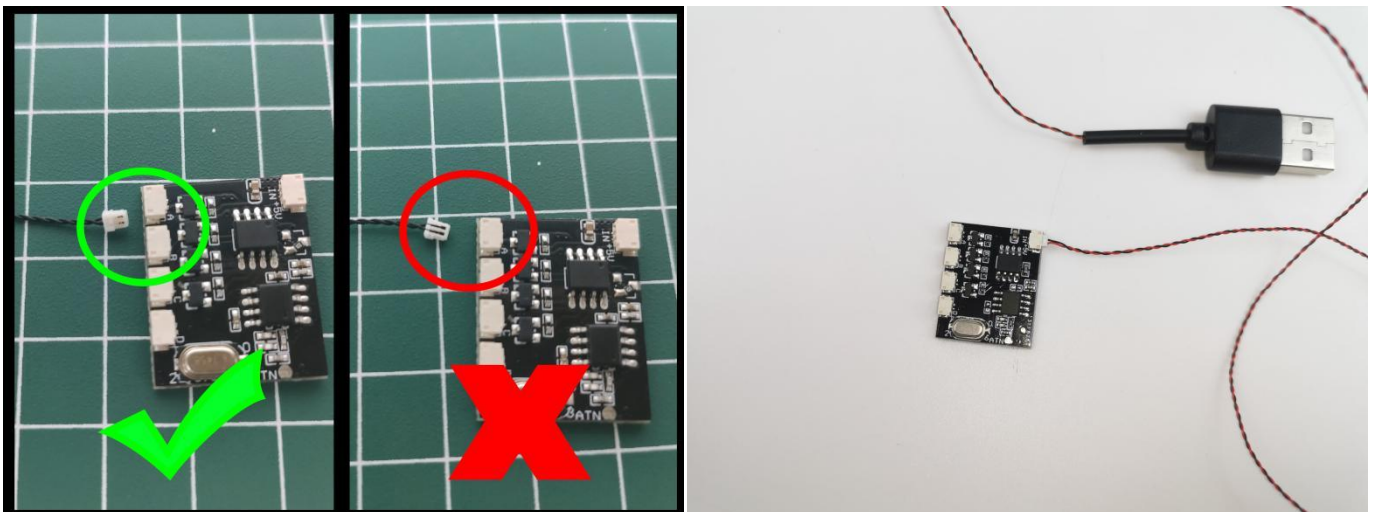
129



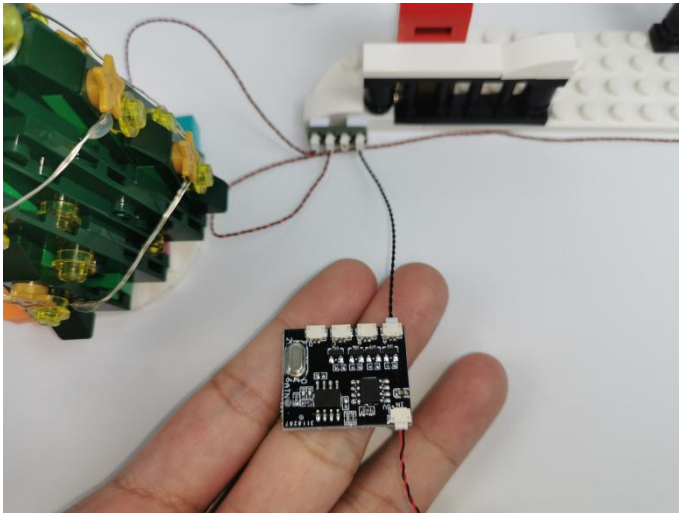
130



131



132



Remote control function description



ON: All branches are opened
OFF: all branches are closed

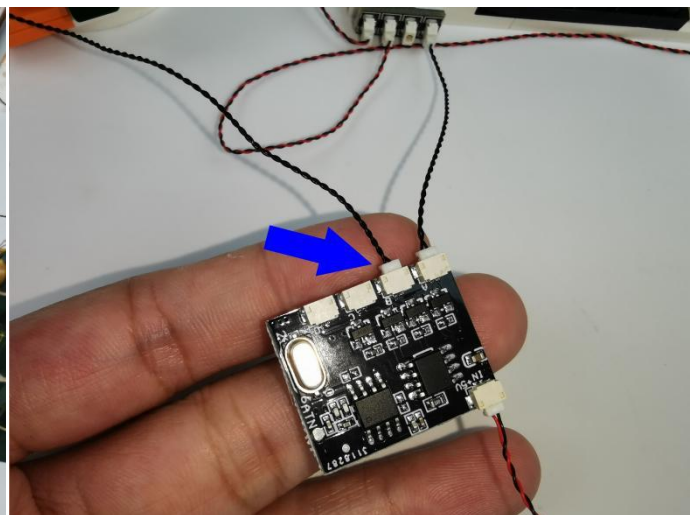
A: open/close A road
B: open/close B road
C: open/close C road
D: open/close D road

FS: Turn on blinking for the last open channel
BLN: Start breathing for the last opened path

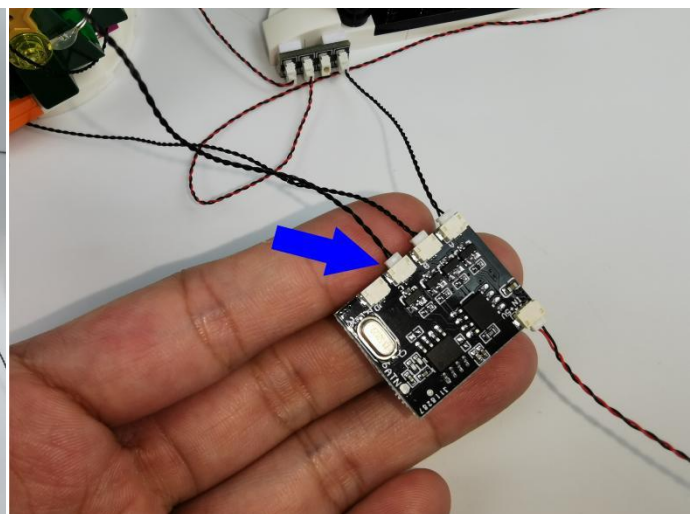
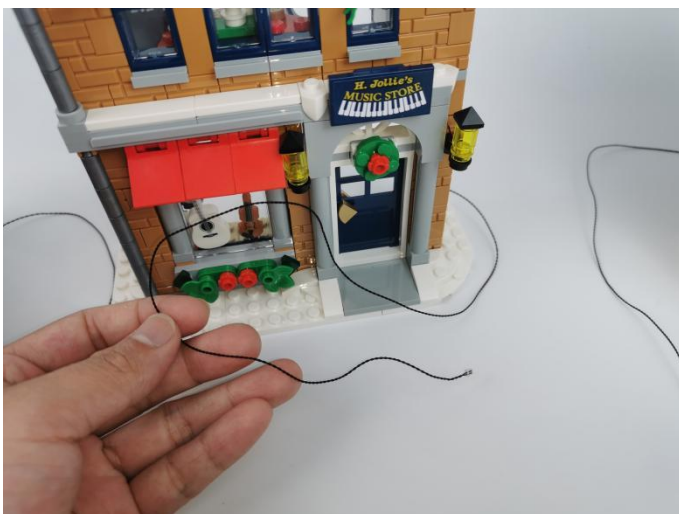
↑: Increase blinking/breathing rate
↓: Increase blinking/breathing rate

Brightness+: Increase brightness
Brightness -: Reduce brightness

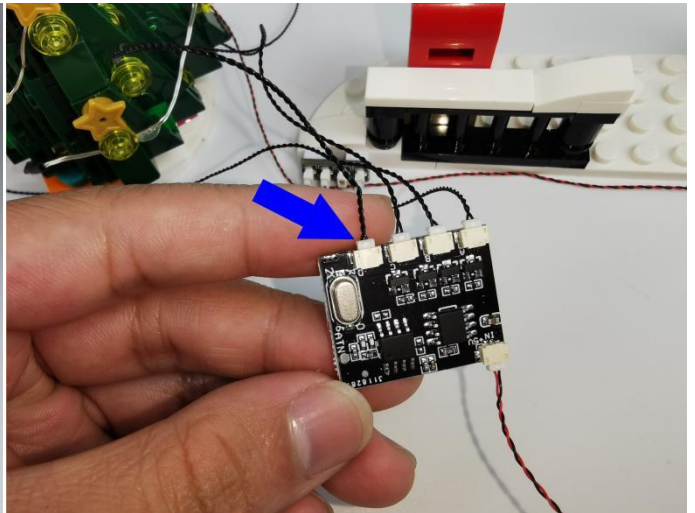
134



135



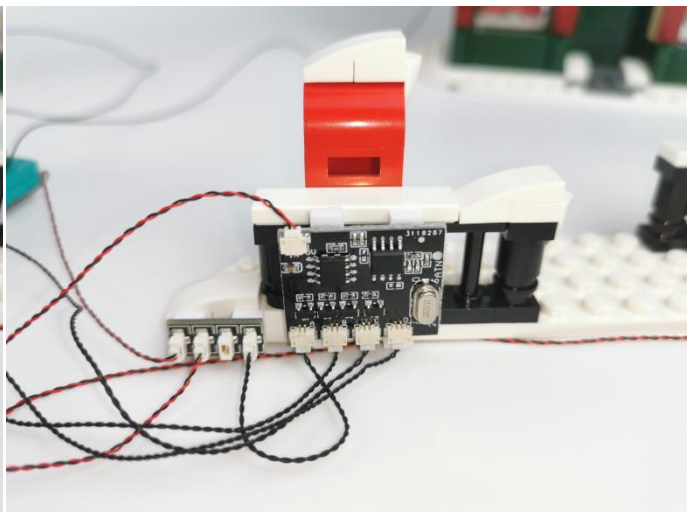
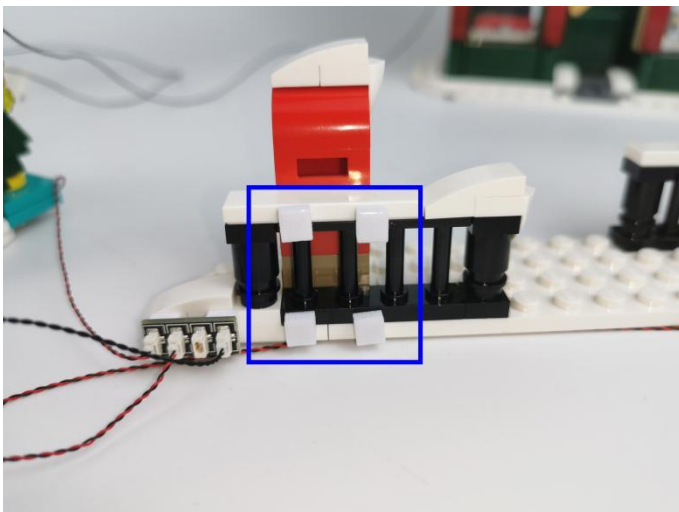
136



137



138






Good job, you've done all the installation steps, power it up and enjoy your work.



Remote control function description



- ON: All branches are opened
- OFF: all branches are closed
- A: open/close A road
- B: open/close B road
- C: open/close C road
- D: open/close D road
- FS: Turn on blinking for the last open channel
- BLN: Start breathing for the last opened path
- ↑: Increase blinking/breathing rate
- ↓: Increase blinking/breathing rate
- Brightness+: Increase brightness
- Brightness -: Reduce brightness

The battery box can also power the set. If it is necessary to change the power supply , prepare three AAA batteries, install them in the battery box, turn on the switch on the battery box, remove the plug of the USB Power Cable from the socket of the expansion board, plug the plug of the battery box to the same socket in the expansion board to power the suit as well.

THANKS