

21357 Disney Pixar Luxo Jr. GC1077

- Installation requires a lot of patience and great observation that your LEGO bricks will come alive when you get this finished. The bricks with lighting as below, so make sure you're ready and let's get started.



Strategies for the Installation

This instruction divides three sections to complete the installation of the lighting set.

Section A: Check the type and quantity of components.

The quantity and type of components of each products are different and it needs to be carefully checked to make sure there do have enough material. The type of components is indicated by the label on the bag.

Section B: Test that each components is working properly.

Each components is made individually so it is necessary to test that each components is working properly to avoid the situation that the lighting does not work .

Section C: laying out components following the instruction.

Our material is very small but not fragile, just be reminded that don't to pull the wires too hard. For different people, there may be some installation steps that you can't understand. Please look at the previous and later installation step.

Section A: Check the type and quantity of components.

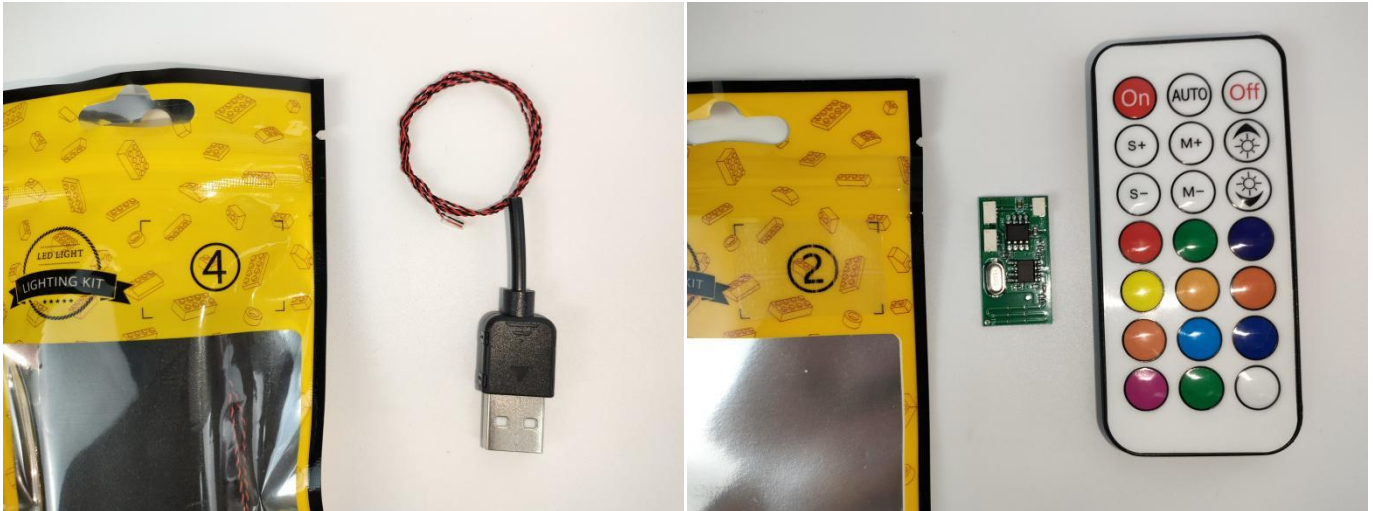
This set contains four bags labelled "1" "2" "3" "4", please make sure that the components in each bag are the same as shown in the pictures.



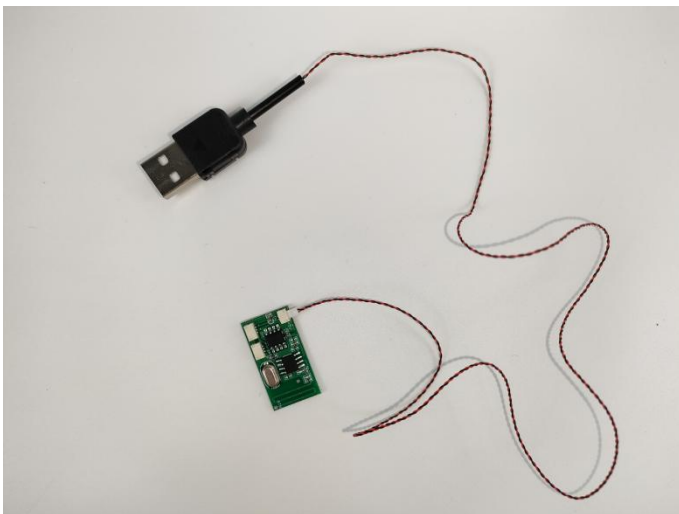
Please contact us immediately if there have any missing components.

Section B: Test that each components is working properly.

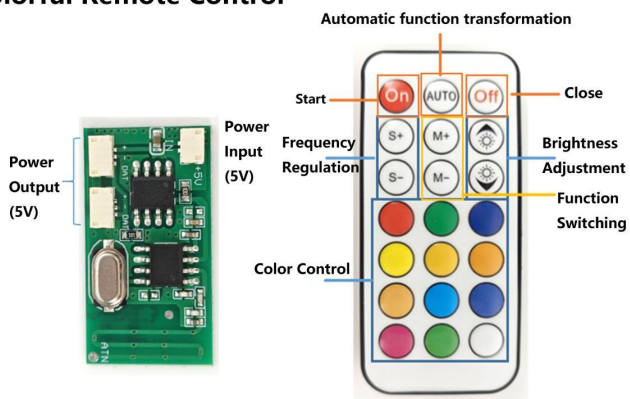
Take out the USB power cable, color remote control module, and remote control from "No. 4 bag" and " No. 2 bag".



The connection method between the usb power cable and the colorful remote control module is as follows:



Colorful Remote Control



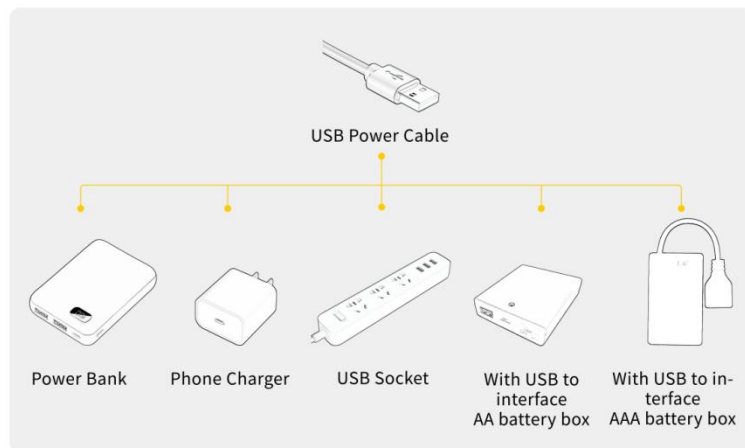
Colorful remote control battery

The colorful remote control does not include batteries. Please purchase CR2025 or CR2032 button batteries from a nearby store and install them in the colorful remote control.



The usb power cord can be powered by phone chargers, power banks,etc.

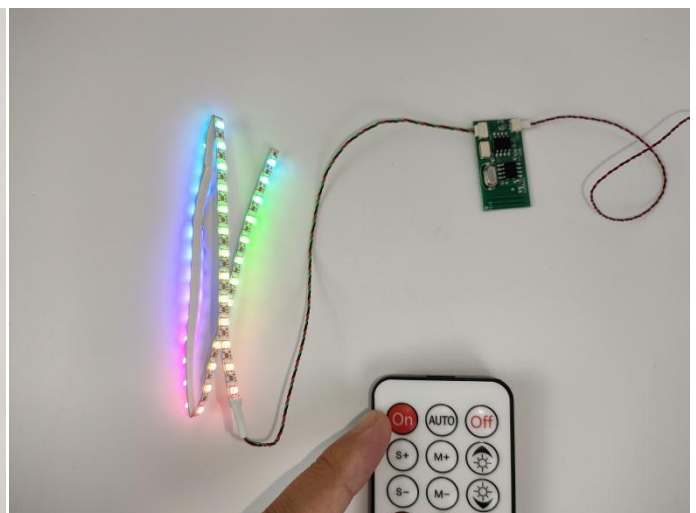
USB Connectors to Connect Devices



This instruction will use the power bank as power supply . The test structure is shown as follow. All lamp in this set will be tested by this structure.



When we test the "①" lighting fixture, we remove one of them and connect it to the module. Turn on the portable power bank and activate the remote control, and the light strip will light up normally, as shown in the following figure.



Test each lamp according to this method. It should be noted that after the test, the lamp must be returned to the corresponding bag to avoid confusion of types.



Section C: laying out components following the instruction.

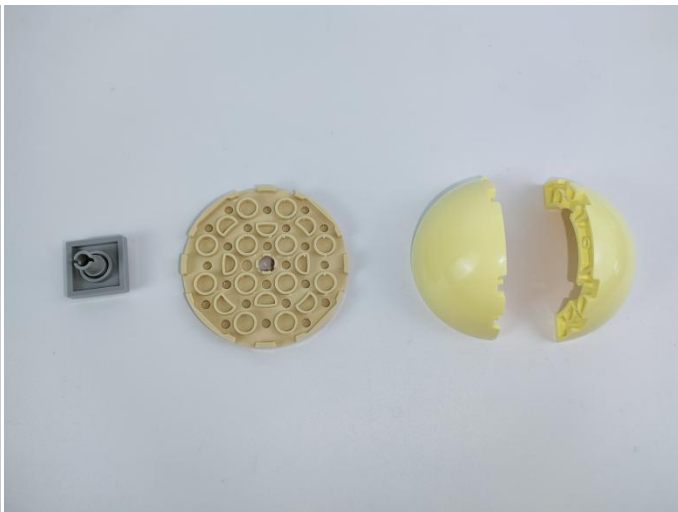
1



2



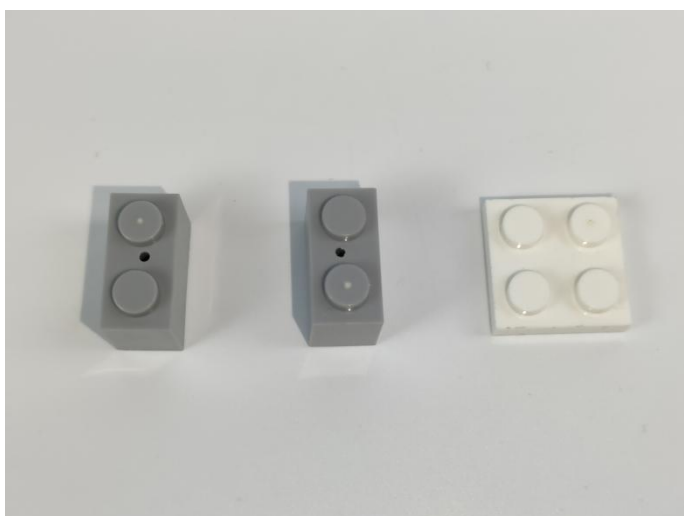
3



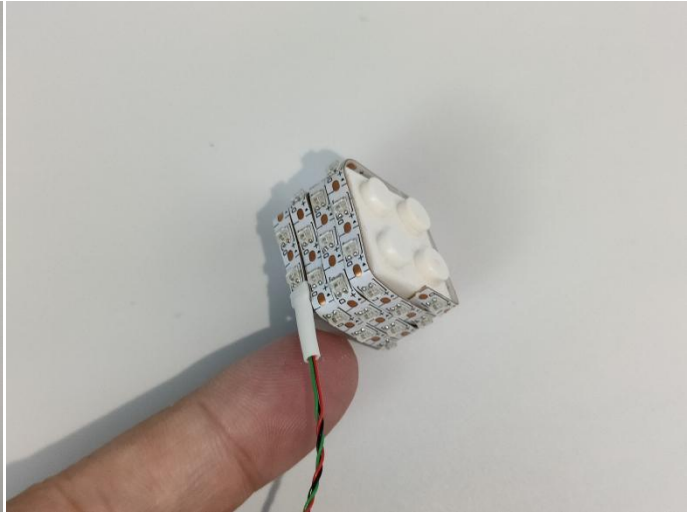
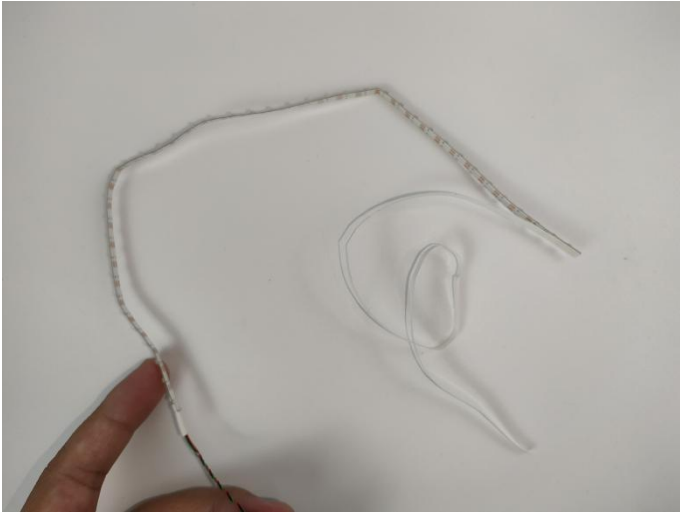
4



5



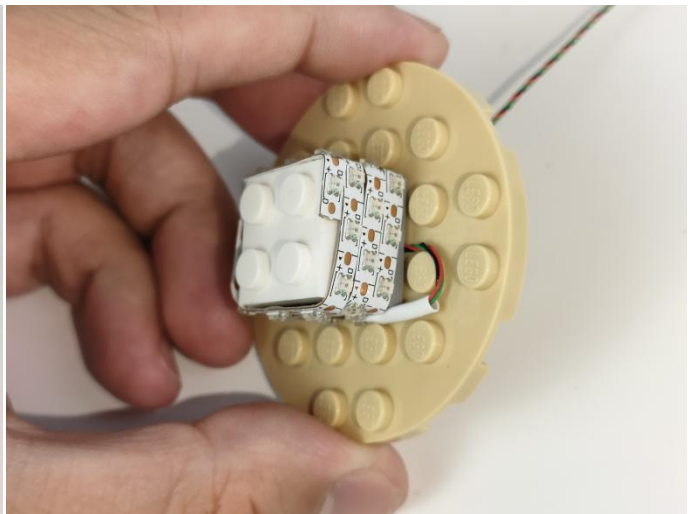
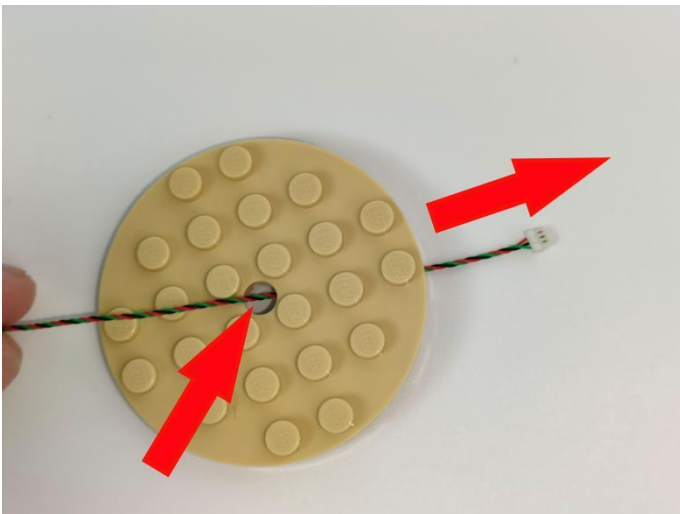
6



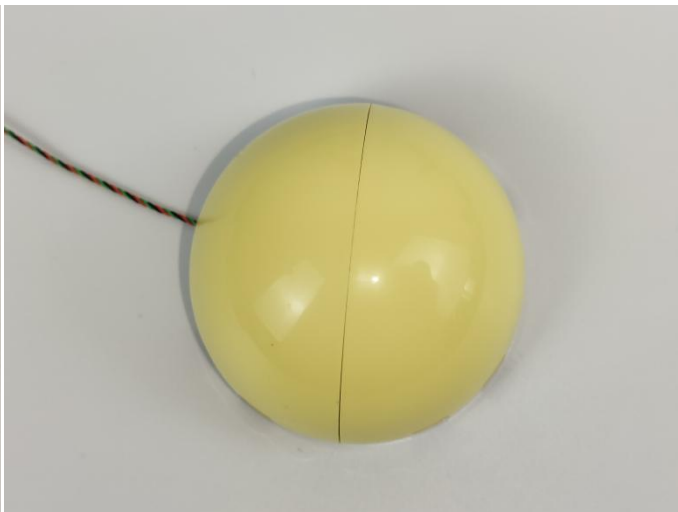
7



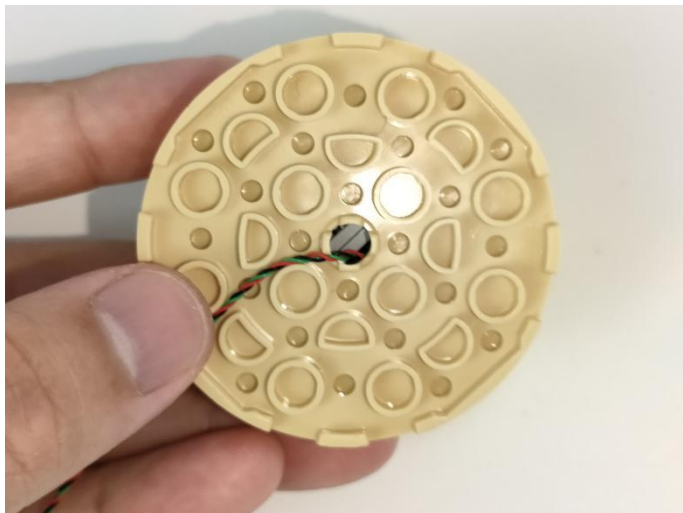
8



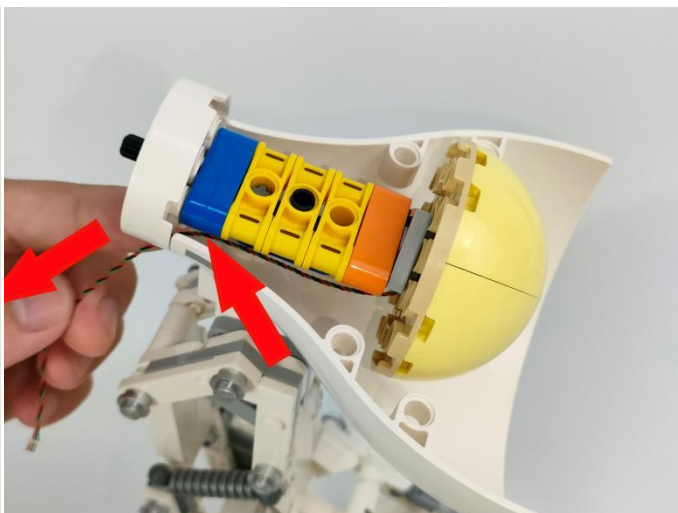
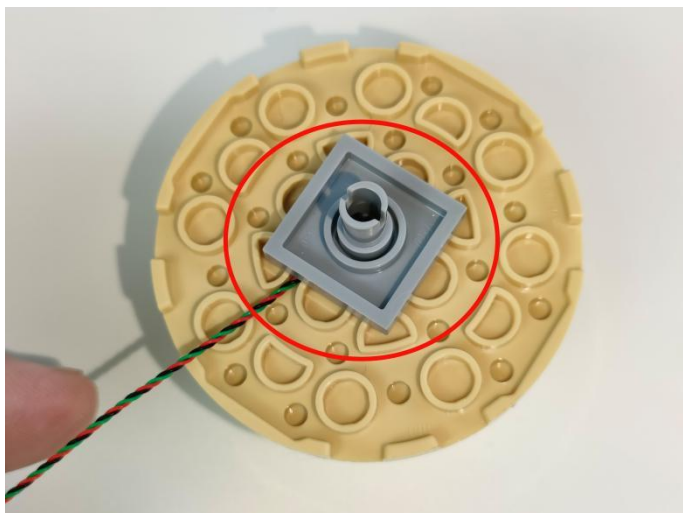
9



10



11



12



13

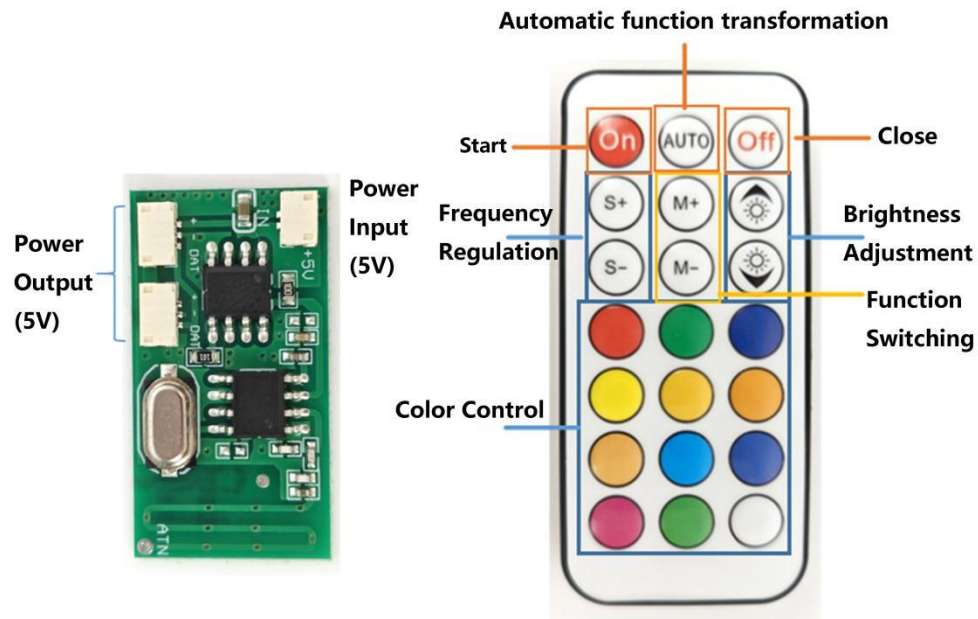


Colorful remote control battery

**The colorful remote control does not include batteries.
Please purchase CR2025 or CR2032 button batteries from
a nearby store and install them in the colorful remote control.**



Colorful Remote Control



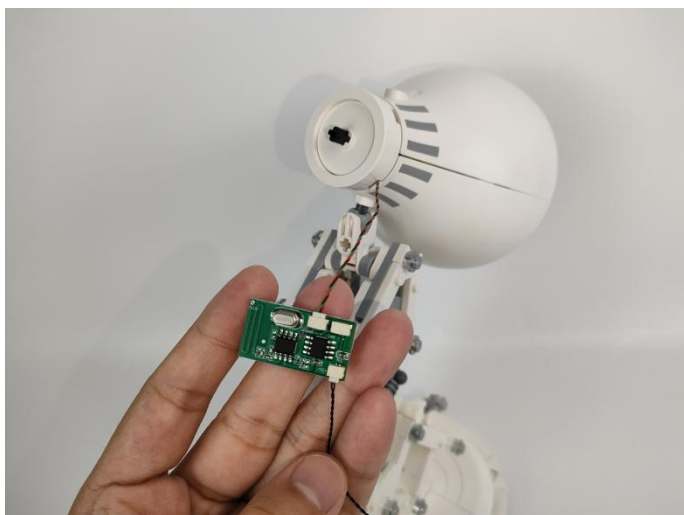
14



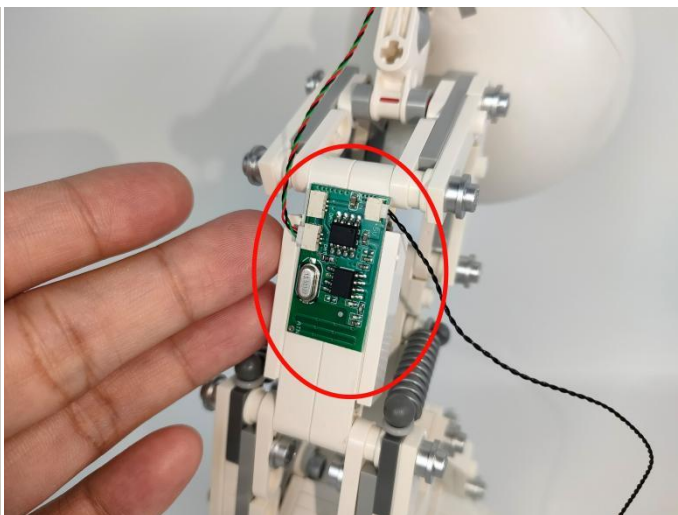
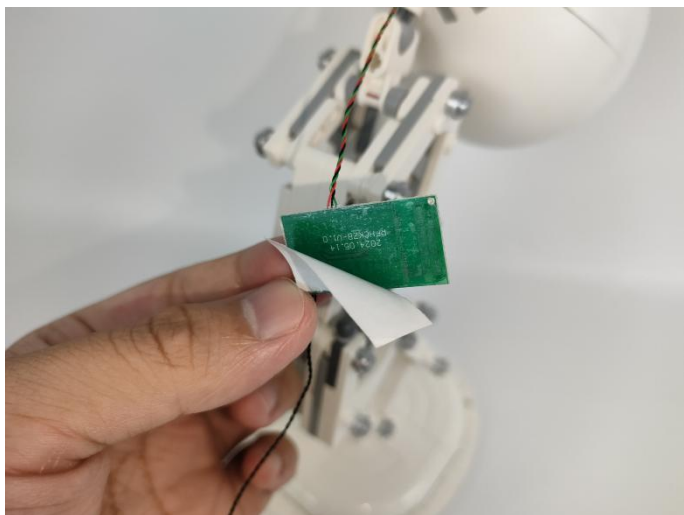
15



16



17



18



Good job, you've done all the installation steps, power it up and enjoy your work.



The battery box can also power the set. If it is necessary to change the power supply , prepare three AAA batteries, install them in the battery box, turn on the switch on the battery box, remove the plug of the USB Power Cable from the socket of the expansion board,plug the plug of the battery box to the same socket in the expansion board to power the suit as well.

THANKS