

75442 The Mandalorian's N-1 Starfighter

- Installation requires a lot of patience and great observation that your LEGO bricks will come alive when you get this finished. The bricks with lighting as below, so make sure you're ready and let's get started.



Strategies for the Installation

This instruction divides three sections to complete the installation of the lighting set.

Section A: Check the type and quantity of components.

The quantity and type of components of each products are different and it needs to be carefully checked to make sure there do have enough material. The type of components is indicated by the label on the bag.

Section B: Test that each components is working properly.

Each components is made individually so it is necessary to test that each components is working properly to avoid the situation that the lighting does not work .

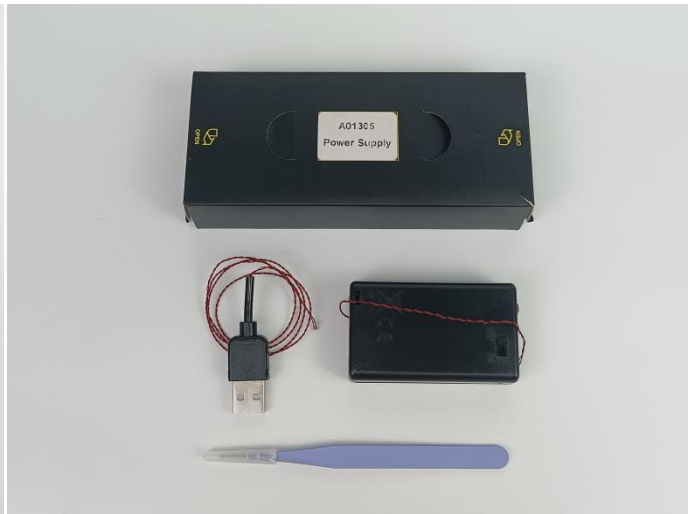
Section C: laying out components following the instruction.

Our material is very small but not fragile, just be reminded that don't to pull the wires too hard. For different people, there may be some installation steps that you can't understand. Please look at the previous and later installation step.

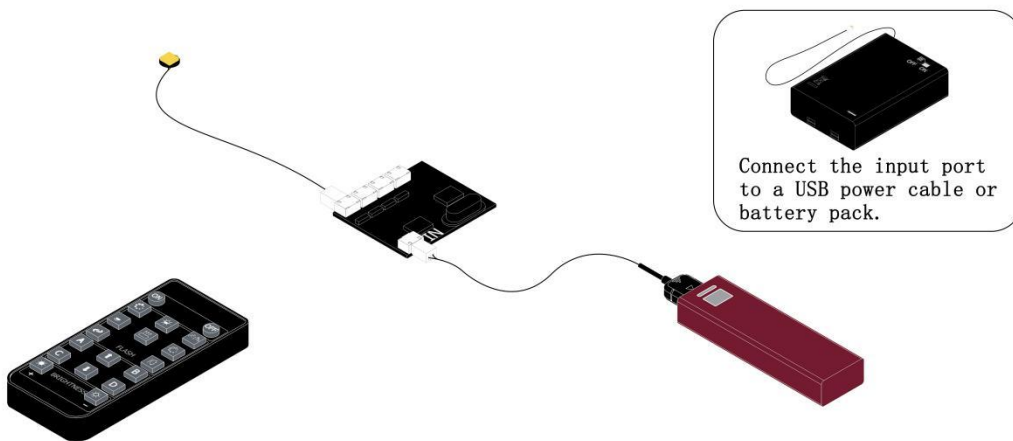
Section A: Check the type and quantity of components.

This set contains ten bags labelled "1" "2" "3" "4" "5" "6" "7" "8" "A03801 Remote Control" "A01305 Power Supply", please make sure that the components in each bag are the same as shown in the pictures.





Remote Control Module Testing



Remove the light fixture from any bag and connect it to the output port of the remote control template.

Testing Procedure:

1. Press the ON button on the remote control;
2. Observe whether the lighting fixture illuminates;
3. Press the OFF button on the remote control;
4. Test each output port individually.

Remote control safety lock and battery model description

Batteries are not included in the remote control, please go to the nearest store to buy CR2025 or CR2032 button batteries to install in the remote control.



Please contact us immediately if there have any missing components.

Section B: Test that each components is working properly.

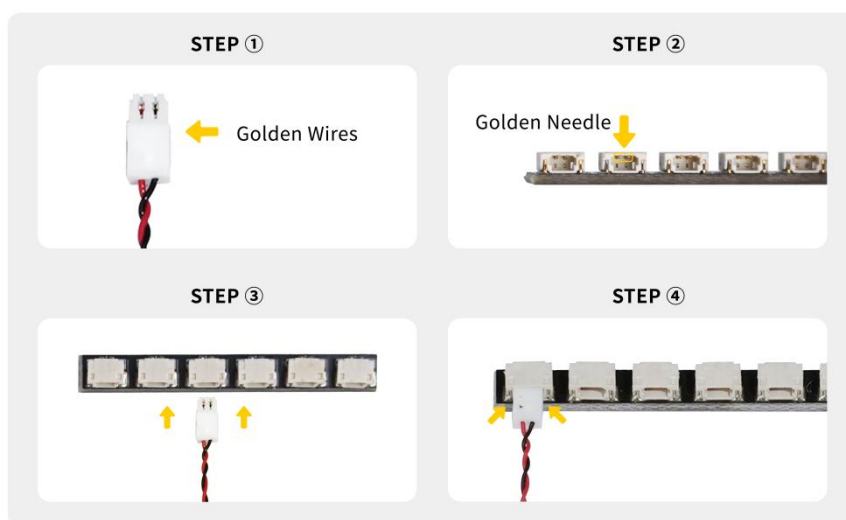
Take out the expansion board and usb power cable from "No. 7 bag " and the "A01305 Power Supply" .



It is worth reminding that our products are all customized. They have a unique way of connecting. The white plug on wire and the socket of the expansion board need to be connected together to transmit power.

Note that on one side of the white plug you can see two very small golden wires that should be connected to the two golden needles in socket of the expansion board. shown as blow.

Side-Mounted Expansion Board



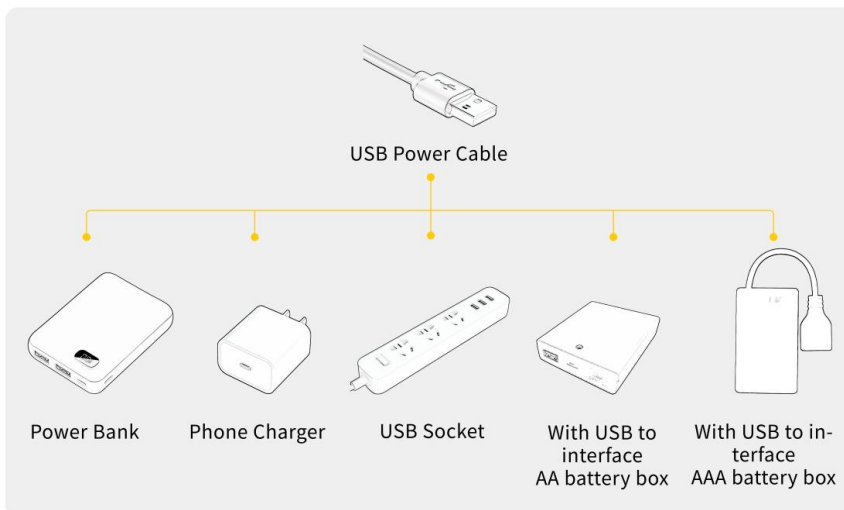
All our connections between plug and socket are all the same as shown above. So for any such structure with plug and socket, please pay attention to the golden wire of the plug and the golden needle of the socket, they must be touched together.

The connection method between the usb power cord and expansion Boards is as follows:



The usb power cord can be powered by phone chargers, power banks, etc.

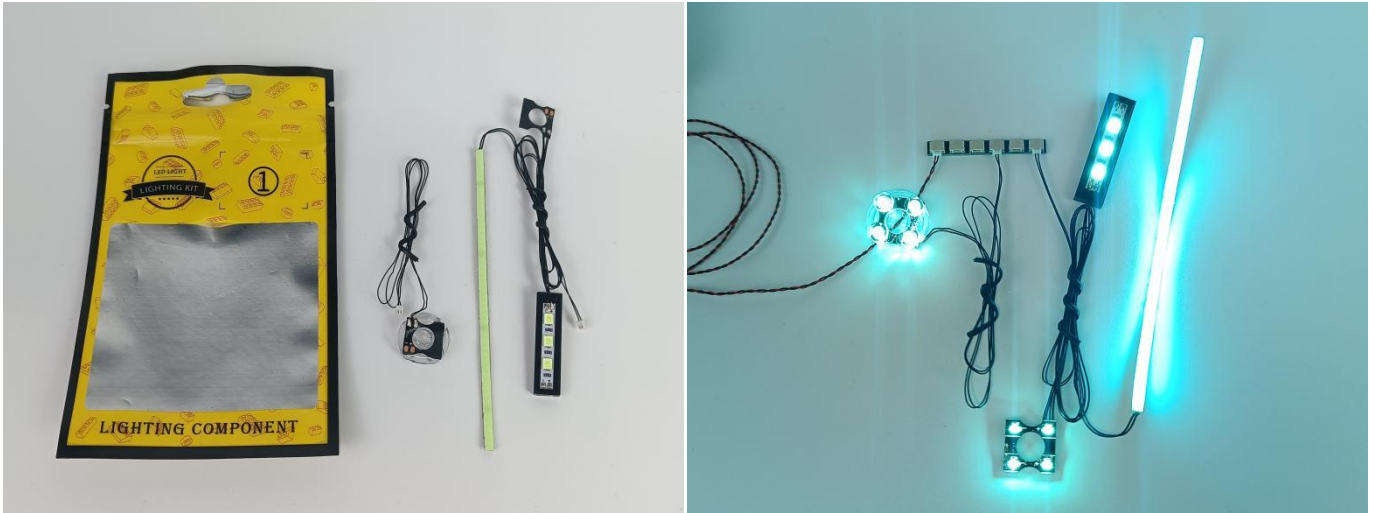
USB Connectors to Connect Devices



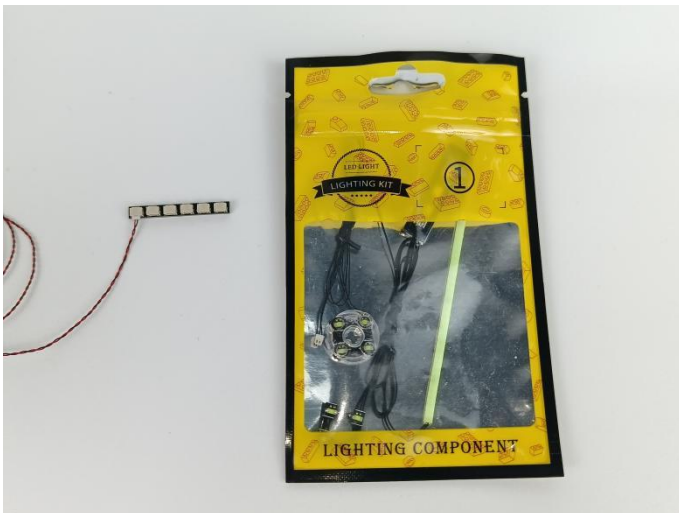
This instruction will use the power bank as power supply . The test structure is shown as follow. All lamp in this set will be tested by this structure.



When we test the "①" lighting fixtures, remove one of them and connect it to the socket. Turn on the portable power bank, and the light strip will light up normally, as shown in the figure below.

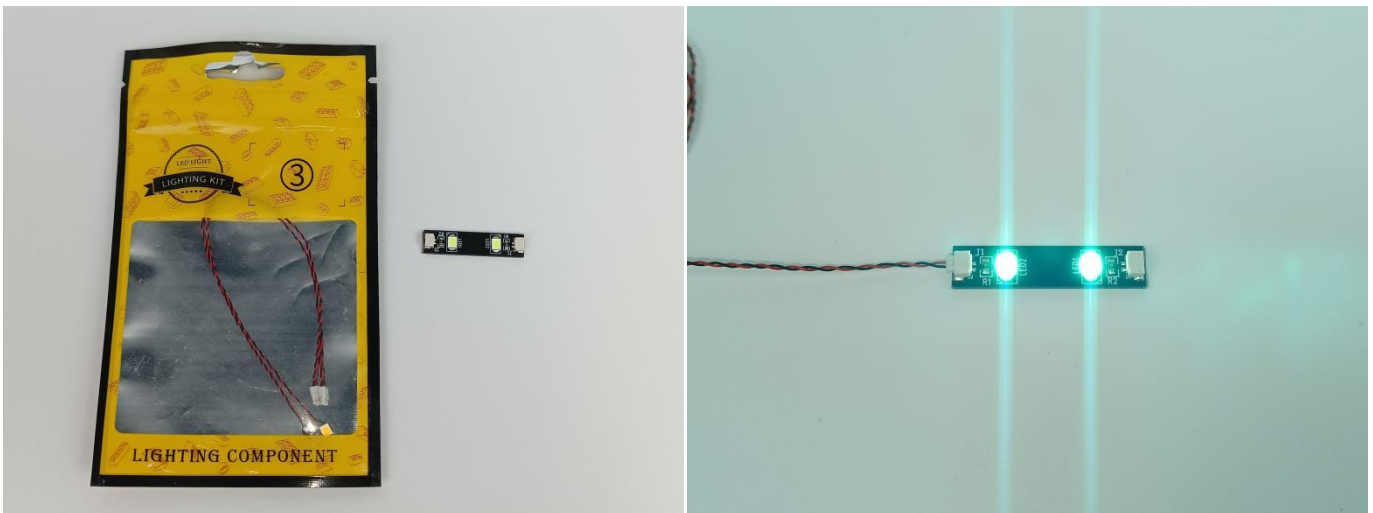


Test each lamp according to this method. It should be noted that after the test, the lamp must be returned to the corresponding bag to avoid confusion of types.



LED strip test:

Take out the led light bar, connect the usb power cable, turn on the mobile power supply, the light will be on normally, as shown in the figure below.



Section C: laying out components following the instruction.

1



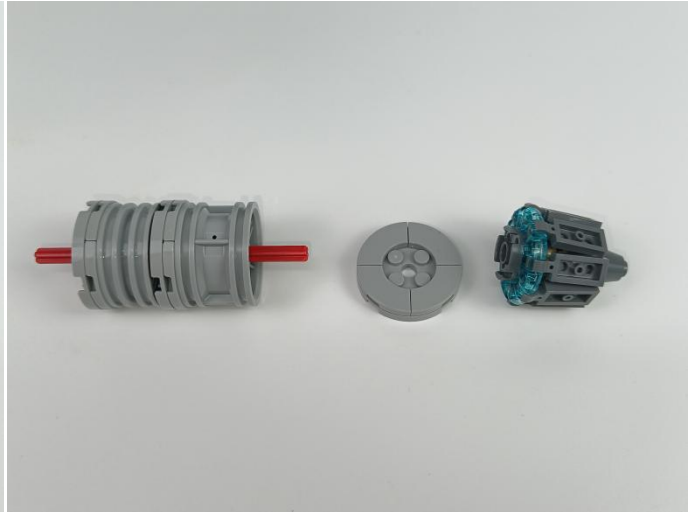
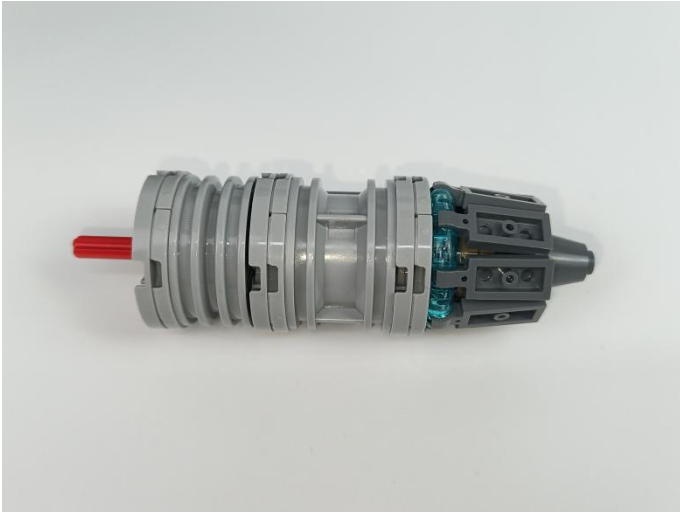
2



3



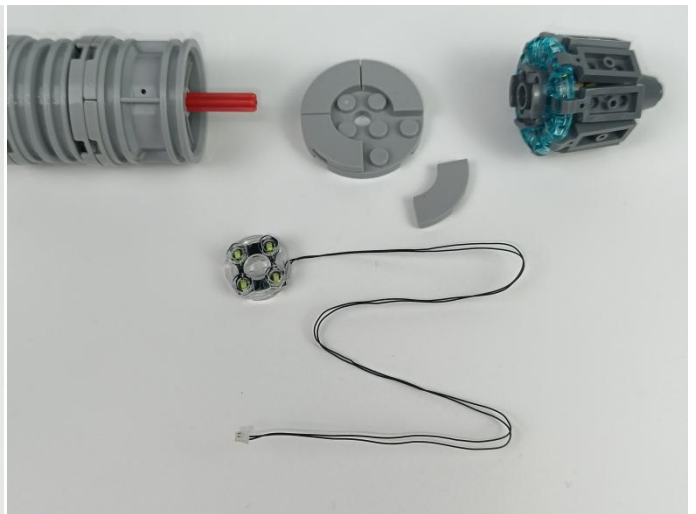
4



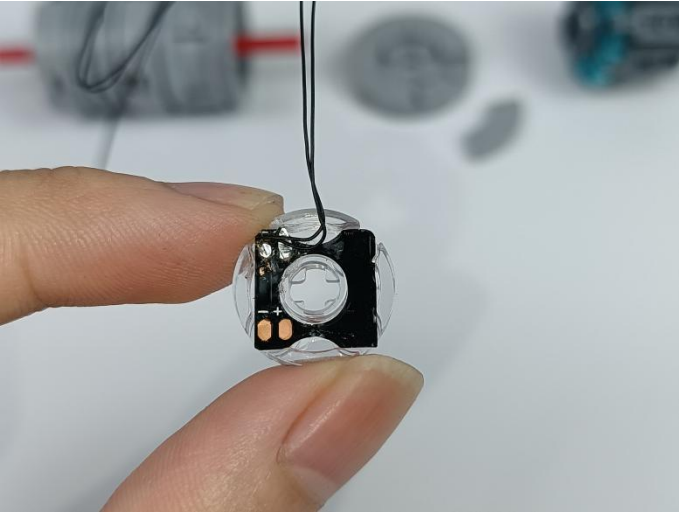
5



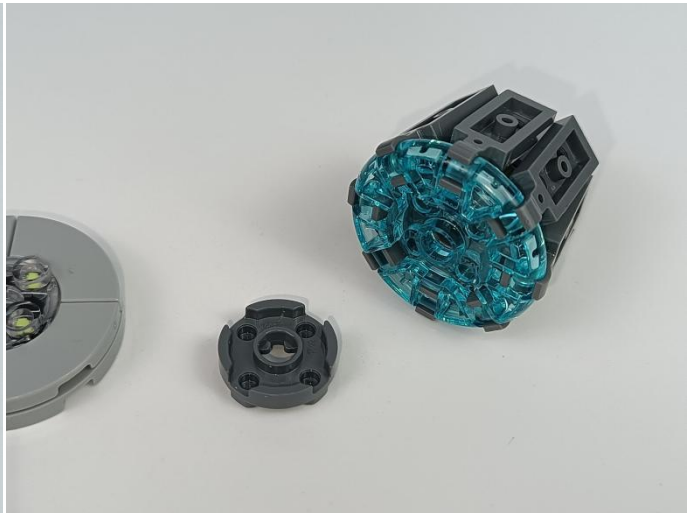
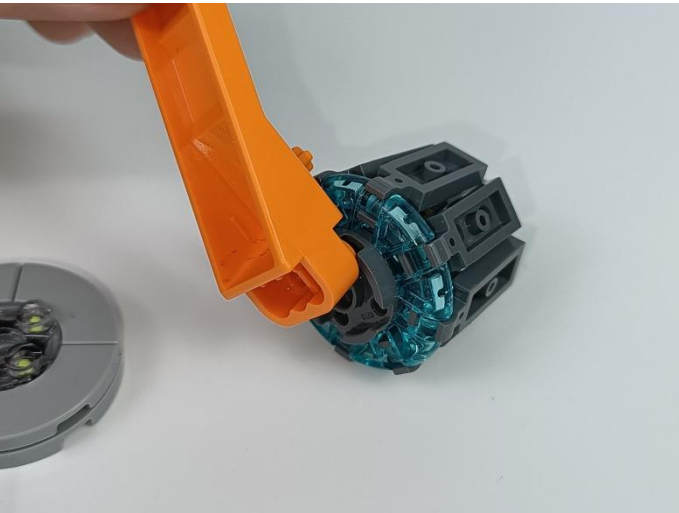
6



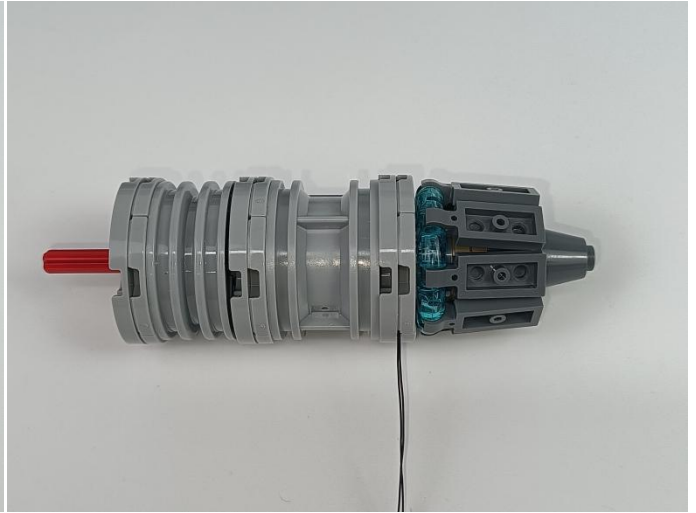
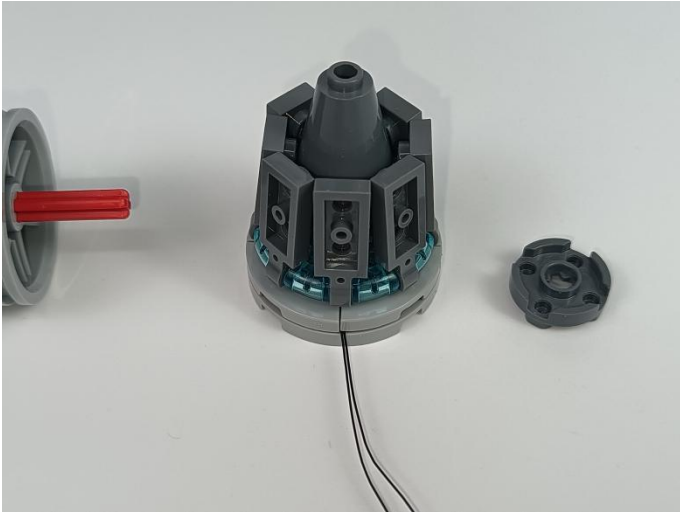
7



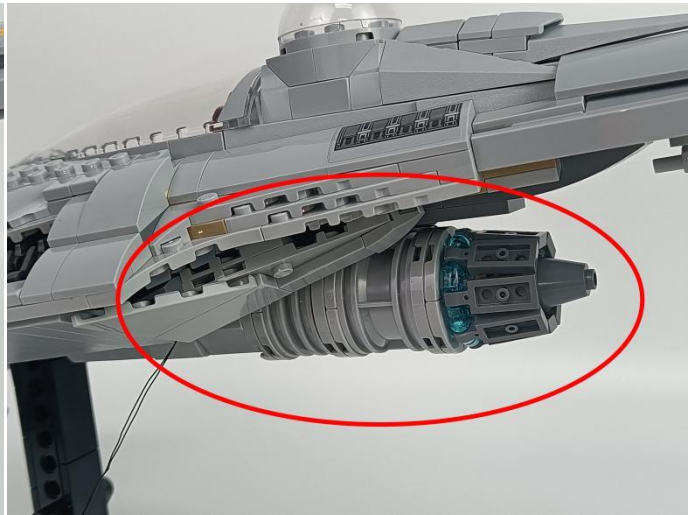
8



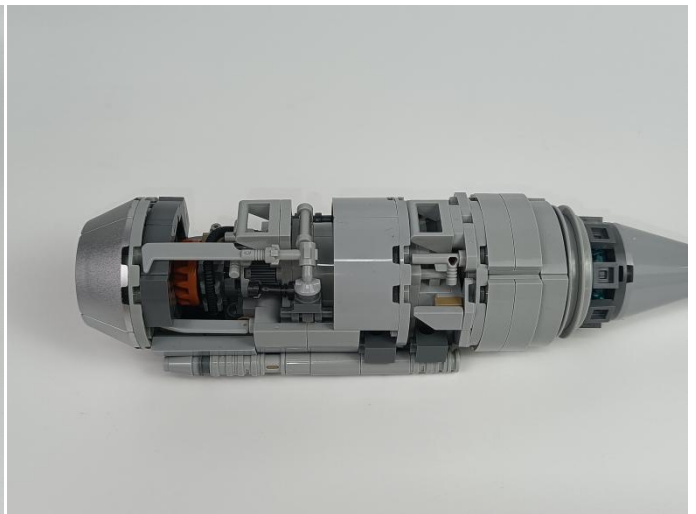
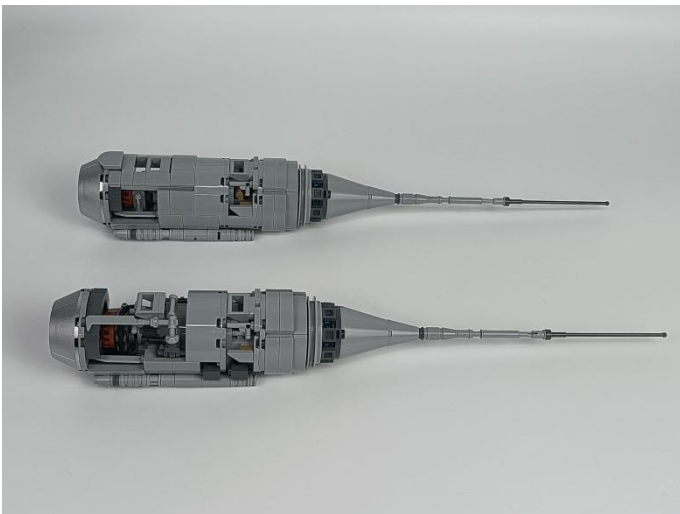
9



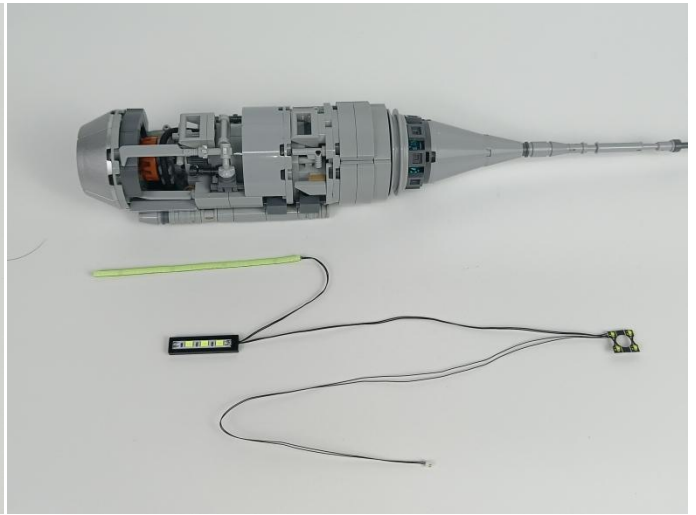
10



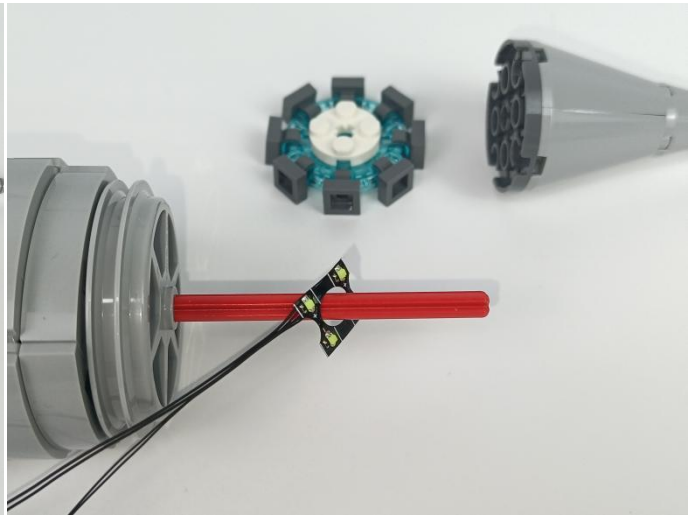
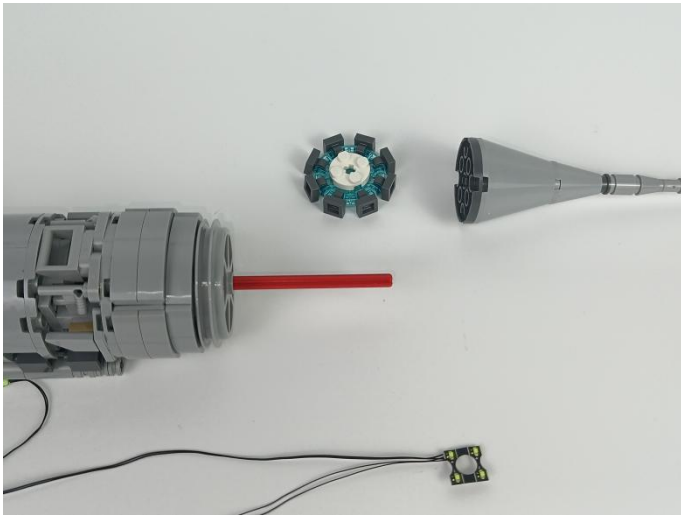
11



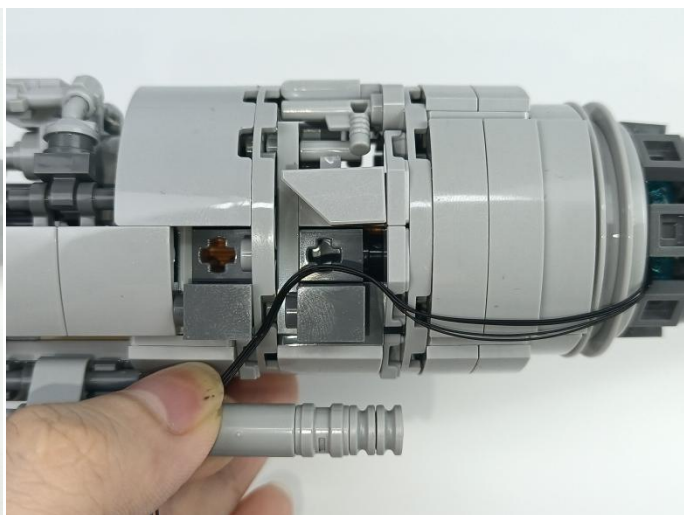
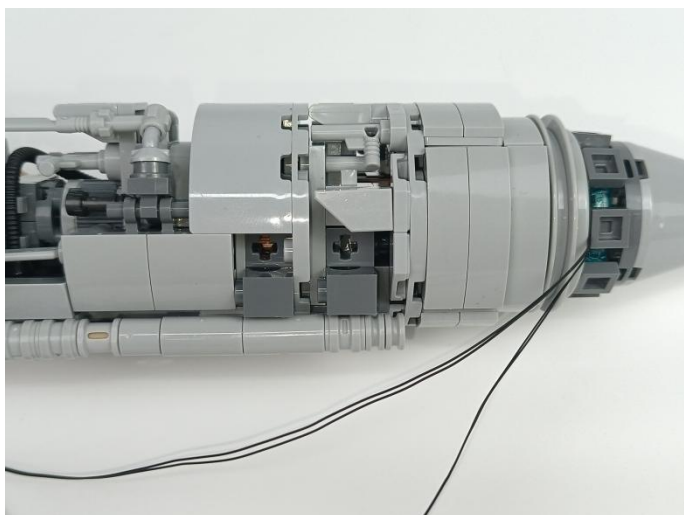
12



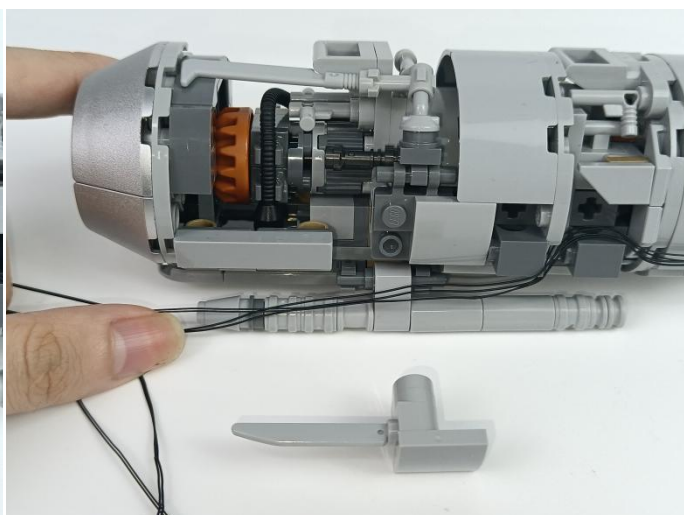
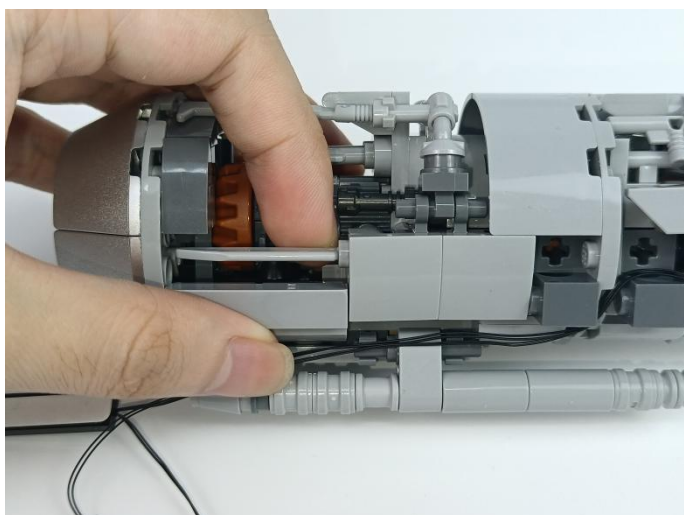
13



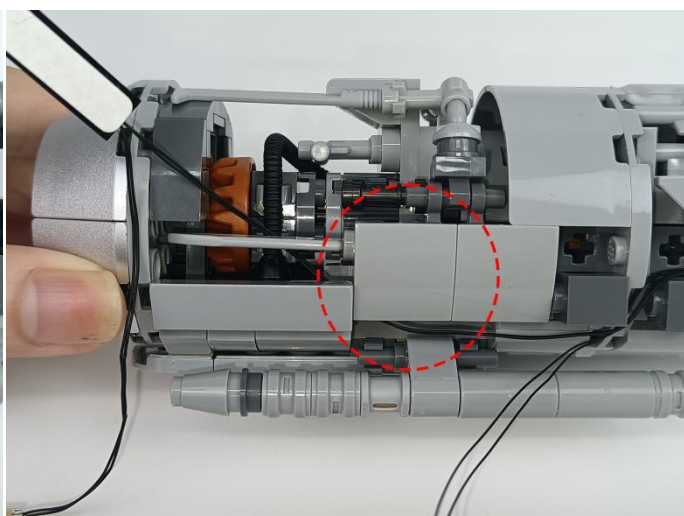
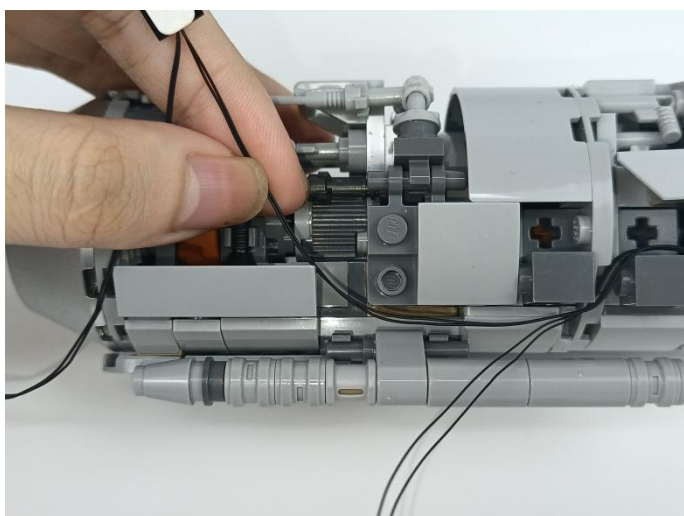
14



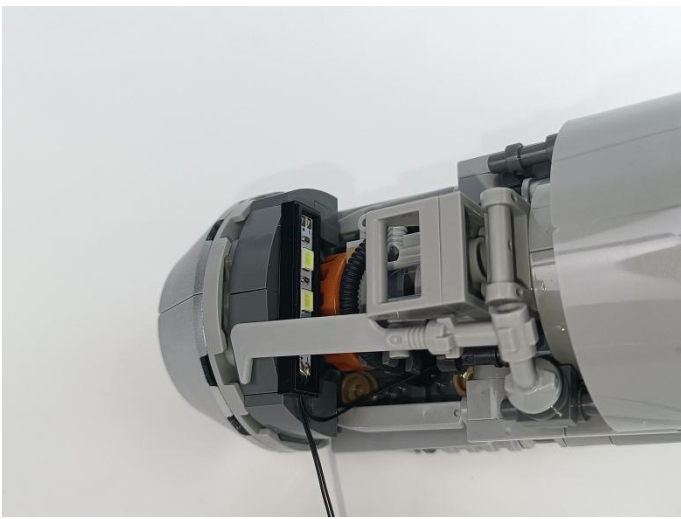
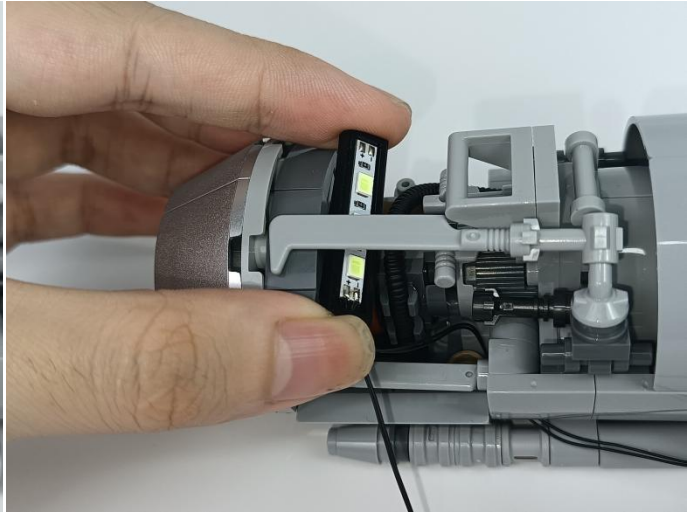
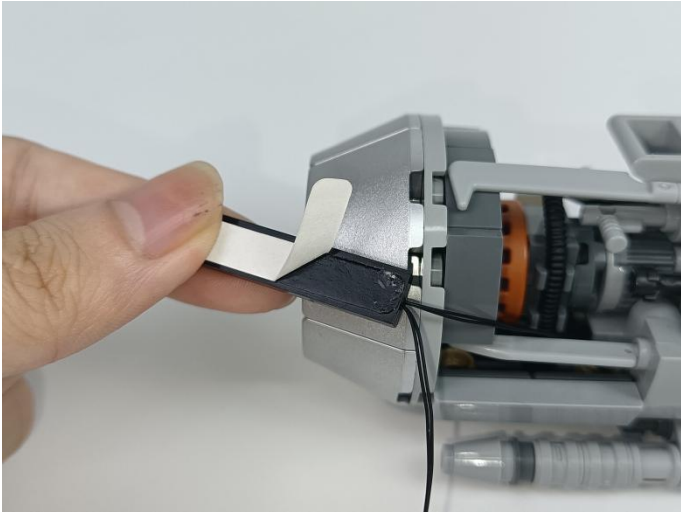
15



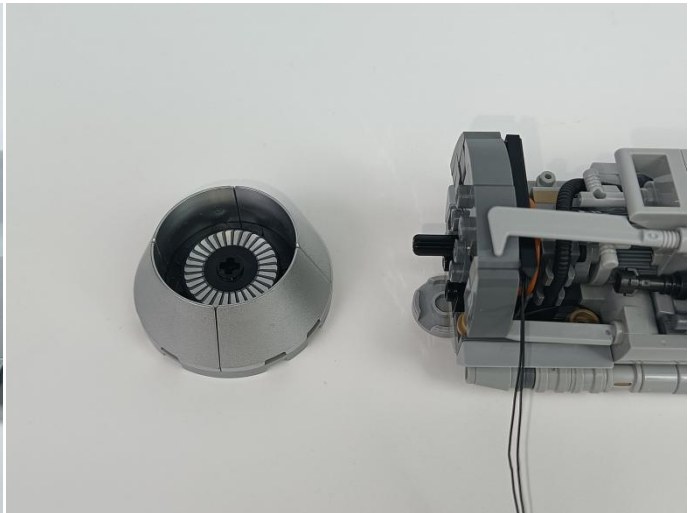
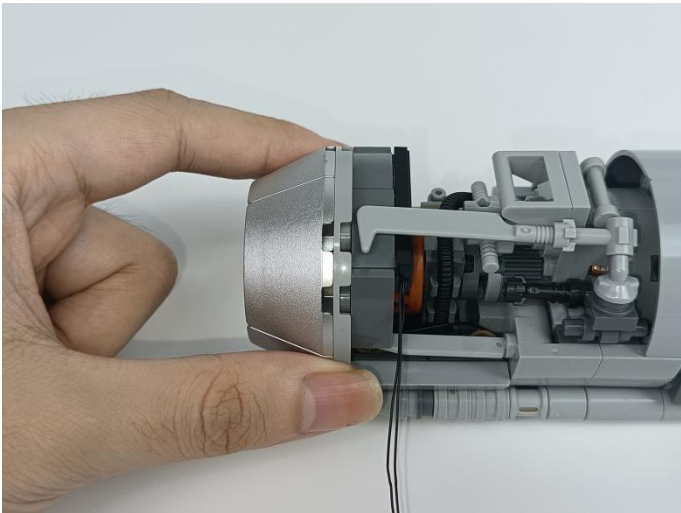
16



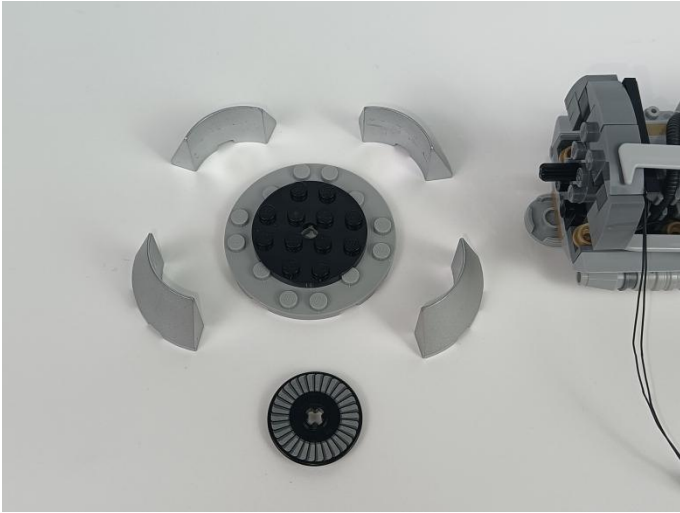
17



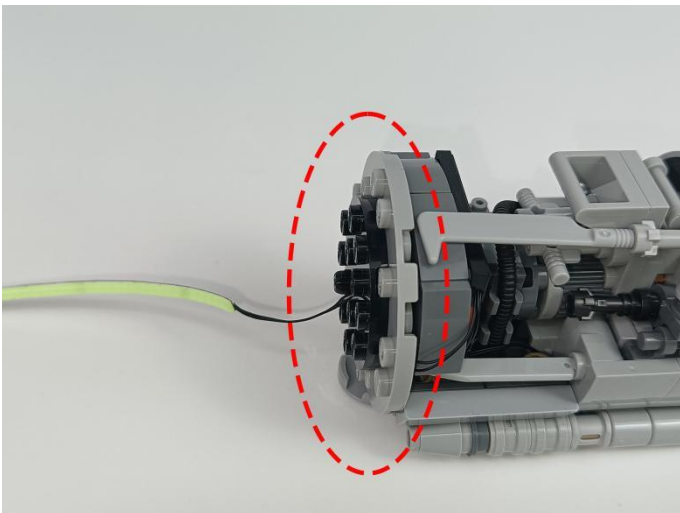
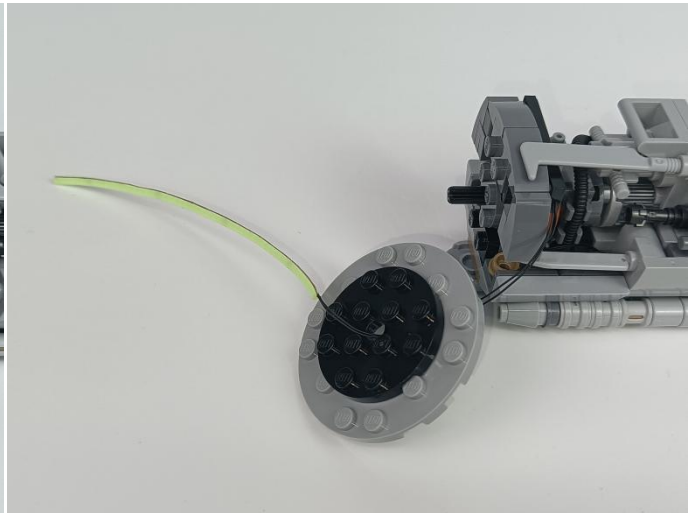
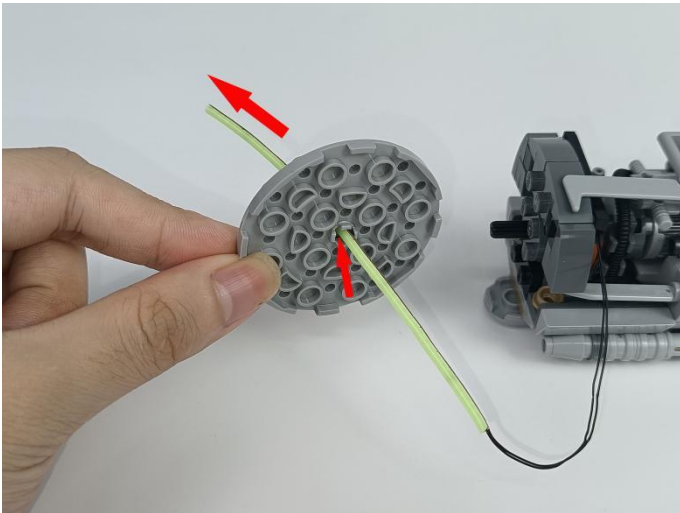
18



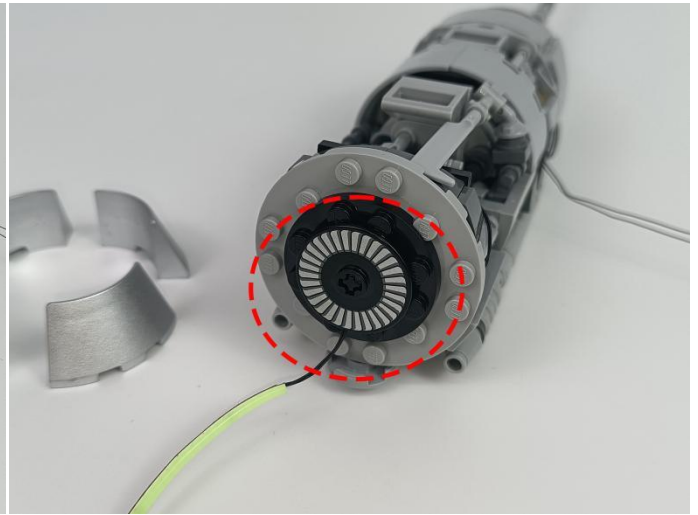
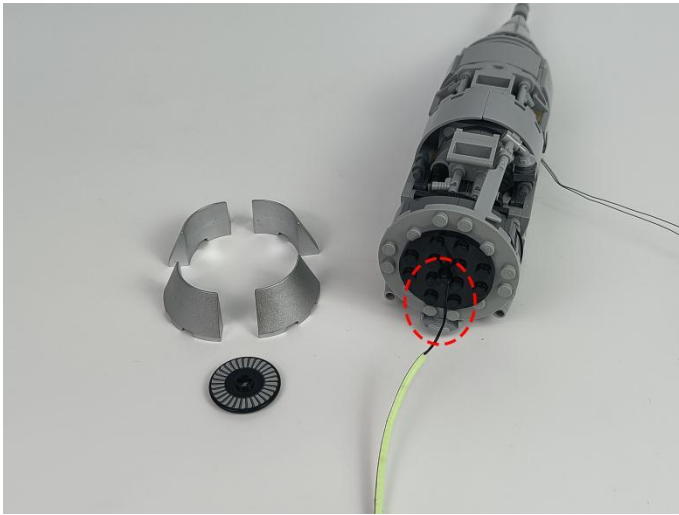
19



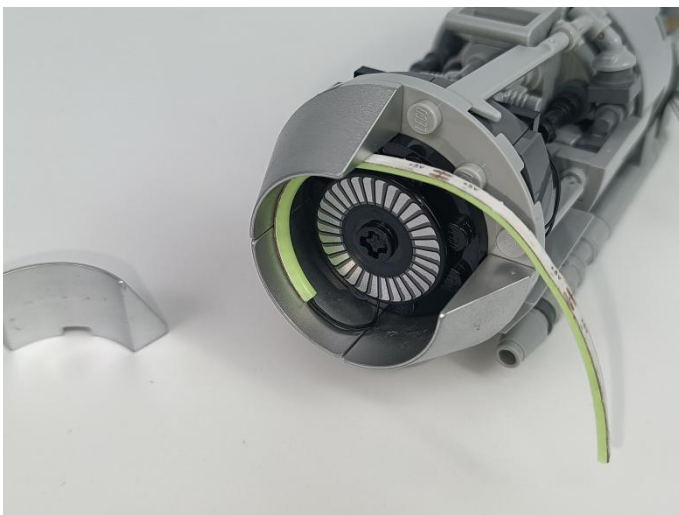
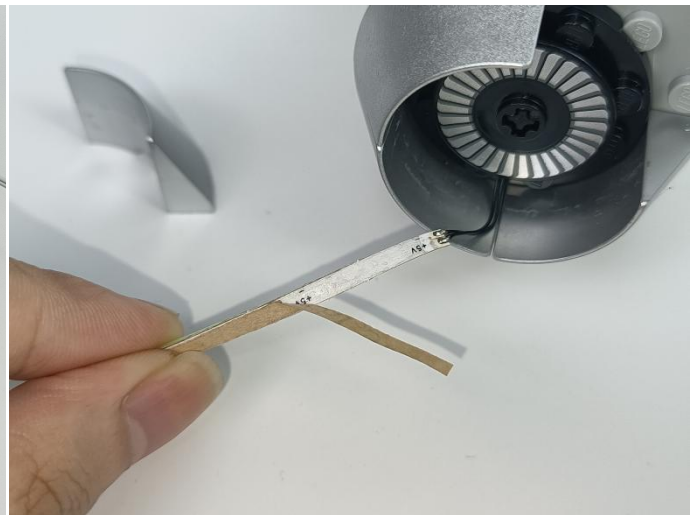
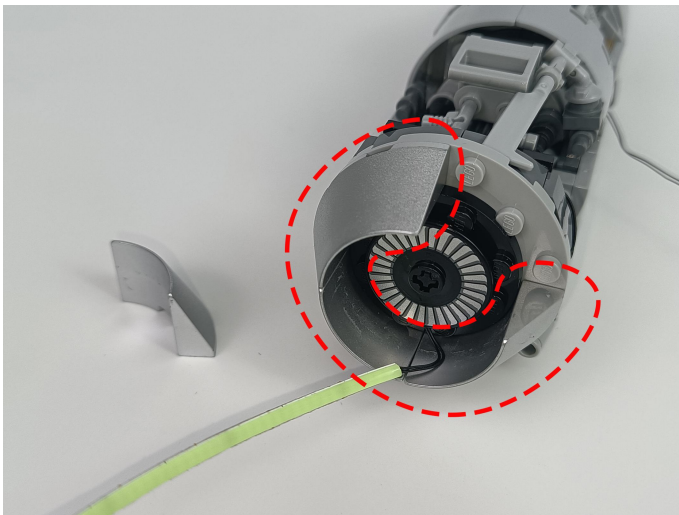
20



21



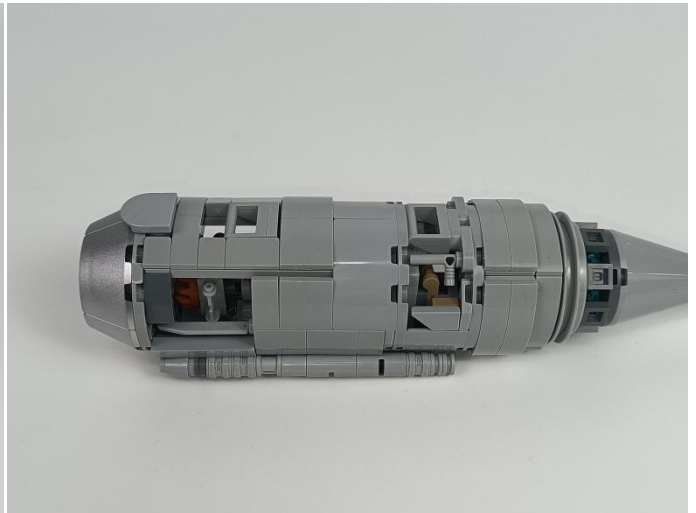
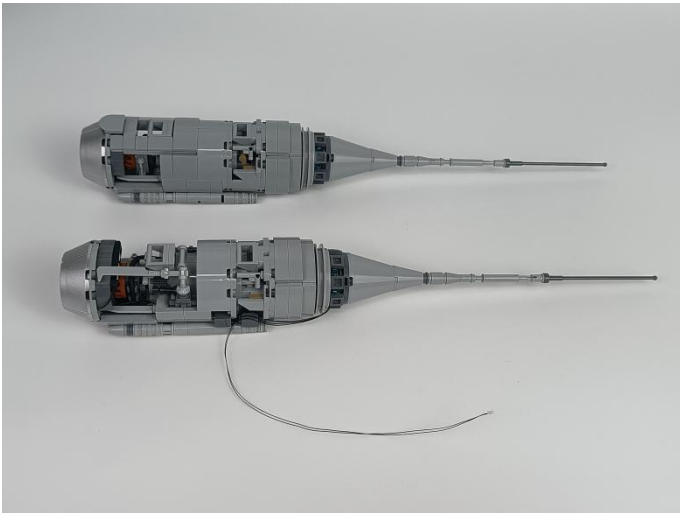
22



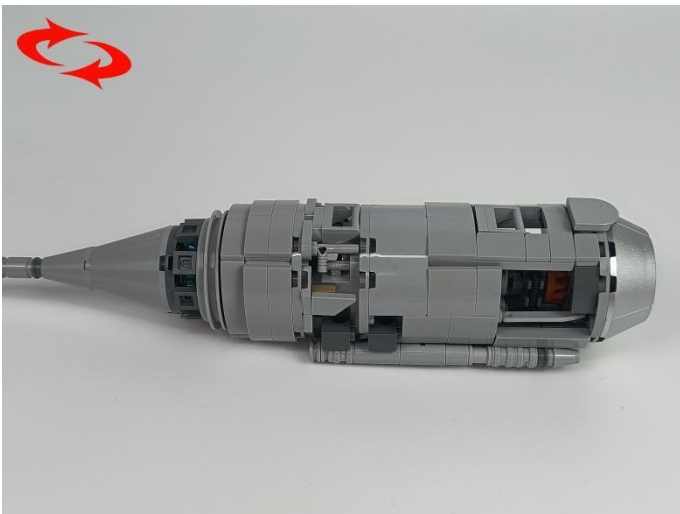
23



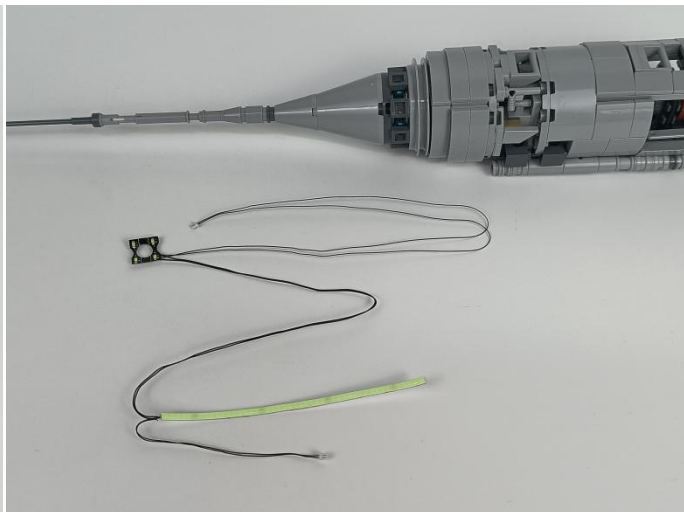
24



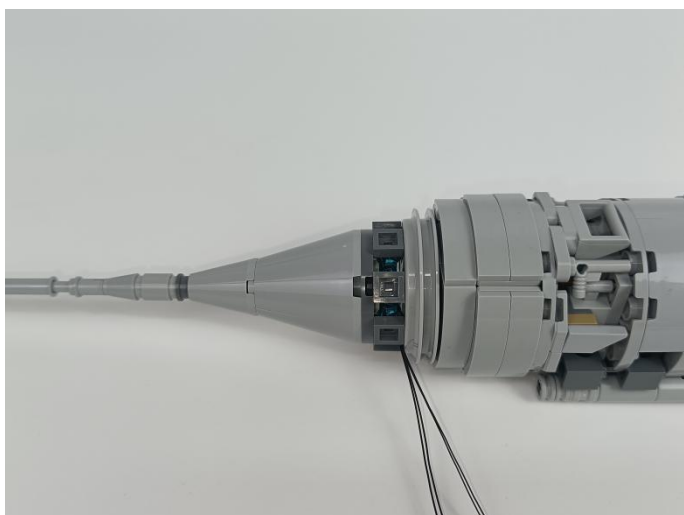
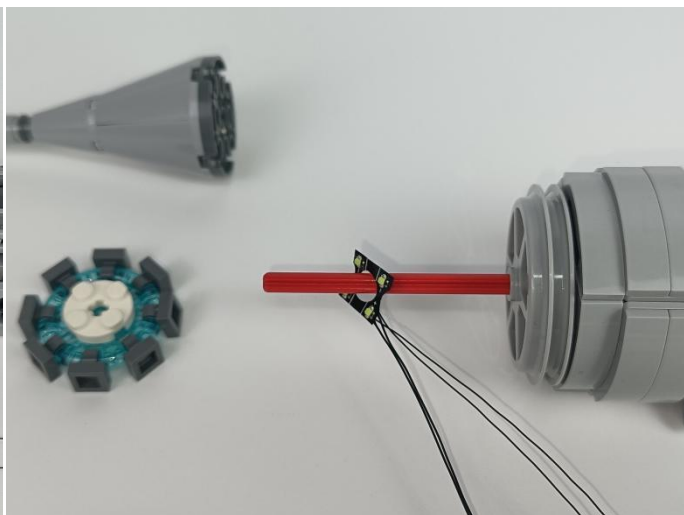
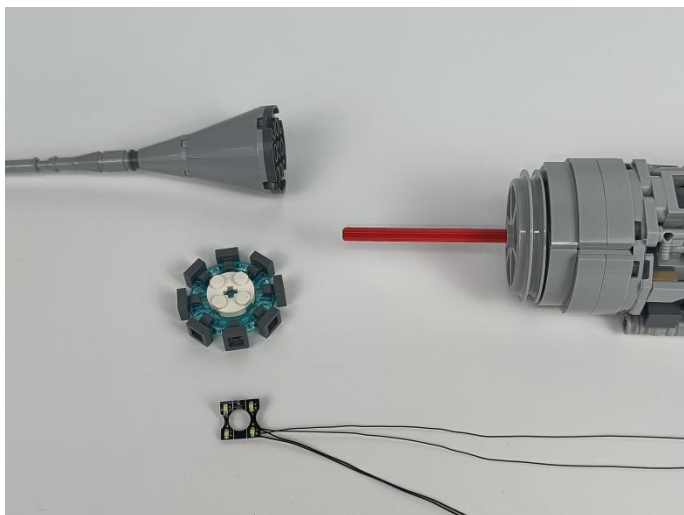
25



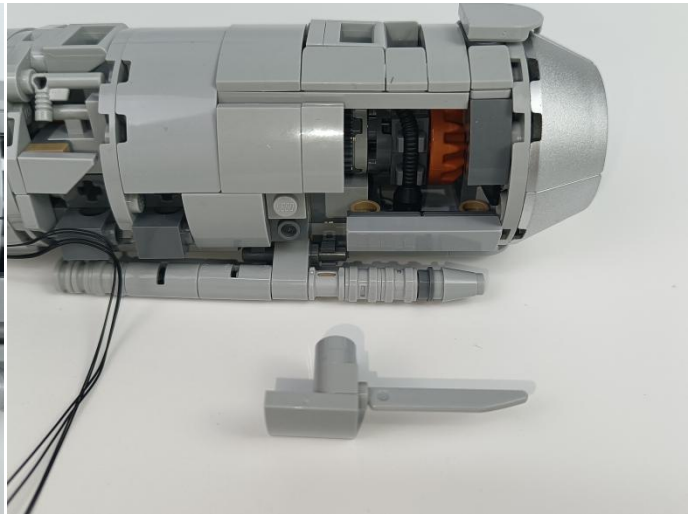
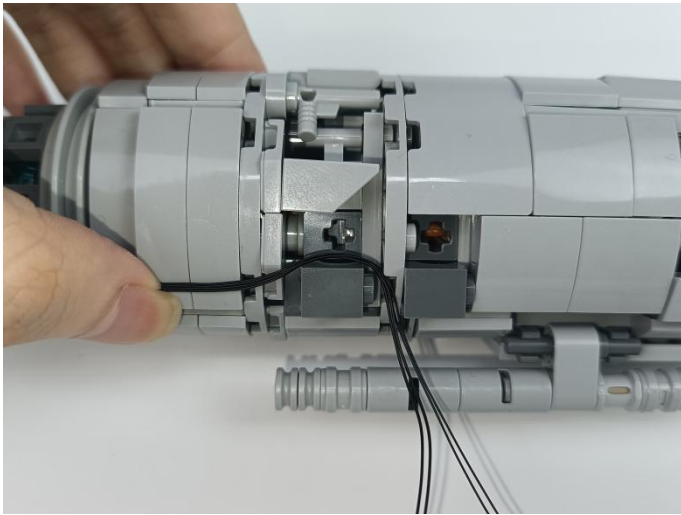
26



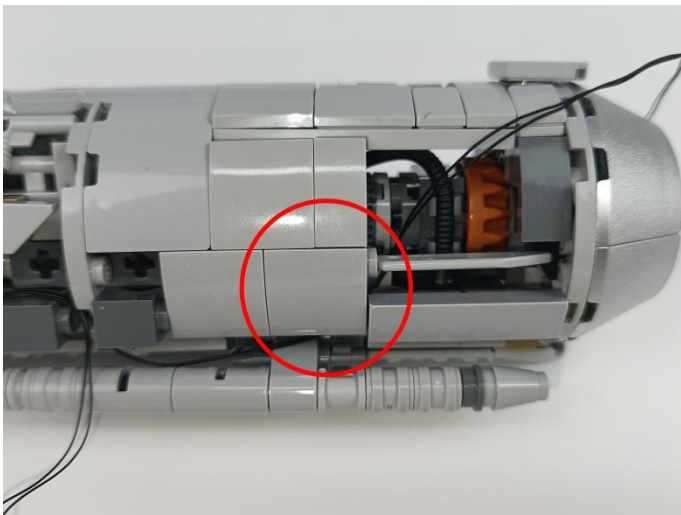
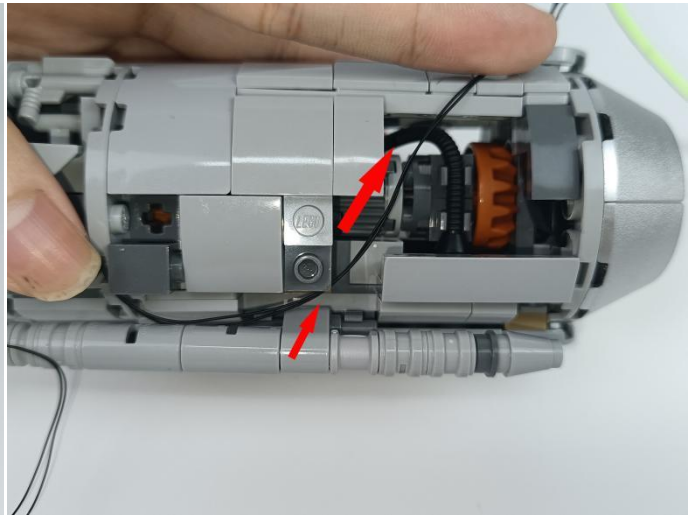
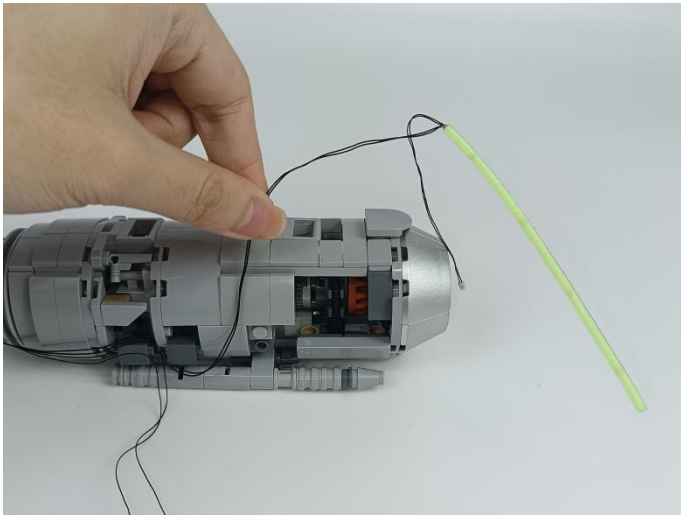
27



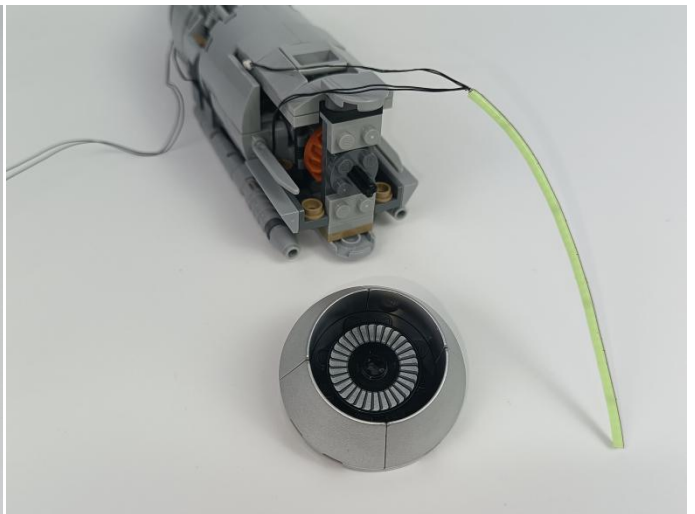
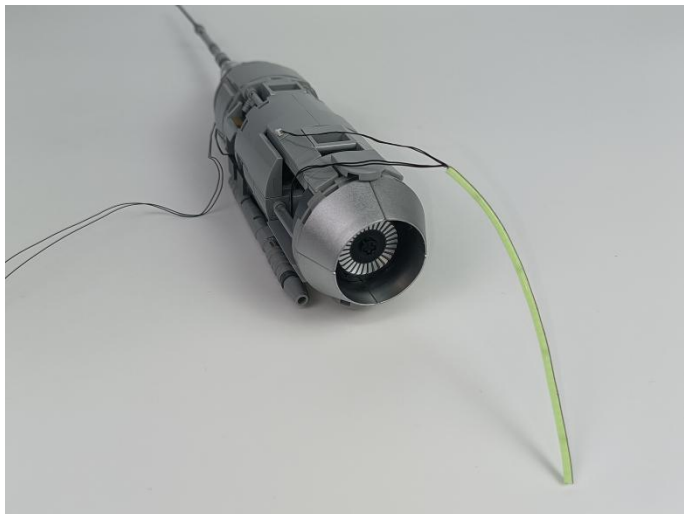
28



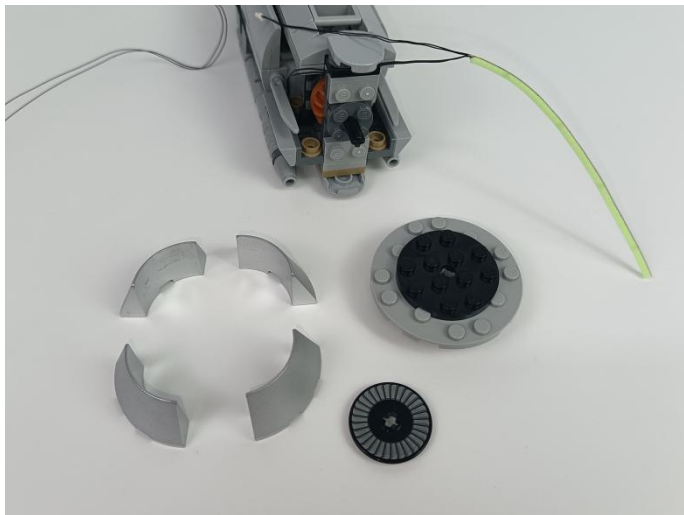
29

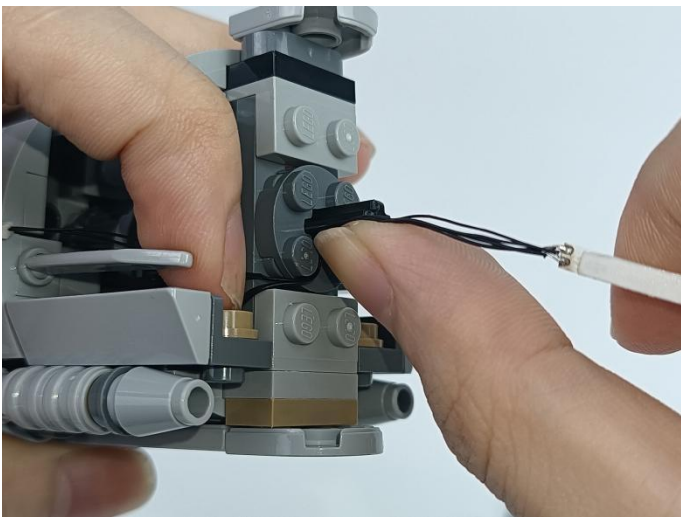
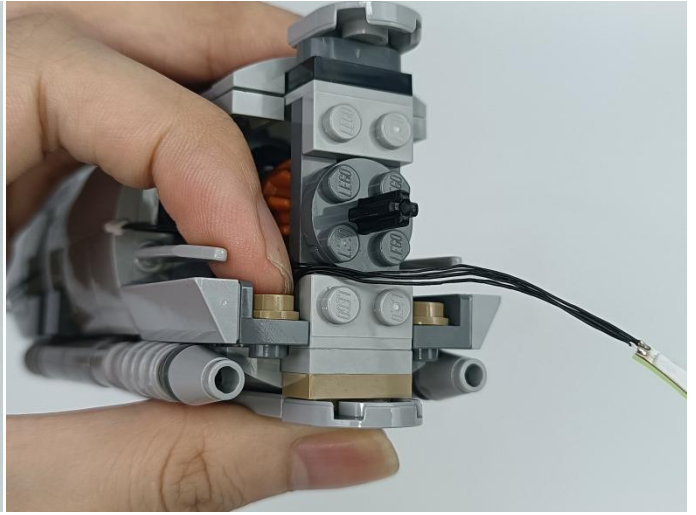
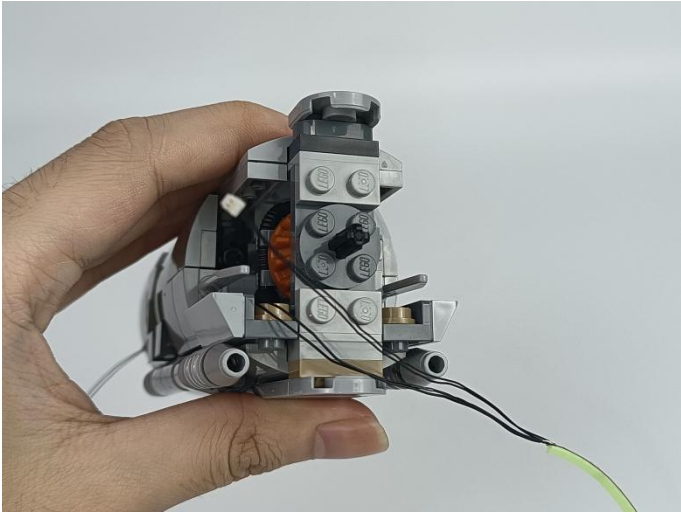


30

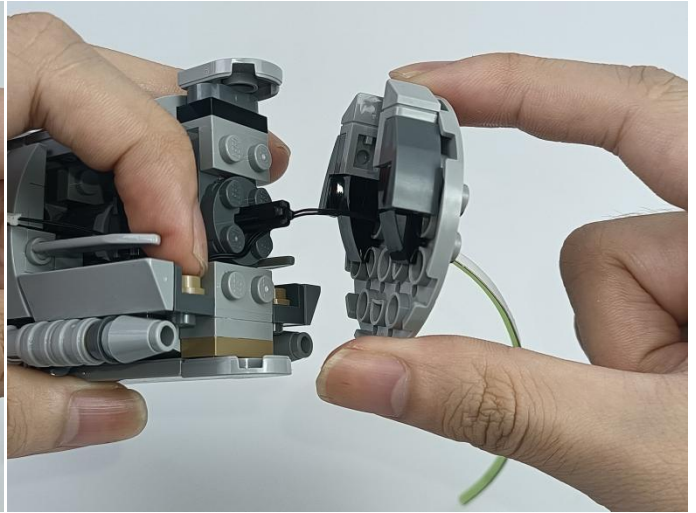
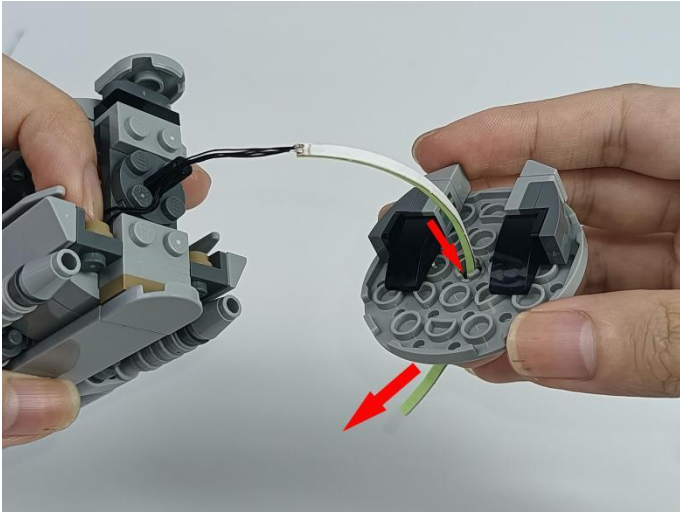


31

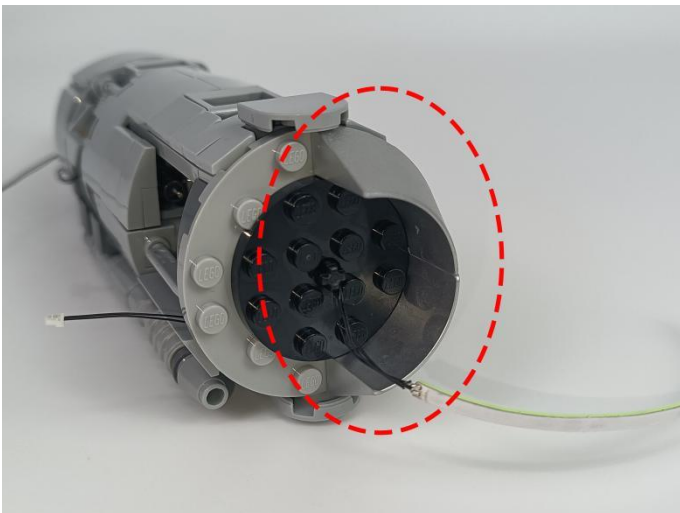




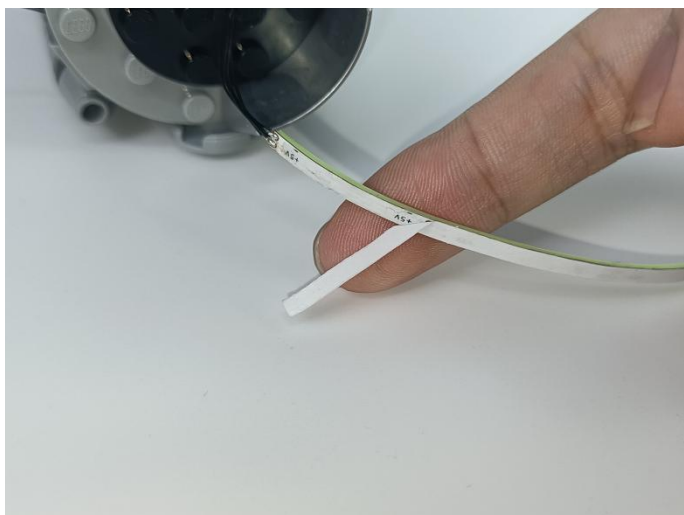
33



34



35



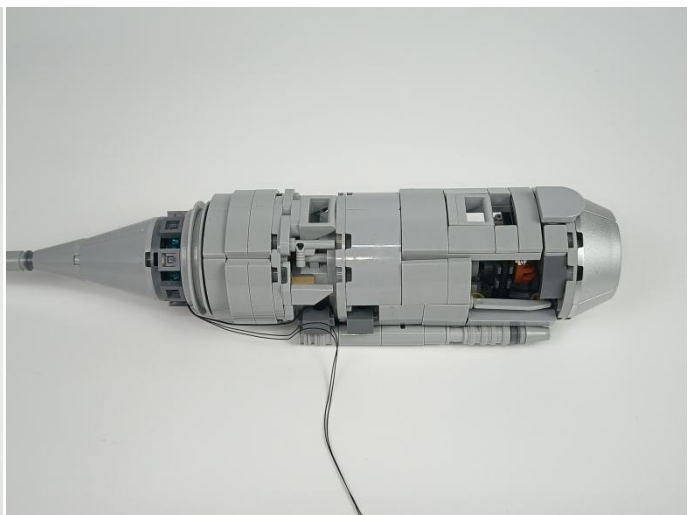
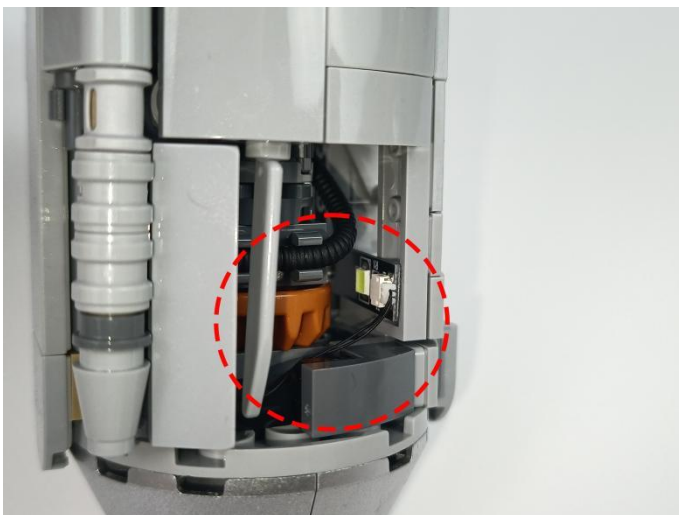
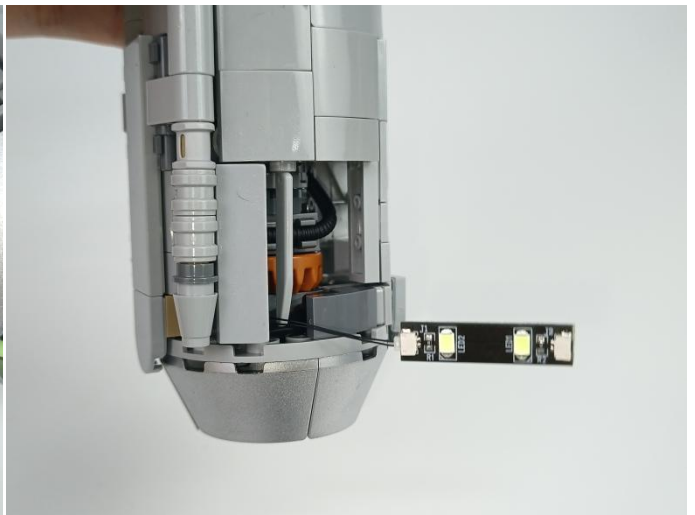
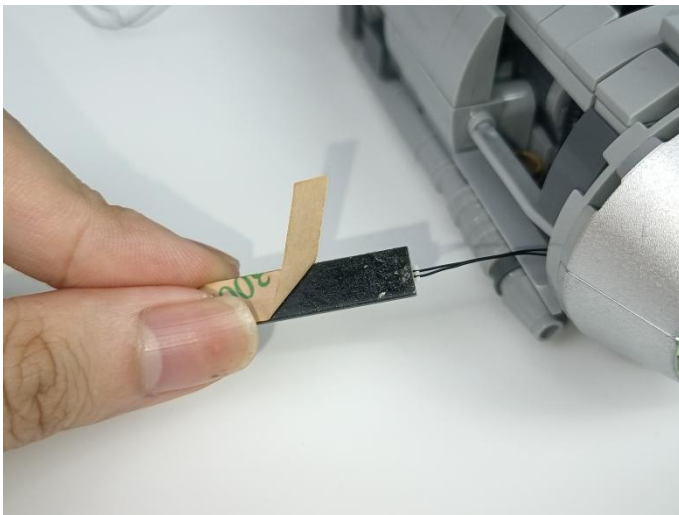
36



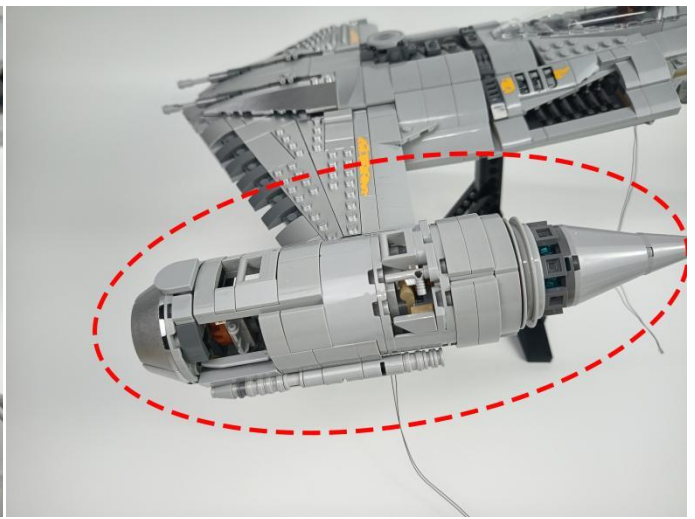
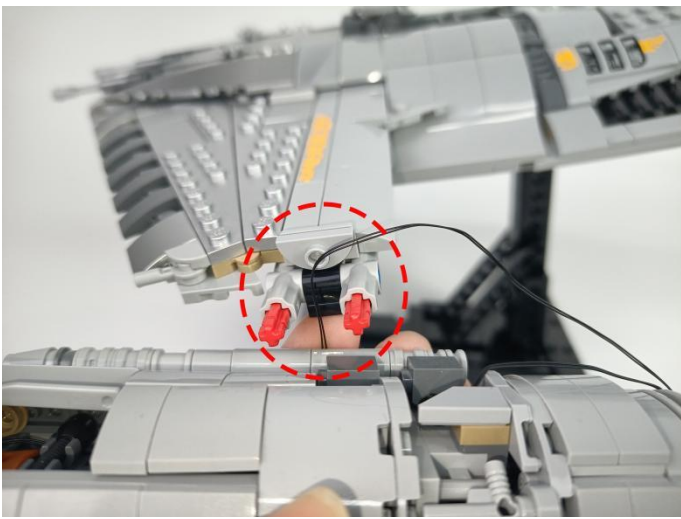
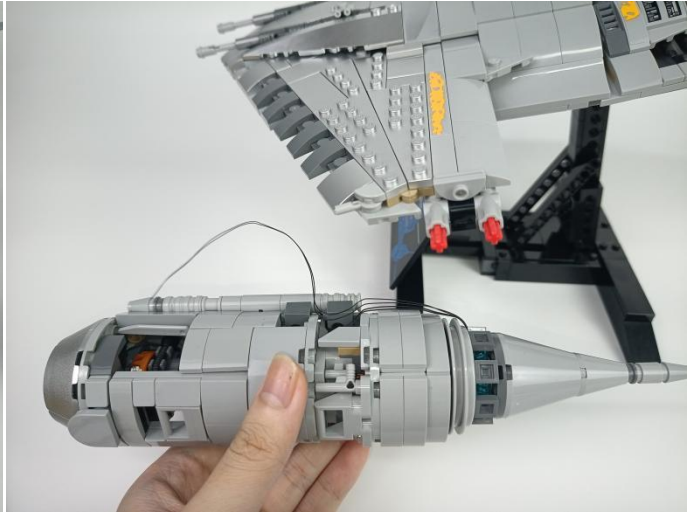
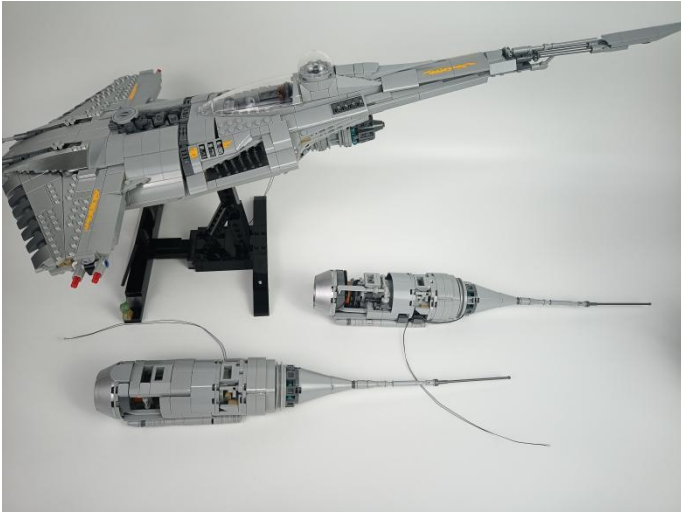
37



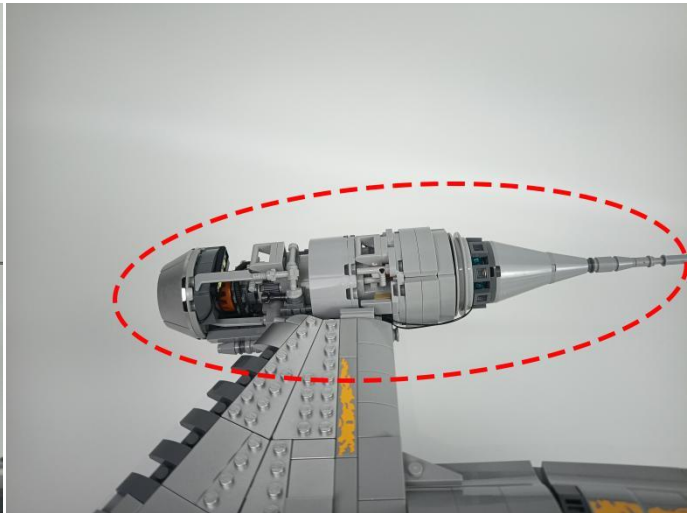
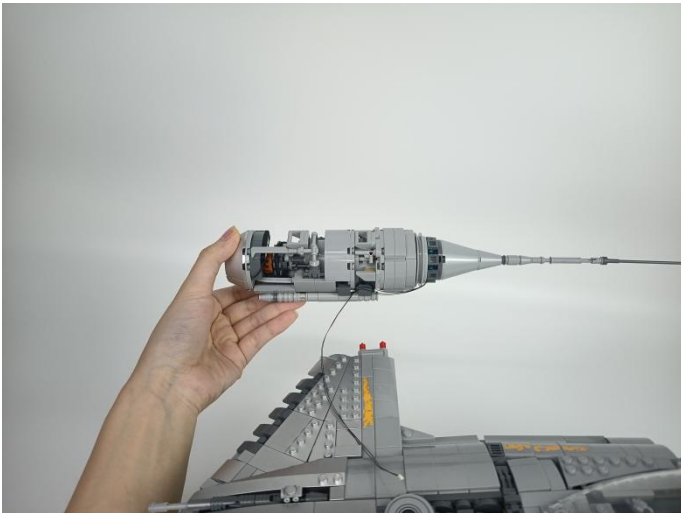
38



39



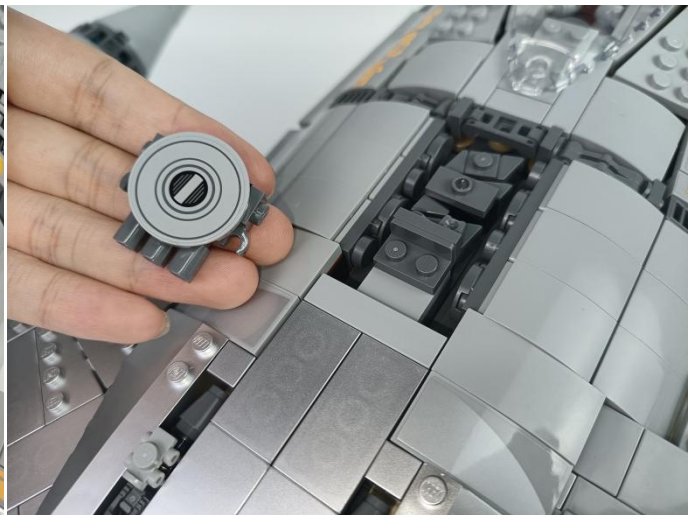
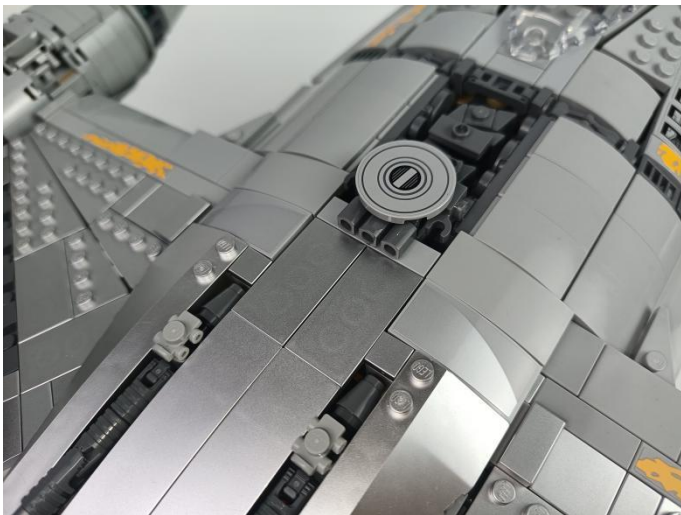
40



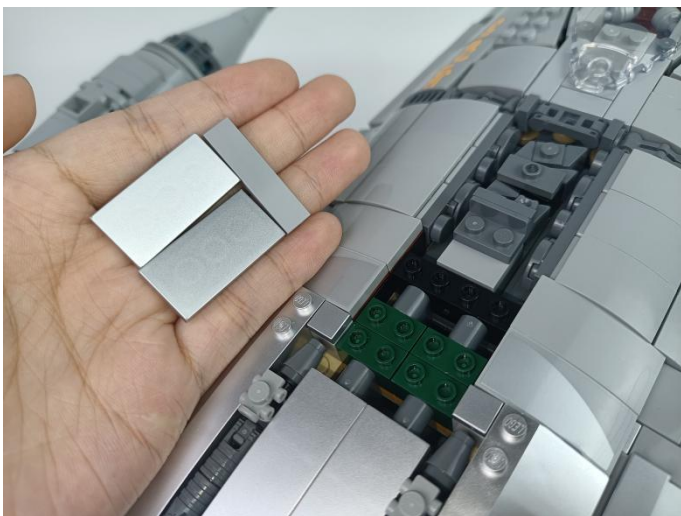
41



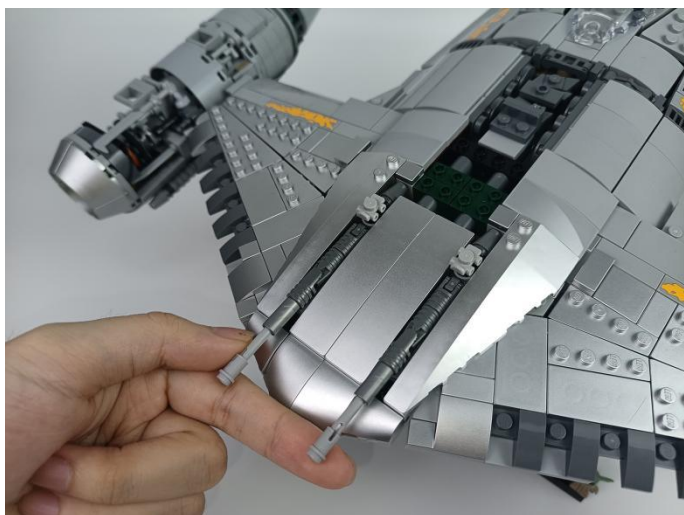
42



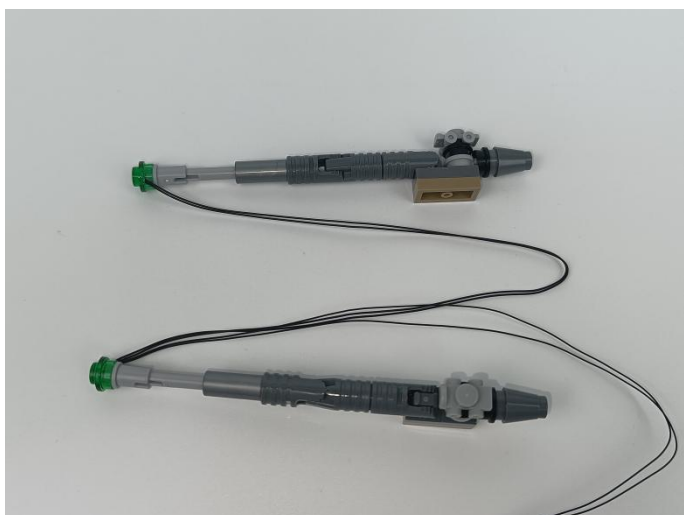
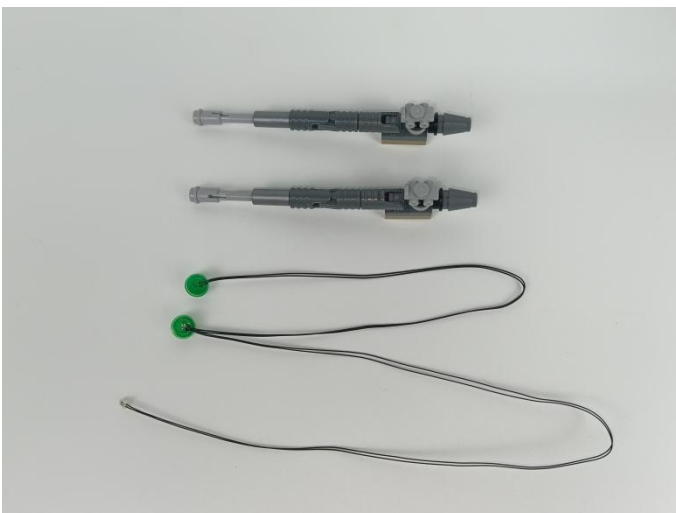
43



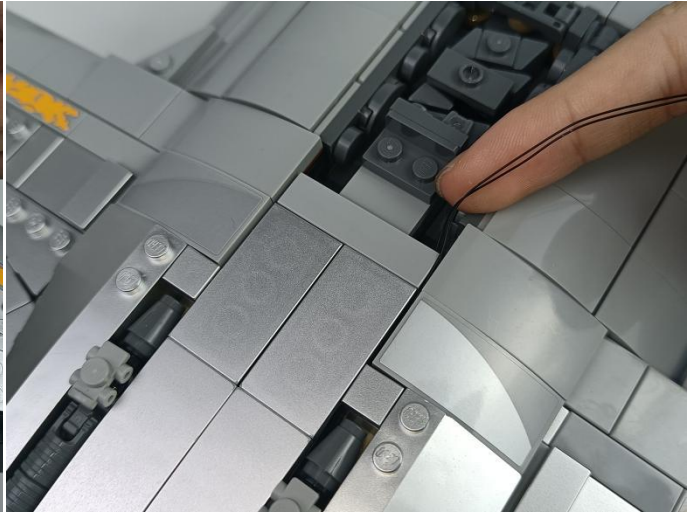
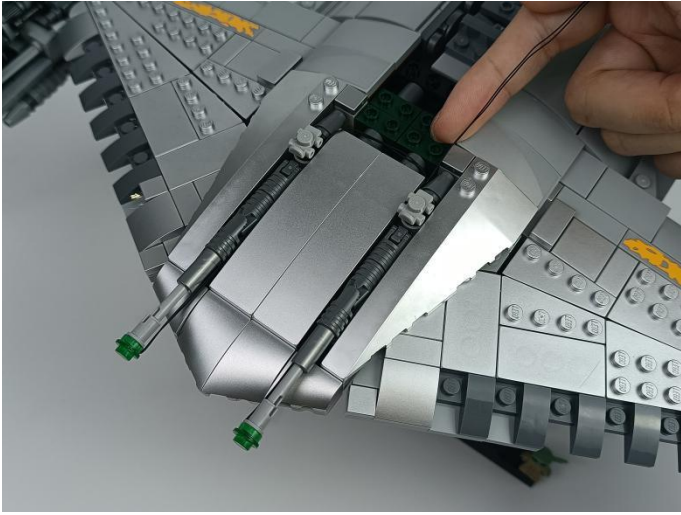
44



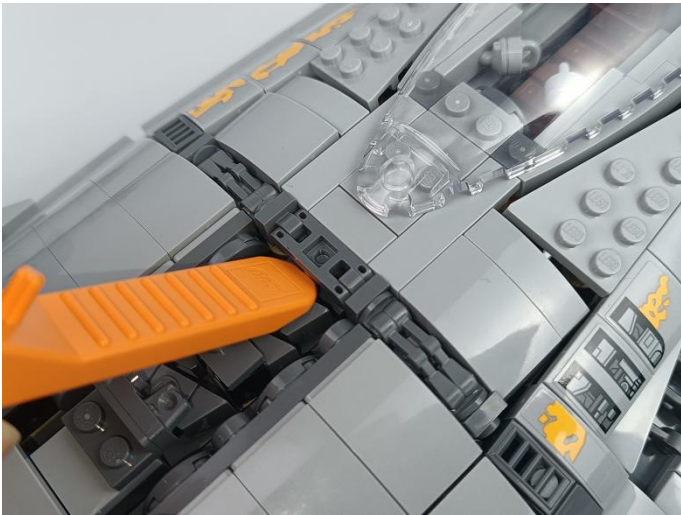
45

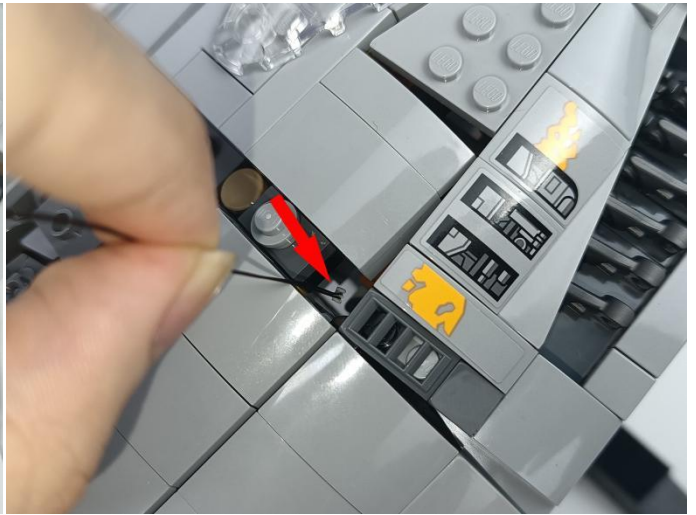


46



47

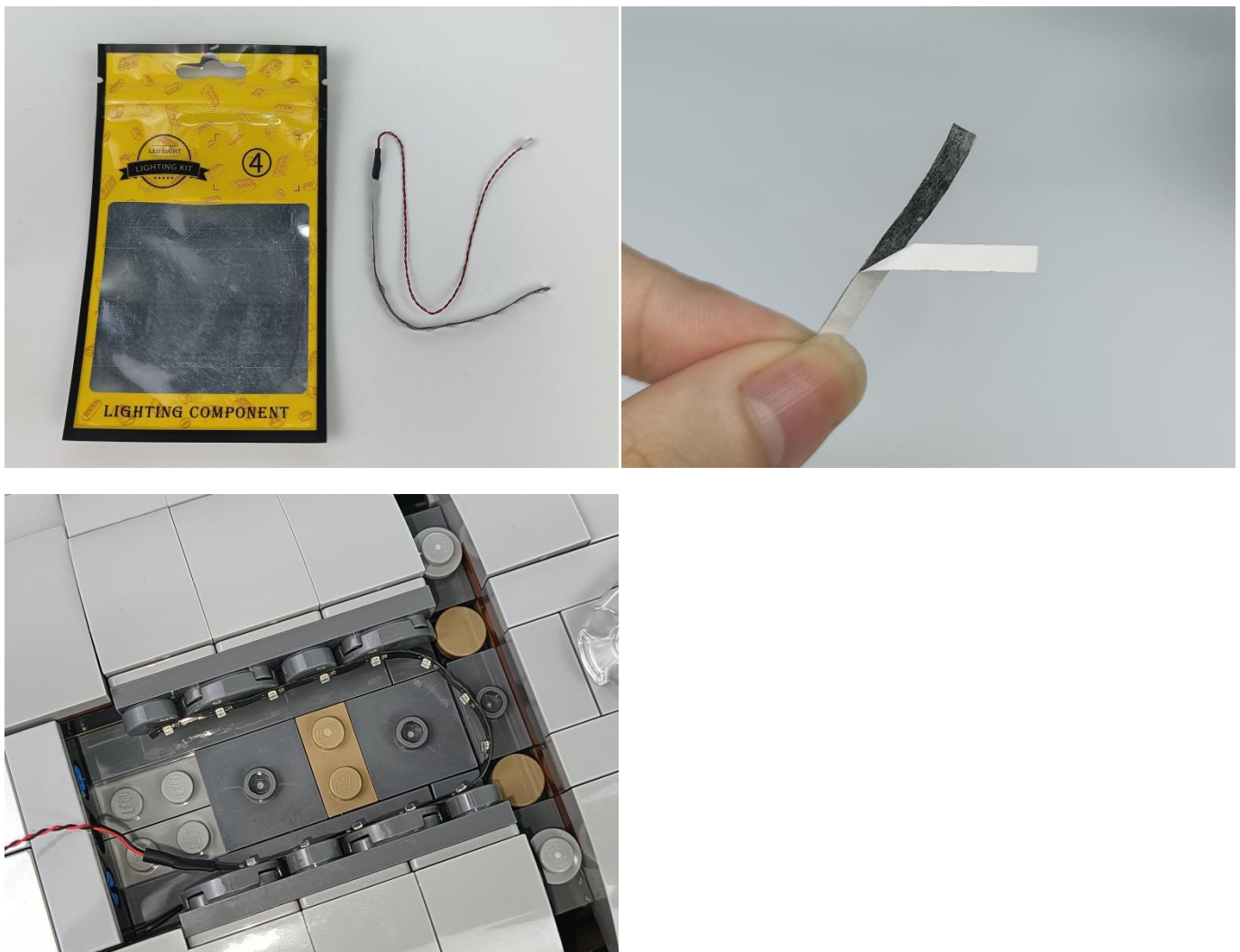


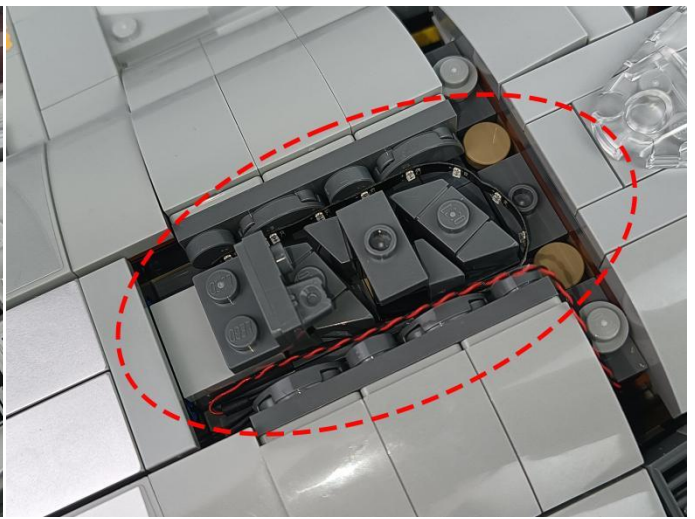
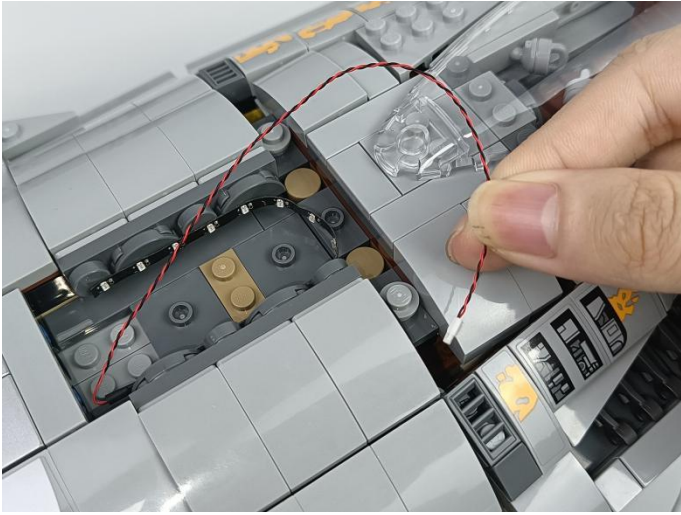


49

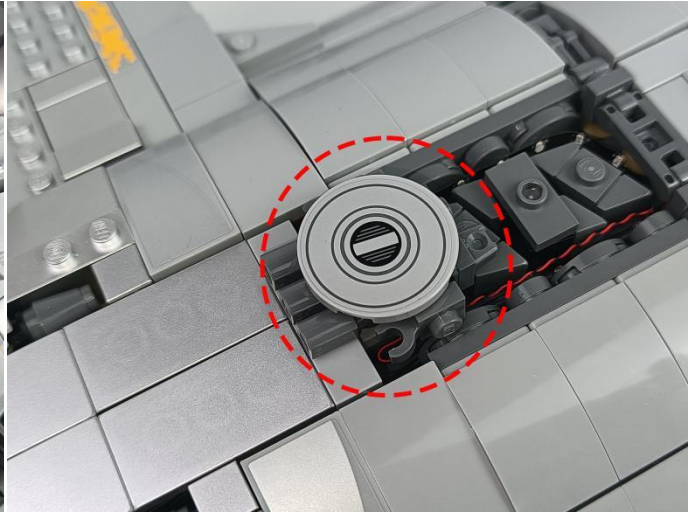
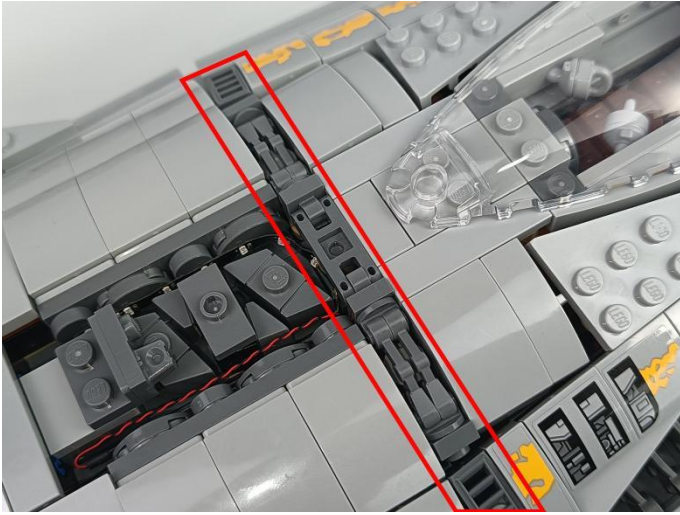


50





52



53



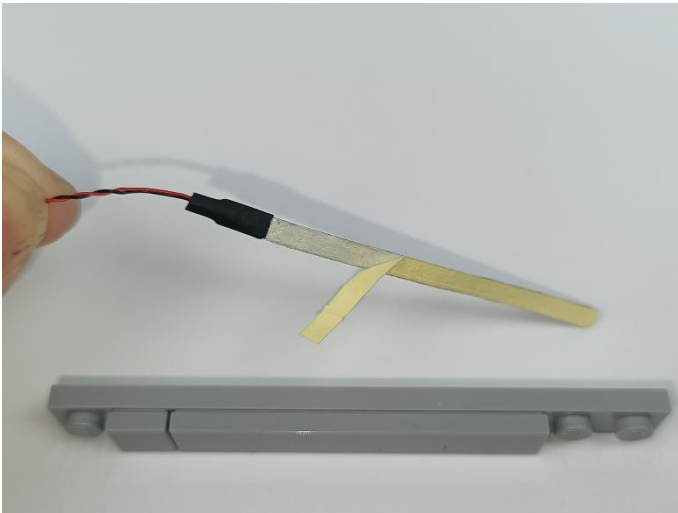
54



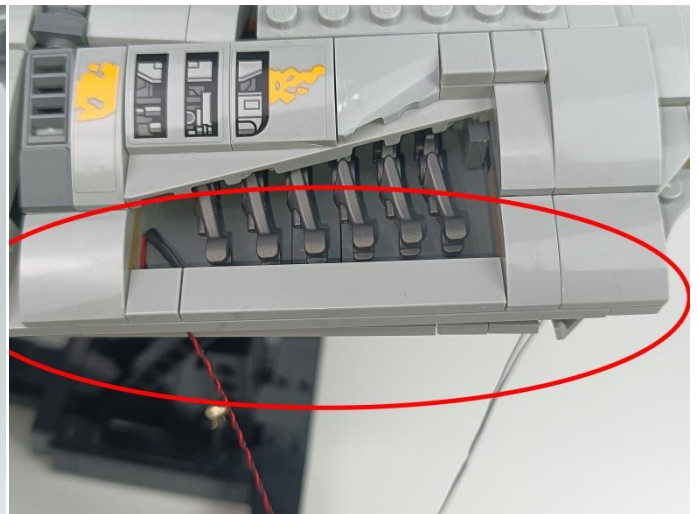
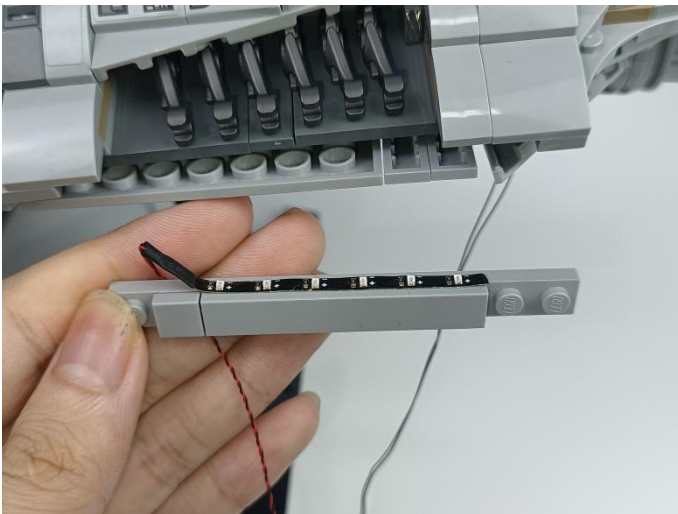
55



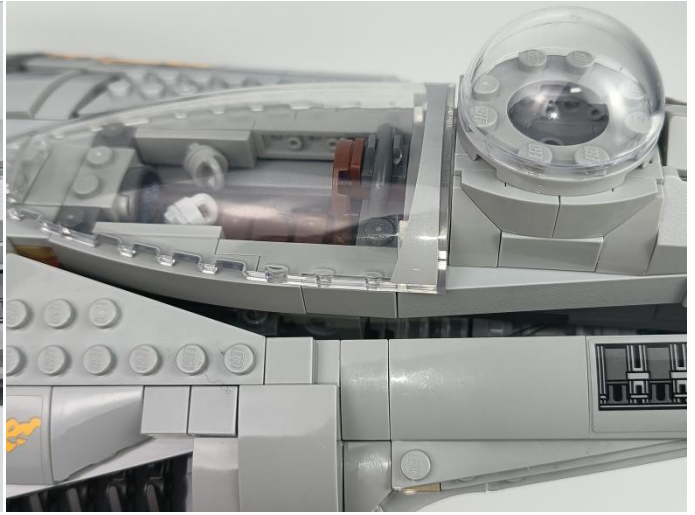
56



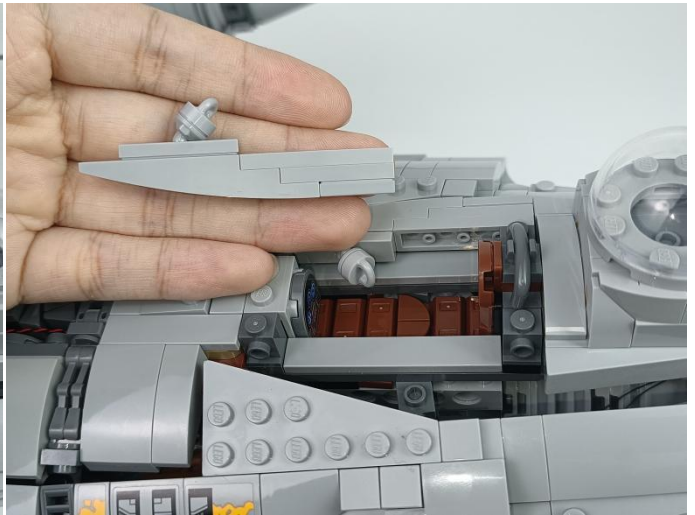
57



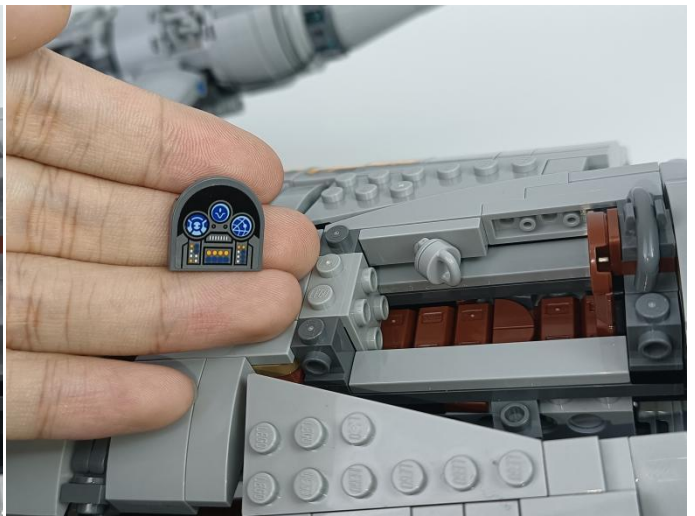
58



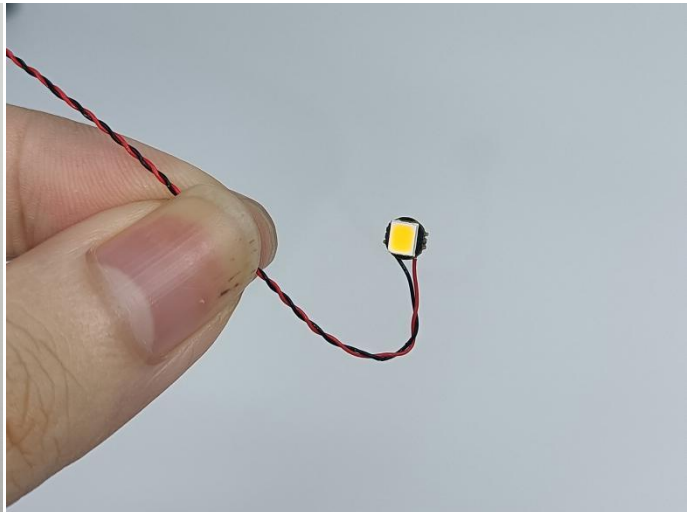
59



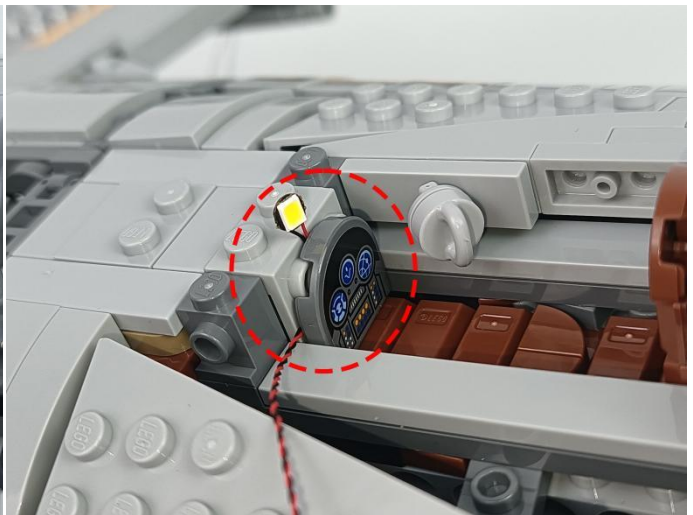
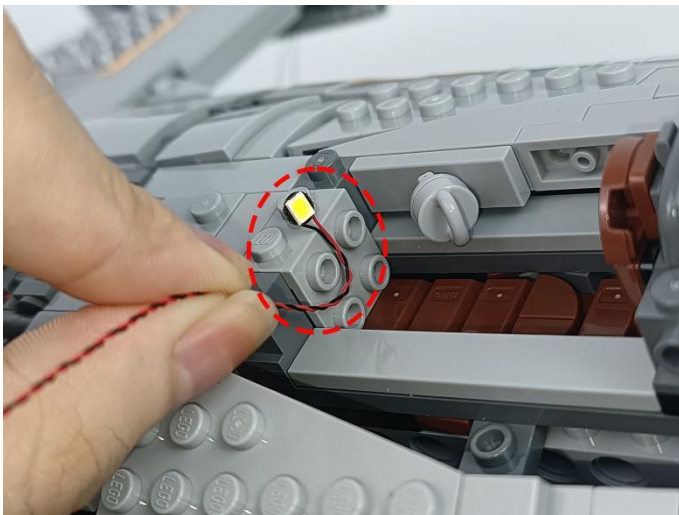
60



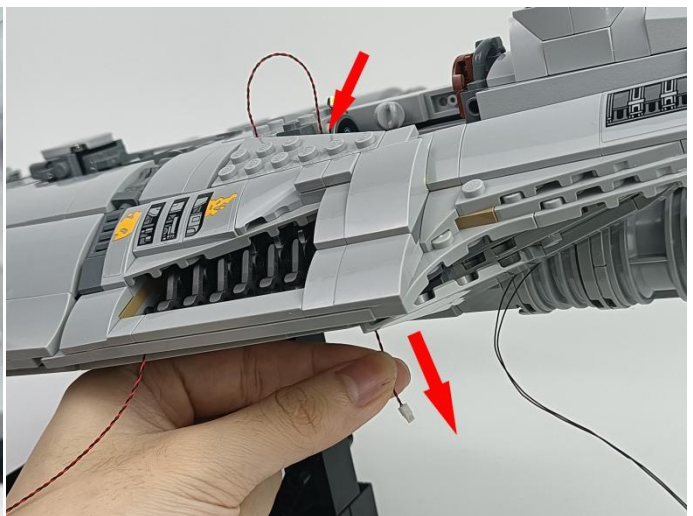
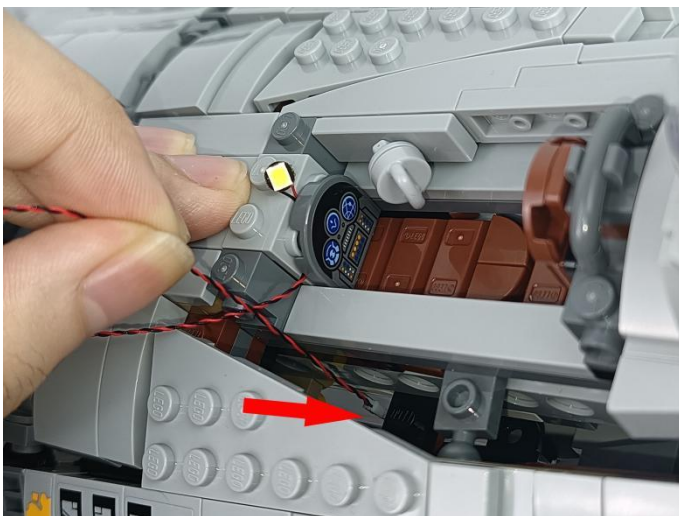
61



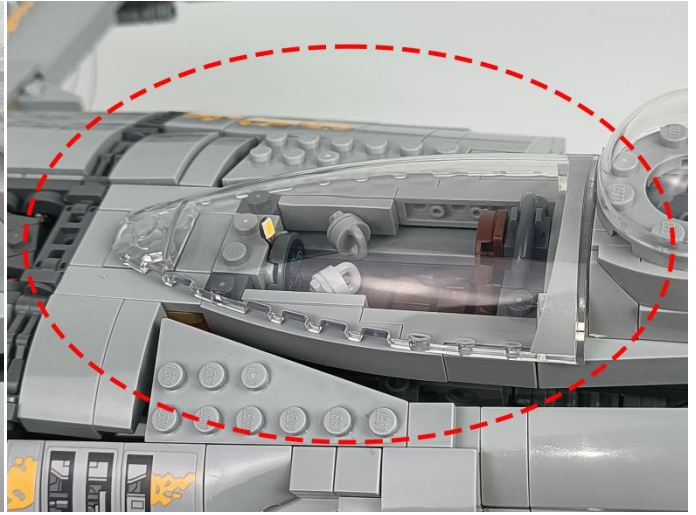
62



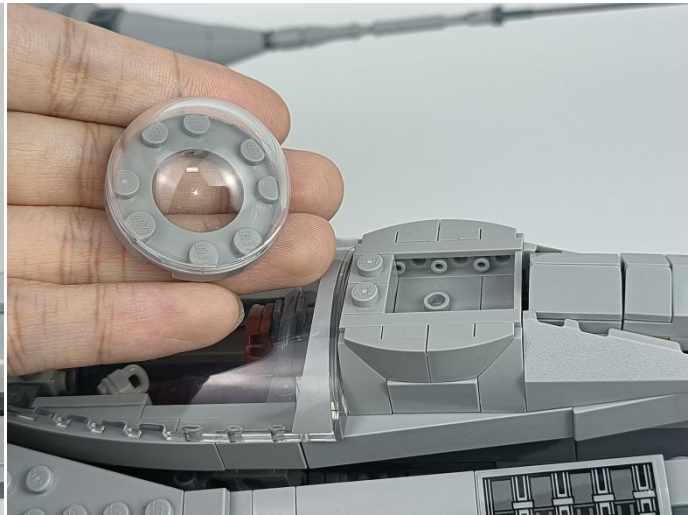
64



65



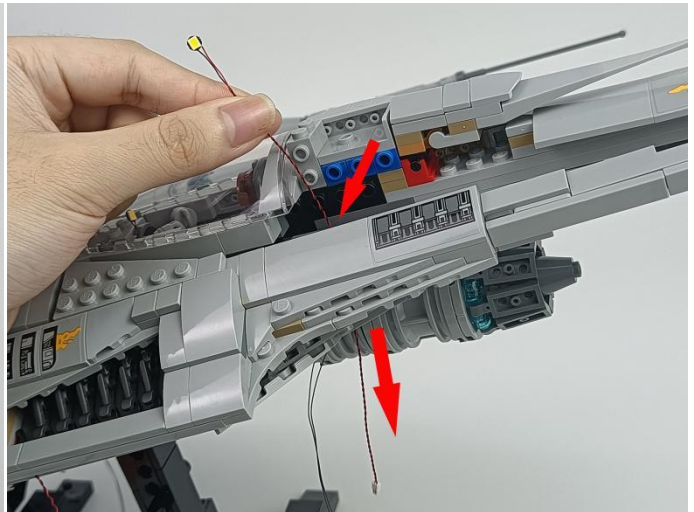
66



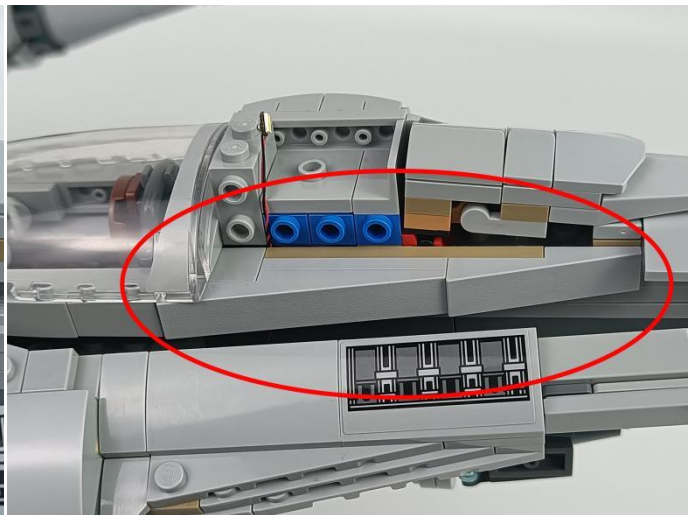
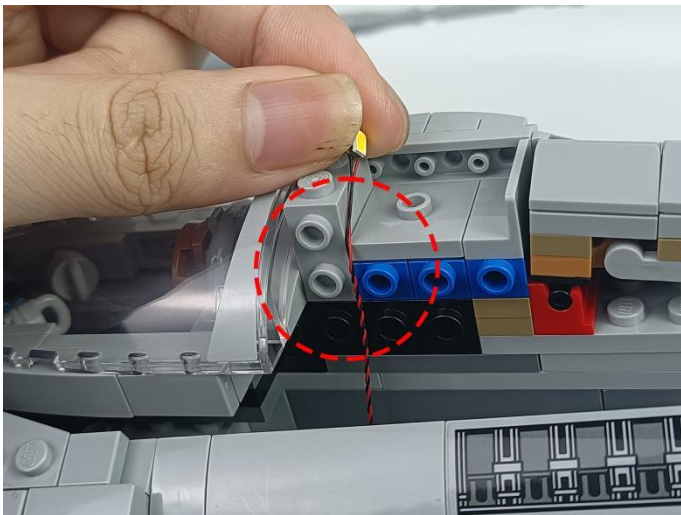
67



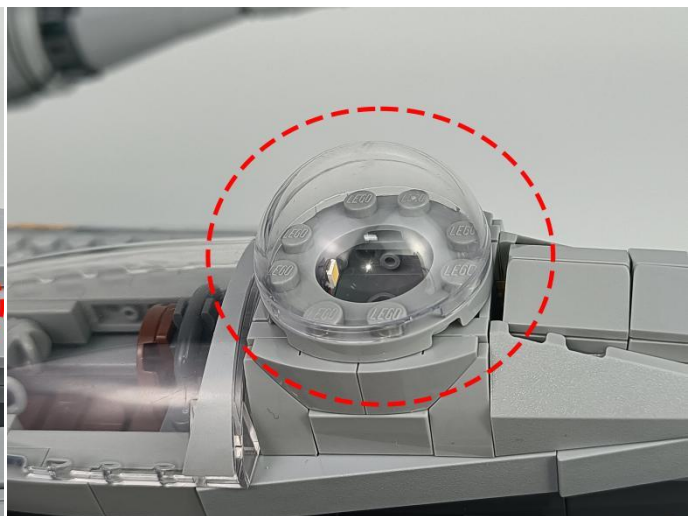
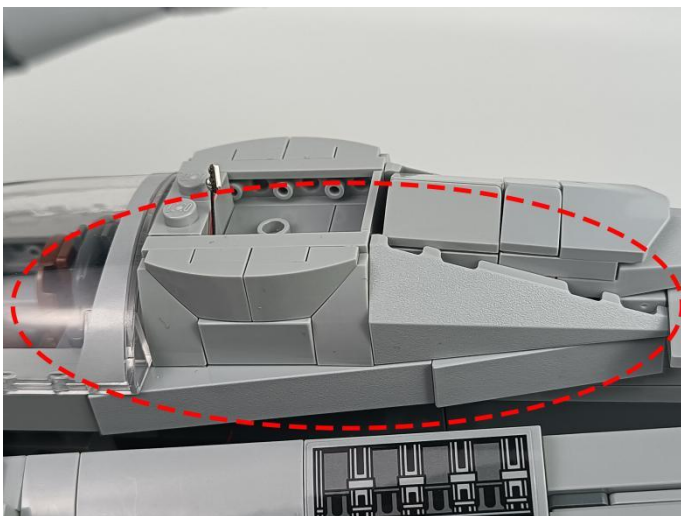
68



69



70



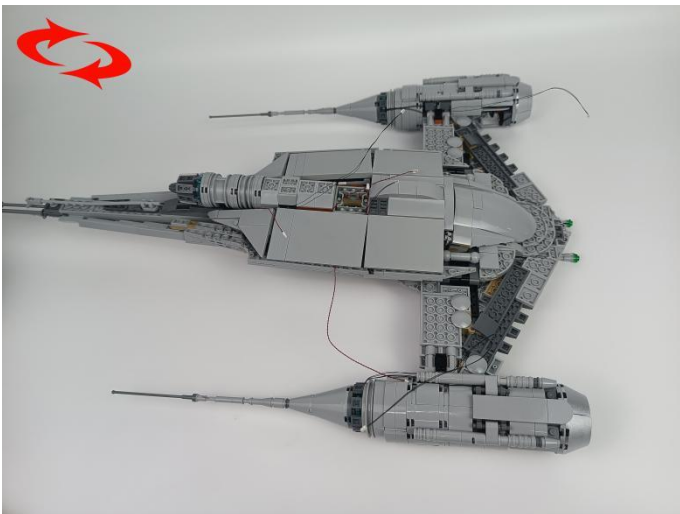
71



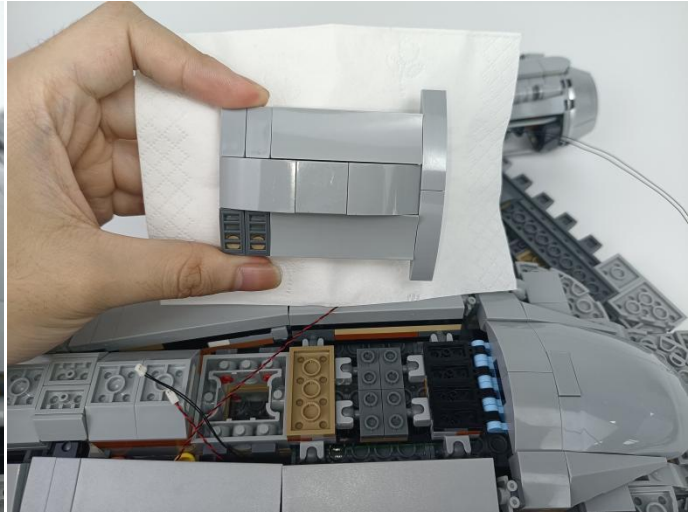
72



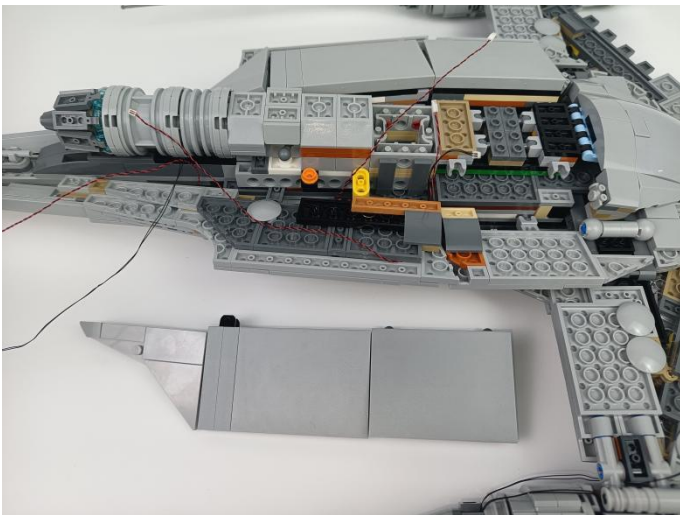
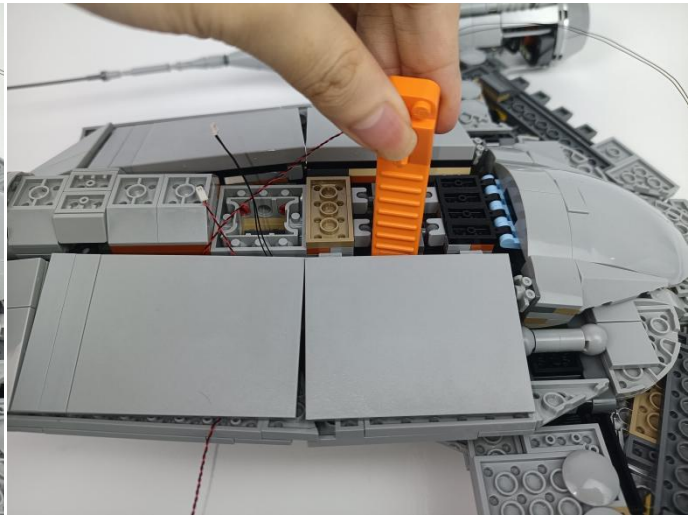
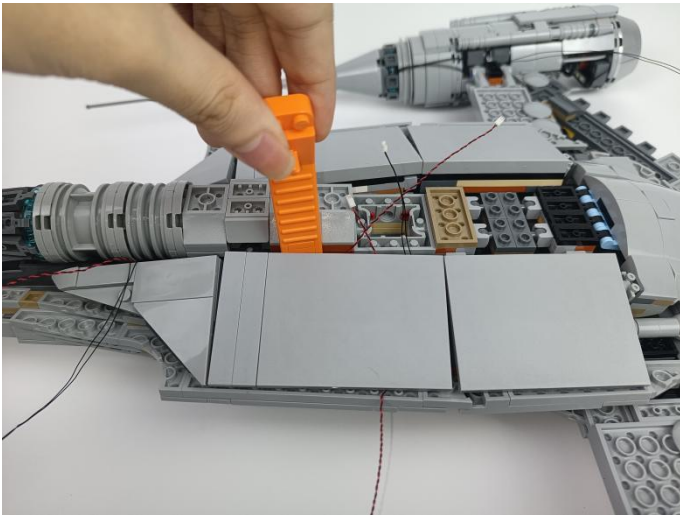
73



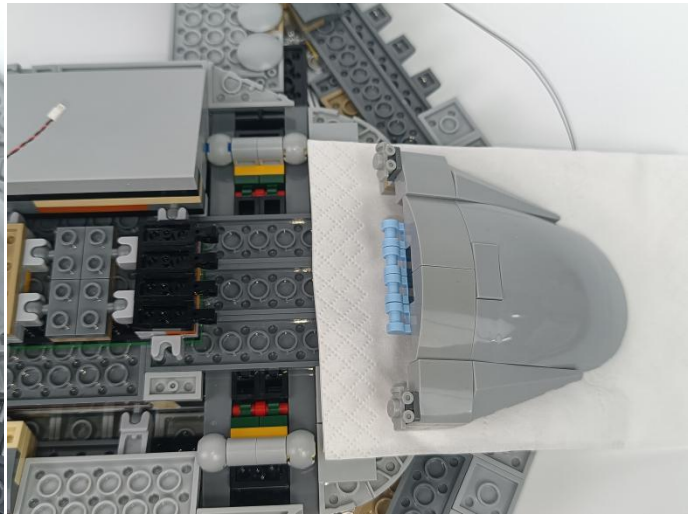
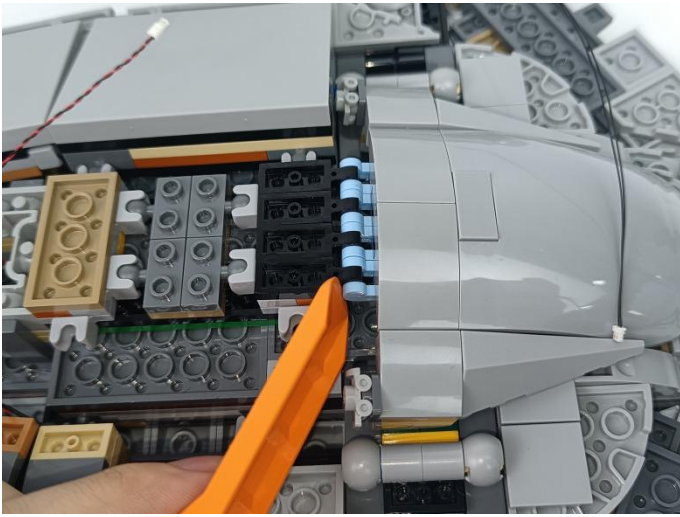
74



75



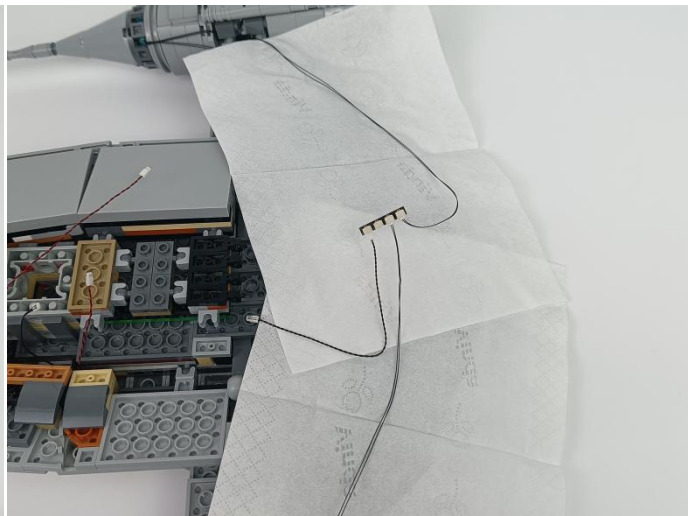
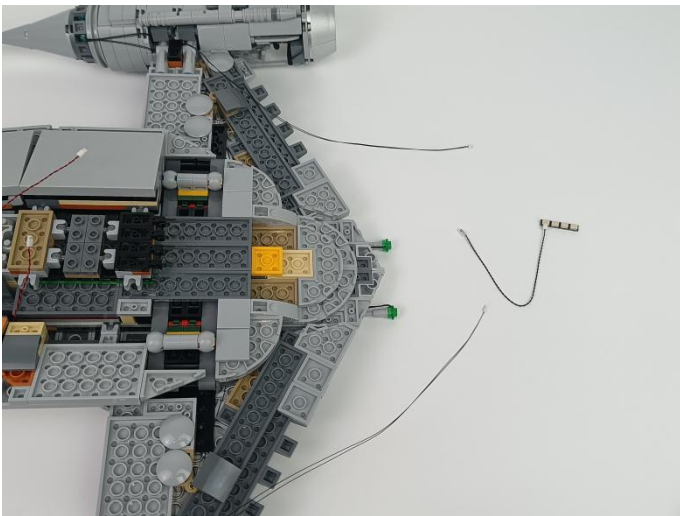
76



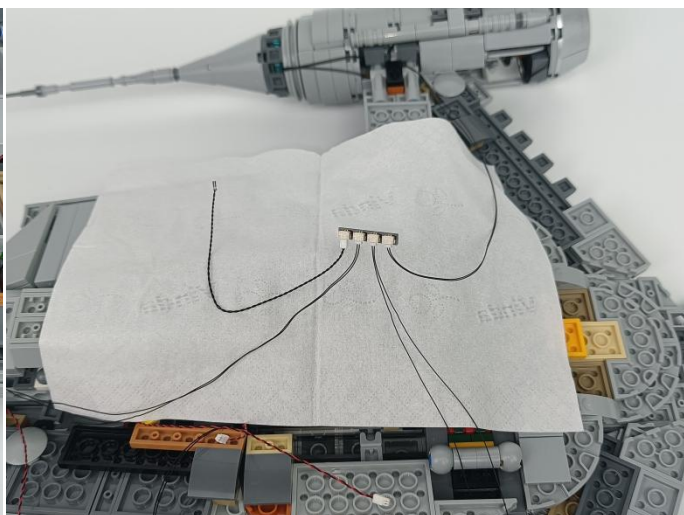
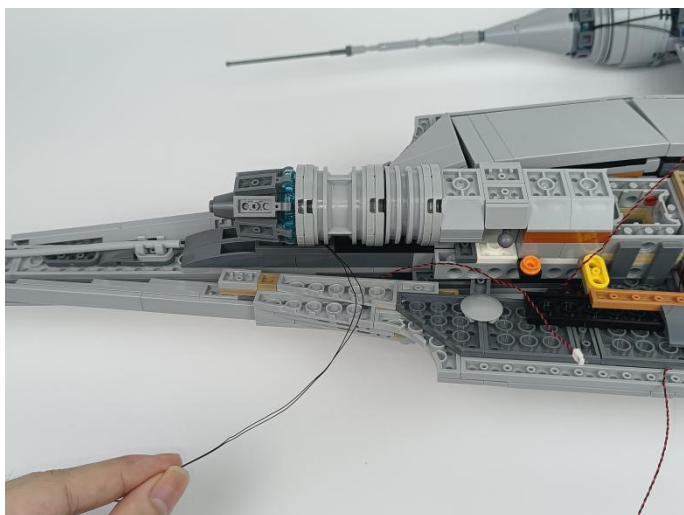
77



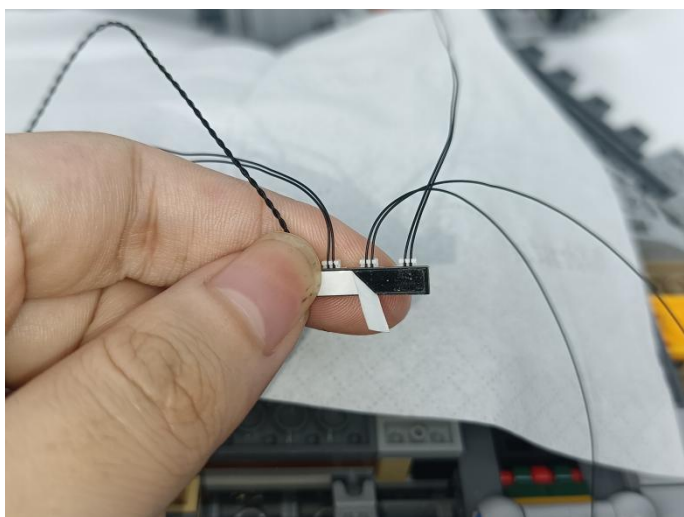
78

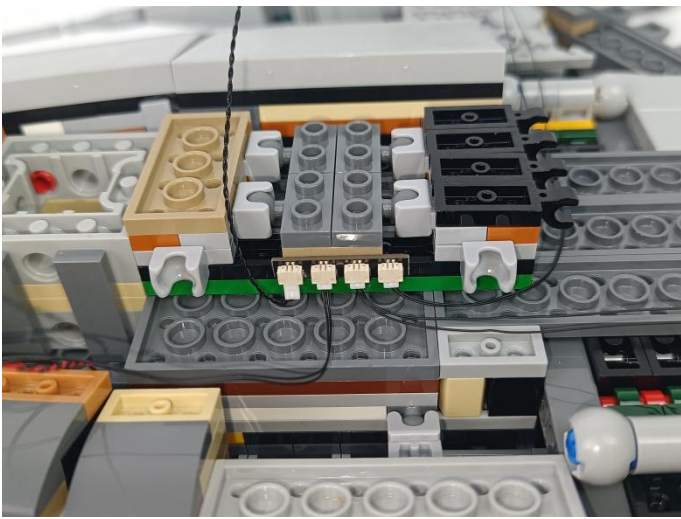
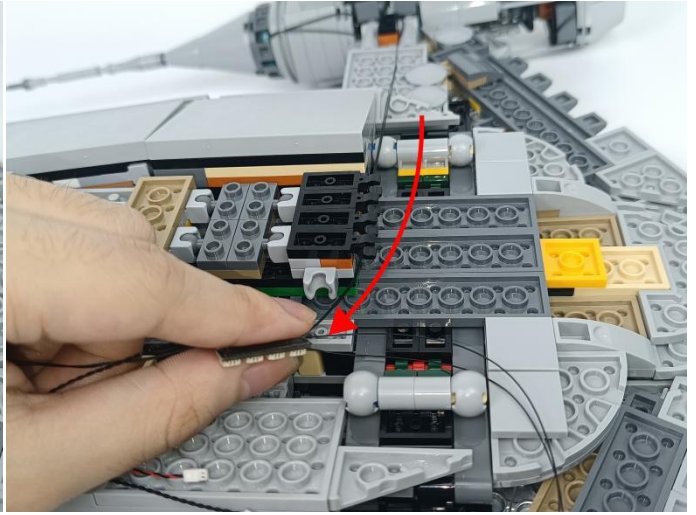
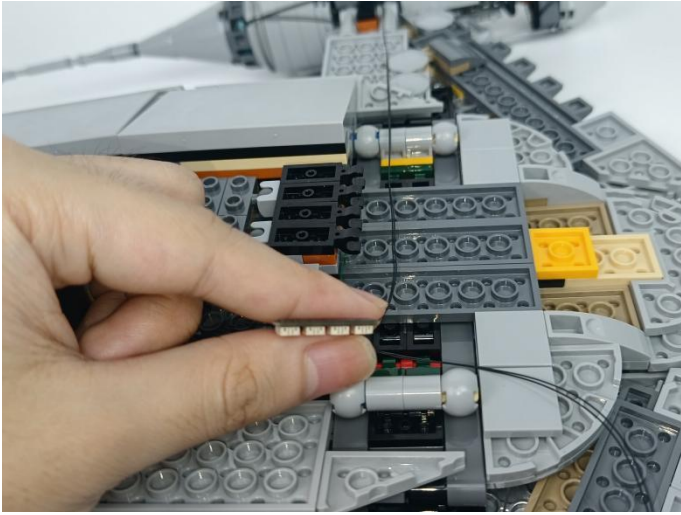


79

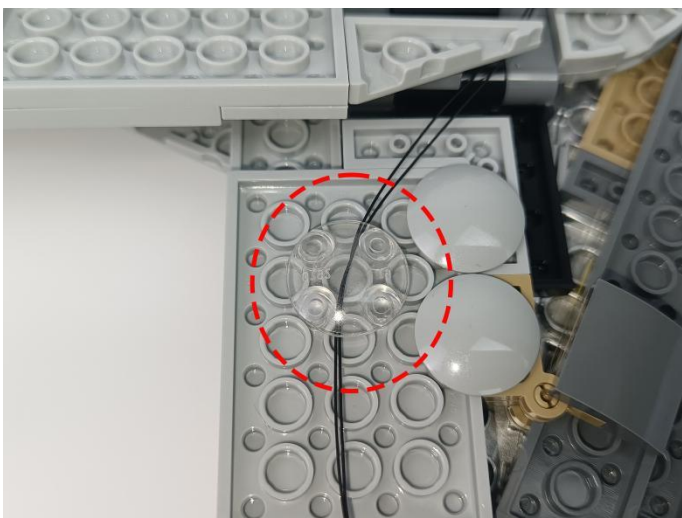
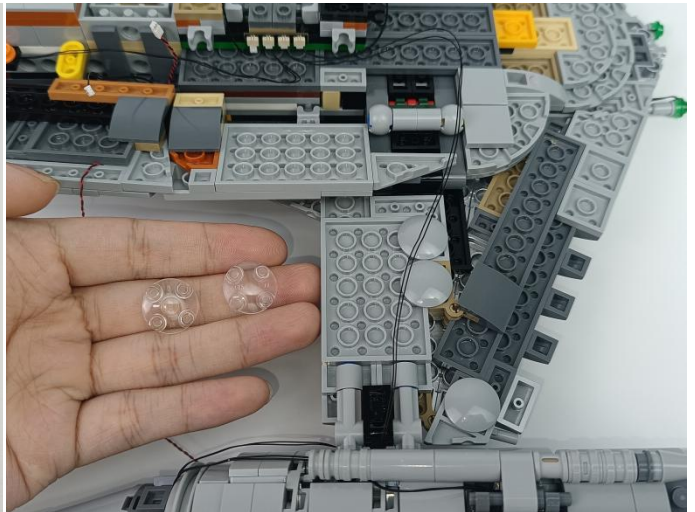


80

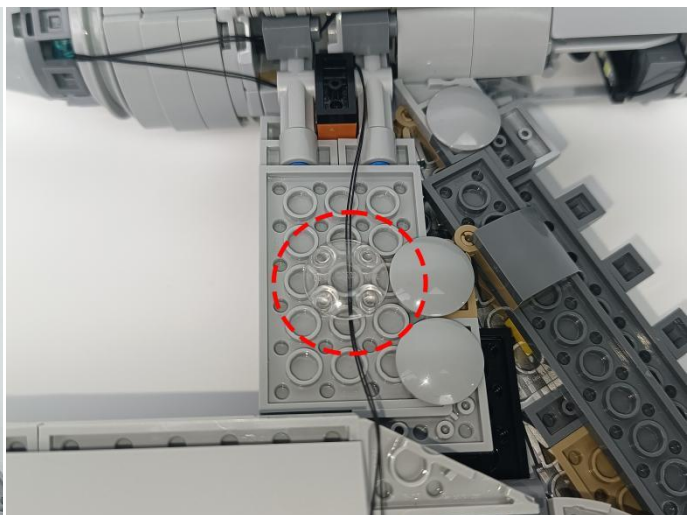
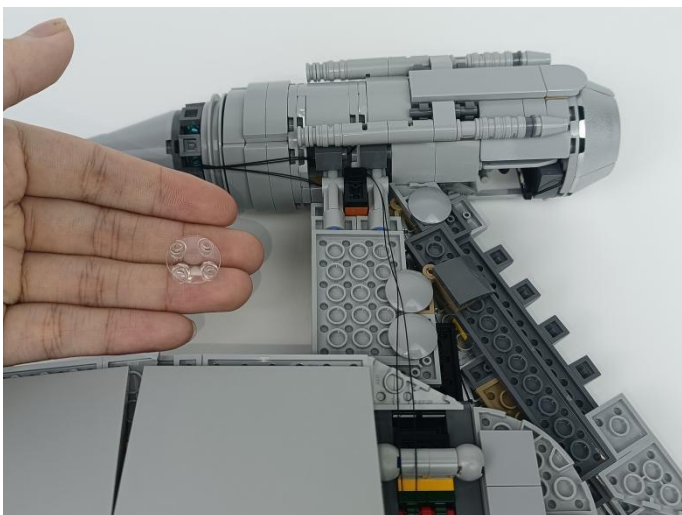




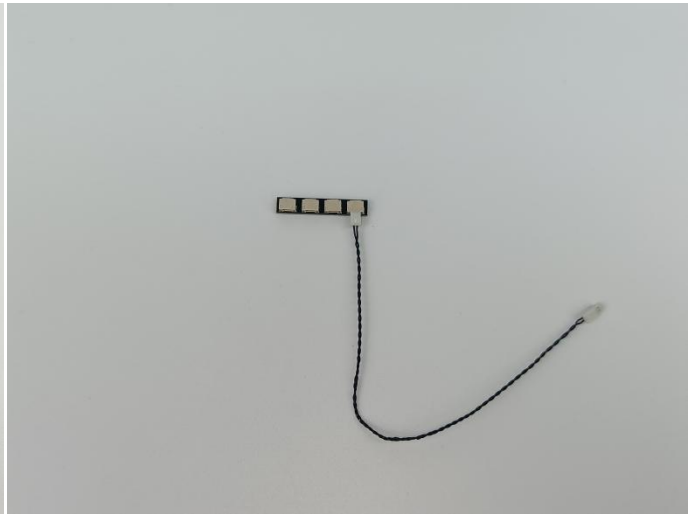
82



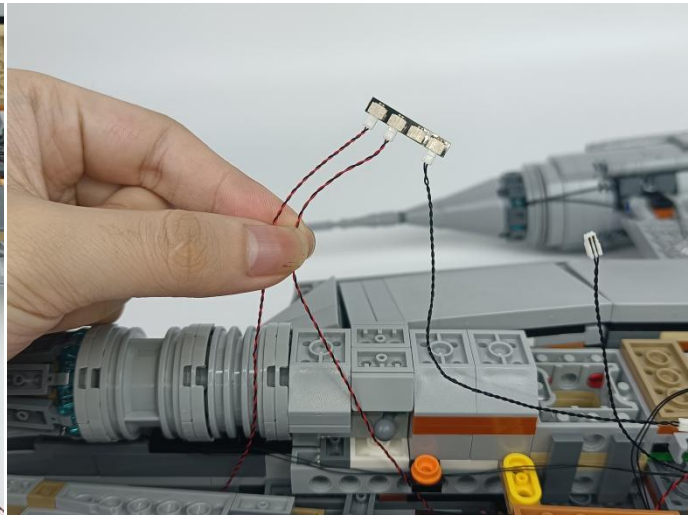
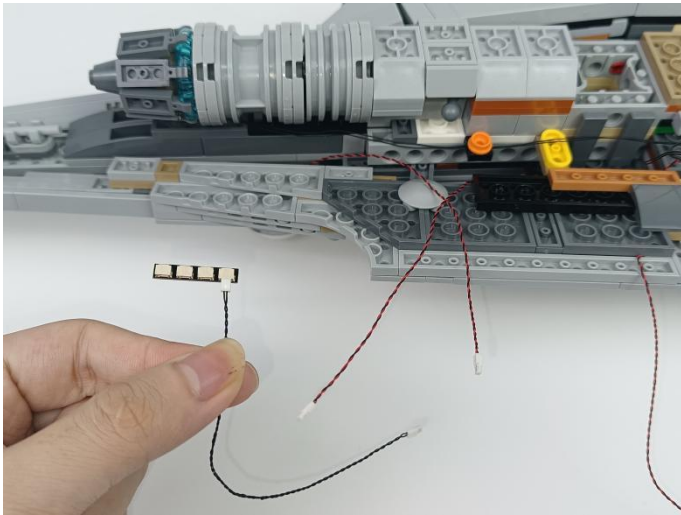
83



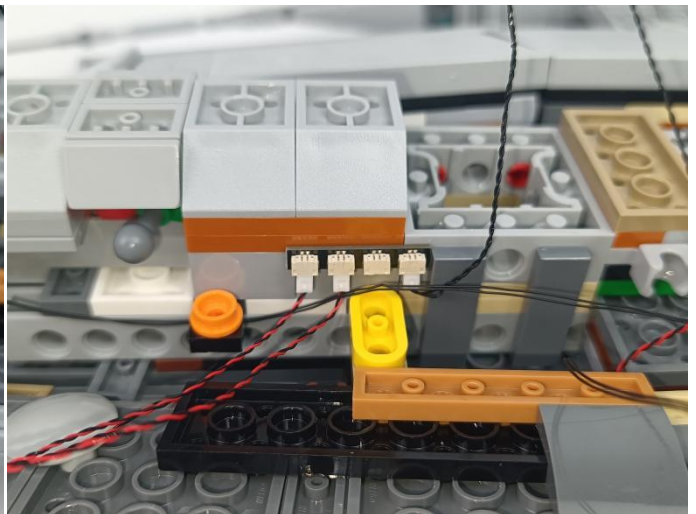
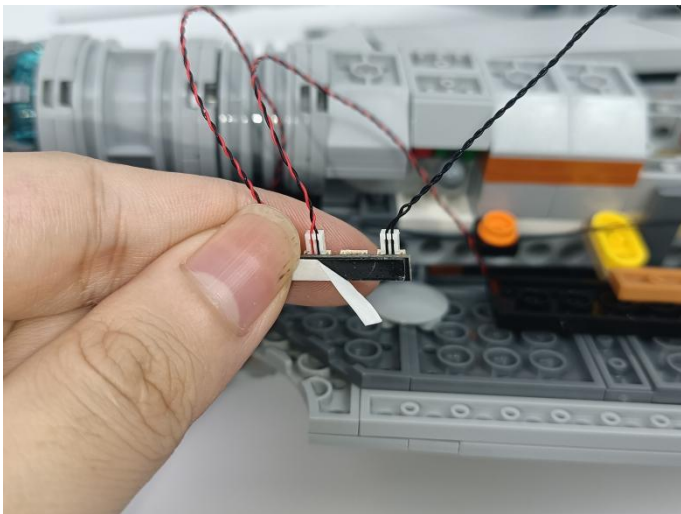
84



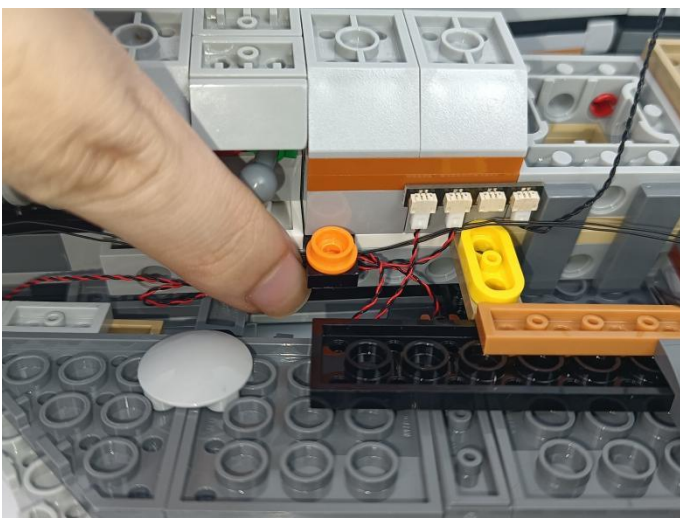
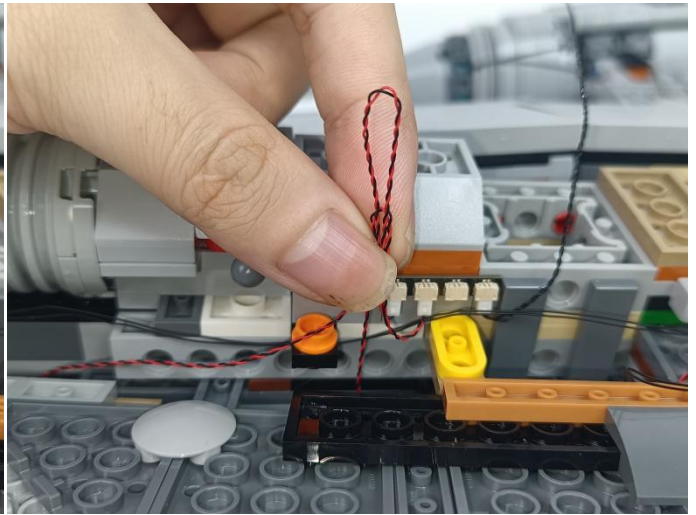
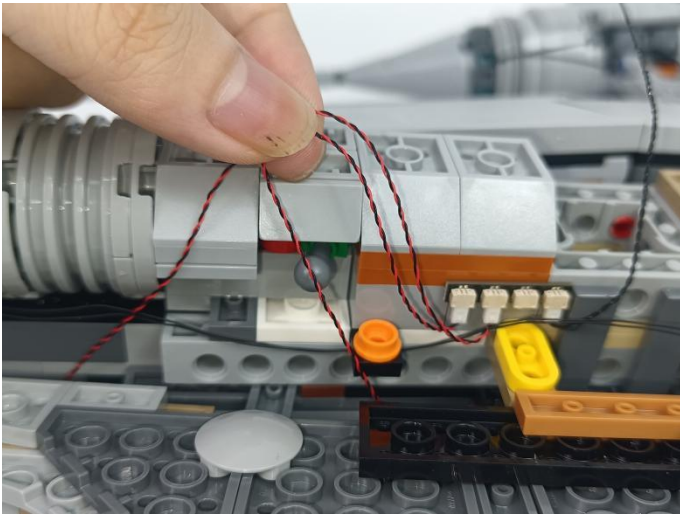
85



86



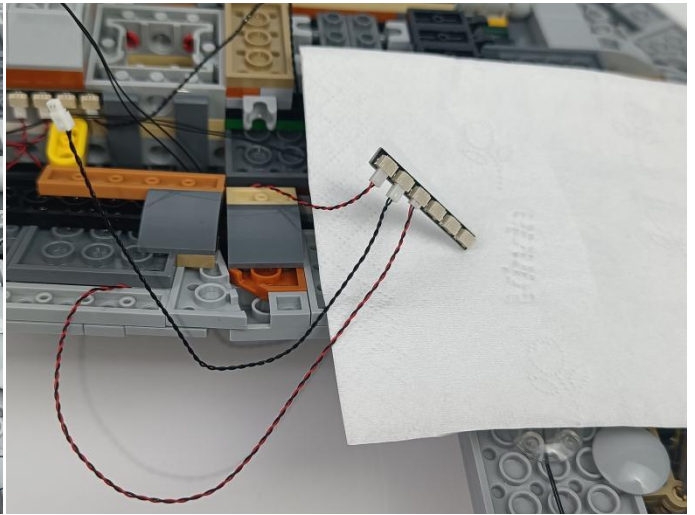
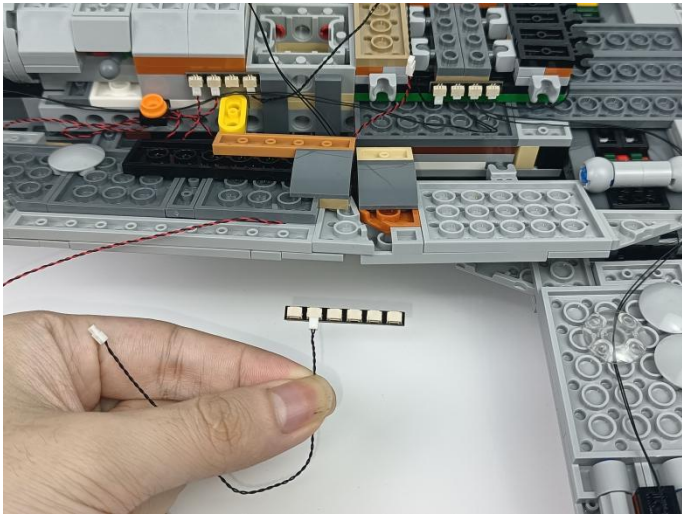
87



88



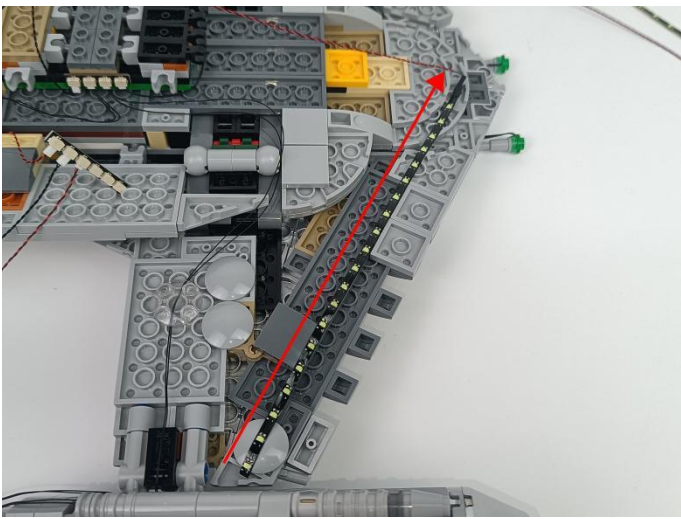
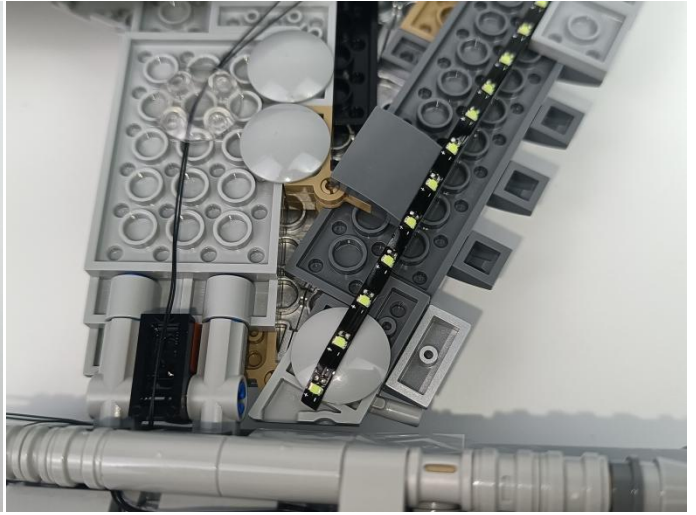
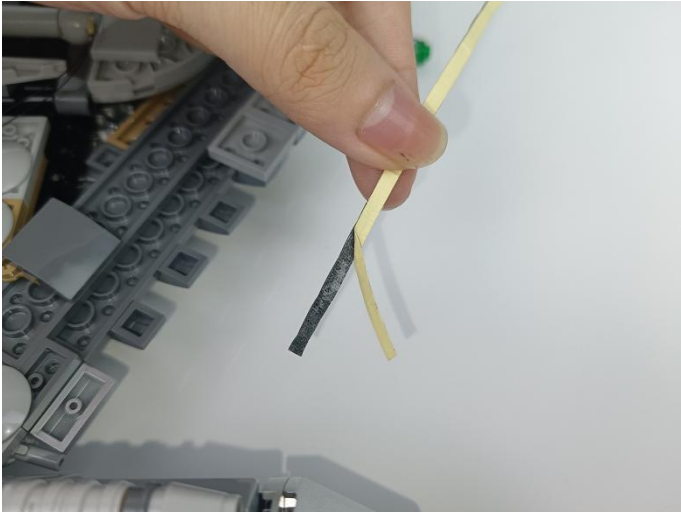
89



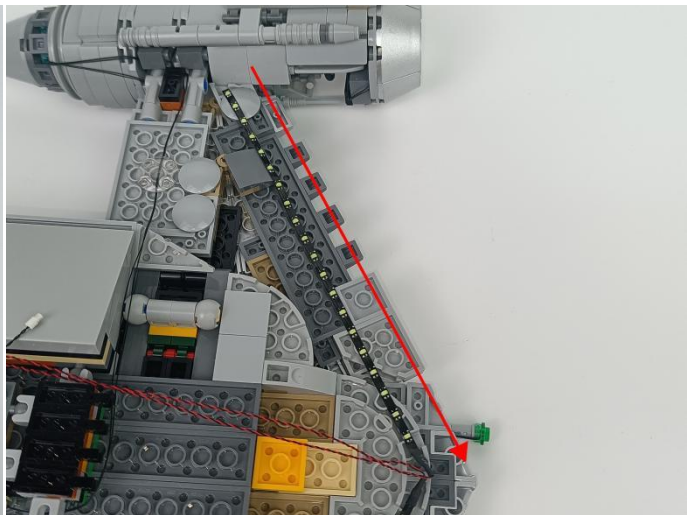
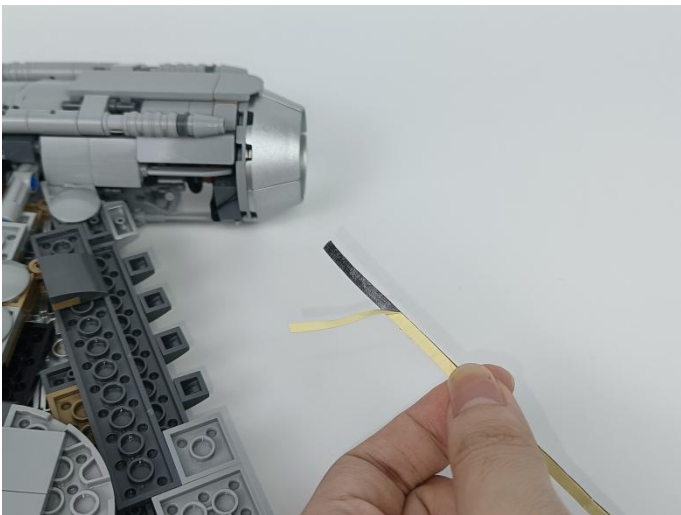
90



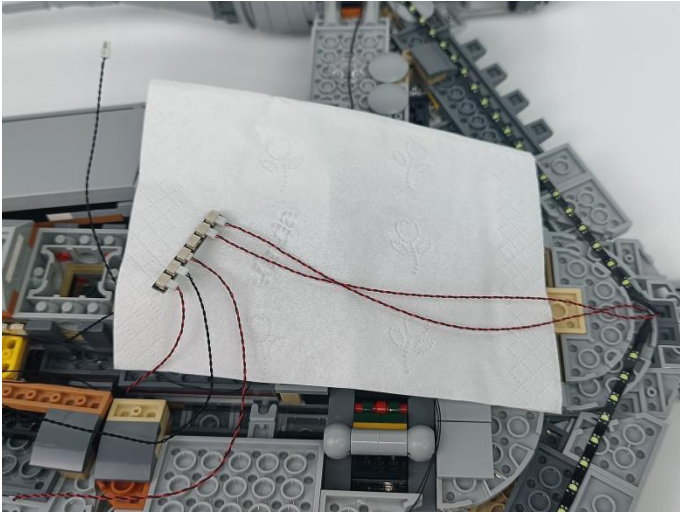
91



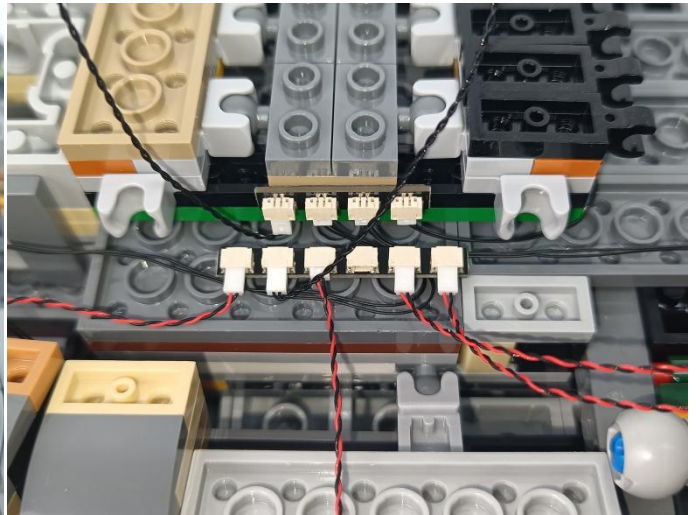
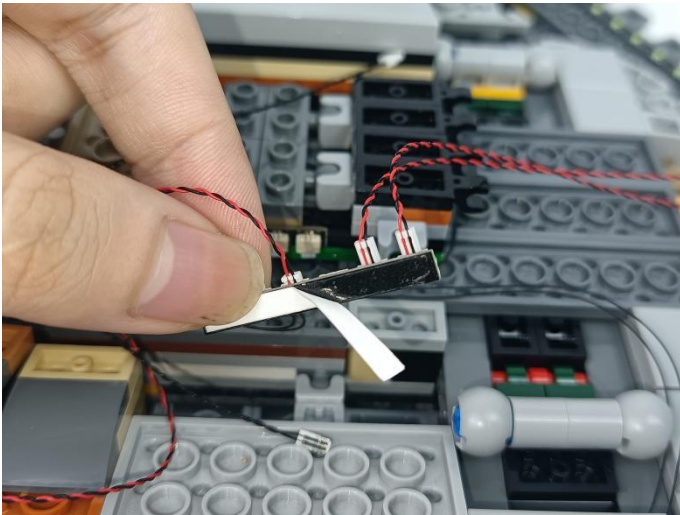
92



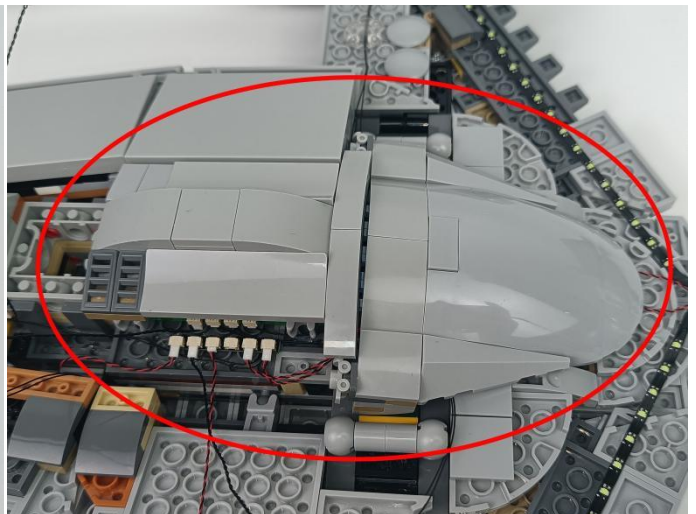
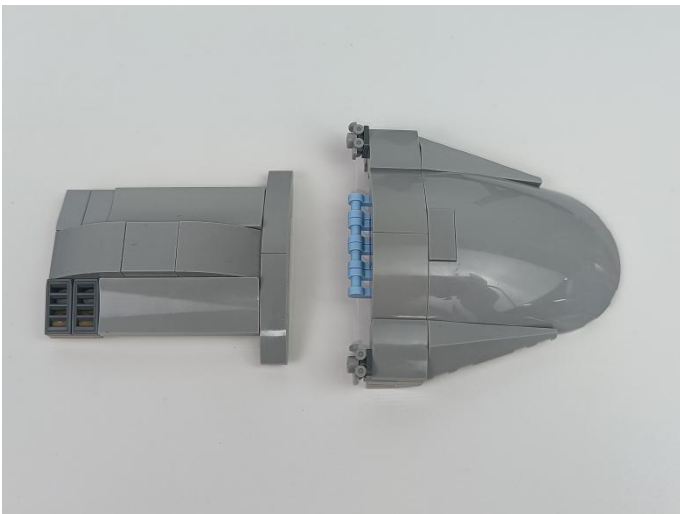
93

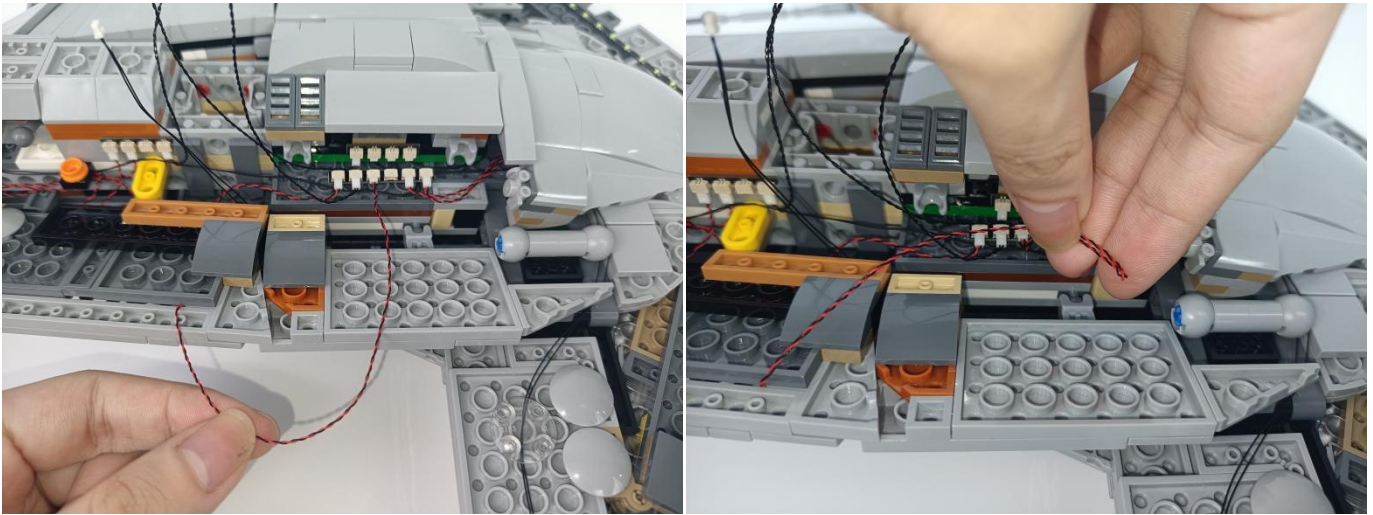


94



95





Remote Control Function Introduce

ON: All lights turn on sequentially.

OFF: All lights are off.

: A, B, C, D are turned on slowly in sequence.

: Breathing light mode.

: A and D the light is on and C and B flash alternately.

: A the light is on, B, C, D flow light effect I.

: A the light is on, B, C, D flow light effect II.

: Quickly open from A to D in turn.

: A, B, C, D flow light effect.

: A, B, C, D flash alternately.



A: Turn A on/off.

B: Turn B on/off.

C: Turn C on/off.

D: Turn D on/off.

↑: Increase frequency.

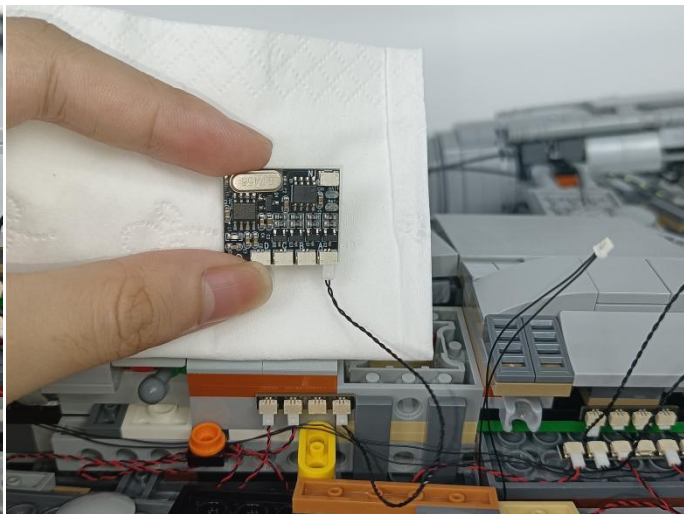
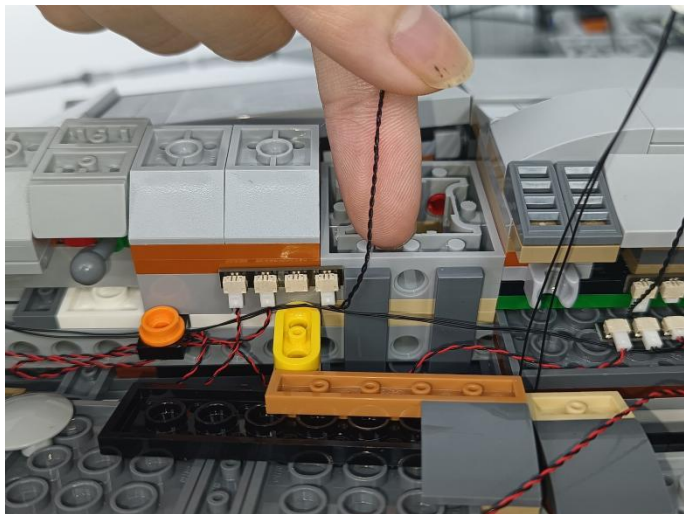
↓: Decrease frequency.

+: Brightness+: Increases brightness

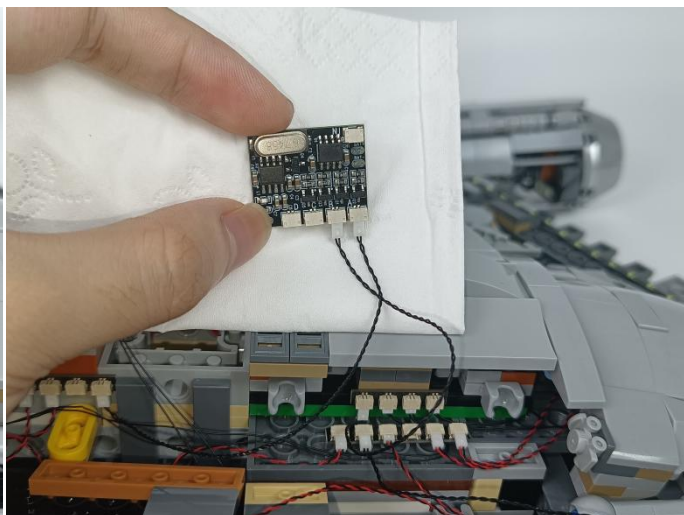
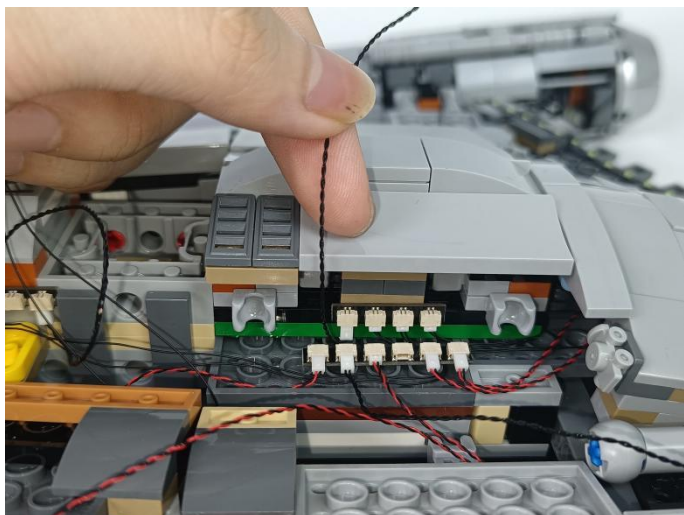
***-:** Brightness+: Increases brightness



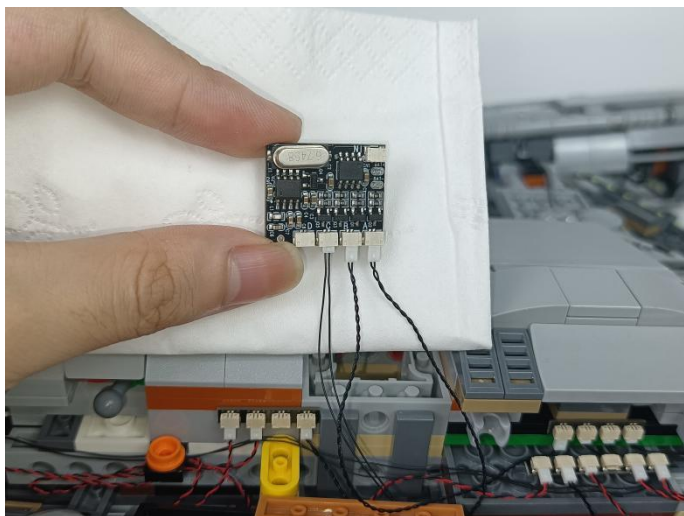
98



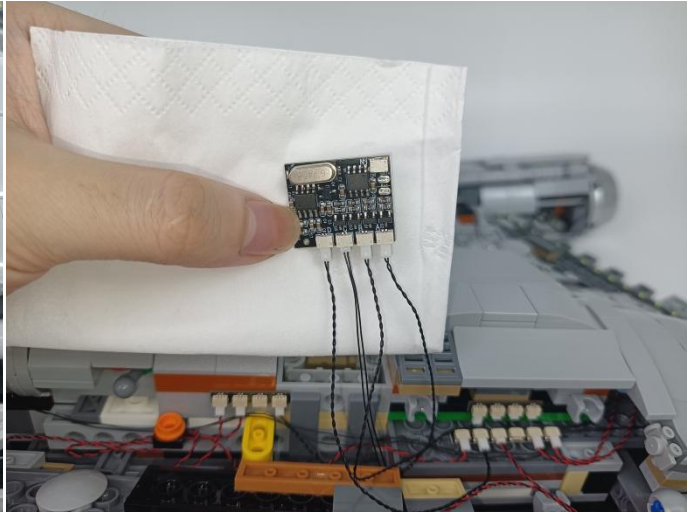
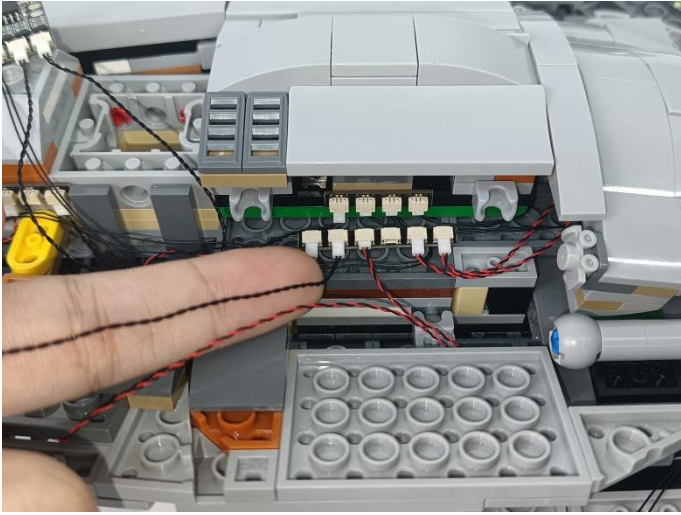
99



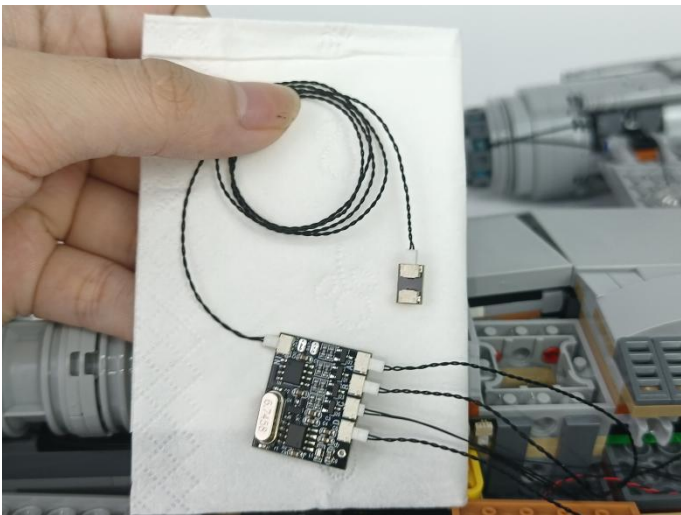
100



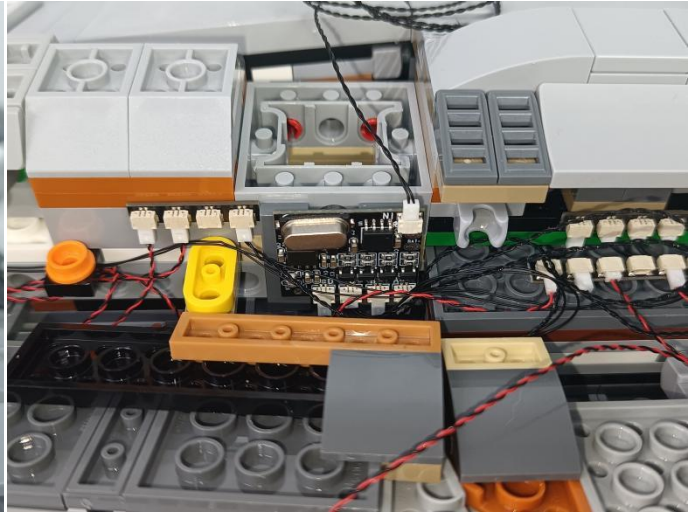
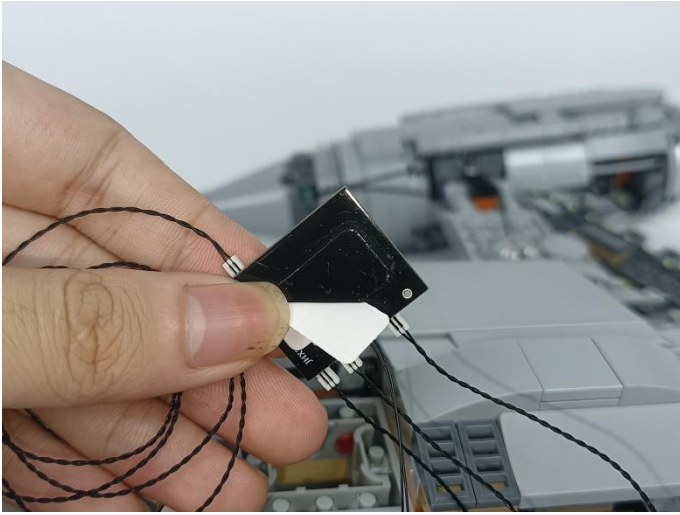
101



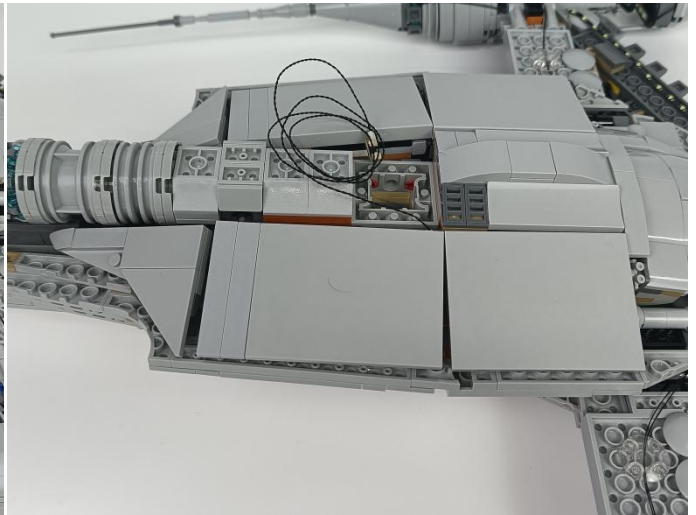
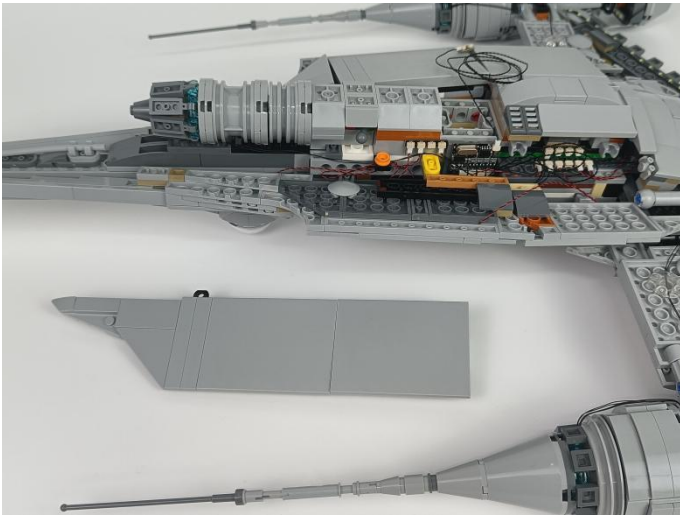
102



103

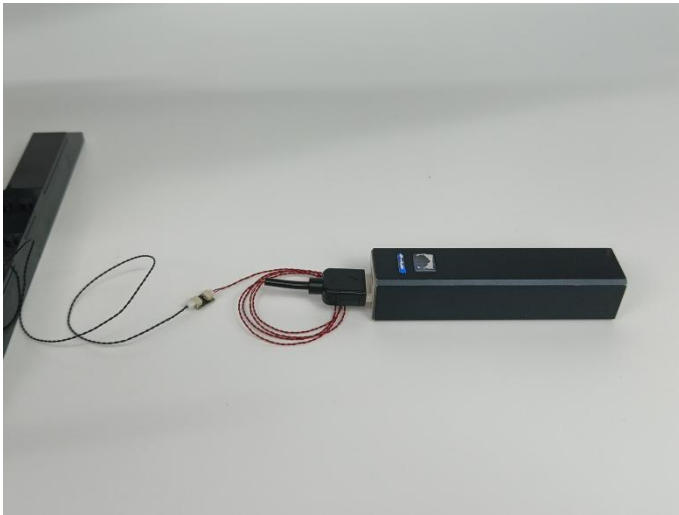
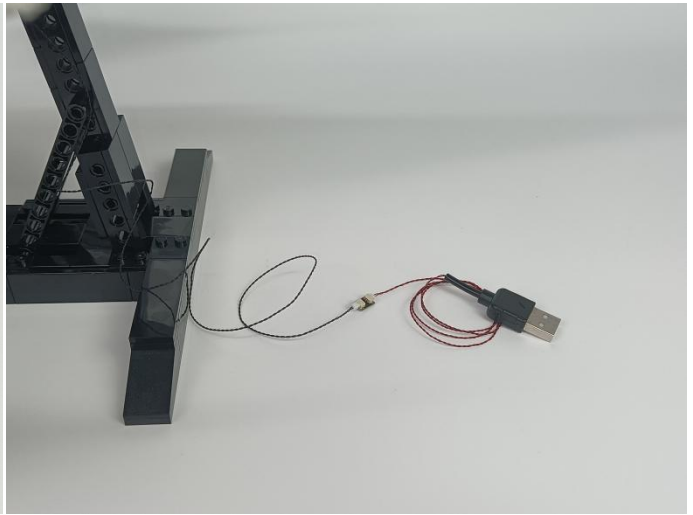


104



105





Remote Control Function Introduce

ON: All lights turn on sequentially.

OFF: All lights are off.

: A, B, C, D are turned on slowly in sequence.

: Breathing light mode.

: A and D the light is on and C and B flash alternately.

: A the light is on, B, C, D flow light effect I.

: A the light is on, B, C, D flow light effect II.

: Quickly open from A to D in turn.

: A, B, C, D flow light effect.

: A, B, C, D flash alternately.



A: Turn A on/off.

B: Turn B on/off.

C: Turn C on/off.

D: Turn D on/off.

↑: Increase frequency.

↓: Decrease frequency.

+: Brightness+: Increases brightness

***-**: Brightness-: Increases brightness



108



109



Good job, you've done all the installation steps, power it up and enjoy your work.



The battery box can also power the set. If it is necessary to change the power supply , prepare three aaa batteries, install them in the battery box, turn on the switch on the battery box, remove the plug of the usb power cable from the socket of the expansion board,plug the plug of the battery box to the same socket in the expansion board to power the suit as well.

THANKS

Tips

If you encounter any installation problems please contact the seller, we will be happy to help you solve!