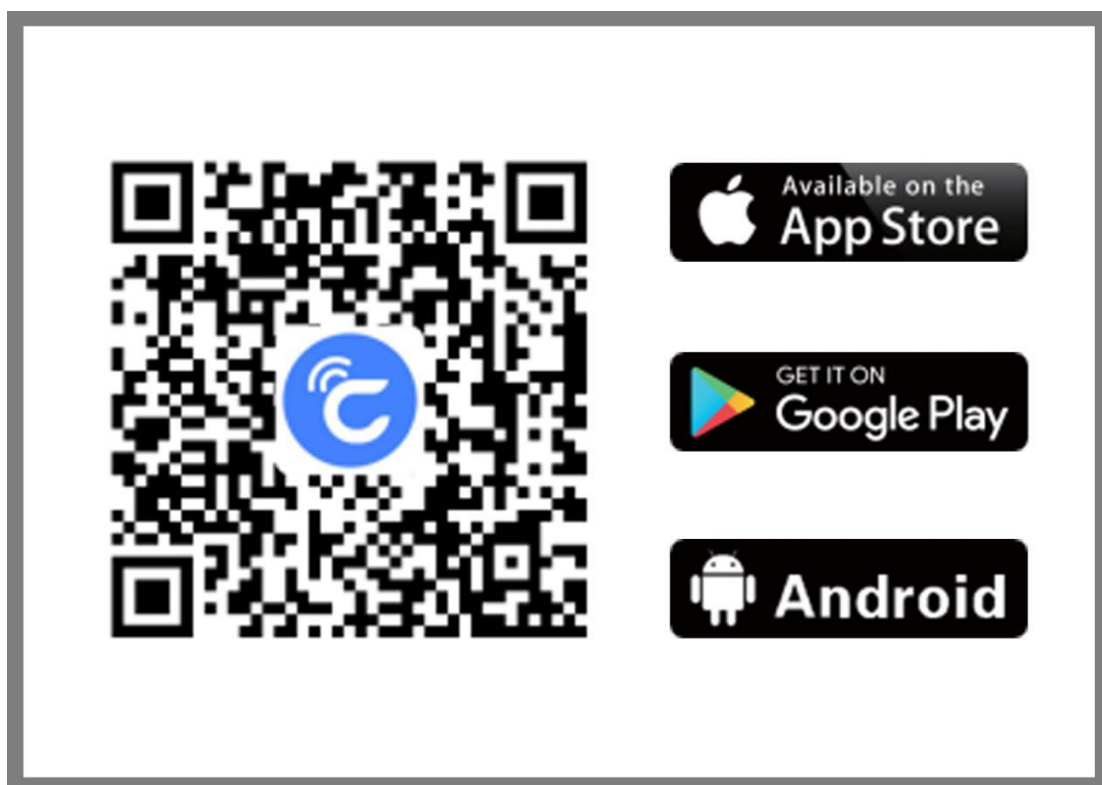


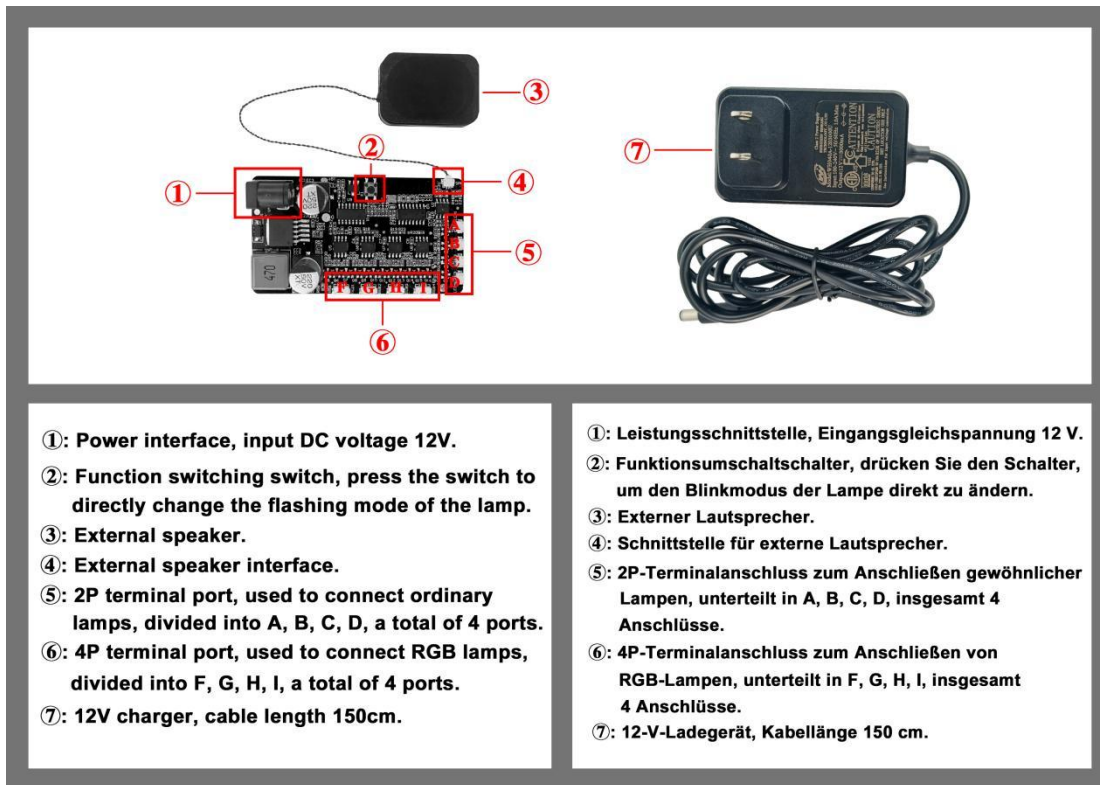
APP module usage tutorial

1.Registration and login

- ①: Search CozyLife in the App Store , download and install it.
- ②: Or scan the QR code below to download and install directly.



2.Composition of the module



①: Power interface, input DC voltage 12V.

②: Function switching switch, press the switch to directly change the flashing mode of the lamp.

③: External speaker.

④: External speaker interface.

⑤: 2P terminal port, used to connect ordinary lamps, divided into A, B, C, D, a total of 4 ports.

⑥: 4P terminal port, used to connect RGB lamps, divided into F, G, H, I, a total of 4 ports.

⑦: 12V charger, cable length 150cm.

①: Leistungsschnittstelle, Eingangsgleichspannung 12 V.

②: Funktionsumschaltsschalter, drücken Sie den Schalter, um den Blinkmodus der Lampe direkt zu ändern.

③: Externer Lautsprecher.

④: Schnittstelle für externe Lautsprecher.

⑤: 2P-Terminalanschluss zum Anschließen gewöhnlicher Lampen, unterteilt in A, B, C, D, insgesamt 4 Anschlüsse.

⑥: 4P-Terminalanschluss zum Anschließen von RGB-Lampen, unterteilt in F, G, H, I, insgesamt 4 Anschlüsse.

⑦: 12-V-Ladegerät, Kabellänge 150 cm.

①: Power interface, input DC voltage 12V.

②: Function switching switch, press the switch to directly change the flashing mode of the lamp.

③: External speaker.

④: External speaker interface.

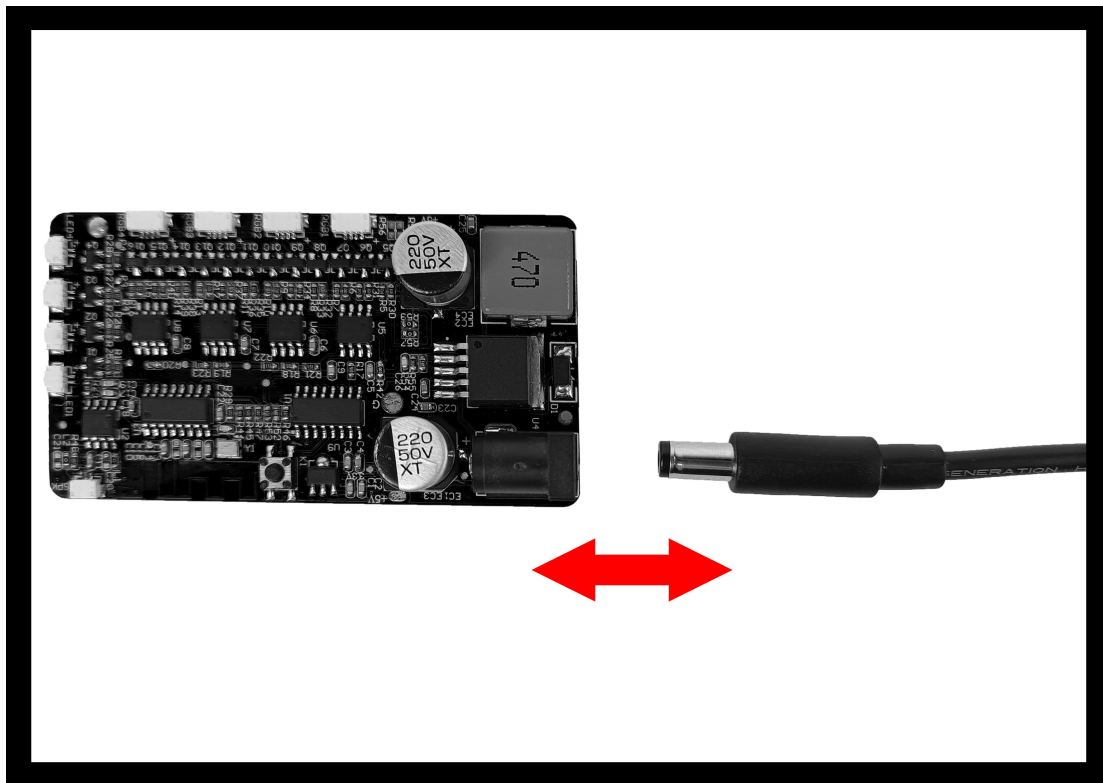
⑤: 2P terminal port, used to connect ordinary lamps, divided into A, B, C, D, a total of 4 ports.

⑥: 4P terminal port, used to connect RGB lamps, divided into F, G, H, I, a total of 4 ports.

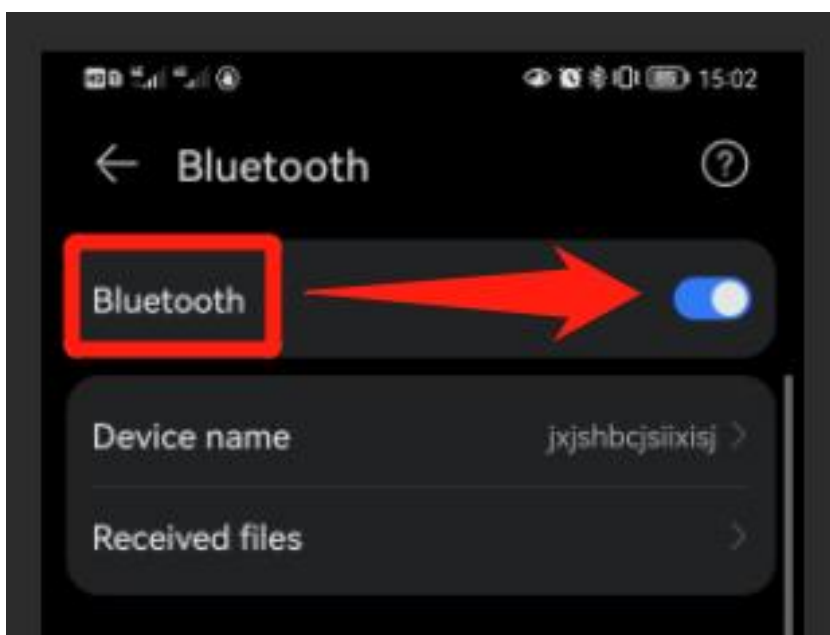
⑦: 12V charger, cable length 150cm.

3.Connect the device

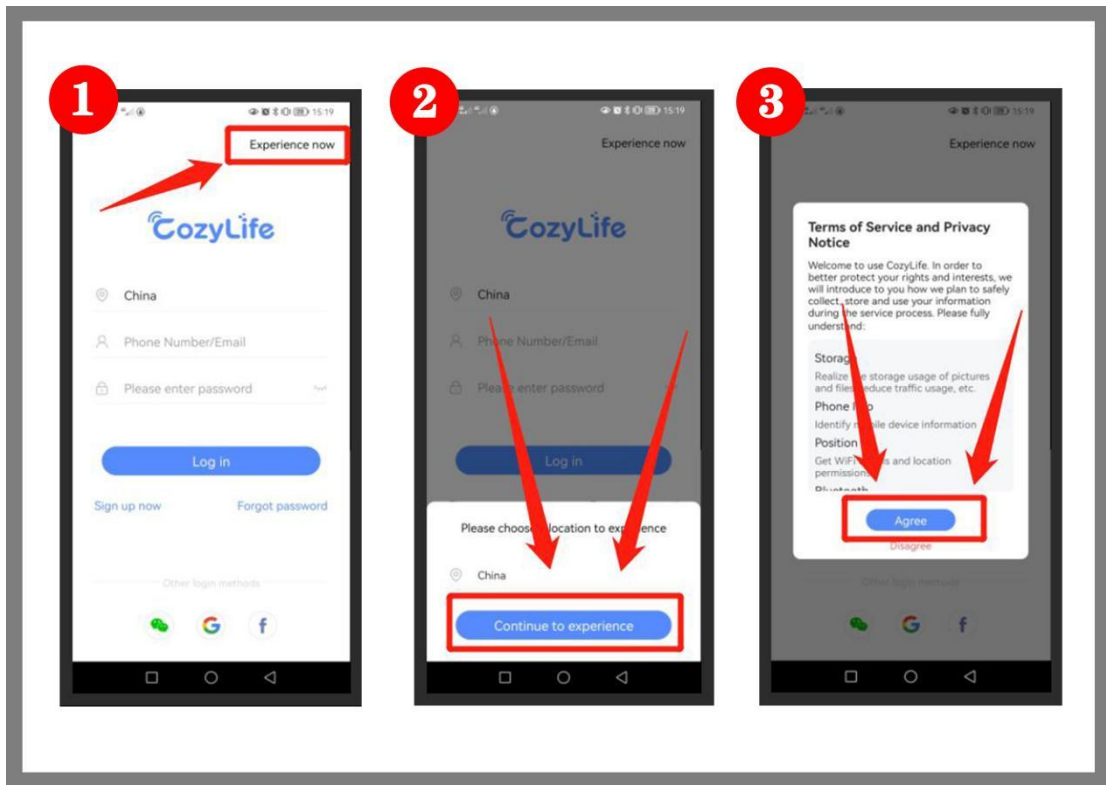
①: When connecting the APP module for the first time, it needs to be powered on three times to reset the module (need to disconnect the connection part in the figure), and the module is in matching mode after the lights start to flash.



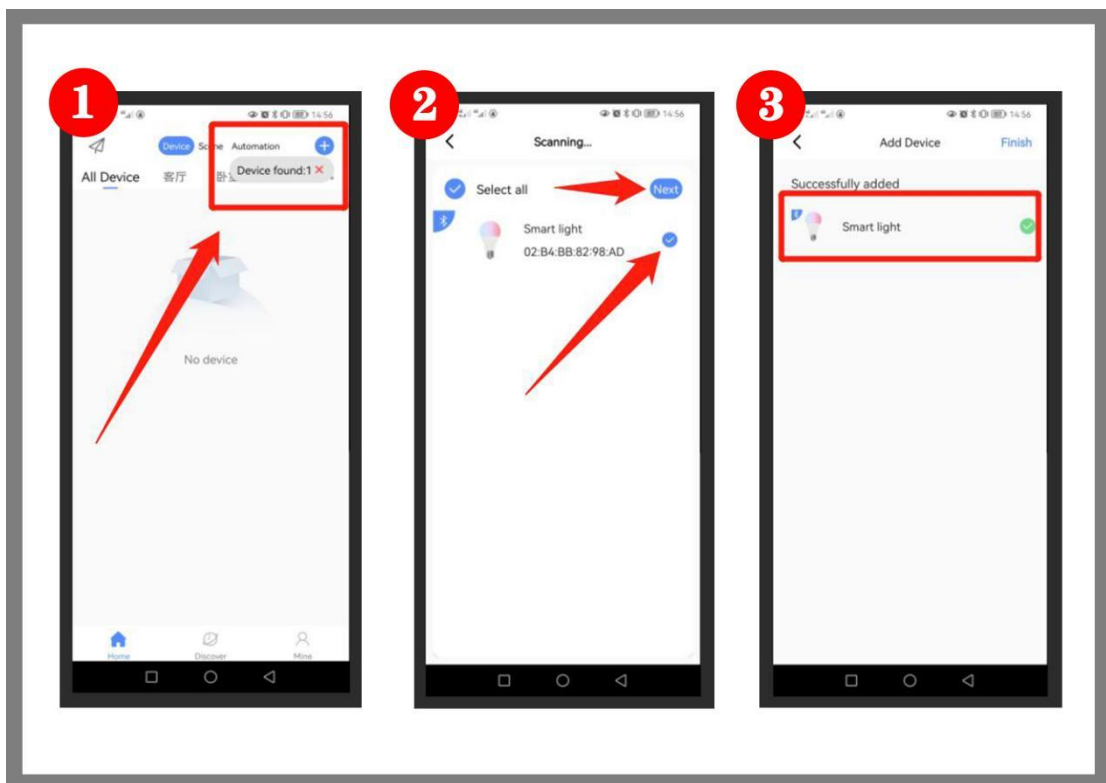
②: Turn on the Bluetooth of the mobile phone.



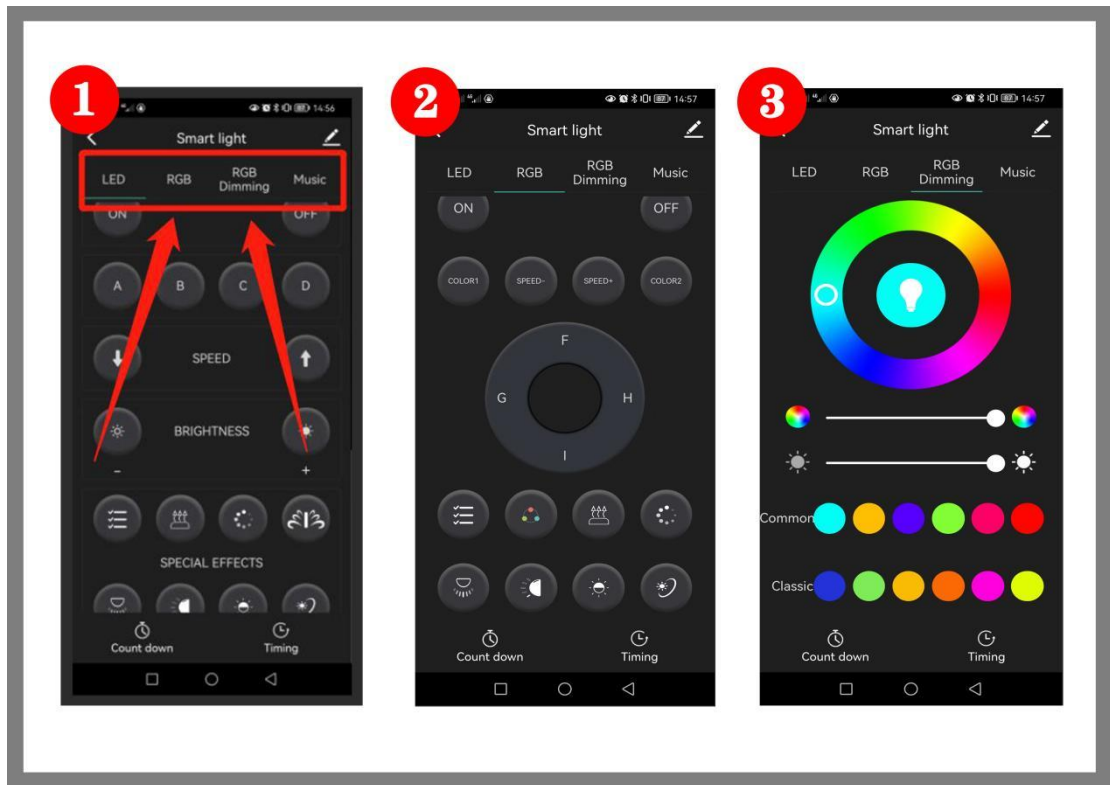
③: Click to enter CozyLife, you can click "Experience Now" to enter the software without logging in.



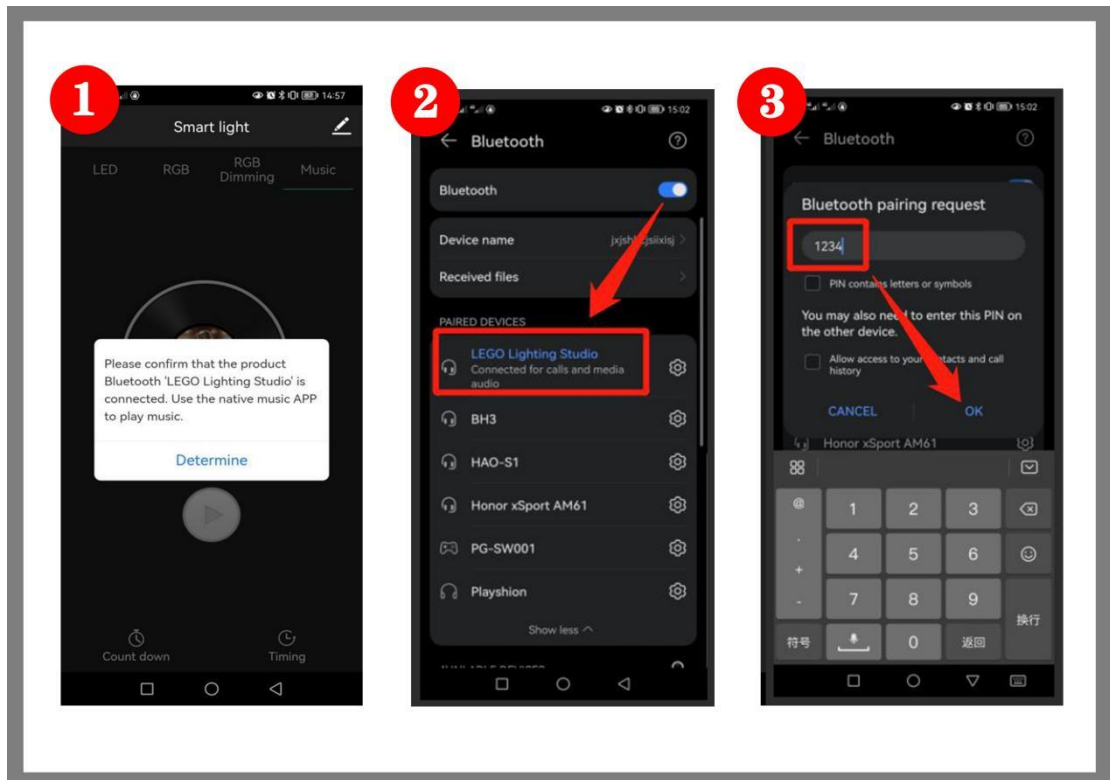
④: The software will detect the device at this time, select our device and click "Next" to connect.



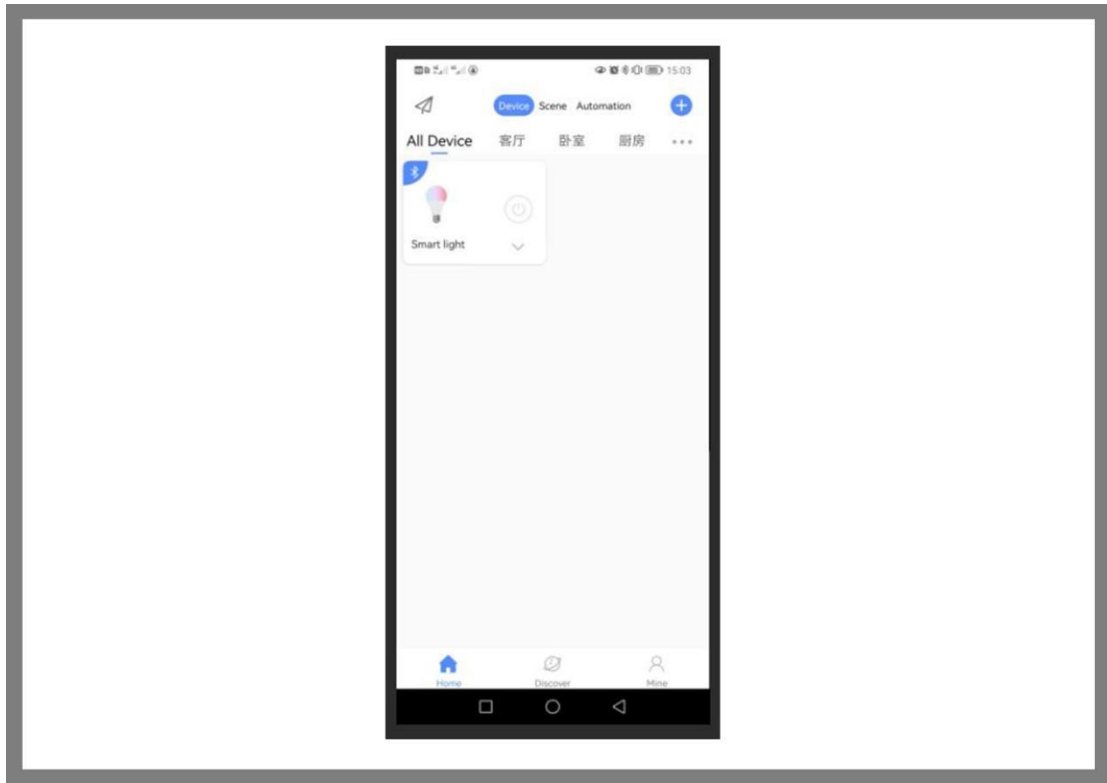
⑤: Enter the operation interface of this product, there are 4 interfaces that can be switched. "LED" is the control interface of ordinary lighting; "RGB" is the operation interface of variable color lighting; "RGB Dimming" is used to adjust the color of RGB lighting.



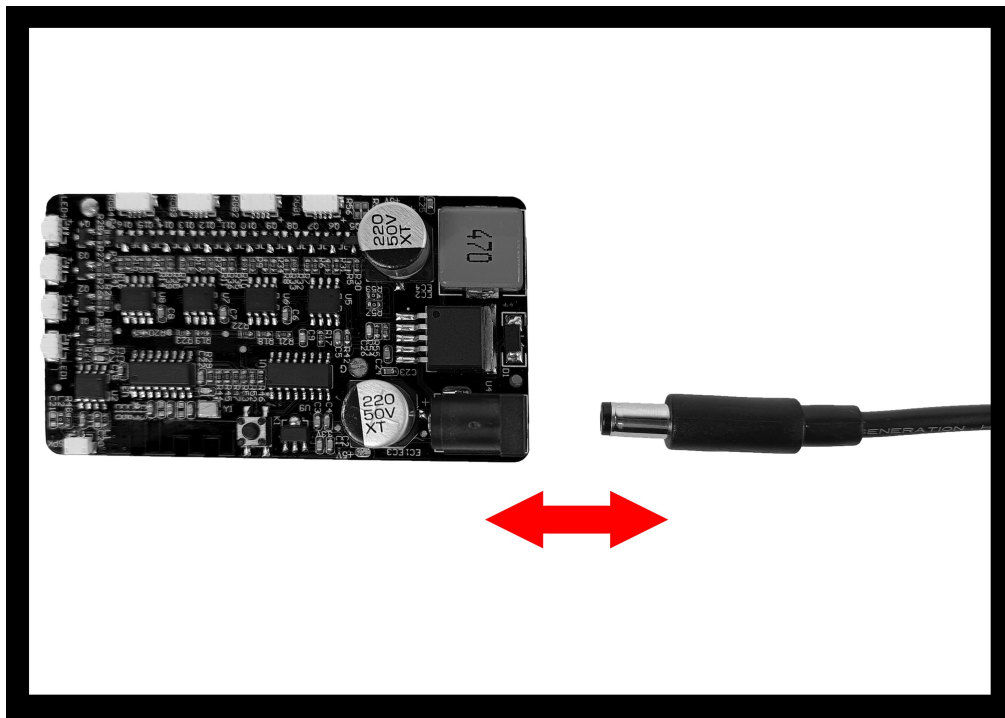
⑥: When using the fourth "Music" interface, the mobile phone needs to be connected to the Bluetooth device of the APP module - "LEGO Lighting Studio", and the device password is "1234". After the connection, the APP module can be used as a speaker to play the sound on the mobile phone.



⑦: After the connection is successful, the device will automatically connect to your mobile phone when you turn on the device next time, and there is no need to manually connect again.



⑧: If you need to change the mobile phone to connect, please re-power on three times (you need to disconnect the connection part in the figure), reset the module to reconnect, and the connection steps are the same as above.



4.Function introduction

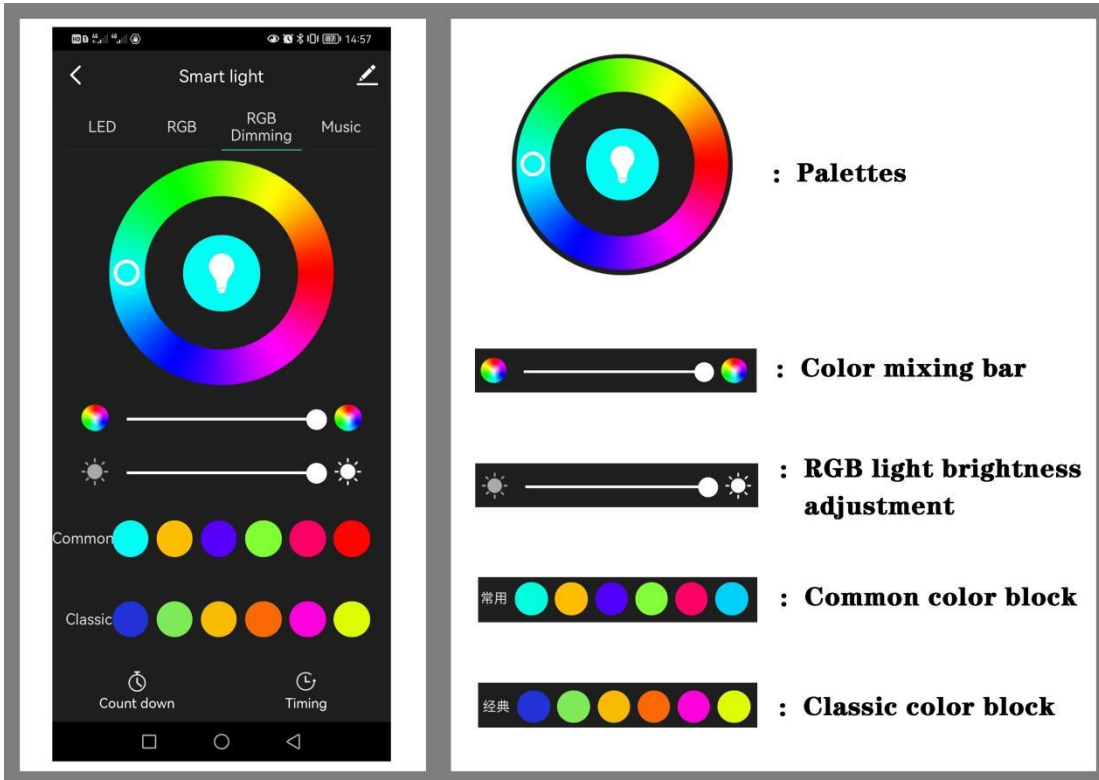
①: LED

- All lights turn on sequentially.
- All lights are off.
- Turn A on/off. Turn B on/off.
- Turn C on/off. Turn D on/off.
- Decrease frequency. Decreases brightness.
- Increase frequency. Increases brightness.
- Continuous selection button: When lit, you can select multiple function buttons below at the same time, and play the light functions in order of selection.
- A, B, C, D are turned on slowly in sequence.
- A, B, C, D flow light effect.
- A and D the light is on and C and B flash alternately.
- A, D, C, B sea wave light effect.
- Quickly open from A to D in turn.
- Breathing light mode.
- A, C and B, D flashing alternately.

②: RGB

- All lights turn on sequentially.
- All lights are off.
- Turn F on/off. Turn G on/off .
- Turn H on/off . Turn I on/off.
- Seven-color fast flash. Seven-color slow flash.
- Decrease frequency. Increase frequency.
- Continuous selection button: When lit, you can select multiple function buttons below at the same time, and play the light functions in order of selection.
- Cyclic color change function: can be used together with other functions below.
- F, G, H, I are turned on slowly in sequence.
- F, G, H, I flow light effect.
- F, G, H, I sea wave light effect.
- Quickly open from F to I in turn.
- Breathing light mode.
- F and I the light is on and G and H flash alternately.

③: RGB Dimming



The image displays a mobile application interface for controlling smart lights, specifically the 'RGB Dimming' section. The interface includes a large color wheel for selecting colors, a brightness slider, and two rows of color blocks labeled 'Common' and 'Classic'. Below the interface, five components are identified with labels:

- Palettes**: A circular color wheel with a lightbulb icon in the center, used for selecting colors.
- Color mixing bar**: A horizontal bar with a white slider and color indicators at both ends, used for adjusting the color mix.
- RGB light brightness adjustment**: A horizontal bar with a white slider and lightbulb icons at both ends, used for adjusting the brightness of the light.
- Common color block**: A horizontal row of six colored circles (cyan, yellow, purple, green, pink, red) labeled '常用' (Common).
- Classic color block**: A horizontal row of six colored circles (blue, green, yellow, orange, pink, yellow) labeled '经典' (Classic).